

NEW INDUSTRIAL CONSTRUCTION - ±179,600 SQUARE FEET

# 880 INDUSTRIAL CENTER

1605 INDUSTRIAL AVENUE  
SAN JOSE, CALIFORNIA



**CBRE** LBA Logistics 

[WWW.CBRE.US/SANJOSE](http://WWW.CBRE.US/SANJOSE)



# INTERSTATE 880 FRONTAGE

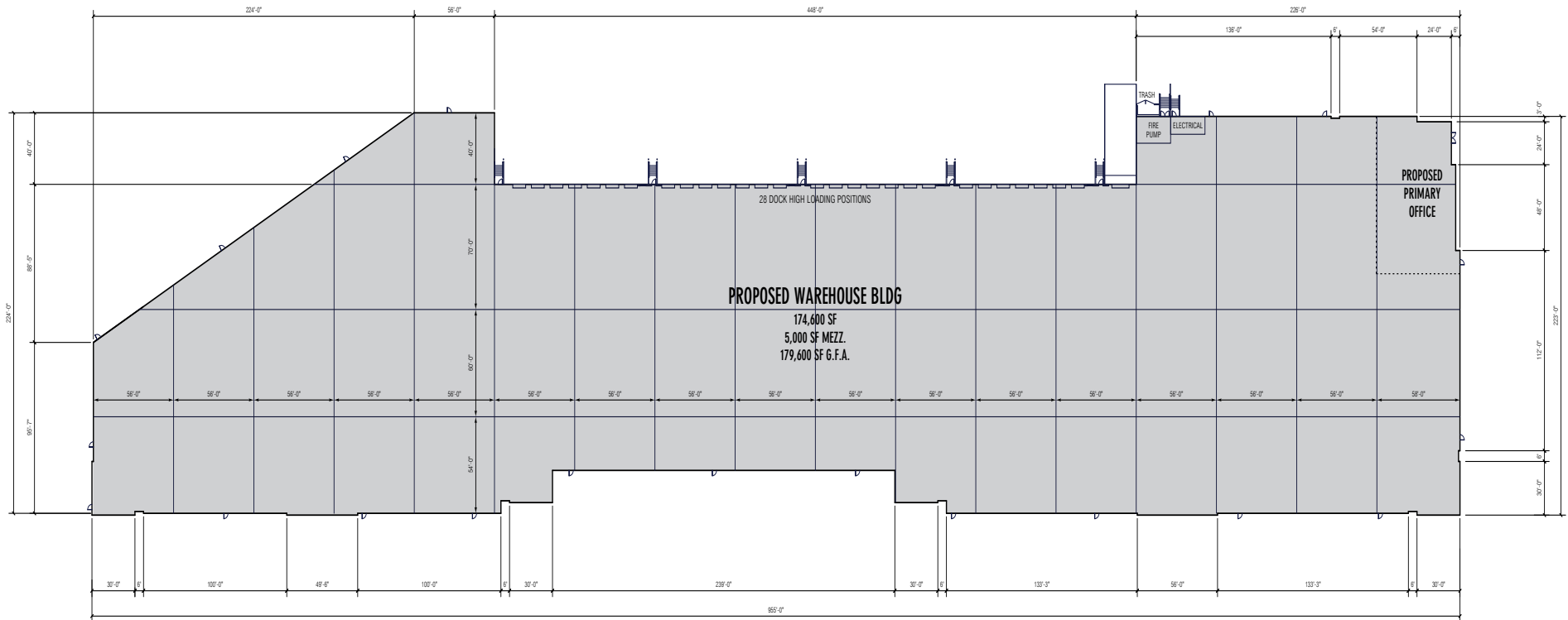
**880** INDUSTRIAL  
CENTER





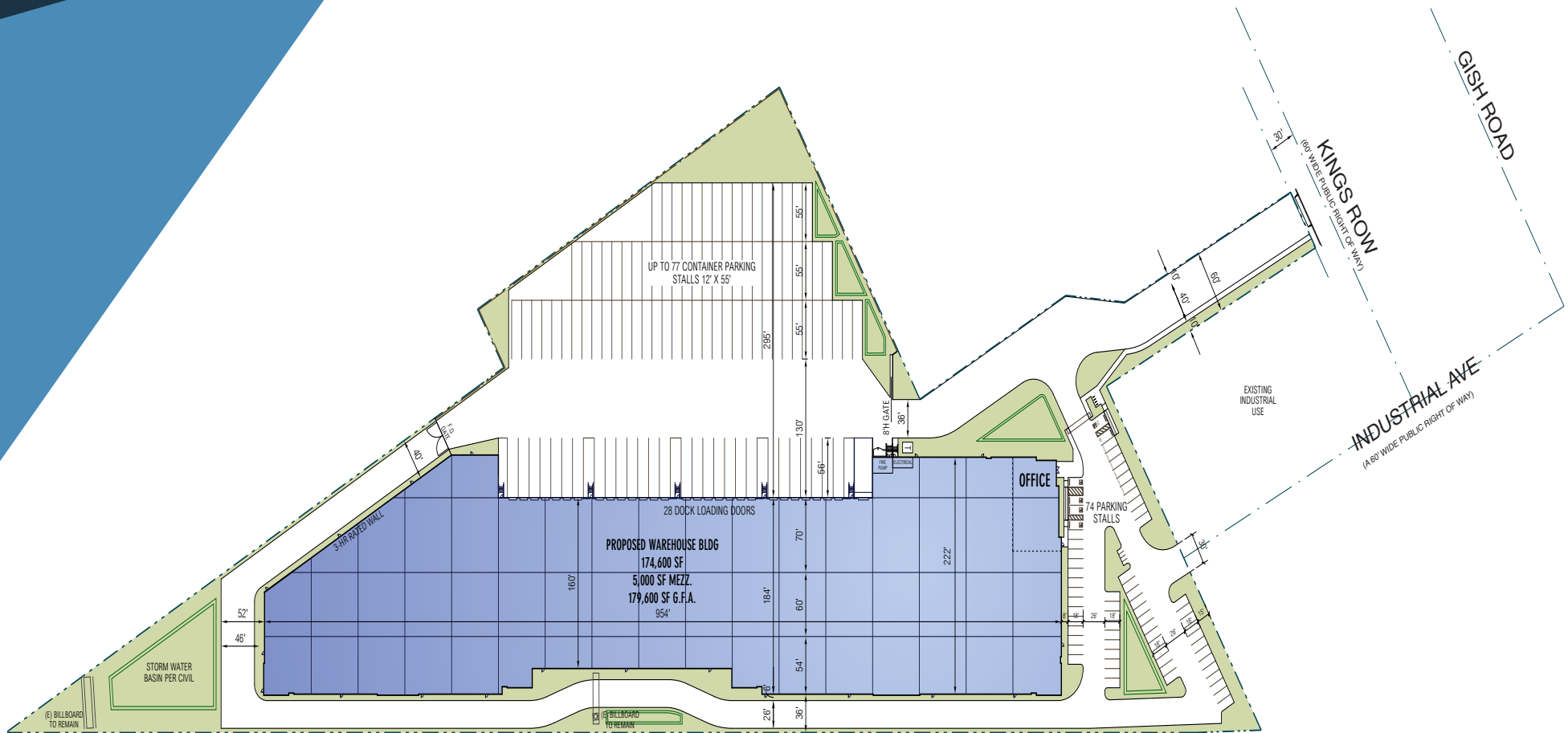
# FLOOR PLAN: BUILDING SPECS

**880** INDUSTRIAL  
CENTER



- + Available Q2 2021
- + ±179,600 Square Feet State of the Art Industrial Building
- + 1,200 Amp Service with 4,000 Amp Pull Section (upon verification)
- + Skylights Throughout
- + 50' X 60' Column Spacing
- + 1 Grade Level Door
- + 28 Dock High Doors
- + ESFR Sprinkler System
- + 7" Slab @ 4,000 PSI
- + 36' Clear Height
- + Sustainable Design
- + Up to 77 Container/ Trailer Stalls or Large Oversize Material Storage Yard
- + Heavy Industrial Zoning

**880 INDUSTRIAL CENTER**



# STRATEGIC LOCATION

## 880 INDUSTRIAL CENTER



- + Immediate Access to both Interstate 880 and Highway 101
- + 167,000 Vehicle Traffic Views Per Day

- + 1,400 Linear Feet on Interstate 880
- + 1.5 Miles West of New "Silicon Valley" Bart Station

- + Transformational North San Jose Submarket
- + Immediate Area Provides Access to a Sustainable, Diverse and Qualified Workforce



# 880 INDUSTRIAL CENTER

1605 INDUSTRIAL AVENUE  
SAN JOSE, CALIFORNIA



## CONTACT

**CBRE** LBA Logistics 

**BRIAN MATTEONI**  
Senior Vice President  
Lic. 00409987  
+1 408 453 7407  
[brian.matteoni@cbre.com](mailto:brian.matteoni@cbre.com)

**NICK WHITSTONE**  
Senior Vice President  
Lic. 01196787  
+1 408 453 7438  
[nick.whitstone@cbre.com](mailto:nick.whitstone@cbre.com)

© 2019 CBRE, Inc. All rights reserved. This information has been obtained from sources believed reliable, but has not been verified for accuracy or completeness. You should conduct a careful, independent investigation of the property and verify all information. Any reliance on this information is solely at your own risk. CBRE and the CBRE logo are service marks of CBRE, Inc. All other marks displayed on this document are the property of their respective owners, and the use of such logos does not imply any affiliation with or endorsement of CBRE. Photos herein are the property of their respective owners. Use of these images without the express written consent of the owner is prohibited. PMStudio\_September2020