

规格如有变更，恕不另行通知。  
实物可能与说明书上的图片有所不同。  
Specifications are subject to change without notice.  
Photos and illustrations may vary from actual product.

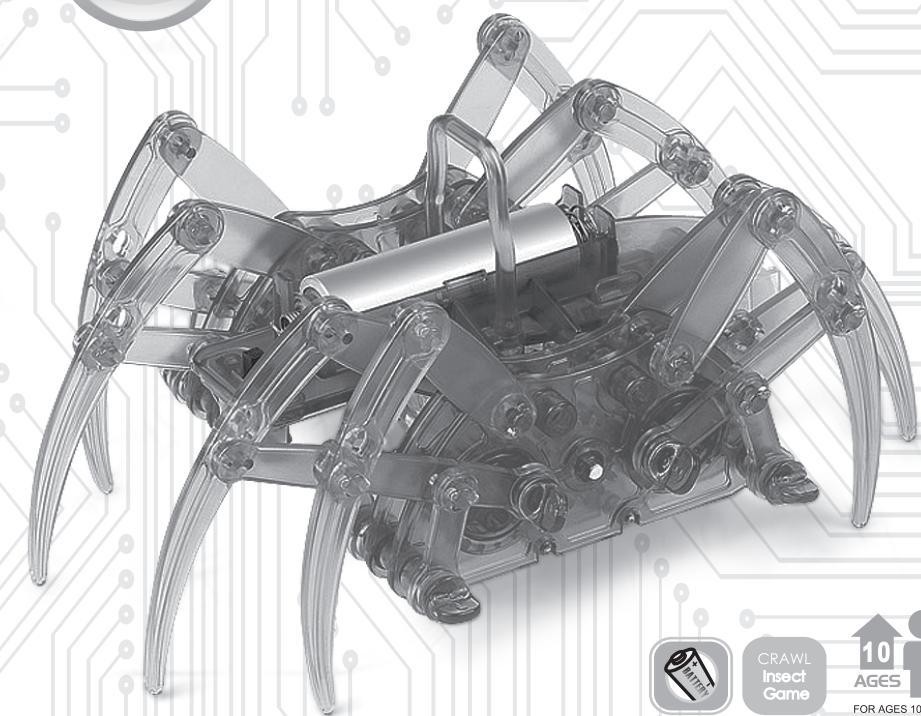


# spider robot

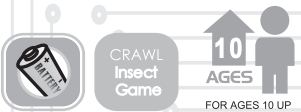
## 蜘蛛机器人



### 组装使用说明书 Assembly & Instruction



Build your own wind kit



#### 产品介绍 Product Introduction:

这是一款高仿真的DIY蜘蛛机器人，八条相交的腿能精确地再现蜘蛛的爬行动作，两种组装方法可以让你组装出不同步伐和步态的蜘蛛机器人。孩子在组装的过程中可以体会到不断征服所带来的喜悦感和成就感，有助于孩子创新思维能力的培养和智力的开发。

Spider Robot This is a kind of vivid DIY spider robot with eight multi-jointed legs accurately duplicate the walking movement of real spiders.

There are two assembly choices for you to change the stride length and gait of the spider. Children can experience the joyance and achievement with the assembly, which can help to cultivate their innovation and intelligence

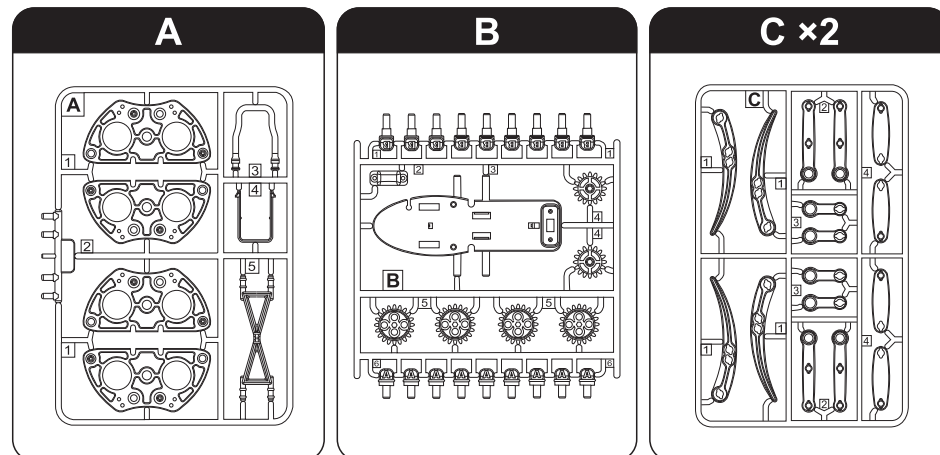
#### 机械零件清单和需要的工具 Mechanical Parts List & Tool You May Need:

P1	齿轮箱 Gear box	P2	开关 Switch	P3	接线端 Terminal	P4	接线端 Terminal
	数量 Qty		数量 Qty		数量 Qty		数量 Qty
	1		1		1		1

P5	橡胶管 Rubber tube	剪钳 Diagonal Cutter	剪刀 Scissors
	数量 Qty		
	1		

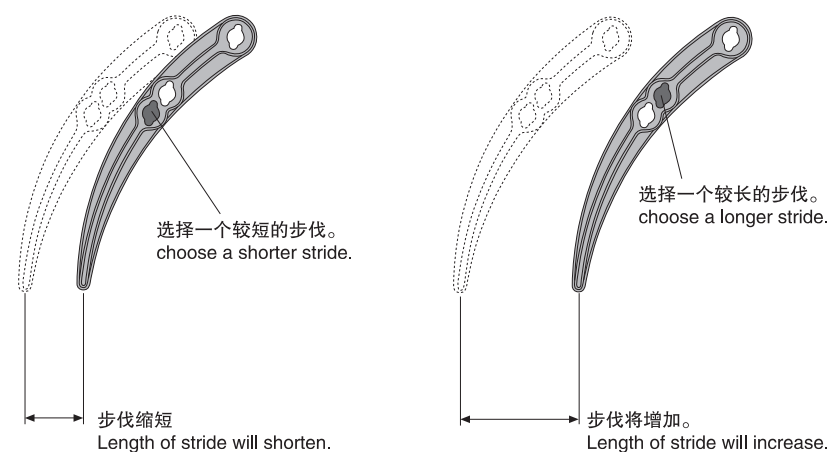
#### 塑料零件 Plastic Parts:

※请按装配顺序逐渐剪下相应编号零件。Cut up the plastic parts in succession as shown.

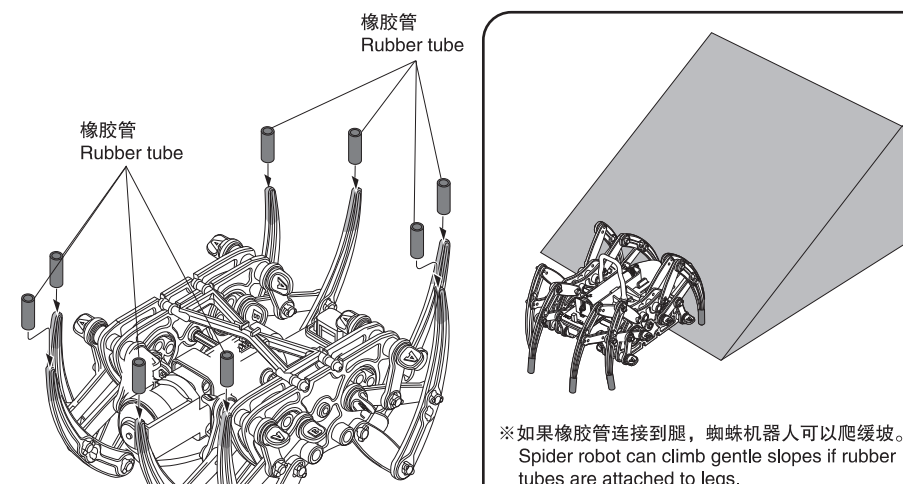


#### 如下所示的蜘蛛机器人更改的步伐

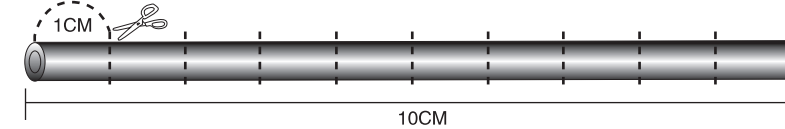
Change the stride length for the spider robot as shown



#### 插入橡胶管 Insert the rubber tube

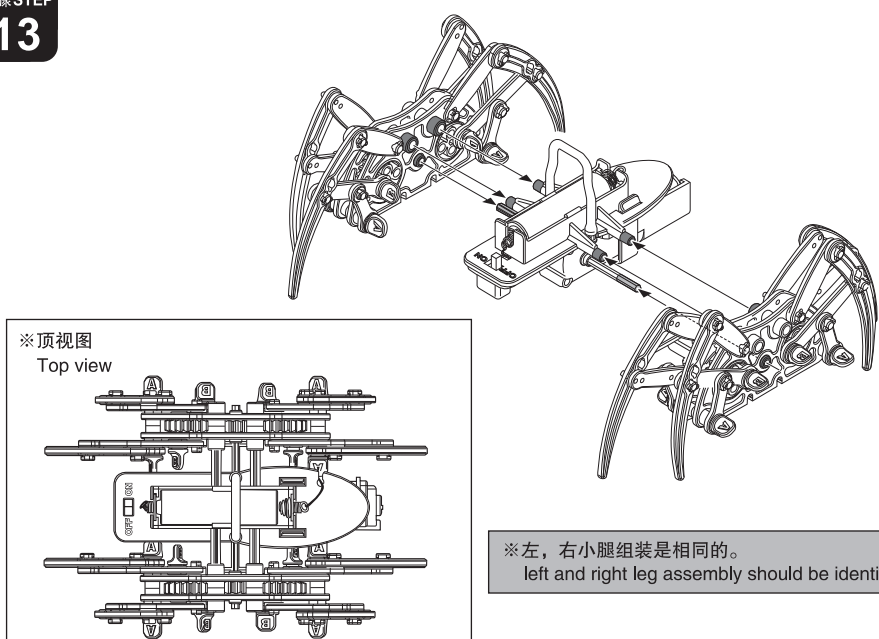


※切8个相同长度的橡胶管（如图所示），并连接到腿。  
Cut the rubber tube in 8 equal lengths (as shown) and attach to legs.

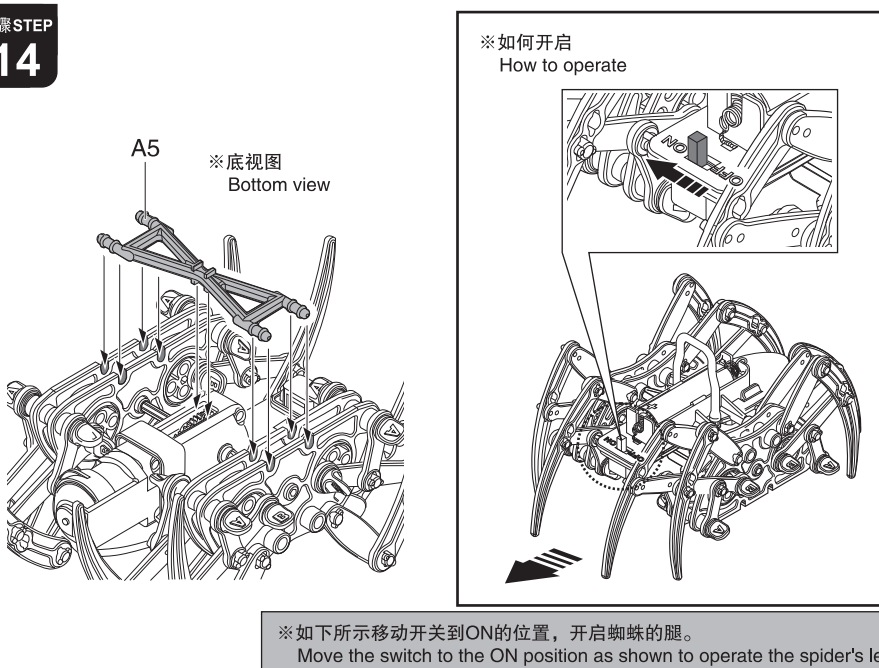


中国制造 MADE IN CHINA

#### 步骤STEP 13

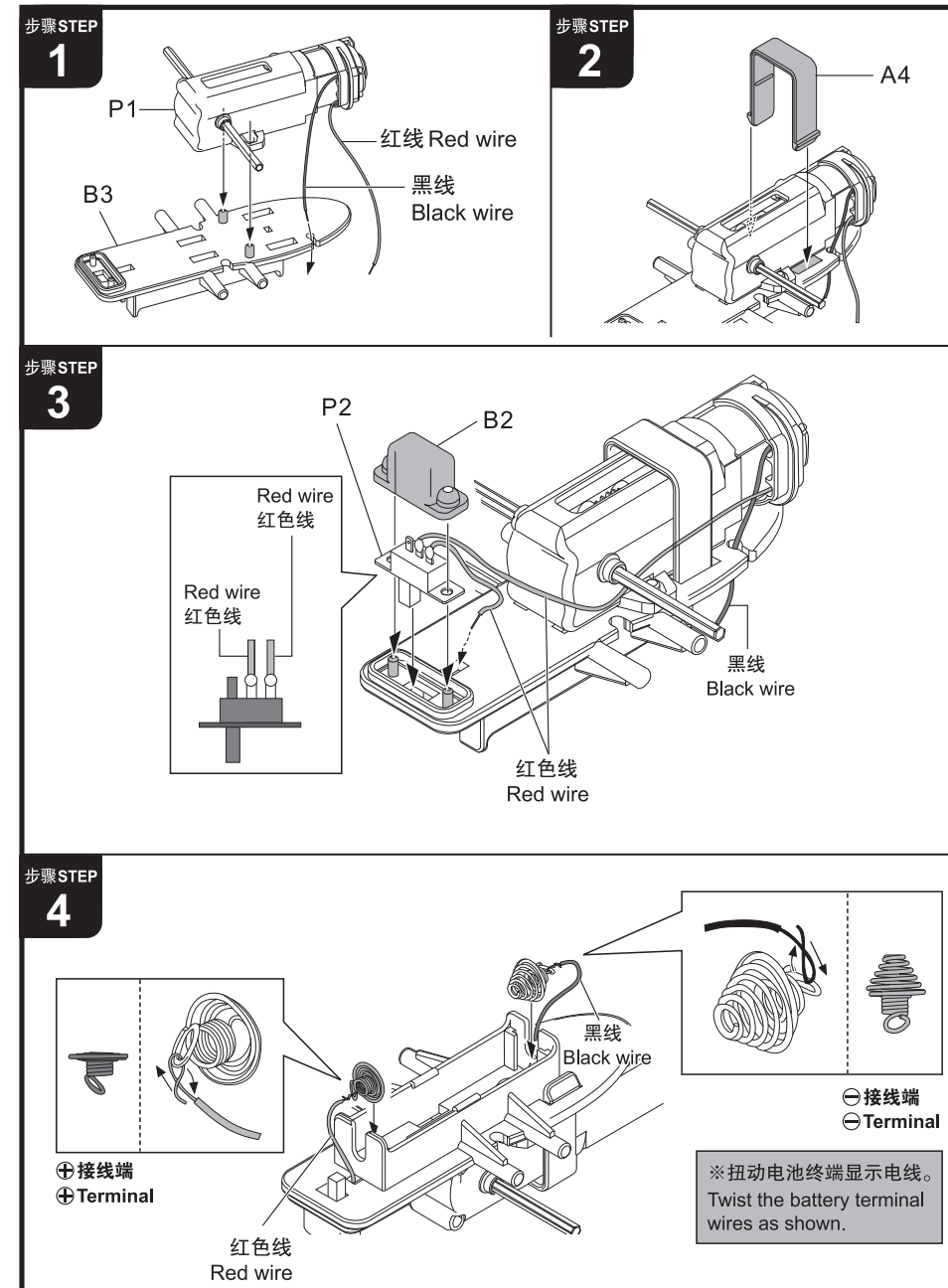


#### 步骤STEP 14



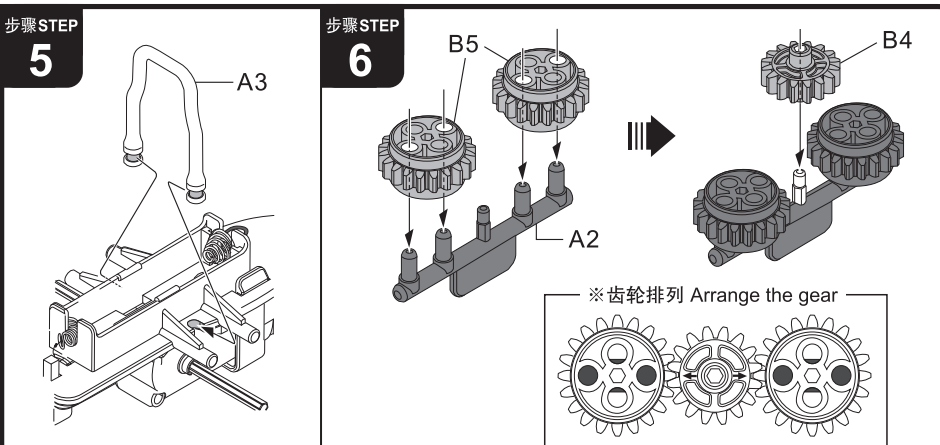
— 5 —

#### 机械装配 Mechanical Assembly:

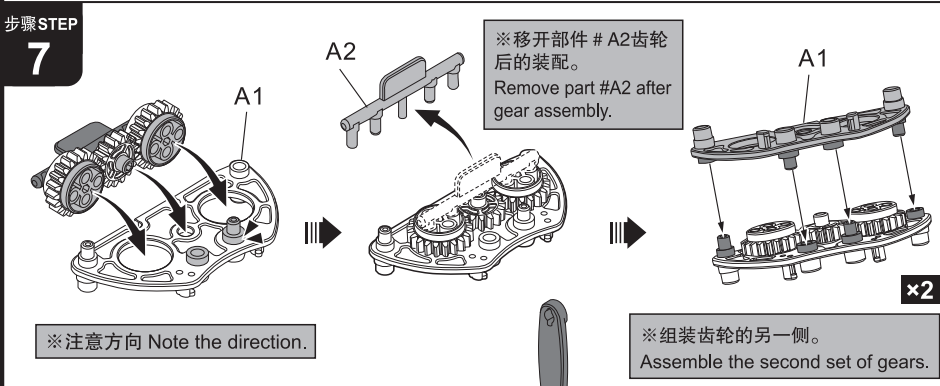


— 2 —

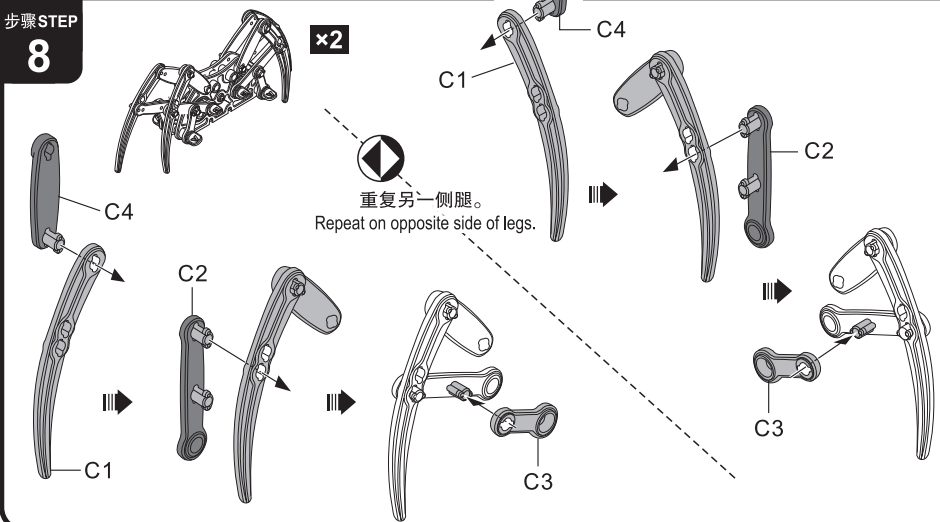
#### 步骤STEP 5



#### 步骤STEP 7

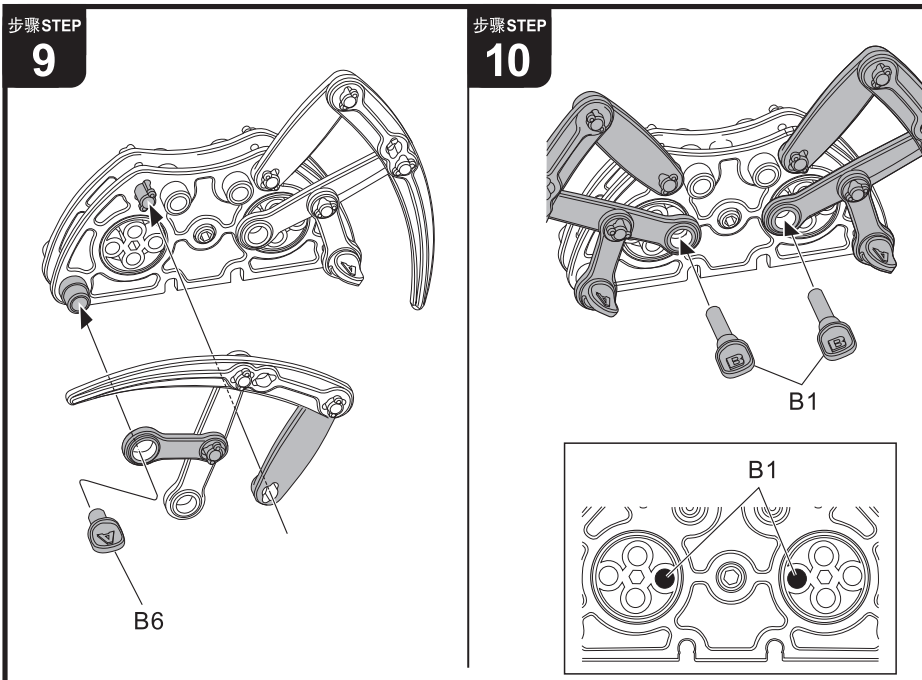


#### 步骤STEP 8

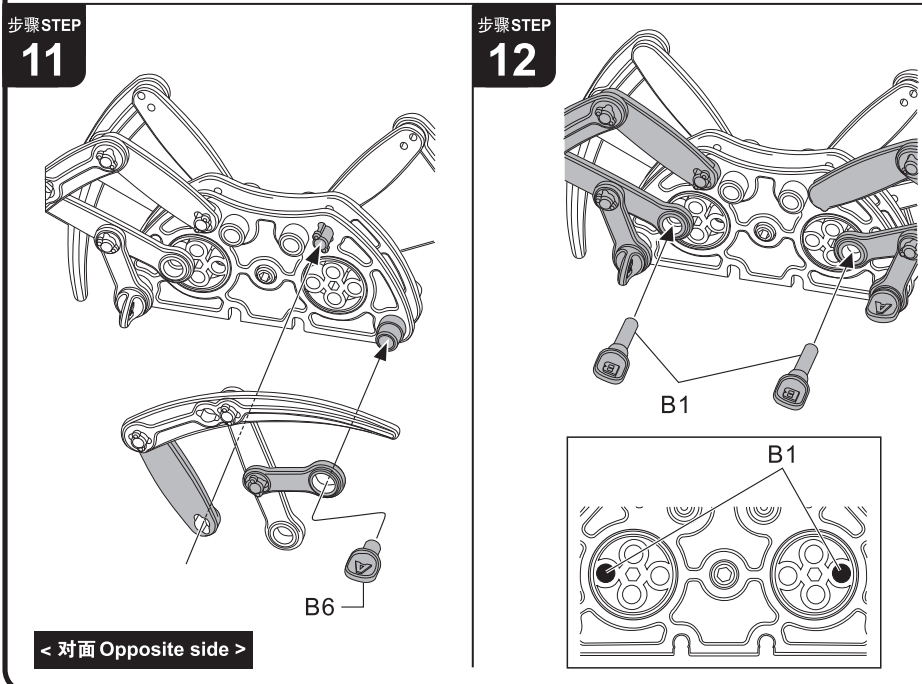


— 3 —

#### 步骤STEP 9



#### 步骤STEP 11



— 4 —