

STOP THE ATTACK.

TERMITE DAMAGE HAS COST
U.S. HOMEOWNERS



\$50 BILLION
PER DECADE.

TERMITE
DAMAGE
IS RARELY COVERED BY
HOMEOWNERS
INSURANCE.

Termites can enter your home through cracks in concrete and openings as small as 1/16 inch. Each attack can leave you paying hundreds to thousands of dollars to repair the destruction they leave behind. Termite damage is rarely covered by homeowners insurance because policies provide coverage for sudden and accidental property damage. Homeowners insurance is not intended to cover termite damage since it is considered preventable through proper home maintenance – meaning if you can prevent it, you should have. And with the Sentricon® System, you can!

60+ SCIENTIFIC STUDIES PROVE IT WORKS



THE SENTRICON® SYSTEM HOW IT WORKS.

The Sentricon® System is like no other termite control. It uses termites' very nature — their constant foraging in search of food — against them. Worker termites find the bait in the Sentricon stations while foraging, and share it with the queen and other colony members. Sentricon stops the process of molting which ultimately affects the queen and reproduction and kills the workers. The colony then crumbles and is eliminated.



“I've always heard the saying, 'The house you live in either has termites or it's going to have termites.'
I WOULD RECOMMEND SENTRICON so that if you have that house that doesn't have termites, it will stay that way.”

— SCOTT B.
Homeowner, Perry, FL

ARM YOURSELF WITH MORE INFORMATION BY VISITING SENTRICON.COM.



®/™Trademark of The Dow Chemical Company ("Dow") or an affiliated company of Dow
Always read and follow label directions.
U01-028-361 (11/16) 010-71755

IT'S YOUR HOME. PROTECT IT FROM AN AROUND-THE-CLOCK EATING MACHINE.

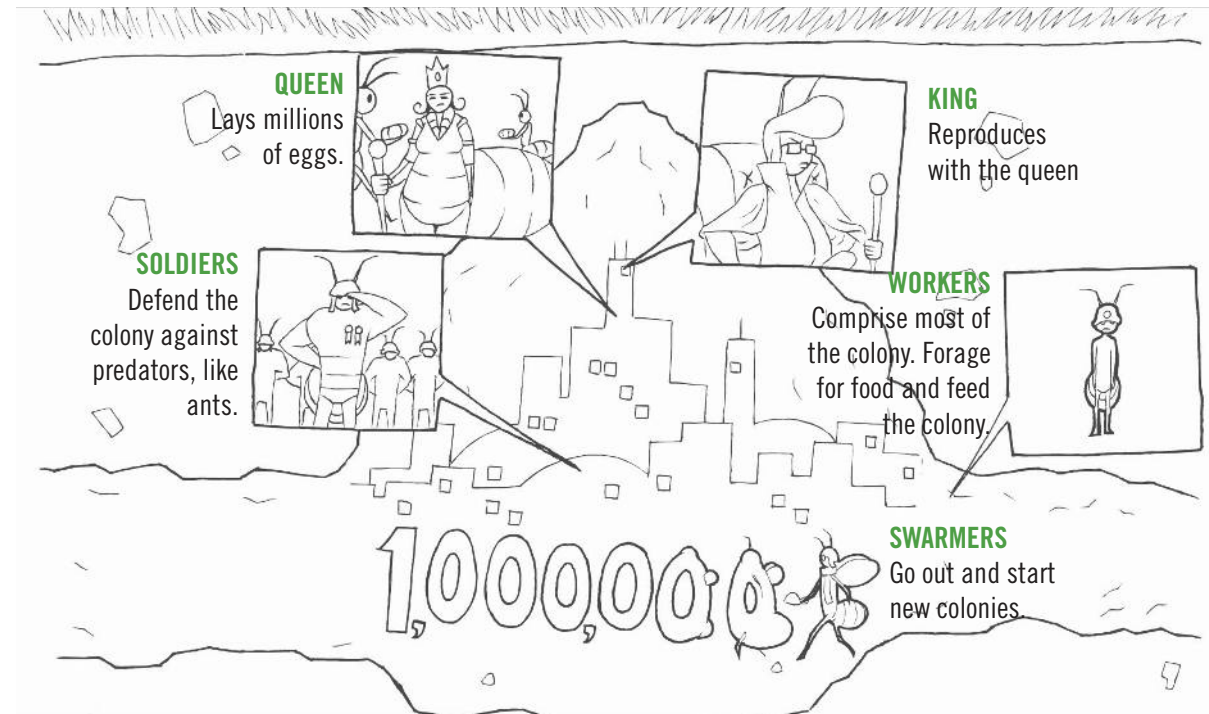
Eat. It's what termites do. They tunnel from colonies hidden underground through the soil to find sources of food — including your home. The Sentricon® System uses this constant foraging, their very nature, against them. They prefer Recruit® HD, the bait used in Sentricon, nearly 10x more than wood, so they eat it instead of your house. And when they eat it, they can't molt. And when they can't molt, they die.

Eliminate the Colony. Eliminate the Queen. Protect Your Largest Investment.



GET THE FACTS.

KNOW YOUR CASTE OF CHARACTERS.

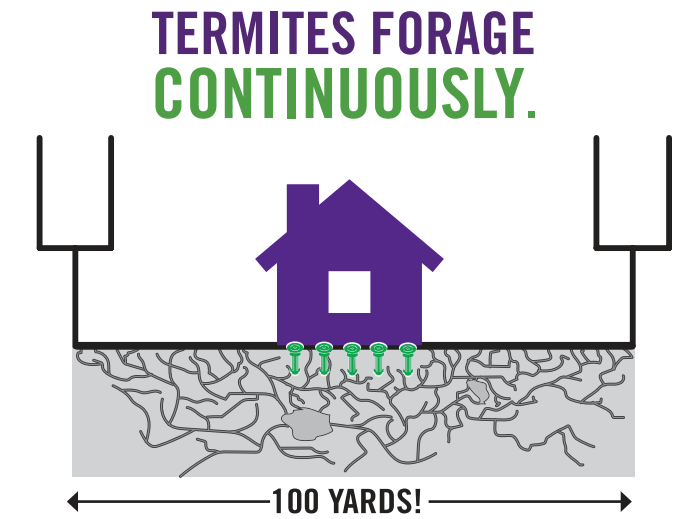


Termites have thrived since the days of the dinosaurs.

Over thousands of years, termite caste roles have evolved in a highly efficient and effective way. This has allowed termites to work together as a colony to thrive and survive. It's no wonder why they've been around for longer than 250 million years!

MORE ABOUT THE ENEMY.

- Thousands — sometimes millions — of subterranean termites live in an underground colony
- Worker termites forage continuously in search of food to feed the other colony members, including the queen
- Termites build tubes of mud to connect their soil foraging tunnels with food sources — like your home
- Just as a tree expands its branches to gather sunlight and nutrients, a termite colony expands its underground network of tunnels in search of food
- Multiple termite colonies can live near your home, all in search of food



THEY CAN TRAVEL THE LENGTH OF A FOOTBALL FIELD IN SEARCH OF FOOD.

TERMITES INVADE 5 MILLION HOMES YEARLY!



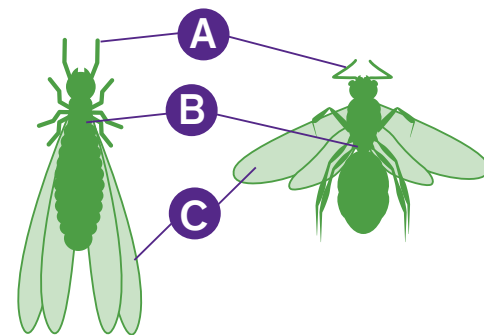
WHAT ARE THESE FLYING BUGS?

IS IT A TERMITE OR AN ANT?

You will rarely see termites. But you might see hundreds or thousands of them flying during a reproductive swarm. Here's how to distinguish them from their non-destructive look-alike: swarming ants

- A. Antennae:** Ants' are elbowed. Termites' are straight
- B. Waists:** Ants' are narrow and pinched. Termites' are thicker and less defined
- C. Wings:** Ants' front pair are longer than the back and don't break off easily. Termites' are equal in length and break off easily

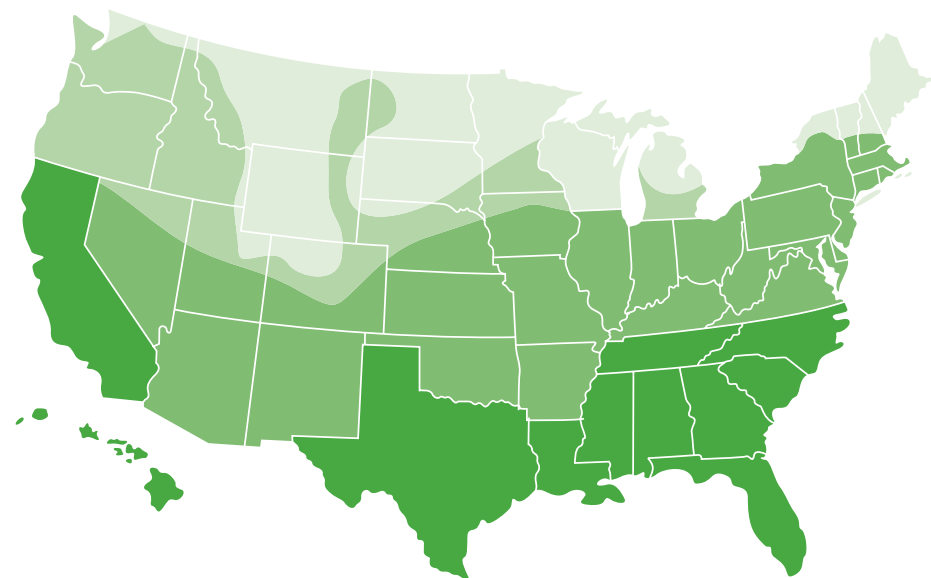
TERMITE VS ANT.



TERMITE SWARMERS.

Seeing flying termites, swarmers, is just one indication that your home may be under attack by termites. But they aren't the only sign. Just because you don't see swarmers doesn't mean there isn't a hidden issue. Your Certified Sentricon Specialist™ can conduct an inspection to determine if there is a termite infestation threatening your largest investment — your home.

TERMITES LIVE WHERE YOU DO



● SLIGHT ● MODERATE ● HEAVY ● VERY HEAVY