

DO YOU KNOW WHERE TO GO FOR QUIET STUDY?

The Princeton Theological Seminary Library has silent, collaborative, active and social “zones.” Use the chart to find your zone.

LOOKING FOR QUIET? SILENT ZONES

No conversation or discussion;
No cell phone use

WORKING WITH A GROUP? COLLABORATIVE ZONES

Keep noise to a minimum;
No cell phone use
*May serve as a social setting
at pre-arranged times

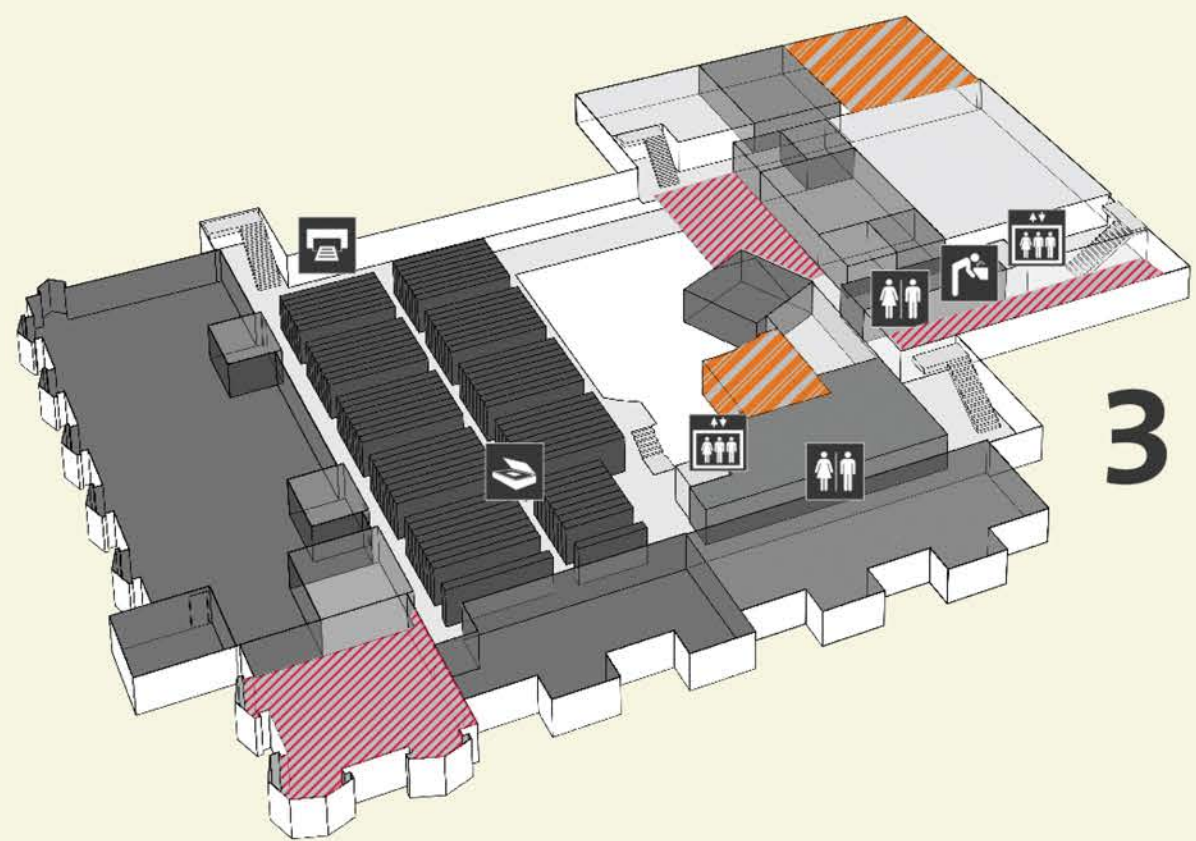
NEED SOME HELP? ACTIVE ZONES

Library transactions at service and
reference desks; Abbreviated, quiet
discussions and conversations;
No cell phone use
*May serve as a social setting
at pre-arranged times

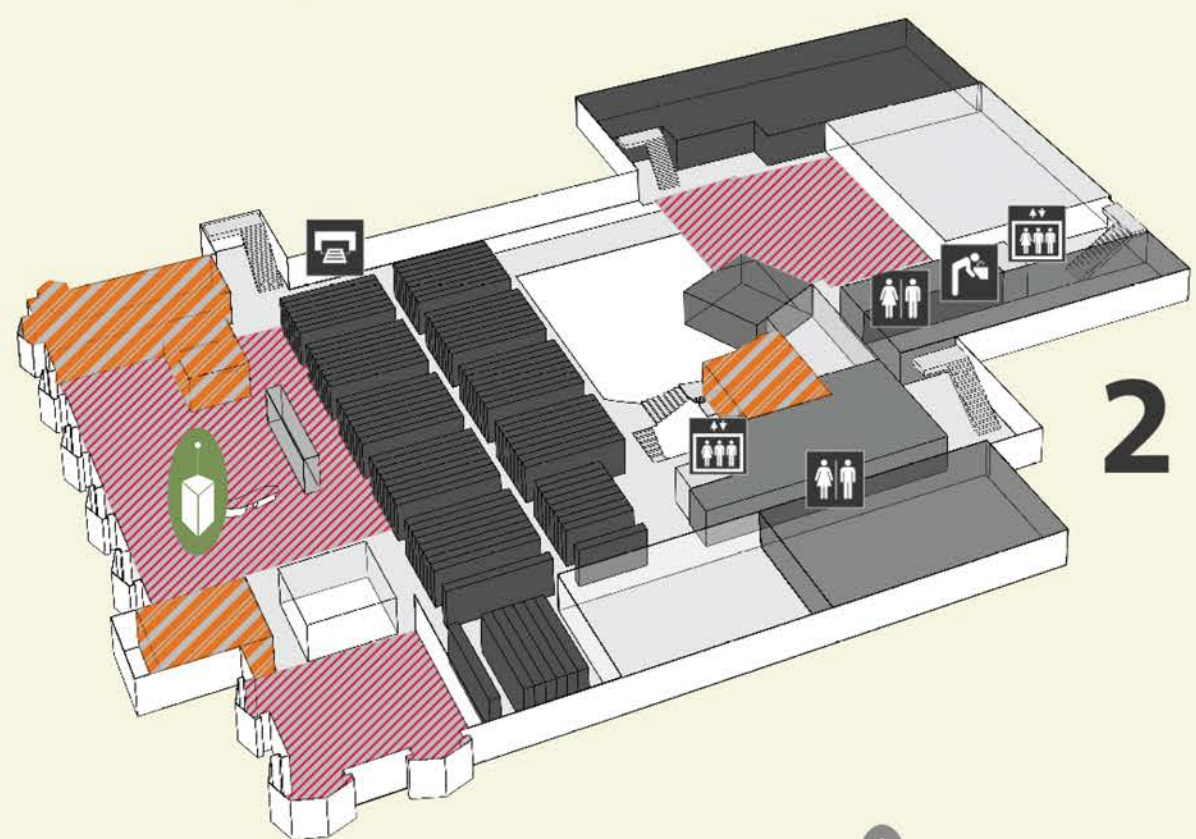
LOOKING FOR A MEETING? SOCIAL ZONES

Group meetings; Individual conversations

Talking on cell phone permitted in
Brick Café 1020 and Stairwells 2, 3



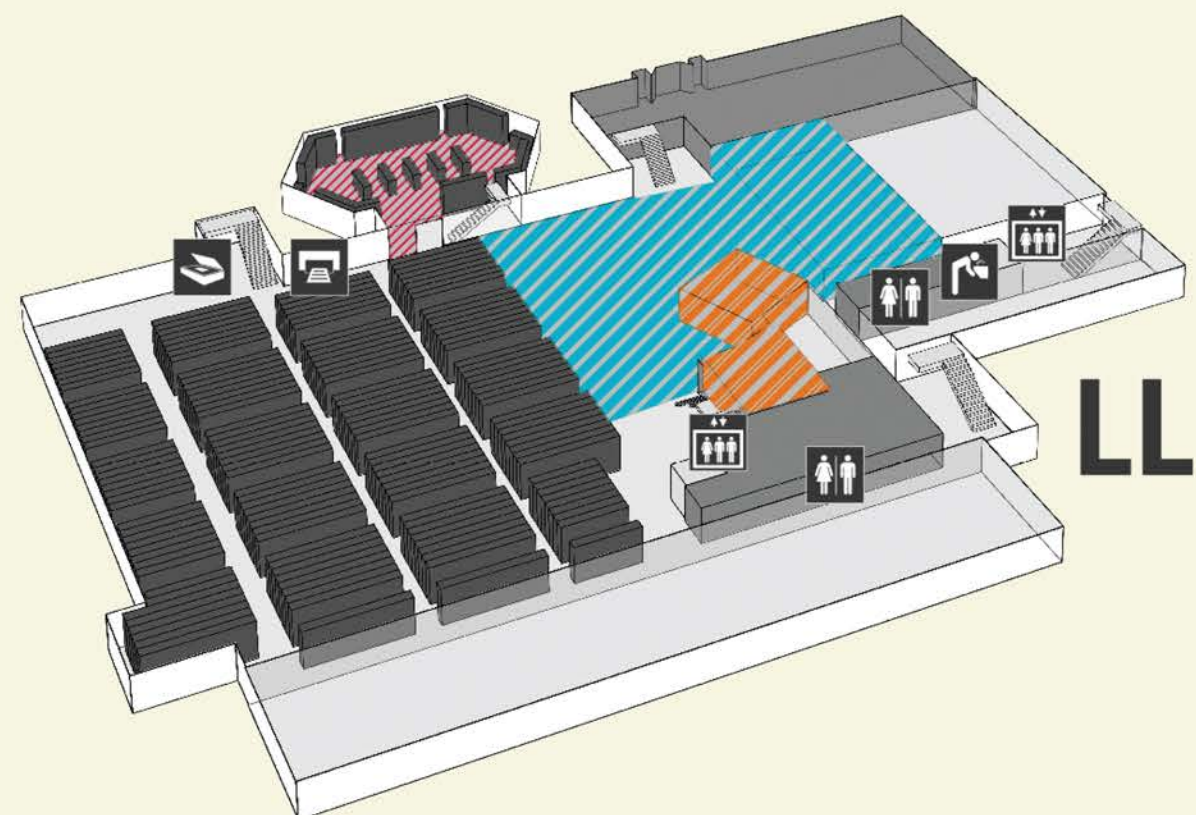
3



2



1



LL



Reference Desk



Service Desk

Entrance ▶