

Smittybilt SRC Side Armor

2007-2014 JK 4 Door

Item # J17709, Smittybilt 76634

Installation Time: 2 Hours

Tools Required:

- ✓ Ratchet
- ✓ 6" Ratchet Extension Bar
- ✓ 5/8 Socket (16mm)
- ✓ Patience



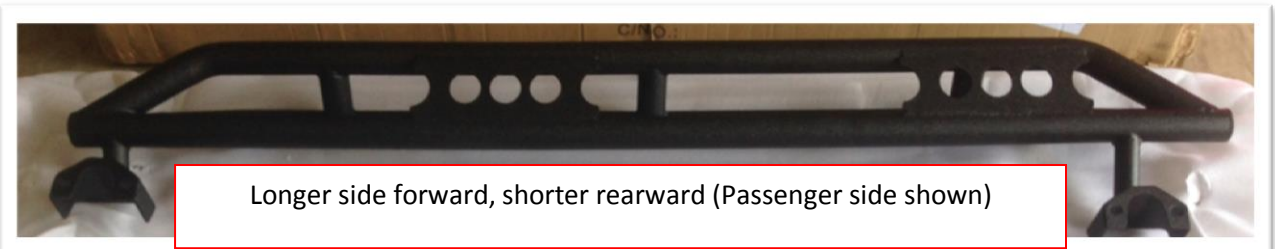
Inside the Box:

- ✓ Driver Side Bar
- ✓ Passenger Side Bar
- ✓ Instructions Packet (A copy of instructions, 3 stickers, and a flyer)

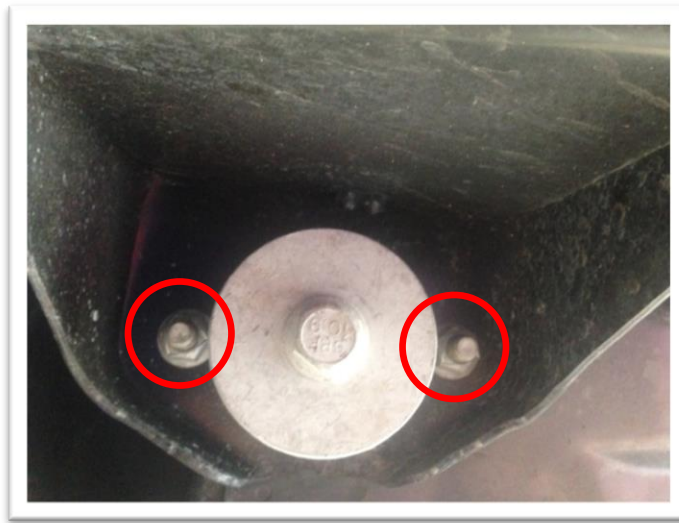
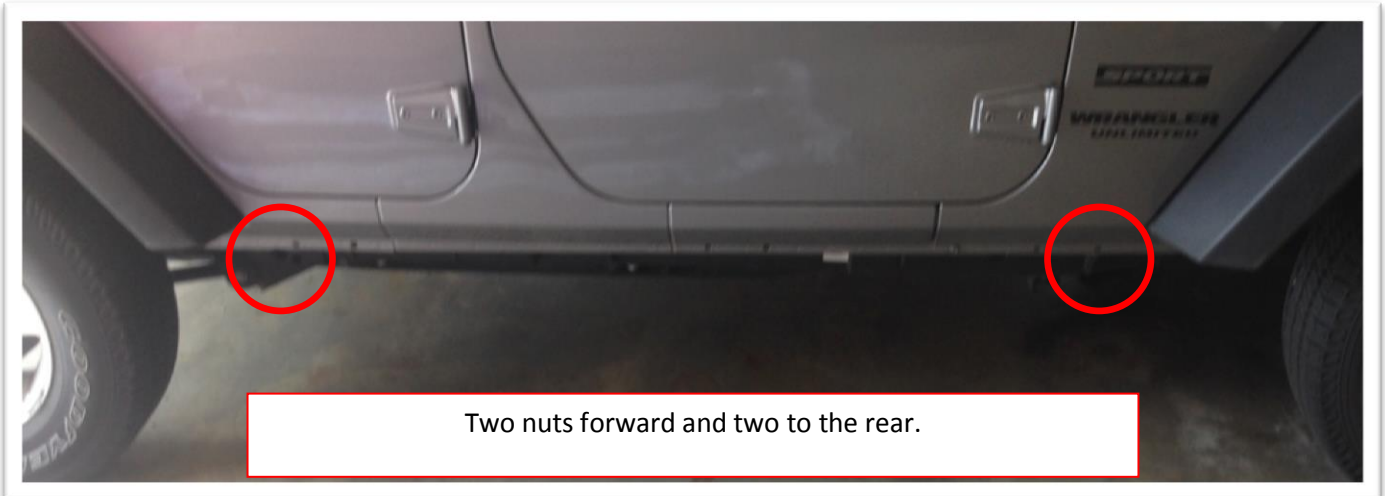


Installation Instructions:

1. Organize Driver and Passenger side.



2. Identify front and rear body mounts, and remove the four nuts on each side of the vehicle.



3. The "U" Shaped bracket fits into the body mounts with the two bolts going through the slots on the bracket. You will want to have each side leveled to the proper height and someone else to assist with holding each side as you fasten it.



4. Install the nuts that were removed earlier but do not tighten until all of them have been replaced. Once complete, retighten and follow the same steps on the opposite side.



5. Installation complete!

