



## Barricade Extreme HD Front Bumper w/ Winch Mount (15-17 F150)

### Contents:

- |                                      |                              |  |
|--------------------------------------|------------------------------|--|
| (1) - Bumper                         | (8) - M12 Lock washers       | ** Optional (2) - LED Fog Lights       |
| (1) - Winch Plate                    | (8) - M12 Nuts               | ** Optional (1) - Light Wiring Harness |
| (1) - License Plate Mount & Hardware | (4) - Plastic Holder Washers | ** Optional (2) - Fog Light Hardware   |
| (4) - M12 x 1.75 x 40mm Bolts        | (2) - D-Rings                |  |
| (2) - M12x1.75 Double Bolt Plates    | (10) - Zip Ties              |  |
| (12) - M12 Flat Washers              |                              |  |

### TOOLS REQUIRED:

Basic Hand Tools  
21mm Socket



**STEP 1** // Using a panel removal tool, remove the plastic bumper insert. It is held in with several metal push clips.



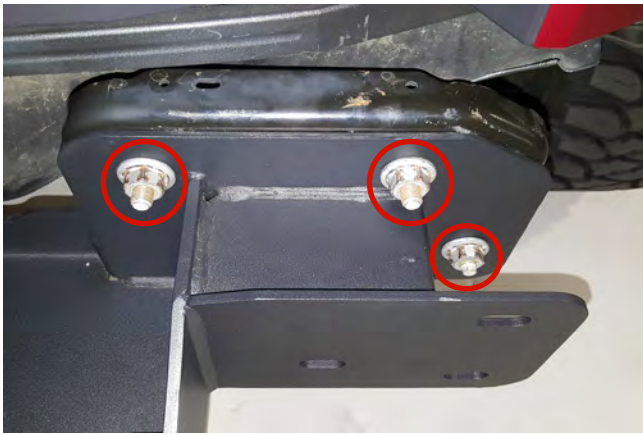
**STEP 3** // Unplug the factory fog light connectors and unclip the wiring harness from the bumper. Remove the lower (2) 21mm nuts. Then remove the front bumper from the vehicle.  
\*\*Note: Factory hardware will be reused.



**STEP 2** // Next, loosen the upper (4) 21mm nuts holding the front bumper to the support beam of the vehicle. \*\*Note: Factory hardware will be reused.



**STEP 4** // Attach the front license plate bracket to the new Barricade bumper if a front license plate is required using the (2) M6 screws, flat washers, and lock nuts.



**STEP 5** // Install the winch plate to the frame of the vehicle using the factory hardware.



**STEP 8** // Install the (2) d-rings through the winch plate hooks.



**STEP 6** // Attach the winch control box to the control plate mount using the (4) screws off the bottom of the control box.



**STEP 9** // Optional LED light wiring, install the (2) LED lights into the middle slot of the bumper light housings using the supplied hardware.



**STEP 7** // Slide bumper into place, and secure using the factory hardware.



**STEP 10** // Optional LED light wiring, connect the (2) LED lights into the supplied harness. Be sure to zip tie the access wiring away from any damage that could occur.



**STEP 11** // Optional LED light wiring, Install the Red 12+ volt wire to the positive battery terminal. Connect the black ground wire to the negative battery terminal. Mount the fuse in a safe location away from any damage that could occur. Tuck away any extra wiring.



**STEP 12** // Optional LED light wiring, Route the on/off switch to the interior of the vehicle using a suitable body grommet. Mount the switch in the desired location. Zip tie any extra loose wiring away from heat and/or moving engine components.