

## Identification Data

September 26, 2016

LAB GROWN DIAMOND   
Certificate Number 262560209

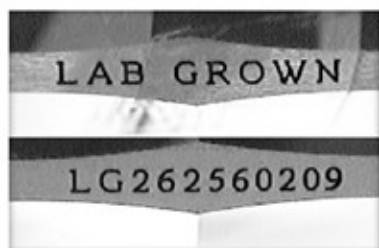
**Gemprint**

Gemprint is the unique optical fingerprint for positive identification of your lab grown diamond. Register your lab grown diamond at [www.Gemprint.com](http://www.Gemprint.com) and receive insurance discounts up to 10%.



## Laser Inscription:

Actual image of the inscription photographed at magnification greater than 10x  
Girdle laser inscribed "LAB GROWN" and "LG262560209"



## The 4Cs Grading Analysis

GCAL 262560209

LAB GROWN DIAMOND\*

**Carat Weight:** 0.51

**Cut:** Very Good

Shape: Round Brilliant  
Measurements: 5.13-5.14x3.14mm  
Polish: Very Good  
External Symmetry: Very Good  
Girdle Thickness: Medium-Sl.Thick  
Culet Size: None

**Color:** H  
Fluorescence: None

**Clarity:** I2  
Identifying Characteristic(s): External Growth Characteristic  
Characteristic Location(s): Crown,Pavilion

\*Comments: This man-made diamond was grown in a laboratory by the CVD method, and has the same chemical, physical, and optical properties as a natural earth mined diamond.

This lab grown diamond is classified as Type IIa, which is the most chemically pure type of diamond, and almost or entirely devoid of impurities. Only 1-2% of natural earth mined diamonds are Type IIa, whereas, colorless and near-colorless CVD lab grown diamonds are usually Type IIa.

## Photomicrographs:

Actual images of the crown (top) and pavilion (bottom) of this diamond photographed at magnifications up to 10x.



## Light Performance Profile

### Optical Brilliance Analysis:

Brilliance is the overall return of light to the viewer. The brilliance image is a representation of (a) white areas of light return, or brilliance, and (b) dark-blue areas of light loss.

Excellent



### Optical Symmetry Analysis:

The colored areas of the symmetry image are indications of light handling ability, giving a visual representation of proportions and facet alignment.

Very Good



### Proportion Diagram:

The proportion diagram illustrates the actual dimensions as recorded by optical scanning technology.



**GCAL**  
GEM CERTIFICATION & ASSURANCE LAB  
INTEGRITY GUARANTEED™



580 Fifth Avenue, New York, NY 10036, T 212.869.8985 F 212.869.2315  
[www.DiamondID.com](http://www.DiamondID.com), [www.GemFacts.com](http://www.GemFacts.com), [www.Gemprint.com](http://www.Gemprint.com)

© 2016 GCAL

© 2015 Gem Certification & Assurance Lab, Inc. All Rights Reserved