

## Identification Data

June 27, 2016

LAB GROWN DIAMOND   
Certificate Number 261720042

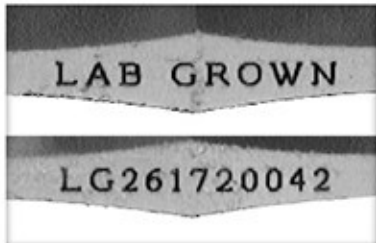
**Gemprint**

Gemprint is the unique optical fingerprint for positive identification of your lab grown diamond. Register your lab grown diamond at [www.Gemprint.com](http://www.Gemprint.com) and receive insurance discounts up to 10%.



### Laser Inscription:

Actual image of the inscription photographed at magnification greater than 10x  
Girdle laser inscribed "LAB GROWN" and "LG261720042"



## The 4Cs Grading Analysis

GCAL 261720042

LAB GROWN DIAMOND\*

**Carat Weight:**

**0.92**

**Cut:**

**Good**

Shape:

Round Brilliant

Measurements:

6.15-6.19x3.93mm

Polish:

Good

External Symmetry:

Very Good

Girdle Thickness:

Thin-SI.Thick

Culet Size:

None

**Color:**

**I**

Fluorescence:

None

**Clarity:**

**VS1**

Identifying Characteristic(s): Internal Growth Characteristic/  
External Growth Characteristic

Characteristic Location(s): Table, Bezel/Pavilion

\*Comments: This man-made diamond was grown in a laboratory by the CVD method, and has the same chemical, physical, and optical properties as a natural earth mined diamond.

This lab grown diamond is classified as Type IIa, which is the most chemically pure type of diamond, and almost or entirely devoid of impurities. Only 1-2% of natural earth mined diamonds are Type IIa, whereas, colorless and near-colorless CVD lab grown diamonds are usually Type IIa.

### Photomicrographs:

Actual images of the crown (top) and pavilion (bottom) of this diamond photographed at magnifications up to 10x.



## Light Performance Profile

### Optical Brilliance Analysis:

Brilliance is the overall return of light to the viewer. The brilliance image is a representation of (a) white areas of light return, or brilliance, and (b) dark-blue areas of light loss.

Excellent



### Optical Symmetry Analysis:

The colored areas of the symmetry image are indications of light handling ability, giving a visual representation of proportions and facet alignment.

Good



### Proportion Diagram:

The proportion diagram illustrates the actual dimensions as recorded by optical scanning technology.



**GCAL**  
GEM CERTIFICATION & ASSURANCE LAB  
INTEGRITY GUARANTEED™



580 Fifth Avenue, New York, NY 10036, T 212.869.8985 F 212.869.2315  
[www.DiamondID.com](http://www.DiamondID.com), [www.GemFacts.com](http://www.GemFacts.com), [www.Gemprint.com](http://www.Gemprint.com)

© 2016 GCAL

© 2015 Gem Certification & Assurance Lab, Inc. All Rights Reserved