



ELECTRONIC COPY

LABORATORY GROWN DIAMOND REPORT

August 30, 2022	
IGI Report Number	LG530228431
Description	LABORATORY GROWN DIAMOND
Shape and Cutting Style	SQUARE CUSHION MODIFIED BRILLIANT
Measurements	6.58 X 6.52 X 4.54 MM

GRADING RESULTS

Carat Weight	1.55 CARAT
Color Grade	H
Clarity Grade	VS 1

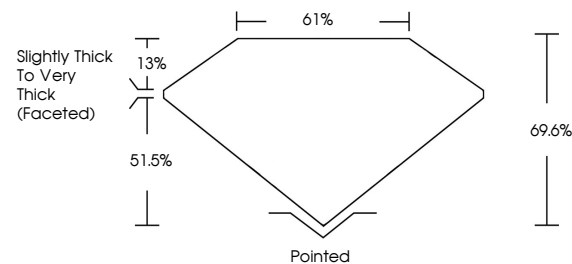
ADDITIONAL GRADING INFORMATION

Polish	EXCELLENT
Symmetry	EXCELLENT
Fluorescence	NONE

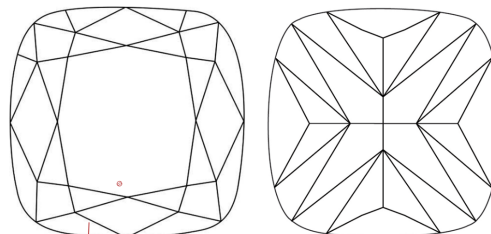
Inscription(s) **LABGROWN IGI LG530228431**
 Comments: This Laboratory Grown Diamond was created by Chemical Vapor Deposition (CVD) growth process and may include post-growth treatment.
 Type IIa

LG530228431

PROPORTIONS



CLARITY CHARACTERISTICS



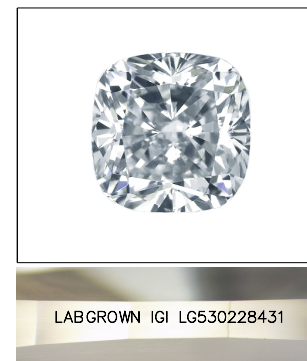
KEY TO SYMBOLS

Red symbols indicate internal characteristics.
Green symbols indicate external characteristics.

LABORATORY GROWN
DIAMOND REPORT

GRADING SCALES

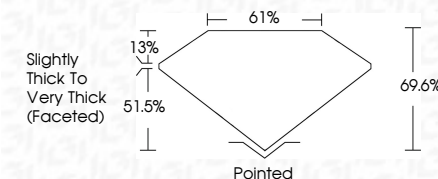
COLOR GRADING SCALE	CL		NC	FT	VLT	LT
	COLORLESS D-F		NEAR COLORLESS G-J	FAINT K-M	VERY LIGHT N-R	LIGHT S-Z
CLARITY (10x) GRADING SCALE	FL	IF	VVS	VS	SI	I
	FLAWLESS INTERNALLY FLAWLESS		VERY VERY SLIGHTLY INCLUDED	VERY SLIGHTLY INCLUDED	SLIGHTLY INCLUDED	INCLUDED

LASERSCRIBESM

Sample Image Used



August 30, 2022	
IGI Report Number	LG530228431
Description	LABORATORY GROWN DIAMOND
Shape and Cutting Style	SQUARE CUSHION MODIFIED BRILLIANT
Measurements	6.58 X 6.52 X 4.54 MM
GRADING RESULTS	
Carat Weight	1.55 CARAT
Color Grade	H
Clarity Grade	VS 1



ADDITIONAL GRADING INFORMATION

Polish	EXCELLENT
Symmetry	EXCELLENT
Fluorescence	NONE
Inscription(s)	LABGROWN IGI LG530228431

Comments: This Laboratory Grown Diamond was created by Chemical Vapor Deposition (CVD) growth process and may include post-growth treatment.
Type IIa



© IGI 2020, International Gemological Institute

FD - 10 20

www.igi.org

THIS DOCUMENT WAS PRODUCED WITH THE FOLLOWING SECURITY MEASURES: SPECIAL DOCUMENT PAPER, INK SCREENS, WATERMARK BACKGROUND DESIGNS, HOLOGRAM AND OTHER SECURITY FEATURES NOT LISTED AND DO EXCEED DOCUMENT SECURITY INDUSTRY GUIDELINES

August 30, 2022	G/ Report No. LGS80229431	SQUARE CLONISH MOOPIED BRILLIANT
5.68 X 5.68 X 4.52 X 4.54 MM.	Color Weight	1.56 CARAT
H	Color Grade	VS 1
Clarity Grade	Depth	69.6%
Table	Girdle	61%
Slightly Thick To Very Thick (Faceted)	Culet	Poined
Polish	Symmetry	EXCELLENT
Fluorescence	Inscriptions(s)	EXCELLENT
LABGROWN IG1	Comments:	NONE
LGS80229431	This Laboratory Grown Diamond was	certified as being a Natural Diamond
Type Ila	(CVD) growth process and may include post-growth treatment.	