



ELECTRONIC COPY

LABORATORY GROWN DIAMOND REPORT

May 24, 2022	
IGI Report Number	LG528233608
Description	LABORATORY GROWN DIAMOND
Shape and Cutting Style	ROUND BRILLIANT
Measurements	8.37 - 8.47 X 5.16 MM

GRADING RESULTS

Carat Weight	2.23 CARATS
Color Grade	G
Clarity Grade	VS 2
Cut Grade	IDEAL

ADDITIONAL GRADING INFORMATION

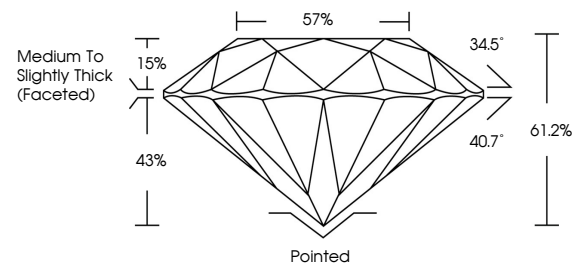
Polish	EXCELLENT
Symmetry	EXCELLENT
Fluorescence	NONE

Inscription(s) LABGROWN IGI LG528233608

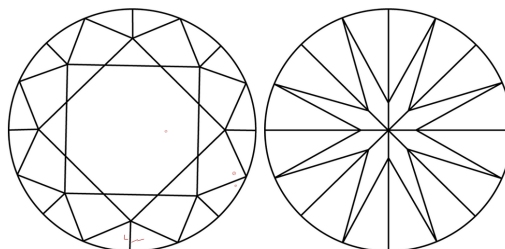
Comments: This Laboratory Grown Diamond was created by Chemical Vapor Deposition (CVD) growth process and may include post-growth treatment. Type IIa

LG528233608

PROPORTIONS



CLARITY CHARACTERISTICS

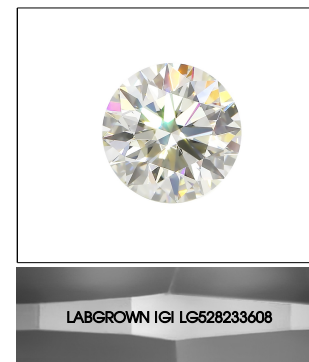


KEY TO SYMBOLS

Red symbols indicate internal characteristics.
Green symbols indicate external characteristics.

GRADING SCALES

COLOR GRADING SCALE	CL		NC	FT	VLT	LT
	COLORLESS D-F		NEAR COLORLESS G-J	FAINT K-M	VERY LIGHT N-R	LIGHT S-Z
CLARITY (10x) GRADING SCALE	FL	IF	VVS	VS	SI	I
	FLAWLESS INTERNALLY FLAWLESS		VERY VERY SLIGHTLY INCLUDED	VERY SLIGHTLY INCLUDED	SLIGHTLY INCLUDED	INCLUDED

LASERSCRIBESM

Sample Image Used



© IGI 2020, International Gemological Institute

FD - 10 20

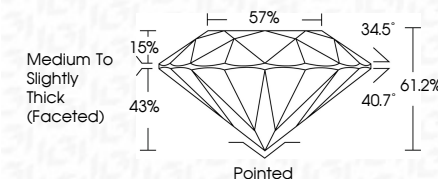
LABORATORY GROWN DIAMOND REPORT

May 24, 2022	
IGI Report Number	LG528233608
Description	LABORATORY GROWN

Shape and Cutting Style	ROUND BRILLIANT
Measurements	8.37 - 8.47 X 5.16 MM

GRADING RESULTS

Carat Weight	2.23 CARATS
Color Grade	G
Clarity Grade	VS 2
Cut Grade	IDEAL



ADDITIONAL GRADING INFORMATION

Polish	EXCELLENT
Symmetry	EXCELLENT
Fluorescence	NONE
Inscription(s)	LABGROWN IGI LG528233608

Comments: This Laboratory Grown Diamond was created by Chemical Vapor Deposition (CVD) growth process and may include post-growth treatment.
Type IIa



May 24, 2022	IGI Report No. LGS28233608
ROUND BRILLIANT	
Color Weight	2.23 CARATS
Carat Weight	VS 2
Color Grade	IDEAL
Cut Grade	61.2%
Depth	57%
Table	Medium to Slightly Thick (Fostered)
Girdle	Poished
Culet	EXCELLENT
Polish	EXCELLENT
Symmetry	NONE
Fluorescence	LARGELY IGI
Inscription(s)	LSG28233608
Comments:	This Laboratory Grown Diamond was created by Chemical Vapor Deposition (CVD) growth process and may include post-growth treatment.

Comments:

This Laboratory Grown Diamond was created by Chemical Vapor Deposition (CVD) growth process and may include post-growth treatment.