



INTERNATIONAL GEMOLOGICAL INSTITUTE

ELECTRONIC COPY

LABORATORY GROWN DIAMOND REPORT

LG528232940

LABORATORY GROWN DIAMOND REPORT

IGI LABORATORY GROWN DIAMOND IDENTIFICATION REPORT

May 31, 2022
 IGI Report Number LG528232940
 Description LABORATORY GROWN DIAMOND
 Shape and Cutting Style ROUND BRILLIANT
 Measurements 4.29 - 4.33 X 2.65 MM

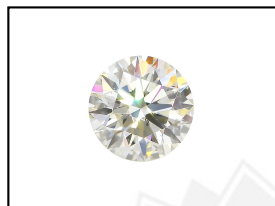
GRADING RESULTS

Carat Weight 0.30 CARAT
 Color Grade K
 Clarity Grade VS 1
 Cut Grade IDEAL

ADDITIONAL GRADING INFORMATION

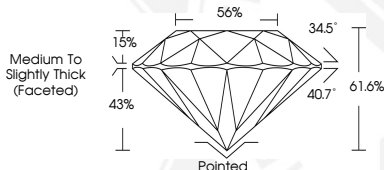
Polish EXCELLENT
 Symmetry VERY GOOD
 Fluorescence NONE
 Inscription(s) LABGROWN IGI LG528232940

Comments: This Laboratory Grown Diamond was created by Chemical Vapor Deposition (CVD) growth process and may include post-growth treatment.
 Type IIa
 Faint Brown



LABGROWN IGI LG528232940

LASERSCRIBE SM
 Sample Images Used



IGI LABORATORY GROWN DIAMOND ID REPORT

May 31, 2022
 IGI Report Number LG528232940
ROUND BRILLIANT
4.29 - 4.33 X 2.65 MM
 Carat Weight 0.30 CARAT
 Color Grade K
 Clarity Grade VS 1
 Cut Grade IDEAL
 Polish EXCELLENT
 Symmetry VERY GOOD
 Fluorescence NONE
 Inscription(s) LABGROWN IGI LG528232940

Comments: This Laboratory Grown Diamond was created by Chemical Vapor Deposition (CVD) growth process and may include post-growth treatment.
 Type IIa
 Faint Brown

IGI LABORATORY GROWN DIAMOND ID REPORT

May 31, 2022
 IGI Report Number LG528232940
ROUND BRILLIANT
4.29 - 4.33 X 2.65 MM
 Carat Weight 0.30 CARAT
 Color Grade K
 Clarity Grade VS 1
 Cut Grade IDEAL
 Polish EXCELLENT
 Symmetry VERY GOOD
 Fluorescence NONE
 Inscription(s) LABGROWN IGI LG528232940

Comments: This Laboratory Grown Diamond was created by Chemical Vapor Deposition (CVD) growth process and may include post-growth treatment.
 Type IIa
 Faint Brown



THIS DOCUMENT WAS PRODUCED WITH THE FOLLOWING SECURITY MEASURES: SPECIAL DOCUMENT PAPER, INK SCREENS, WATERMARK, BACKGROUND DESIGN, HOLOGRAM AND OTHER SECURITY FEATURES NOT LISTED AND DO EXCEED DOCUMENT SECURITY INDUSTRY GUIDELINES.

For terms & conditions and to verify this report, please visit www.igi.org