



INTERNATIONAL GEMOLOGICAL INSTITUTE

ELECTRONIC COPY

LABORATORY GROWN DIAMOND REPORT

LG520299821

IGI LABORATORY GROWN DIAMOND ID REPORT

May 20, 2022

IGI Report Number **LG520299821**

**SQUARE CUSHION MODIFIED
BRILLIANT**

5.49 X 5.46 X 3.77 MM

Carat Weight	0.92 CARAT
Color Grade	E
Clarity Grade	SI 1
Polish	VERY GOOD
Symmetry	EXCELLENT
Fluorescence	NONE
Inscription(s)	LABGROWN IGI LG520299821

Comments: This Laboratory Grown Diamond was created by Chemical Vapor Deposition (CVD) growth process and may include post-growth treatment.
Type IIa

LABORATORY GROWN DIAMOND REPORT

IGI LABORATORY GROWN DIAMOND IDENTIFICATION REPORT

May 20, 2022

IGI Report Number

LG520299821

Description

LABORATORY GROWN DIAMOND

Shape and Cutting Style

SQUARE CUSHION MODIFIED BRILLIANT

Measurements

5.49 X 5.46 X 3.77 MM

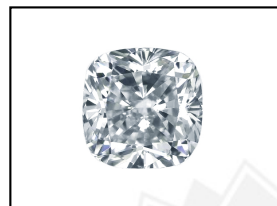
GRADING RESULTS

Carat Weight	0.92 CARAT
Color Grade	E
Clarity Grade	SI 1

ADDITIONAL GRADING INFORMATION

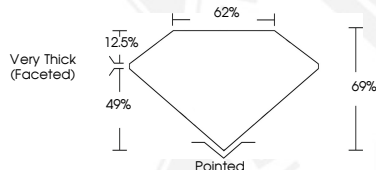
Polish	VERY GOOD
Symmetry	EXCELLENT
Fluorescence	NONE
Inscription(s)	LABGROWN IGI LG520299821

Comments: This Laboratory Grown Diamond was created by Chemical Vapor Deposition (CVD) growth process and may include post-growth treatment.
Type IIa



LABGROWN IGI LG520299821

LASERSCRIBESM
Sample Images Used



IGI LABORATORY GROWN DIAMOND ID REPORT

May 20, 2022

IGI Report Number **LG520299821**

**SQUARE CUSHION MODIFIED
BRILLIANT**

5.49 X 5.46 X 3.77 MM

Carat Weight	0.92 CARAT
Color Grade	E
Clarity Grade	SI 1
Polish	VERY GOOD
Symmetry	EXCELLENT
Fluorescence	NONE
Inscription(s)	LABGROWN IGI LG520299821

Comments: This Laboratory Grown Diamond was created by Chemical Vapor Deposition (CVD) growth process and may include post-growth treatment.
Type IIa



THIS DOCUMENT WAS PRODUCED WITH THE FOLLOWING SECURITY MEASURES: SPECIAL DOCUMENT PAPER, INK SCREENS, WATERMARK, BACKGROUND DESIGN, HOLOGRAM AND OTHER SECURITY FEATURES NOT LISTED AND DO EXCEED DOCUMENT SECURITY INDUSTRY GUIDELINES.

For terms & conditions and to verify this report, please visit www.igi.org