



ELECTRONIC COPY

LABORATORY GROWN DIAMOND REPORT

March 15, 2022	
IGI Report Number	LG514250651
Description	LABORATORY GROWN DIAMOND
Shape and Cutting Style	EMERALD CUT
Measurements	7.84 X 5.65 X 3.85 MM

GRADING RESULTS

Carat Weight	1.69 CARAT
Color Grade	F
Clarity Grade	SI 2

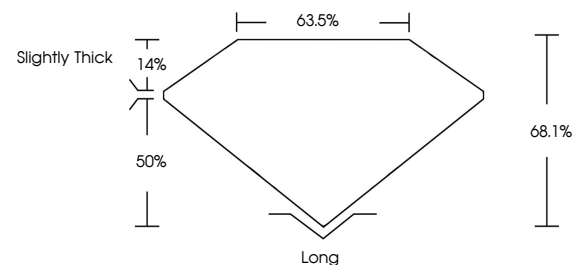
ADDITIONAL GRADING INFORMATION

Polish	EXCELLENT
Symmetry	VERY GOOD
Fluorescence	NONE
Inscription(s)	LABGROWN G LG514250651

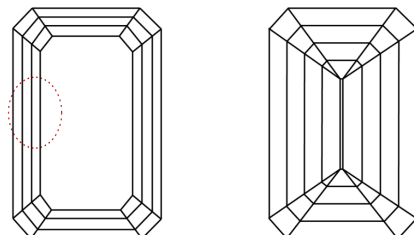
Comments: This Laboratory Grown Diamond was created by Chemical Vapor Deposition (CVD) growth process and may include post-growth treatment
Type IIa

LG514250651

PROPORTIONS



CLARITY CHARACTERISTICS



KEY TO SYMBOLS

Red symbols indicate internal characteristics.
Green symbols indicate external characteristics.

LABORATORY GROWN
DIAMOND REPORT

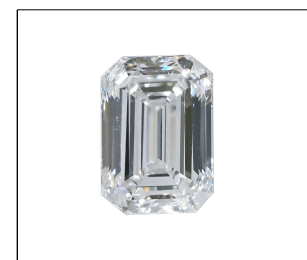
GRADING SCALES

COLOR GRADING SCALE	CL		NC		FT		VLT		LT	
	COLORLESS D-F		NEAR COLORLESS G-J		FAINT K-M		VERY LIGHT N-R		LIGHT S-Z	
CLARITY (10x) GRADING SCALE	FL	IF	VVS		VS		SI		I	
	FLAWLESS INTERNALLY FLAWLESS		VERY VERY SLIGHTLY INCLUDED		VERY SLIGHTLY INCLUDED		SLIGHTLY INCLUDED		INCLUDED	

The laboratory grown diamond described in this Report ("Report") has been graded, tested, analyzed, examined and/or inscribed by International Gemological Institute ("IGI"). A laboratory grown diamond is one that has essentially the same chemical, physical and optical properties as a mined diamond, with the exception of being grown by synthetic means and/or under controlled conditions. IGI is not a member of the International Gemological Union ("IGU") and is not affiliated with the International Gemological Union. IGI is currently available to IGI, including, without limitation, 10X magnification, corrected triplet loupe, binocular microscope, master color comparison stones, non-contact optical spectrometer, diamond detector, and/or other instruments and/or processes as deemed appropriate by IGI. This Report includes advanced security features. A duly accredited gemologist or jeweler can advise you with respect to the importance of and interrelationship between cut, color, clarity and carat weight.

THIS REPORT IS NEITHER A GUARANTEE, VALUATION, NOR APPRAISAL OF THE GEMSTONE DESCRIBED HEREIN. PLEASE REVIEW THE LIMITATIONS AND RESTRICTIONS SET FORTH ONLINE. FOR MORE INFORMATION, VISIT WWW.IGI.COM. LIMITATIONS AND DISCLAIMERS, PLEASE GO TO WWW.IGI.COM/LEGAL/LEGAL_BUYER_GUIDE.

© INTERNATIONAL GEMOLOGICAL INSTITUTE, INC.



LABGROWN | G | G514250651

LASERSCRIBESM

Sample Image Used



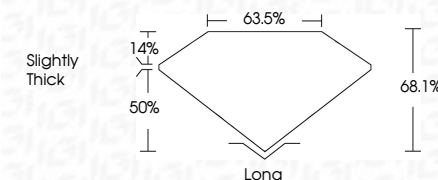
© IGI 2020, International Gemological Institute

FD - 10 20

www.igi.org

LABORATORY GROWN DIAMOND REPORT

March 15, 2022	
IGI Report Number	LG514250651
Description	LABORATORY GROWN DIAMOND
Shape and Cutting Style	EMERALD CUT
Measurements	7.84 X 5.65 X 3.85 MM
GRADING RESULTS	
Carat Weight	1.69 CARAT
Color Grade	F
Clarity Grade	SI 2



ADDITIONAL GRADING INFORMATION

Polish	EXCELLENT
Symmetry	VERY GOOD
Fluorescence	NONE
Inscription(s)	LABGROWN IGI LG514250651

Inscription(s) LABGROWN IGI LG514250651

Comments: This Laboratory Grown Diamond was created by Chemical Vapor Deposition (CVD) growth process and may include post-growth treatment
Type IIa



March 15, 2022	IGI Report No. IGS14250451
EXPERAND CUT	
1.69 CARAT	7.64 X 5.6 X 3.95 MM
F	Color Grade
S/2	Clarity Grade
68.1%	Depth
63.5%	Table
Slightly Thick	Grade
Long	Quiet
EXCELLENT	Polish
VERY GOOD	Symmetry
NONE	Fluorescence
LABGROWN IGI	Inscriptions(s)
LSI 4250451	
Comments: This Laboratory Grown Diamond was created by Chemical Vapor Deposition (CVD) growth process and may include some growth treatment.	
	Trace IGI