



# INTERNATIONAL GEMOLOGICAL INSTITUTE

ELECTRONIC COPY

## LABORATORY GROWN DIAMOND REPORT

### IGI LABORATORY GROWN DIAMOND ID REPORT

10/27/2021  
IGI Report Number **LG496140112**  
**ROUND BRILLIANT**  
**5.46 - 5.48 X 3.31 MM**  
Carat Weight 0.60 CARAT  
Color Grade H  
Clarity Grade SI 1  
Cut Grade IDEAL  
Polish EXCELLENT  
Symmetry EXCELLENT  
Fluorescence NONE  
Inscription(s) LABGROWN IGI  
LG496140112

Comments: Hearts and Arrows pattern viewable with H&A scope. This Laboratory Grown Diamond was created by Chemical Vapor Deposition (CVD) growth process and may include post-growth treatment Type IIa

### IGI LABORATORY GROWN DIAMOND ID REPORT

10/27/2021  
IGI Report Number **LG496140112**  
**ROUND BRILLIANT**  
**5.46 - 5.48 X 3.31 MM**  
Carat Weight 0.60 CARAT  
Color Grade H  
Clarity Grade SI 1  
Cut Grade IDEAL  
Polish EXCELLENT  
Symmetry EXCELLENT  
Fluorescence NONE  
Inscription(s) LABGROWN IGI  
LG496140112

Comments: Hearts and Arrows pattern viewable with H&A scope. This Laboratory Grown Diamond was created by Chemical Vapor Deposition (CVD) growth process and may include post-growth treatment Type IIa

## LABORATORY GROWN DIAMOND REPORT

### IGI LABORATORY GROWN DIAMOND IDENTIFICATION REPORT

10/27/2021  
IGI Report Number LG496140112  
Shape and Cutting Style ROUND BRILLIANT  
Measurements 5.46 - 5.48 X 3.31 MM

### GRADING RESULTS

Carat Weight 0.60 CARAT  
Color Grade H  
Clarity Grade SI 1  
Cut Grade IDEAL

### ADDITIONAL GRADING INFORMATION

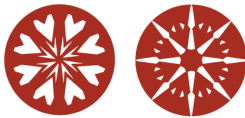
Polish EXCELLENT  
Symmetry EXCELLENT  
Fluorescence NONE  
Inscription(s) LABGROWN IGI LG496140112

Comments: Hearts and Arrows pattern viewable with H&A scope. This Laboratory Grown Diamond was created by Chemical Vapor Deposition (CVD) growth process and may include post-growth treatment Type IIa

This Laboratory Grown Diamond (LGD) described in this Report has been analyzed, graded and Laserscribed® by International Gemological Institute (IGI). A LGD has essentially the chemical, physical and optical properties as a mined diamond, with the exception of being man-made (a manufactured product). LGD's are typically produced by CVD (chemical vapor deposition) or by HPHT (high pressure high temperature) growth processes and may include post growth modifications to change the color. IGI utilizes the most advanced techniques and equipment currently available including, binocular microscopes, diamond color masters, non-contact optical measuring device, a wide range analytical techniques including FTIR, UV-VIS-NIR, raman spectroscopy, and fluorescence analysis at various excitation wavelengths. This Report includes advanced security features. This Report is neither a guarantee, valuation nor appraisal and by making the report IGI does not agree to purchase or replace the article.

INTERNATIONAL GEMOLOGICAL INSTITUTE, INC

LG496140112



HEARTS & ARROWS

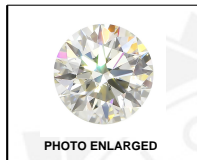
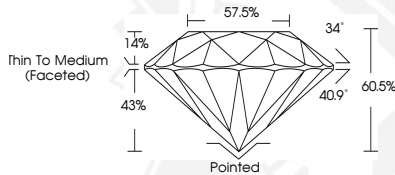


PHOTO ENLARGED



LASERSCRIBE SM



THIS DOCUMENT WAS PRODUCED WITH THE FOLLOWING SECURITY MEASURES: SPECIAL DOCUMENT PAPER, INK SCREENS, WATERMARK BACKGROUND DESIGNS, HOLOGRAM AND OTHER SECURITY FEATURES NOT LISTED AND DO EXCEED DOCUMENT SECURITY INDUSTRY GUIDELINES.

For Terms & Conditions and to verify this report, please visit [www.igi.org](http://www.igi.org)