



06/27/2021	
IGI Report Number	LG476160401
Shape and Cutting Style	PRINCESS CUT
Measurements	7.88 x 5.62 x 3.87 mm
GRADING RESULTS	
Carat Weight	1.72 CARAT
Color Grade	I
Clarity Grade	VVS 2
ADDITIONAL GRADING INFORMATION	
Polish	EXCELLENT
Symmetry	EXCELLENT
Fluorescence	NONE
Inscription(s)	LABGROWN IGI LG476160401

Comments: This Laboratory Grown Diamond was created by Chemical Vapor Deposition (CVD) growth process and may include post-growth treatment
Type IIa

LG476160401

Diagram illustrating the cross-section of a diamond-shaped structure, showing dimensions and features:

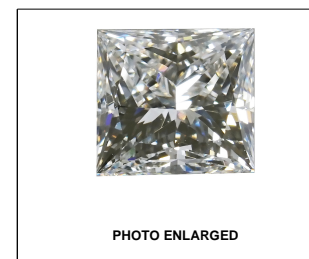
- Top width: 64%
- Height: 68.9%
- Bottom width: 51%
- Left width: 13%
- Left side feature: Slightly Thick To Thick
- Bottom feature: Pointed

Red symbols indicate internal characteristics.
Green symbols indicate external characteristics.

COLOR GRADING SCALE	CL		NC		FT		VLT		LT	
	COLORLESS D-F		NEAR COLORLESS G-J		FAINT K-M		VERY LIGHT N-R		LIGHT S-Z	
CLARITY (10x) GRADING SCALE	FL IF		VVS		VS		SI		I	
	FLAWLESS INTERNALLY FLAWLESS		VERY VERY SLIGHTLY INCLUDED		VERY SLIGHTLY INCLUDED		SLIGHTLY INCLUDED		INCLUDED	

The laboratory growdiamond described in this Report ("Report") has been graded, tested, analyzed, examined and/or inscribed by International Gemological Institute ("IGI"). A laboratory grown diamond is one that has essentially the same chemical, physical and optical properties as a mined diamond, with the exception of being grown by man rather than nature. IGI's grading system includes the following techniques and equipment currently available to IGI, including, without limitation, 10X magnification, corrected triplet loupe, binocular microscope, master color comparison stones, non-contact-optical spectrometer, ultraviolet fluorescence spectrometer, Fourier transform infrared instruments and/or processes as deemed appropriate by IGI. This Report includes advanced security features. A duly accredited gemologist or jeweler can advise you with respect to the importance of and interrelationship between cut, color, clarity and carat weight.

THIS REPORT IS NEITHER A GUARANTEE, VALUATION, NOR APPRAISAL OF THE GEMSTONE DESCRIBED HEREIN. PLEASE CONSULT THE LIMITATIONS AND RESTRICTIONS SET FORTH ONLINE FOR THIS REPORT. INFORMATION REGARDING THESE LIMITATIONS AND DISCLAIMERS, PLEASE GO TO WWW.IGILABS.COM OR CALL 866-979-1618



LABGROWN | G | LG47616040

LASERSCRIBESM

LABORATORY GROWN DIAMOND REPORT

06/27/2021	
IGI Report Number	LG476160401
Shape and Cutting Style	PRINCESS CUT
Measurements	7.88 x 5.62 x 3.87 mm
GRADING RESULTS	
Carat Weight	1.72 CARAT
Color Grade	F
Clarity Grade	VVS 2

Polish	EXCELLENT
Symmetry	EXCELLENT
Fluorescence	NONE
Inscription(s)	LABGROWN IGI LG476160401

Comments: This Laboratory Grown Diamond was created by Chemical Vapor Deposition (CVD) growth process and may include post-growth treatment
Type IIa

