



LG468176372

LABORATORY GROWN DIAMOND REPORT

12/27/2020
IGI Report Number LG468176372
Shape and Cutting Style PRINCESS CUT
Measurements 5.65 x 5.64 x 4.07 mm

GRADING RESULTS

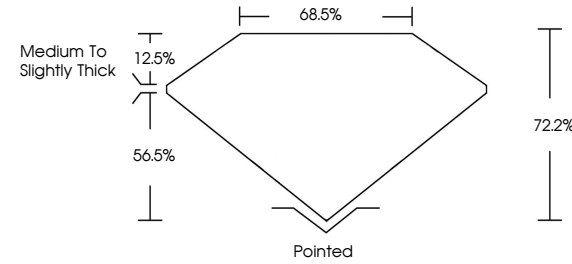
Carat Weight 1.15 CARAT
Color Grade G
Clarity Grade VVS 2

ADDITIONAL GRADING INFORMATION

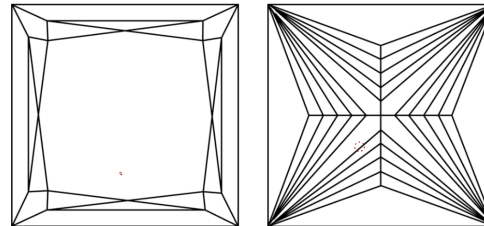
Polish EXCELLENT
Symmetry EXCELLENT
Fluorescence NONE
Inscription(s) LABGROWN IGI LG468176372

Comments: This Chemical Vapor Deposition (CVD) laboratory grown diamond is classified as Type IIa.

PROPORTIONS



CLARITY CHARACTERISTICS



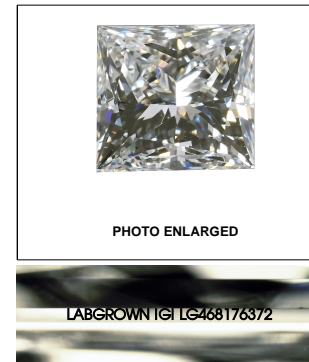
KEY TO SYMBOLS

Red symbols indicate internal characteristics.
Green symbols indicate external characteristics.

GRADING SCALES

Table with 5 columns for Color Grading Scale (CL, NC, FT, VLT, LT) and Clarity (10x) Grading Scale (FL, IF, VVS, VS, SI, I).

The laboratory grown diamond described in this Report (Report) has been graded, tested, analyzed, examined and/or inscribed by International Gemological Institute (IGI). A laboratory grown diamond is one that has essentially the same chemical, physical and optical properties as a mined diamond...



LASERSCRIBE SM

12/27/2020
IGI Report Number LG468176372
Shape and Cutting Style PRINCESS CUT
Measurements 5.65 x 5.64 x 4.07 mm

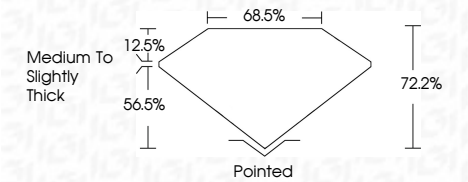
GRADING RESULTS

Carat Weight 1.15 CARAT
Color Grade G
Clarity Grade VVS 2

ADDITIONAL GRADING INFORMATION

Polish EXCELLENT
Symmetry EXCELLENT
Fluorescence NONE
Inscription(s) LABGROWN IGI LG468176372

Comments: This Chemical Vapor Deposition (CVD) laboratory grown diamond is classified as Type IIa.



IGI

12/27/2020
IGI Report No. LG468176372
PRINCESS CUT
5.65 x 5.64 x 4.07 mm
Carat Weight 1.15 CARAT
Color Grade G
Clarity Grade VVS 2
Depth 72.2%
Table 68.5%
Girdle Medium To Slightly Thick
Culet Pointed
Polish EXCELLENT
Symmetry EXCELLENT
Fluorescence NONE
Inscription(s) LABGROWN IGI LG468176372
Comments: This Chemical Vapor Deposition (CVD) laboratory grown diamond is classified as Type IIa.