



LABORATORY GROWN DIAMOND REPORT

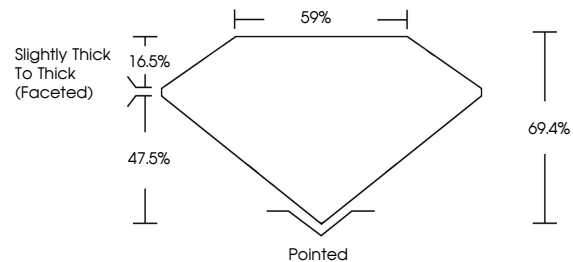
LG468175802

GRADING SCALES

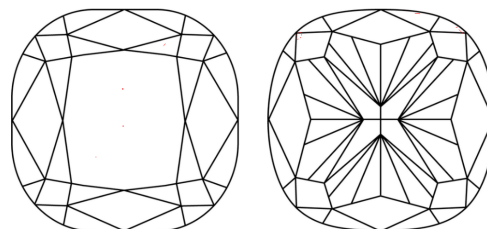
Table with 5 columns for Color Grading Scale (CL, NC, FT, VLT, LT) and 5 columns for Clarity (10x) Grading Scale (FL, IF, VVS, VS, SI, I).

The laboratory grown diamond described in this Report (Report) has been graded, tested, analyzed, examined and/or inscribed by International Gemological Institute (IGI). A laboratory grown diamond is one that has essentially the same chemical, physical and optical properties as a mined diamond...

PROPORTIONS

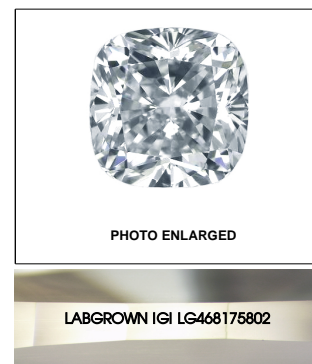


CLARITY CHARACTERISTICS



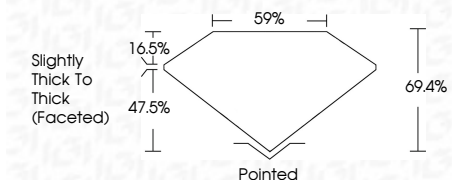
KEY TO SYMBOLS

Red symbols indicate internal characteristics. Green symbols indicate external characteristics.



LASERSCRIBESM

12/27/2020 IGI Report Number LG468175802 Shape and Cutting Style SQUARE CUSHION MODIFIED BRILLIANT Measurements 6.58 x 6.35 x 4.41 mm GRADING RESULTS Carat Weight 1.58 CARAT Color Grade I Clarity Grade VVS 1



ADDITIONAL GRADING INFORMATION

Polish EXCELLENT Symmetry VERY GOOD Fluorescence NONE Inscription(s) LABGROWN IGI LG468175802

Comments: This Chemical Vapor Deposition (CVD) laboratory grown diamond is classified as Type IIa.

12/27/2020 IGI Report Number LG468175802 Shape and Cutting Style SQUARE CUSHION MODIFIED BRILLIANT Measurements 6.58 x 6.35 x 4.41 mm

GRADING RESULTS Carat Weight 1.58 CARAT Color Grade I Clarity Grade VVS 1

ADDITIONAL GRADING INFORMATION Polish EXCELLENT Symmetry VERY GOOD Fluorescence NONE Inscription(s) LABGROWN IGI LG468175802

Comments: This Chemical Vapor Deposition (CVD) laboratory grown diamond is classified as Type IIa.



IGI

12/27/2020 IGI Report No LG468175802 SQUARE CUSHION MODIFIED BRILLIANT Carat Weight 1.58 CARAT Color Grade I Clarity Grade VVS 1 Depth 69.4% Table 59% Slightly Thick To Thick (Faceted) Pointed EXCELLENT VERY GOOD NONE LABGROWN IGI LG468175802 Comments: This Chemical Vapor Deposition (CVD) laboratory grown diamond is classified as Type IIa.