



PROPORTIONS

Thick To Very Thick (Faceted)

62%

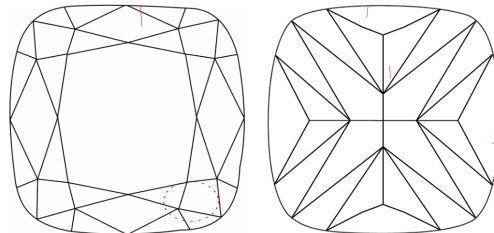
69.7%

13.5%

51.5%

Pointed

CLARITY CHARACTERISTICS



KEY TO SYMBOLS

Red symbols indicate internal characteristics.
Green symbols indicate external characteristics.

ELECTRONIC COPY

LABORATORY GROWN DIAMOND REPORT

GRADING SCALES

| | | | | | | | | | | | | |
|-----------------------------|------------------------------|--|-----------------------------|--|------------------------|--|-------------------|--|-----------|--|---|--|
| COLOR GRADING SCALE | CL | | NC | | FT | | VLT | | LT | | | |
| | COLORLESS D-F | | NEAR COLORLESS G-J | | FAINT K-M | | VERY LIGHT N-R | | LIGHT S-Z | | | |
| CLARITY (10x) GRADING SCALE | FL | | IF | | VVS | | VS | | SI | | I | |
| | FLAWLESS INTERNALLY FLAWLESS | | VERY VERY SLIGHTLY INCLUDED | | VERY SLIGHTLY INCLUDED | | SLIGHTLY INCLUDED | | INCLUDED | | | |

The laboratory growdiamond described in this Report (Report) has been graded, tested, analyzed, examined and/or inscribed by International Gemological Institute (I.G.I.). A laboratory grown diamond is one that has essentially the same chemical, physical and optical properties as a natural diamond. I.G.I. is a laboratory owned and operated by a man (a manufactured product). I.G.I. employs and utilizes those techniques and equipment currently available to I.G.I., including, without limitation, 10X magnification, corrected triplet loupe, binocular microscope, master color comparison stones, non-contact-optical spectrophotometer, diamond grading microscope, and/or other instruments and/or processes as deemed appropriate by I.G.I. This Report includes advanced security features. A duly accredited gemologist or jeweler can advise you with respect to the importance of and interrelationship between cut, color, clarity and carat weight.

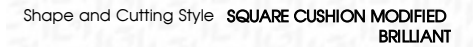
THIS REPORT IS NEITHER A GUARANTEE, VALUATION, NOR APPRAISAL OF THE GEMSTONE DESCRIBED HEREIN. PLEASE REVIEW THE LIMITATIONS AND RESTRICTIONS SET FORTH ONLINE FOR THIS REPORT. IF YOU HAVE ANY QUESTIONS OR CONCERNS REGARDING OUR CLAIMERS, PLEASE GO TO WWW.IGI.ORG OR CALL 1-888-BUY-IGI.

© INTERNATIONAL GEMOLOGICAL INSTITUTE, INC.



PHOTO ENLARGED

LABGROWN IGI LG468174301

LASERSCRIBESM

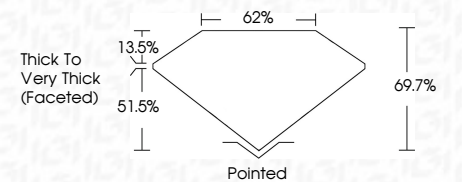
Measurements 7.38 x 7.32 x 5.10 mm

GRADING RESULTS

Carat Weight **2.14 CARATS**

| | |
|-------------|---|
| Color Grade | F |
|-------------|---|

| | |
|---------------|------|
| Clarity Grade | SI 1 |
|---------------|------|



ADDITIONAL GRADING INFORMATION

Polish **EXCELLENT**

Symmetry **EXCELLENT**

Fluorescence **NONE**

Inscription(s) **LABGROWN IGI LG468174301**

Comments: This Chemical Vapor Deposition (CVD) laboratory grown diamond is classified as Type IIa.



IGI

| | | | | | | | | | | | | | |
|------------|----------------------------|----------------------------------|-------------|---------------|-------|-------|--------|------------------------------|---------|-----------|--------------|--------------------------|---|
| 12/27/2020 | IGI Report No. LG468174301 | ESQUE CUSHION MODIFIED BRILLIANT | 2.14 CARATS | F | S11 | 69.7% | 62% | Thick to Very Thick (graded) | Pointed | EXCELLENT | NONE | LARGONIN IGI LG468174301 | <p>This Chemical Vapor Deposition (CVD) laboratory grown diamond is classified as Type IIa.</p> |
| | | 39 x 39 x 13.2 x 6.10 mm | | | | | | | | | | | |
| | | Carat Weight | Color Grade | Clarity Grade | Depth | Table | Girdle | Culet | Polish | Symmetry | Fluorescence | Inscriptions(s) | Comments: |