



LG455010413

LABORATORY GROWN DIAMOND REPORT

02/25/2021 IGI Report Number LG455010413 Shape and Cutting Style PRINCESS CUT Measurements 8.14 x 8.03 x 5.38 mm

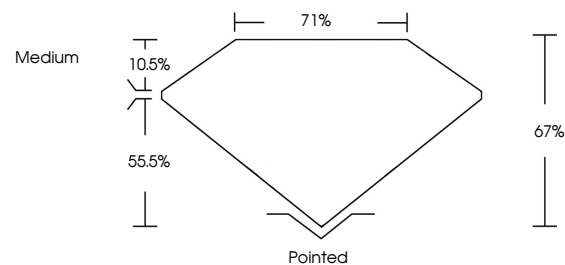
GRADING RESULTS Carat Weight 3.14 CARATS Color Grade E Clarity Grade VVS 2

ADDITIONAL GRADING INFORMATION

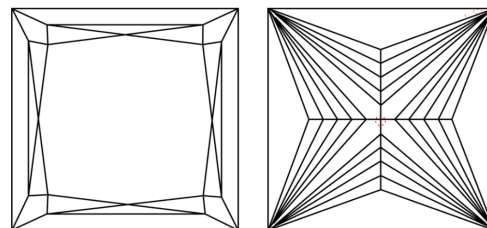
Polish EXCELLENT Symmetry EXCELLENT Fluorescence NONE Inscription(s) LABGROWN IGI LG455010413

Comments: This Chemical Vapor Deposition (CVD) laboratory grown diamond is classified as Type IIa.

PROPORTIONS



CLARITY CHARACTERISTICS



KEY TO SYMBOLS

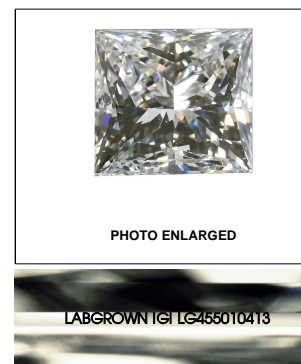
Red symbols indicate internal characteristics. Green symbols indicate external characteristics.

GRADING SCALES

Table with 5 columns for Color Grading Scale (CL to LT) and Clarity (10x) Grading Scale (FL to I).

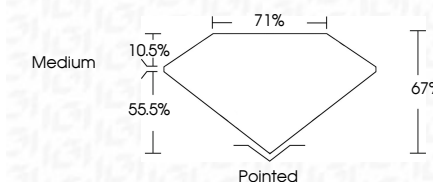
The laboratory grown diamond described in this Report (Report) has been graded, tested, analyzed, examined and/or inscribed by International Gemological Institute (IGI). A laboratory grown diamond is one that has essentially the same chemical, physical and optical properties as a mined diamond...

© INTERNATIONAL GEMOLOGICAL INSTITUTE, INC.



LASERSCRIBE SM

02/25/2021 IGI Report Number LG455010413 Shape and Cutting Style PRINCESS CUT Measurements 8.14 x 8.03 x 5.38 mm GRADING RESULTS Carat Weight 3.14 CARATS Color Grade E Clarity Grade VVS 2



ADDITIONAL GRADING INFORMATION

Polish EXCELLENT Symmetry EXCELLENT Fluorescence NONE Inscription(s) LABGROWN IGI LG455010413

Comments: This Chemical Vapor Deposition (CVD) laboratory grown diamond is classified as Type IIa.



IGI

02/25/2021 IGI Report No LG455010413 PRINCESS CUT 8.14 x 8.03 x 5.38 mm 3.14 CARATS E VVS 2 67% 71% Medium Pointed EXCELLENT EXCELLENT NONE LABGROWN IGI LG455010413

Comments: This Chemical Vapor Deposition (CVD) laboratory grown diamond is classified as Type IIa.