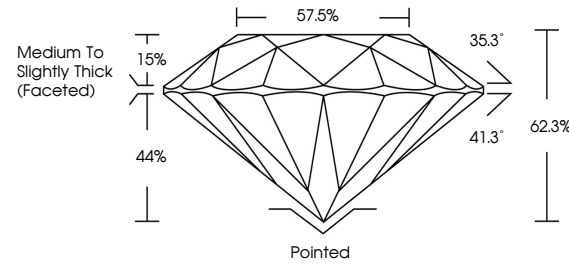




LG455006797

LABORATORY GROWN DIAMOND REPORT

PROPORTIONS



GRADING SCALES

COLOR GRADING SCALE	CL	NC	FT	VL	LT	
	COLORLESS D-F	NEAR COLORLESS G-J	FAINT K-M	VERY LIGHT N-R	LIGHT S-Z	
CLARITY (10X) GRADING SCALE	FL	IF	VVS	VS	SI	I
	FLAWLESS INTERNALLY FLAWLESS	VERY VERY SLIGHTLY INCLUDED	VERY SLIGHTLY INCLUDED	SLIGHTLY INCLUDED	INCLUDED	

The laboratory grown diamond described in this Report (Report) has been graded, tested, analyzed, examined and/or inscribed by International Gemological Institute (IGI). A laboratory grown diamond is one that has essentially the same chemical, physical and optical properties as a mined diamond, with the exception of being grown by man (a manufactured product). IGI employs and utilizes those techniques and equipment currently available to IGI, including, without limitation, 10X magnification, corrected triplet loupe, binocular microscope, master color comparison stones, non-contact-optical measuring device, Diamond Sure™, Diamond View™, Spectrophotometer and such other instruments and/or processes as deemed appropriate by IGI. This Report includes advanced security features. A duly accredited gemologist or jeweler can advise you with respect to the importance of and interrelationship between cut, color, clarity and carat weight. THIS REPORT IS NEITHER A GUARANTEE, VALUATION, NOR APPRAISAL OF THE GEMSTONE DESCRIBED HEREIN. PLEASE REVIEW THE LIMITATIONS AND RESTRICTIONS SET FORTH ONLINE. FOR ADDITIONAL INFORMATION, IMPORTANT LIMITATIONS AND DISCLAIMERS, PLEASE GO TO WWW.IGI.ORG OR CALL 1-888-BUY-IGIS.

© INTERNATIONAL GEMOLOGICAL INSTITUTE, INC.

01/07/2021

IGI Report Number LG455006797

Shape and Cutting Style ROUND BRILLIANT

Measurements 8.42 - 8.45 x 5.25 mm

GRADING RESULTS

Carat Weight 2.29 CARATS

Color Grade G

Clarity Grade VS 1

Cut Grade IDEAL

01/07/2021

IGI Report Number LG455006797

Shape and Cutting Style ROUND BRILLIANT

Measurements 8.42 - 8.45 x 5.25 mm

GRADING RESULTS

Carat Weight 2.29 CARATS

Color Grade G

Clarity Grade VS 1

Cut Grade IDEAL

ADDITIONAL GRADING INFORMATION

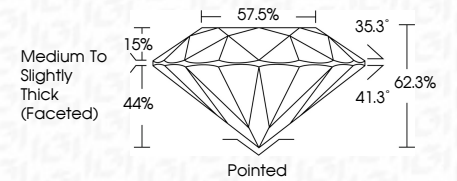
Polish EXCELLENT

Symmetry EXCELLENT

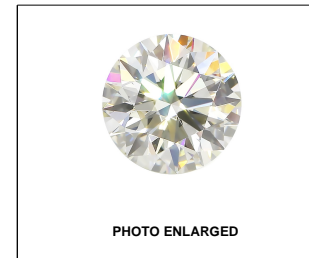
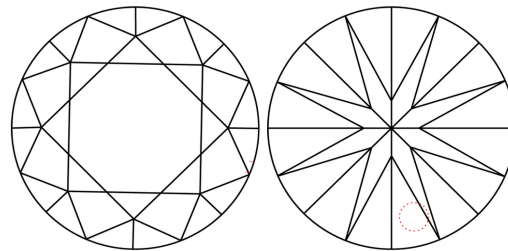
Fluorescence NONE

Inscription(s) LABGROWN IGI LG455006797

Comments: This Chemical Vapor Deposition (CVD) laboratory grown diamond is classified as Type IIa.



CLARITY CHARACTERISTICS



LABGROWN IGI LG455006797

LASERSCRIBESM

KEY TO SYMBOLS

Red symbols indicate internal characteristics.
Green symbols indicate external characteristics.

ADDITIONAL GRADING INFORMATION

Polish EXCELLENT

Symmetry EXCELLENT

Fluorescence NONE

Inscription(s) LABGROWN IGI LG455006797

Comments: This Chemical Vapor Deposition (CVD) laboratory grown diamond is classified as Type IIa.



IGI

01/07/2021
 IGI Report No. LG455006797
 ROUND BRILLIANT
 8.42 - 8.45 x 5.25 mm
 Carat Weight 2.29 CARATS
 Color Grade G
 Clarity Grade VS 1
 Depth 62.3%
 Table 57.5%
 Girdle
 Medium To Slightly Thick (Faceted)
 Pointed
 EXCELLENT
 EXCELLENT
 NONE
 NONE
 LABGROWN IGI LG455006797
 Comments: This Chemical Vapor Deposition (CVD) laboratory grown diamond is classified as Type IIa.