



**INTERNATIONAL  
GEMOLOGICAL  
INSTITUTE**

**ELECTRONIC COPY**

**LABORATORY GROWN DIAMOND REPORT**

**LG451070502**

**IGI LABORATORY GROWN  
DIAMOND ID REPORT**

12/22/2020

IGI Report Number **LG451070502**

**PRINCESS CUT**

**4.49 x 4.48 x 3.26 MM**

Carat Weight 0.57 CARAT

Color Grade J

Clarity Grade VS 1

Polish EXCELLENT

Symmetry EXCELLENT

Fluorescence NONE

Inscription(s) LABGROWN IGI  
LG451070502

Comments: This Chemical  
Vapor Deposition (CVD)  
laboratory grown diamond is  
classified as Type IIa

**IGI GEMOLOGICAL REPORT**

**IGI LABORATORY GROWN DIAMOND IDENTIFICATION REPORT**

12/22/2020

IGI Report Number LG451070502

Shape and Cutting Style PRINCESS CUT

Measurements 4.49 x 4.48 x 3.26 MM

**GRADING RESULTS**

Carat Weight 0.57 CARAT

Color Grade J

Clarity Grade VS 1

**ADDITIONAL GRADING INFORMATION**

Polish EXCELLENT

Symmetry EXCELLENT

Fluorescence NONE

Inscription(s) LABGROWN IGI LG451070502

Comments: This Chemical Vapor Deposition (CVD) laboratory grown  
diamond is classified as Type IIa



This Laboratory Grown Diamond (LGD) described in this Report has been analyzed, graded and Laserscribed® by International Gemological Institute (IGI). A LGD has essentially the chemical, physical and optical properties as a mined diamond, with the exception of being man-made (a manufactured product). LGD's are typically produced by CVD (chemical vapor deposition) or by HPHT (high pressure high temperature) growth processes and may include post growth modifications to change the color. IGI utilizes the most advanced techniques and equipment currently available including, binocular microscopes, diamond color masters, non-contact-optical measuring device, a wide range analytical techniques including FTIR, UV-VIS-NIR, raman spectroscopy, and fluorescence analysis at various excitation wavelengths. This Report includes advanced security features. This Report is neither a guarantee, valuation nor appraisal and by making the report IGI does not agree to purchase or replace the article.

INTERNATIONAL GEMOLOGICAL INSTITUTE, INC

**ADDITIONAL INFORMATION**

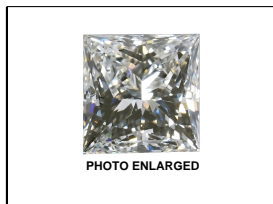
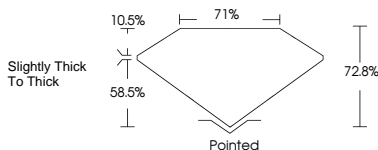


PHOTO ENLARGED



**LASERSCRIBE SM**



**IGI LABORATORY GROWN  
DIAMOND ID REPORT**

12/22/2020

IGI Report Number **LG451070502**

**PRINCESS CUT**

**4.49 x 4.48 x 3.26 MM**

Carat Weight 0.57 CARAT

Color Grade J

Clarity Grade VS 1

Polish EXCELLENT

Symmetry EXCELLENT

Fluorescence NONE

Inscription(s) LABGROWN IGI  
LG451070502

Comments: This Chemical  
Vapor Deposition (CVD)  
laboratory grown diamond is  
classified as Type IIa

For Terms & Conditions, please visit [www.igi.org](http://www.igi.org)



THE DOCUMENT WAS PRODUCED WITH THE FOLLOWING SECURITY MEASURES: SPECIAL DOCUMENT PAPER, INK SCREENS, WATERMARK BACKGROUND DESIGNS HOLOGRAM AND OTHER SECURITY FEATURES NOT LISTED AND DO EXCEED DOCUMENT SECURITY INDUSTRY GUIDELINES