



ELECTRONIC COPY

LG436077803

IGI GEMOLOGICAL REPORT

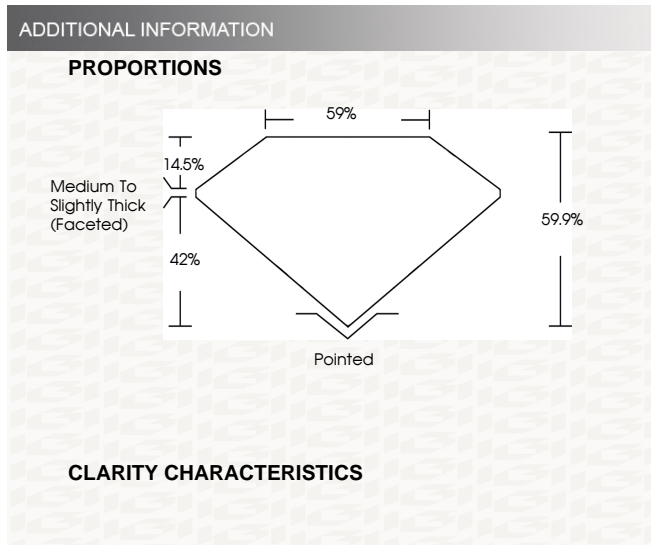
IGI LABORATORY GROWN DIAMOND GRADING REPORT

09/06/2020
IGI Report Number LG436077803
Shape and Cutting Style OVAL BRILLIANT
Measurements 9.14 X 6.74 X 4.04 MM

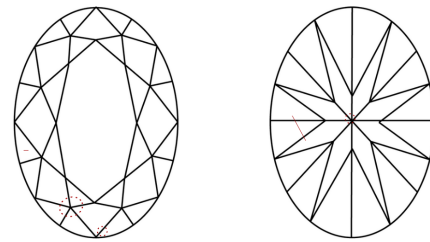
GRADING RESULTS
Carat Weight 1.55 CARAT
Color Grade G
Clarity Grade SI 1

ADDITIONAL GRADING INFORMATION
Polish EXCELLENT
Symmetry EXCELLENT
Fluorescence NONE
Inscription(s) LABGROWN IGI LG436077803

Comments: This Chemical Vapor Deposition (CVD) laboratory grown diamond is classified as Type IIa



CLARITY CHARACTERISTICS



KEY TO SYMBOLS
Red symbols indicate internal characteristics.
Green symbols indicate external characteristics.

This Report is subject to the terms and conditions
© IGI 2000, edition 2019 all rights reserved.

GRADING SCALES

Table with 5 columns: CL (Colorless D-F), NC (Near Colorless G-J), FT (Faint K-M), VLT (Very Light N-R), LT (Light S-Z). Second row: FL (Flawless Internally Flawless), VVS (Very Very Slightly Included), VS (Very Slightly Included), SI (Slightly Included), I (Included).

The laboratory grown diamond described in this Report (Report) has been graded, tested, analyzed, examined and/or inscribed by International Gemological Institute (IGI). A laboratory grown diamond is one that has essentially the same chemical, physical and optical properties as a mined diamond, with the exception of being grown by man (a manufactured product). IGI employs and utilizes those techniques and equipment currently available to IGI, including, without limitation, 10X magnification, corrected triplet loupe, binocular microscope, master color comparison stones, non-contact-optical measuring device, Diamond Sure™, Diamond View™, Spectrophotometer and such other instruments and/or processes as deemed appropriate by IGI. This Report includes advanced security features. A duly accredited gemologist or jeweler can advise you with respect to the importance of and interrelationship between cut, color, clarity and carat weight. THIS REPORT IS NEITHER A GUARANTEE, VALUATION, NOR APPRAISAL OF THE GEMSTONE DESCRIBED HEREIN. PLEASE REVIEW THE LIMITATIONS AND RESTRICTIONS SET FORTH ONLINE. FOR ADDITIONAL INFORMATION, IMPORTANT LIMITATIONS AND DISCLAIMERS, PLEASE GO TO WWW.IGI.ORG OR CALL 1-888-BUY-IGI.



LASERSCRIBE SM

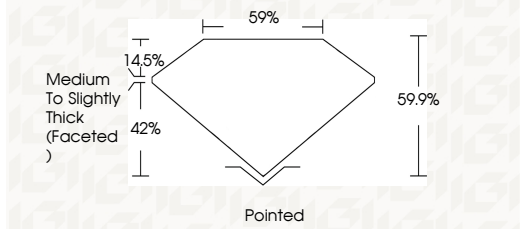


THE DOCUMENT WAS PRODUCED WITH THE FOLLOWING SECURITY MEASURES: SPECIAL DOCUMENT PAPER, INK SCREENS, WATERMARK BACKGROUND, DESIGNS HOLOGRAM AND OTHER SECURITY FEATURES NOT LISTED AND DO EXCEED DOCUMENT SECURITY INDUSTRY GUIDELINES

IGI LABORATORY GROWN DIAMOND GRADING REPORT

09/06/2020
IGI Report Number LG436077803
Shape and Cutting Style OVAL BRILLIANT
Measurements 9.14 X 6.74 X 4.04 MM

GRADING RESULTS
Carat Weight 1.55 CARAT
Color Grade G
Clarity Grade SI 1



ADDITIONAL GRADING INFORMATION
Polish EXCELLENT
Symmetry EXCELLENT
Fluorescence NONE
Inscription(s) LABGROWN IGI LG436077803

Comments: This Chemical Vapor Deposition (CVD) laboratory grown diamond is classified as Type IIa



09/06/2020
IGI Report No LG436077803
OVAL BRILLIANT
9.14 X 6.74 X 4.04 MM
Carat Weight 1.55 CARAT
Color Grade G
Clarity Grade SI 1
Depth 59.9%
Table 59%
Girdle Medium To Slightly Thick
Culet Faceted
Polish EXCELLENT
Symmetry EXCELLENT
Fluorescence NONE
Inscription(s) LABGROWN IGI LG436077803
Comments: This Chemical Vapor Deposition (CVD) laboratory grown diamond is classified as Type IIa