



IGI GEMOLOGICAL REPORT

IGI LABORATORY GROWN DIAMOND GRADING REPORT

07/12/2020 IGI Report Number LG425050687

Shape and Cutting Style CUSHION MODIFIED BRILLIANT

Measurements 7.25 X 7.17 X 5.00 MM

GRADING RESULTS

Carat Weight 2.04 CARATS

Color Grade G

Clarity Grade SI 1

ADDITIONAL GRADING INFORMATION

Polish EXCELLENT

Symmetry EXCELLENT

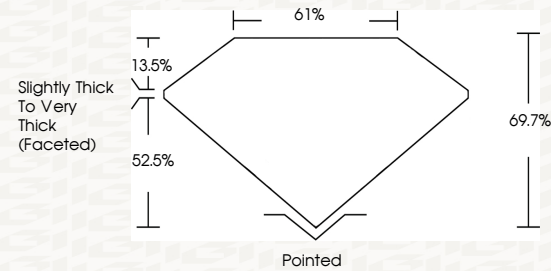
Fluorescence NONE

Inscription(s) LABGROWN IGI LG425050687

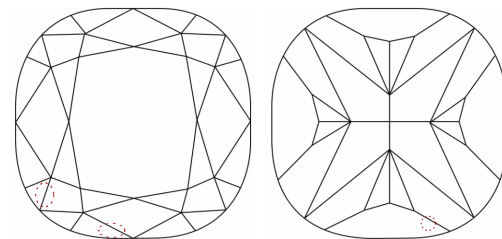
Comments: This Chemical Vapor Deposition (CVD) laboratory grown diamond is classified as Type IIa

ADDITIONAL INFORMATION

PROPORTIONS



CLARITY CHARACTERISTICS



KEY TO SYMBOLS

Red symbols indicate internal characteristics. Green symbols indicate external characteristics.

This Report is subject to the terms and conditions

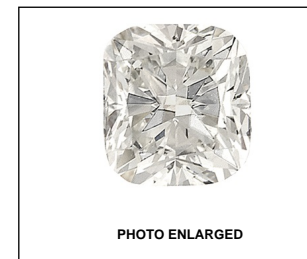
© IGI 2000, edition 2019 all rights reserved.

GRADING SCALES

Table with 5 columns for Color Grading Scale (CL, NC, FT, VLT, LT) and Clarity (10x) Grading Scale (FL, IF, VVS, VS, SI, I) with corresponding descriptions.

The laboratory grown diamond described in this Report (Report) has been graded, tested, analyzed, examined and/or inscribed by International Gemological Institute (IGI). A laboratory grown diamond is one that has essentially the same chemical, physical and optical properties as a mined diamond...

© INTERNATIONAL GEMOLOGICAL INSTITUTE, INC.



LASERSCRIBE SM



IGI LABORATORY GROWN DIAMOND GRADING REPORT

07/12/2020 IGI Report Number LG425050687

Shape and Cutting Style CUSHION MODIFIED BRILLIANT

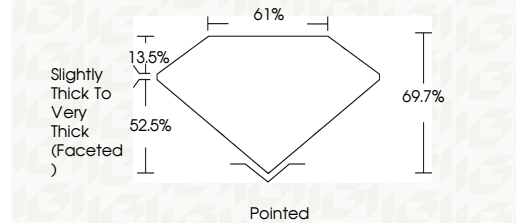
Measurements 7.25 X 7.17 X 5.00 MM

GRADING RESULTS

Carat Weight 2.04 CARATS

Color Grade G

Clarity Grade SI 1



ADDITIONAL GRADING INFORMATION

Polish EXCELLENT

Symmetry EXCELLENT

Fluorescence NONE

Inscription(s) LABGROWN IGI LG425050687

Comments: This Chemical Vapor Deposition (CVD) laboratory grown diamond is classified as Type IIa



Summary of report details including Report No., Measurements, Carat Weight, Color Grade, Clarity Grade, Polish, Symmetry, Fluorescence, and Inscription(s).