



**LG414001713**

05/07/2020

IGI Report Number **LG414001713**

**SQUARE CUSHION MODIFIED  
BRILLIANT**

**5.43 x 5.33 x 3.55 MM**

Carat Weight 0.91 CARAT

Color Grade F

Clarity Grade VS 1

Polish VERY GOOD

Symmetry EXCELLENT

Fluorescence NONE

Inscription(s) LABGROWN IGI  
LG414001713

Comments: This Chemical  
Vapor Deposition (CVD)  
laboratory grown diamond is  
classified as Type IIa

**IGI GEMOLOGICAL REPORT**

**IGI LABORATORY GROWN DIAMOND IDENTIFICATION REPORT**

05/07/2020

IGI Report Number LG414001713

Shape and Cutting Style SQUARE CUSHION MODIFIED BRILLIANT

Measurements 5.43 x 5.33 x 3.55 MM

**GRADING RESULTS**

Carat Weight 0.91 CARAT

Color Grade F

Clarity Grade VS 1

**ADDITIONAL GRADING INFORMATION**

Polish VERY GOOD

Symmetry EXCELLENT

Fluorescence NONE

Inscription(s) LABGROWN IGI LG414001713

Comments: This Chemical Vapor Deposition (CVD) laboratory grown  
diamond is classified as Type IIa



This Laboratory Grown Diamond (LGD) described in this Report has been analyzed, graded and Laserscribed® by International Gemological Institute (IGI). A LGD has essentially the chemical, physical and optical properties as a mined diamond, with the exception of being man-made (a manufactured product). LGD's are typically produced by CVD (chemical vapor deposition) or by HPHT (high pressure high temperature) growth processes and may include post growth modifications to change the color. IGI utilizes the most advanced techniques and equipment currently available including, binocular microscopes, diamond color masters, non-contact optical measuring device, a wide range analytical techniques including FTIR, UV-VIS-NIR, raman spectroscopy, and fluorescence analysis at various excitation wavelengths. This Report includes advanced security features. This Report is neither a guarantee, valuation nor appraisal and by making the report IGI does not agree to purchase or replace the article.

**INTERNATIONAL GEMOLOGICAL INSTITUTE, INC**

**ADDITIONAL INFORMATION**

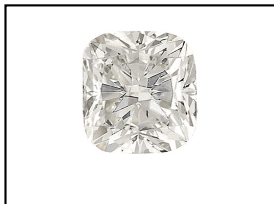
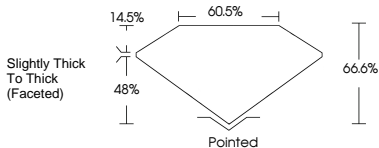


PHOTO ENLARGED



**LASERSCRIBE SM**



Slightly Thick  
To Thick  
(Faceted)



THE DOCUMENT WAS PRODUCED THE FOLLOWING SECURITY MEASURES: SPECIAL DOCUMENT PAPER, INK SCREENS, WATERMARK, BACKGROUND DESIGNS, HOLOGRAM AND OTHER SECURITY FEATURES NOT LISTED AND DO EXCEED DOCUMENT SECURITY INDUSTRY DUDLINES

**IGI LABORATORY GROWN  
DIAMOND ID REPORT**

05/07/2020

IGI Report Number **LG414001713**

**SQUARE CUSHION MODIFIED  
BRILLIANT**

**5.43 x 5.33 x 3.55 MM**

Carat Weight 0.91 CARAT

Color Grade F

Clarity Grade VS 1

Polish VERY GOOD

Symmetry EXCELLENT

Fluorescence NONE

Inscription(s) LABGROWN IGI  
LG414001713

Comments: This Chemical  
Vapor Deposition (CVD)  
laboratory grown diamond is  
classified as Type IIa