



IGI GEMOLOGICAL REPORT

IGI LABORATORY GROWN DIAMOND GRADING REPORT

04/29/2020

IGI Report Number LG414000691

Shape and Cutting Style PRINCESS CUT

Measurements 6.97 X 6.87 X 4.70 MM

GRADING RESULTS

Carat Weight 2.01 CARATS

Color Grade G

Clarity Grade SI 1

ADDITIONAL GRADING INFORMATION

Polish VERY GOOD

Symmetry EXCELLENT

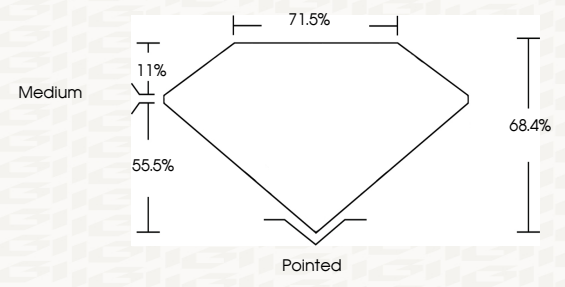
Fluorescence NONE

Inscription(s) LABGROWN IGI LG414000691

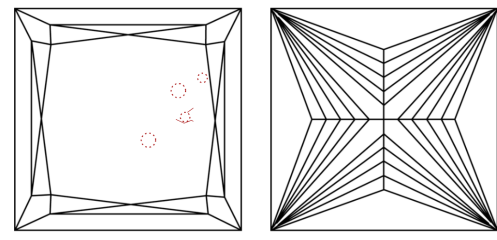
Comments: This Chemical Vapor Deposition (CVD) laboratory grown diamond is classified as Type IIa

ADDITIONAL INFORMATION

PROPORTIONS



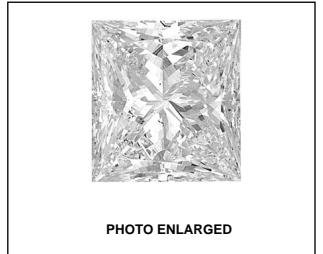
CLARITY CHARACTERISTICS



GRADING SCALES

Table with 5 columns for Color Grading Scale (CL, NC, FT, VLT, LT) and Clarity (10x) Grading Scale (FL, IF, VVS, VS, SI, I).

The laboratory grown diamond described in this Report (Report) has been graded, tested, analyzed, examined and/or inscribed by International Gemological Institute (IGI). A laboratory grown diamond is one that has essentially the same chemical, physical and optical properties as a mined diamond...



LASERSCRIBE SM



IGI LABORATORY GROWN DIAMOND GRADING REPORT

04/29/2020

IGI Report Number LG414000691

Shape and Cutting Style PRINCESS CUT

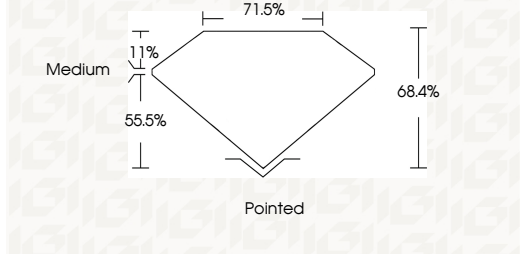
Measurements 6.97 X 6.87 X 4.70 MM

GRADING RESULTS

Carat Weight 2.01 CARATS

Color Grade G

Clarity Grade SI 1



ADDITIONAL GRADING INFORMATION

Polish VERY GOOD

Symmetry EXCELLENT

Fluorescence NONE

Inscription(s) LABGROWN IGI LG414000691

Comments: This Chemical Vapor Deposition (CVD) laboratory grown diamond is classified as Type IIa



KEY TO SYMBOLS
Red symbols indicate internal characteristics.
Green symbols indicate external characteristics.

This Report is subject to the terms and conditions
© IGI 2000, edition 2019 all rights reserved.

Summary of report details including date, report number, measurements, grading results, and additional information.