



**IGI GEMOLOGICAL REPORT**

**IGI LABORATORY GROWN DIAMOND GRADING REPORT**

02/10/2020

IGI Report Number **LG407918944**

Shape and Cutting Style **PRINCESS CUT**

Measurements **6.39 X 6.27 X 4.31 MM**

**GRADING RESULTS**

Carat Weight **1.50 CARAT**

Color Grade **E**

Clarity Grade **SI 1**

**ADDITIONAL GRADING INFORMATION**

Polish **EXCELLENT**

Symmetry **EXCELLENT**

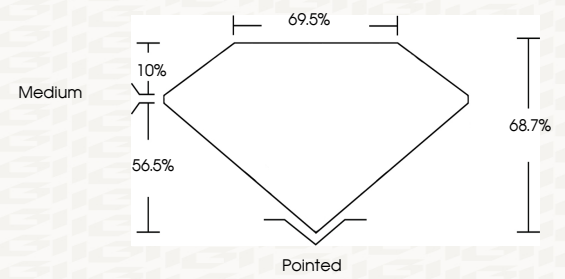
Fluorescence **NONE**

Inscription(s) **LABGROWN IGI LG407918944**

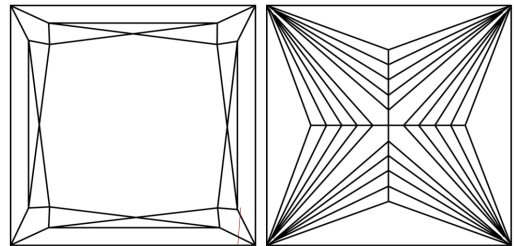
Comments: This Chemical Vapor Deposition (CVD) laboratory grown diamond is classified as Type IIa

**ADDITIONAL INFORMATION**

**PROPORTIONS**



**CLARITY CHARACTERISTICS**



**KEY TO SYMBOLS**

Red symbols indicate internal characteristics.  
Green symbols indicate external characteristics.



This Report is subject to the terms and conditions

© IGI 2000, edition 2019 all rights reserved.

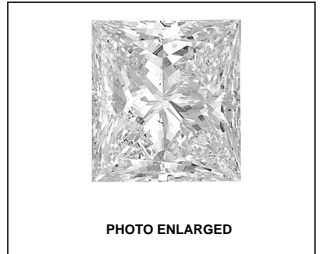
**GRADING SCALES**

COLOR GRADING SCALE	CL	NC	FT	VL	LT	
	COLORLESS D-F	NEAR COLORLESS G-J	FAINT K-M	VERY LIGHT N-R	LIGHT S-Z	
CLARITY (10X) GRADING SCALE	FL	IF	VVS	VS	SI	I
	FLAWLESS INTERNALLY FLAWLESS	VERY VERY SLIGHTLY INCLUDED	VERY SLIGHTLY INCLUDED	SLIGHTLY INCLUDED	INCLUDED	

The laboratory grown diamond described in this Report (Report) has been graded, tested, analyzed, examined and/or inscribed by International Gemological Institute (IGI). A laboratory grown diamond is one that has essentially the same chemical, physical and optical properties as a mined diamond, with the exception of being grown by man (a manufactured product). IGI employs and utilizes those techniques and equipment currently available to IGI, including, without limitation, 10X magnification, corrected triplet loupe, binocular microscope, master color comparison stones, non-contact-optical measuring device, Diamond Sure™, Diamond View™, Spectrophotometer and such other instruments and/or processes as deemed appropriate by IGI. This Report includes advanced security features. A duly accredited gemologist or jeweler can advise you with respect to the importance of and interrelationship between cut, color, clarity and carat weight.

**THIS REPORT IS NEITHER A GUARANTEE, VALUATION, NOR APPRAISAL OF THE GEMSTONE DESCRIBED HEREIN. PLEASE REVIEW THE LIMITATIONS AND RESTRICTIONS SET FORTH ONLINE. FOR ADDITIONAL INFORMATION, IMPORTANT LIMITATIONS AND DISCLAIMERS, PLEASE GO TO WWW.IGI.ORG OR CALL 1-888-BUY-IGIS.**

© INTERNATIONAL GEMOLOGICAL INSTITUTE, INC.



LASERSCRIBE SM



**IGI LABORATORY GROWN DIAMOND GRADING REPORT**

02/10/2020

IGI Report Number **LG407918944**

Shape and Cutting Style **PRINCESS CUT**

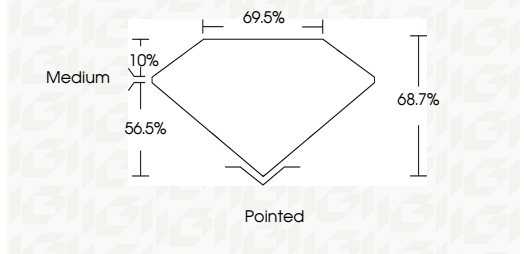
Measurements **6.39 X 6.27 X 4.31 MM**

**GRADING RESULTS**

Carat Weight **1.50 CARAT**

Color Grade **E**

Clarity Grade **SI 1**



**ADDITIONAL GRADING INFORMATION**

Polish **EXCELLENT**

Symmetry **EXCELLENT**

Fluorescence **NONE**

Inscription(s) **LABGROWN IGI LG407918944**

Comments: This Chemical Vapor Deposition (CVD) laboratory grown diamond is classified as Type IIa



**IGI**

02/10/2020	IGI Report No. LG407918944	SI 1
PRINCESS CUT	6.39 X 6.27 X 4.31 MM	68.7%
Carat Weight	1.50 CARAT	69.5%
Color Grade	E	Medium
Clarity Grade	SI 1	Pointed
Depth	68.7%	EXCELLENT
Table	10%	EXCELLENT
Girdle	Medium	NONE
Culet	Pointed	LABGROWN IGI LG407918944
Polish	EXCELLENT	Comments:
Symmetry	EXCELLENT	This Chemical Vapor
Fluorescence	NONE	Deposition (CVD) laboratory
Inscription(s)	LABGROWN IGI LG407918944	grown diamond is classified
		as Type IIa