



**INTERNATIONAL
GEMOLOGICAL
INSTITUTE**

ELECTRONIC COPY

IGI GEMOLOGICAL REPORT

IGI LABORATORY GROWN DIAMOND GRADING REPORT

Report Date **January 2, 2020**
 IGI Report Number **LG400938173**
 Shape and Cutting Style **ROUND BRILLIANT**
 Measurements **4.56 - 4.58 X 2.84 MM**

GRADING RESULTS

Carat Weight **0.36 Carat**
 Color Grade **F**
 Clarity Grade **VVS 2**
 Cut Grade **EXCELLENT**

ADDITIONAL GRADING INFORMATION

Polish **EXCELLENT**
 Symmetry **VERY GOOD**
 Fluorescence **NONE**
 Inscription(s) **LABGROWN IGI LG400938173**

Comments: **This Chemical Vapor Deposition (CVD) laboratory grown diamond is classified as Type IIa**



The Laboratory Grown Diamond (LGD) described in this Report has been analyzed, graded, and LaserScribed® by International Gemological Institute (IGI). A LGD has essentially the same chemical, physical and optical properties as a mined diamond, with the exception of being man-made (a manufactured product). LGDs are typically produced by CVD (chemical vapor deposition) or by HPHT (high pressure high temperature) growth processes and may include post-growth modifications to change the color. IGI utilizes the most advanced techniques and equipment currently available including binocular microscopes, diamond color masters, non-contact-optical measuring devices, a wide range of analytical techniques including FTIR, UV-VIS-NIR, Raman spectroscopy, and fluorescence analysis at various excitation wavelengths. This Report includes advanced security features. This Report is neither a guarantee, valuation nor appraisal and by making this report IGI does not agree to purchase or replace the article.

© INTERNATIONAL GEMOLOGICAL INSTITUTE, INC.

For Terms & Conditions, please visit www.igi.org

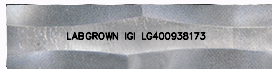
LABORATORY GROWN DIAMOND REPORT

LG400938173

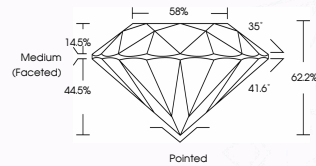
ADDITIONAL INFORMATION



PHOTO ENLARGED



LASERSCRIBE™



**IGI LABORATORY GROWN
DIAMOND ID REPORT**

IGI Report Number **LG400938173**
 Report Date **January 2, 2020**
 Shape **ROUND BRILLIANT**

Carat Weight **0.36 Carat**
 Color Grade **F**
 Clarity Grade **VVS 2**
 Cut Grade **EXCELLENT**
 Polish **EXCELLENT**
 Symmetry **VERY GOOD**
 Fluorescence **NONE**
 Inscription(s) **LABGROWN IGI
LG400938173**

Comments: **This Chemical Vapor Deposition (CVD) laboratory grown diamond is classified as Type IIa**

**IGI LABORATORY GROWN
DIAMOND ID REPORT**

IGI Report Number **LG400938173**
 Report Date **January 2, 2020**
 Shape **ROUND BRILLIANT**

Carat Weight **0.36 Carat**
 Color Grade **F**
 Clarity Grade **VVS 2**
 Cut Grade **EXCELLENT**
 Polish **EXCELLENT**
 Symmetry **VERY GOOD**
 Fluorescence **NONE**
 Inscription(s) **LABGROWN IGI
LG400938173**

Comments: **This Chemical Vapor Deposition (CVD) laboratory grown diamond is classified as Type IIa**



THIS DOCUMENT WAS PRODUCED WITH THE FOLLOWING SECURITY MEASURES: SPECIAL DOCUMENT PAPER, INK SCREENS, WATERMARK BACKGROUND DESIGNS, HOLOGRAM AND OTHER SECURITY FEATURES NOT LISTED AND DO EXCEED DOCUMENT SECURITY INDUSTRY GUIDELINES.