

IGI IDENTIFICATION REPORT

LG395982553

Report verification at [igionline.com](https://www.igionline.com)

IGI GEMOLOGICAL REPORT

IGI LABORATORY GROWN DIAMOND GRADING REPORT

11/25/2019

IGI Report Number
LG395982553

Shape and Cutting Style
ROUND BRILLIANT

Measurements
7.63 - 7.67 X 4.69 MM

GRADING RESULTS

Carat Weight
1.67 CARAT

Color Grade
E

Clarity Grade
VS 1

Cut Grade
IDEAL

ADDITIONAL GRADING INFORMATION

Polish
EXCELLENT

Symmetry
EXCELLENT

Fluorescence
NONE

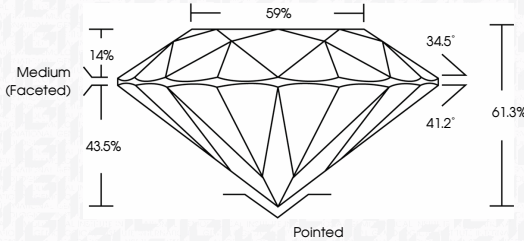
Inscription(s)
LABGROWN IGI LG395982553

Comments: This Chemical Vapor Deposition (CVD) laboratory grown diamond is classified as Type IIa. Hearts and Arrows pattern viewable with H&A scope.

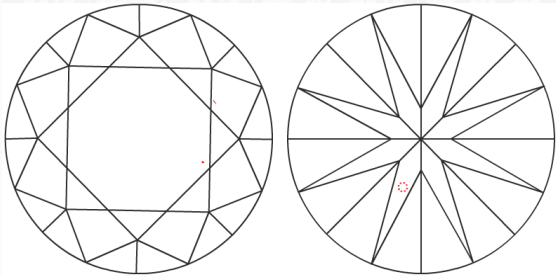


ADDITIONAL INFORMATION

PROPORTIONS



CLARITY CHARACTERISTICS



KEY TO SYMBOLS

Red symbols indicate internal characteristics.
Green symbols indicate external characteristics.

SCIENTIFIC LABORATORY FOR THE IDENTIFICATION AND GRADING
OF DIAMONDS AND COLORED STONES
EDUCATIONAL PROGRAMS

GRADING SCALES

COLOR GRADING SCALE	CL COLORLESS D - F	NC NEAR COLORLESS G - J	FT FAINT K - M	VLT VERY LIGHT N - R	LT LIGHT S - Z	
CLARITY (10x) GRADING SCALE	FL FLAWLESS INTERNALLY FLAWLESS	IF FLAWLESS INTERNALLY FLAWLESS	VVS VERY VERY SLIGHTLY INCLUDED	VS VERY SLIGHTLY INCLUDED	SI SLIGHTLY INCLUDED	I INCLUDED

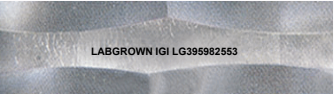
The laboratory grown diamond described in this Report ("Report") has been graded, tested, analyzed, examined and/or inscribed by International Gemological Institute ("IGI"). A laboratory grown diamond is one that has essentially the same chemical, physical and optical properties as a mined diamond, with the exception of being grown by man (a manufactured product). IGI employs and utilizes those techniques and equipment currently available to IGI, including, without limitation, 10X magnification, corrected triplet loupe, binocular microscope, master color comparison stones, non-contact-optical measuring device, Diamond Sure™, Diamond View™, Spectrophotometer and such other instruments and/or processes as deemed appropriate by IGI. This Report includes advanced security features. A duly accredited gemologist or jeweler can advise you with respect to the importance of and interrelationship between cut, color, clarity and carat weight.

THIS REPORT IS NEITHER A GUARANTEE, VALUATION, NOR APPRAISAL OF THE GEMSTONE DESCRIBED HEREIN. PLEASE REVIEW THE LIMITATIONS AND RESTRICTIONS SET FORTH ONLINE. FOR ADDITIONAL INFORMATION, IMPORTANT LIMITATIONS AND DISCLAIMERS, PLEASE GO TO [WWW.IGI.ORG](https://www.igi.org) OR CALL 1-888-BUY-IGIS.

© INTERNATIONAL GEMOLOGICAL INSTITUTE, INC.



PHOTO ENLARGED



LASERSCRIBE SM

The gemstone described in this Identification Report ("Report") has been identified, authenticated, graded, tested, analyzed, examined and/or inscribed by International Gemological Institute ("IGI"). IGI employs and utilizes those techniques and equipment currently available to IGI, including, without limitation, 10X magnification, corrected triplet loupe, stereo zoom binocular microscope, refractometer, spectrometer, polariscope, non-contact optical measuring device, and such other instruments and/or processes as deemed appropriate by IGI. This Report includes advanced security features. A duly accredited gemologist or jeweler can advise you with respect to the importance of and interrelationship between cut, color, clarity and carat weight.

THIS REPORT IS NEITHER A GUARANTEE, VALUATION, NOR APPRAISAL OF THE GEMSTONE DESCRIBED HEREIN. PLEASE REVIEW THE LIMITATIONS AND RESTRICTIONS SET FORTH ONLINE. FOR ADDITIONAL INFORMATION, IMPORTANT LIMITATIONS AND DISCLAIMERS, PLEASE GO TO [WWW.IGIONLINE.COM](https://www.igionline.com) OR CALL 1-888-BUY-IGIS.

©2016 IGI



igireport