

**IGI LABORATORY GROWN DIAMOND GRADING REPORT**

10/27/2019

IGI Report Number **LG389924475**Shape and Cutting Style **PRINCESS CUT**

Measurements **6.34 X 6.26 X 4.49 MM**

## GRADING RESULTS

**Carat Weight** 1.51 CARAT

Color Grade G

Clarity Grade SI 1

### ADDITIONAL GRADING INFORMATION

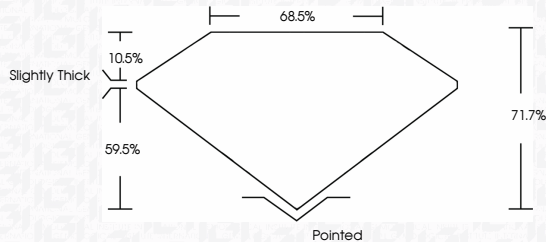
Polish VERY GOODSymmetry **EXCELLENT**Fluorescence **NONE**

Inscription(s) **LABGROWN IGI LG389924475**

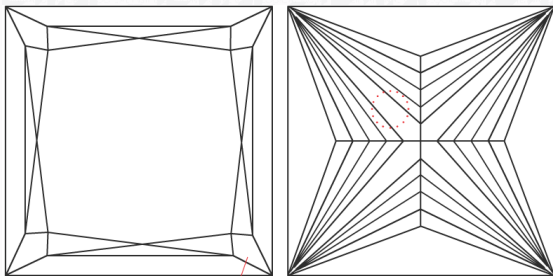
Comments: This Chemical Vapor Deposition (CVD) laboratory grown diamond is classified as Type IIa



## PROPORTIONS



## CLARITY CHARACTERISTICS



## KEY TO SYMBOLS

Red symbols indicate internal characteristics.  
Green symbols indicate external characteristics.

SCIENTIFIC LABORATORY FOR THE IDENTIFICATION AND GRADING  
OF DIAMONDS AND COLORED STONES  
EDUCATIONAL PROGRAMS

## GRADING SCALES

COLOR GRADING SCALE	CL D - F	NC NEAR COLORLESS G - J	FT FAINT K - M	VLT VERY LIGHT N - R	LT LIGHT S - Z
CLARITY (In) GRADING SCALE	FL FLAWLESS IF INTERNALLY FLAWLESS	VVS VERY VERY SLIGHTLY INCLUDED	VS VERY SLIGHTLY INCLUDED	SI SLIGHTLY INCLUDED	I INCLUDED

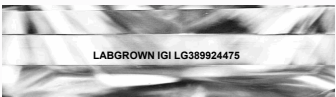
The laboratory grown diamond described in this Report (Report) has been graded, tested, analyzed, examined and/or inscribed by International Gemological Institute (I.G.I.). A laboratory grown diamond is one that has essentially the same chemical, physical and optical properties as a mined diamond, with the exception of being grown by man (a manufactured product). I.G.I. employs and utilizes those techniques and equipment currently available to I.G.I. including, without limitation, 10X magnification, corrected triplet loupe, binocular microscope, master color comparison stones, non-contact-optical measuring device, Diamond View™, diamond growth view polariscope and other instruments and/or processes as deemed appropriate by I.G.I. This Report includes advanced security features. A duly accredited gemologist or jeweler can advise you with respect to the importance of and interrelationship between cut, color, clarity and carat weight.

THIS REPORT IS NEITHER A GUARANTEE, VALUATION, NOR APPRAISAL OF THE GEMSTONE DESCRIBED HEREIN. PLEASE REVIEW THE LIMITATIONS AND RESTRICTIONS SET FORTH ONLINE. FOR ADDITIONAL INFORMATION, IMPORTANT LIMITATIONS AND DISCLAIMERS, PLEASE GO TO WWW.IGI.ORG OR CALL 1-888-BUY-IGIS.

© INTERNATIONAL GEMOLOGICAL INSTITUTE, INC.



PHOTO ENLARGED

LASERSCRIBE <sup>SM</sup>

The gemstone described in this Identification Report ("Report") has been identified, authenticated, graded, tested, analyzed, examined and/or inscribed by International Gemological Institute ("IGI"). IGI employs and utilizes those techniques and equipment that are standard in the gemstone trade, including but not limited to: 10x loupe, stereo zoom binocular microscope, refractometer, spectrometer, polariscope, non-contact optical measuring device, and such other instruments and/or processes as deemed appropriate by IGI. This Report includes advanced security features. A duly qualified gemologist has examined the gemstone and has determined the importance of an interrelationship between cut, color, clarity and carat weight.

**THIS REPORT IS NEITHER A GUARANTEE, VALUATION, NOR APPRAISAL OF THE GEMSTONE DESCRIBED HEREIN. PLEASE REVIEW THE LIMITATIONS AND RESTRICTIONS SET FORTH ONLINE AT [WWW.IGI.ONLINE.COM](http://WWW.IGI.ONLINE.COM) OR CALL 1-888-BUY-IGI.**

[illegible]

THIS DOCUMENT WAS PRODUCED WITH THE FOLLOWING SECURITY MEASURES: SPECIAL DOCUMENT PAPER, INK SCREENS, WATERMARK, BACKGROUND DESIGNS, HOLOGRAM AND OTHER SECURITY FEATURES NOT LISTED AND DO EXCEED DOCUMENT SECURITY INDUSTRY GUIDELINES.