



LABORATORY GROWN DIAMOND REPORT

NUMBER **LG_171554972**

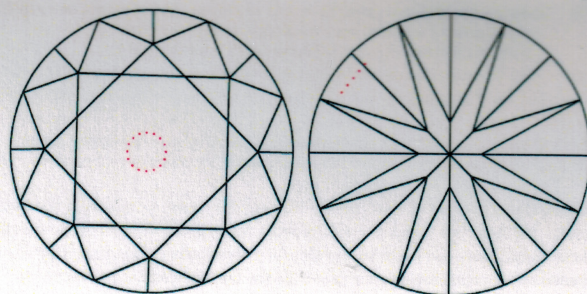
DUBAI, August 24, 2015

Red symbols denote internal characteristics (inclusions). Green or black symbols denote external characteristics (blemishes). Diagram is an approximate representation of this stone, and symbols shown indicate type, position, and approximate size of clarity characteristics. All clarity characteristics may not be shown. Details of finish are not shown.

DESCRIPTION **LABORATORY GROWN DIAMOND**
SHAPE AND CUT **ROUND BRILLIANT**

CARAT WEIGHT **1.08 CARAT**
COLOR GRADE **H**
CLARITY GRADE **VVS 2**
CUT GRADE **EXCELLENT**

POLISH **EXCELLENT**
SYMMETRY **VERY GOOD**



Measurements **6.67 - 6.69 x 3.98 mm**

Table Size **59.5%**

Crown Height - Angle **13.5% - 34°**

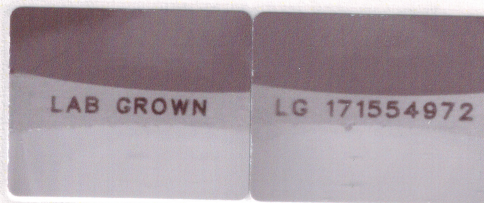
Pavilion Depth - Angle **43% - 40.8°**

Girdle Thickness **MEDIUM**

Culet **POINTED**

Total Depth **59.6%**

FLUORESCENCE **NONE**



COMMENTS **IDEAL CUT ROUND BRILLIANT**
The laboratory grown diamond described above is classified as Type IIa. Laserscribe on Girdle: "LAB GROWN LG 171554972"



COLOR GRADING SCALE	CL		NC		FT		VLT		LT	
	COLORLESS D - F		NEAR COLORLESS G - J		FAINT K - M		VERY LIGHT N - R		LIGHT S - Z	
CLARITY (10X) GRADING SCALE	FL	IF	VVS		VS	SI		I		
	FLAWLESS	FLAWLESS	VERY SLIGHTLY INCLUDED	VERY SLIGHTLY INCLUDED	VERY SLIGHTLY INCLUDED	SLIGHTLY INCLUDED		INCLUDED		

The laboratory grown diamond described in this Report ("Report") has been graded, tested, analyzed, examined and/or inscribed by International Gemological Institute (IGI) A laboratory grown diamond is one that has the same chemical, physical and optical properties as mined diamond, with the exception of being grown by man. IGI employs and utilizes those techniques and equipment currently available to IGI, including, without limitation, 10X magnification, corrected triplet loupe and binocular microscope, master color comparison system, non-contact-optical measuring device, and such other instruments and/or processes as deemed appropriate by IGI. This Report includes advanced security features. A duly accredited gemologist or jeweler can advise you with respect to the importance of and interrelationship between cut, color, clarity and carat weight.
THIS REPORT IS NEITHER A GUARANTEE, VALUATION NOR APPRAISAL OF THE LABORATORY GROWN DIAMOND DESCRIBED HEREIN.