



IGI GEMOLOGICAL REPORT

IGI LABORATORY GROWN DIAMOND GRADING REPORT

11/18/2020
IGI Report Number LG10324902
Shape and Cutting Style PRINCESS CUT
Measurements 7.17 X 7.12 X 4.84 MM

GRADING RESULTS

Carat Weight 2.21 CARATS
Color Grade G
Clarity Grade VVS 2

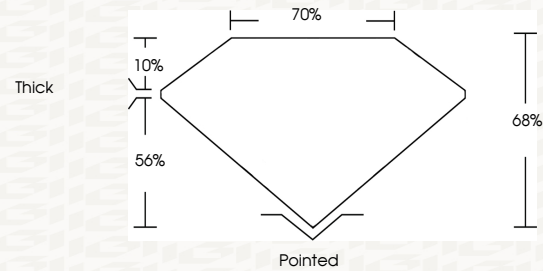
ADDITIONAL GRADING INFORMATION

Polish VERY GOOD
Symmetry VERY GOOD
Fluorescence NONE
Inscription(s) LABORATORY GROWN IGI LG10324902

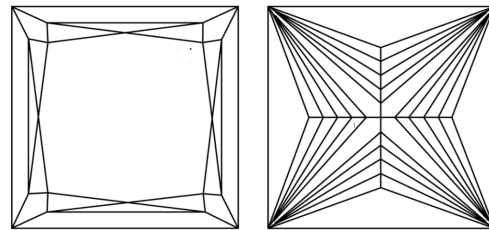
Comments: This Chemical Vapor Deposition (CVD) laboratory grown diamond is classified as Type IIa

ADDITIONAL INFORMATION

PROPORTIONS



CLARITY CHARACTERISTICS



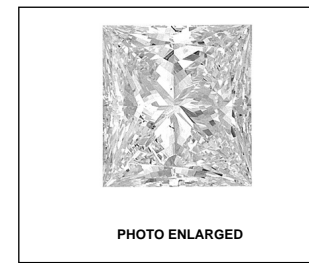
KEY TO SYMBOLS

Red symbols indicate internal characteristics.
Green symbols indicate external characteristics.

GRADING SCALES

Table with 2 rows and 5 columns showing color and clarity grading scales. Color scale: CL (Colorless D-F), NC (Near Colorless G-J), FT (Faint K-M), VLT (Very Light N-R), LT (Light S-Z). Clarity scale: FL (Flawless Internally Flawless), IF (Included Internally Flawless), VVS (Very Very Slightly Included), VS (Very Slightly Included), SI (Slightly Included), I (Included).

The laboratory grown diamond described in this Report ("Report") has been graded, tested, analyzed, examined and/or inscribed by International Gemological Institute (IGI). A laboratory grown diamond is one that has essentially the same chemical, physical and optical properties as a mined diamond, with the exception of being grown by man (a manufactured product). IGI employs and utilizes those techniques and equipment currently available to IGI, including, without limitation, 10X magnification, corrected triplet loupe, binocular microscope, master color comparison stones, non-contact-optical measuring device, Diamond Sure™, Diamond View™, Spectrophotometer and such other instruments and/or processes as deemed appropriate by IGI. This Report includes advanced security features. A duly accredited gemologist or jeweler can advise you with respect to the importance of and interrelationship between cut, color, clarity and carat weight. THIS REPORT IS NEITHER A GUARANTEE, VALUATION, NOR APPRAISAL OF THE GEMSTONE DESCRIBED HEREIN. PLEASE REVIEW THE LIMITATIONS AND RESTRICTIONS SET FORTH ONLINE. FOR ADDITIONAL INFORMATION, IMPORTANT LIMITATIONS AND DISCLAIMERS, PLEASE GO TO WWW.IGI.ORG OR CALL 1-888-BUY-IGIS.



LABORATORY GROWN IGI LG10324902 LASERSCRIBE SM

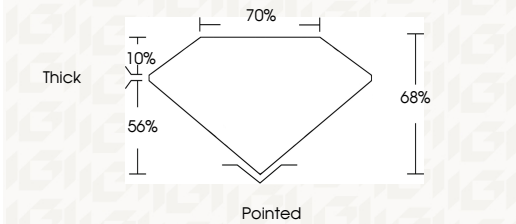


IGI LABORATORY GROWN DIAMOND GRADING REPORT

11/18/2020
IGI Report Number LG10324902
Shape and Cutting Style PRINCESS CUT
Measurements 7.17 X 7.12 X 4.84 MM

GRADING RESULTS

Carat Weight 2.21 CARATS
Color Grade G
Clarity Grade VVS 2



ADDITIONAL GRADING INFORMATION

Polish VERY GOOD
Symmetry VERY GOOD
Fluorescence NONE
Inscription(s) LABORATORY GROWN IGI LG10324902

Comments: This Chemical Vapor Deposition (CVD) laboratory grown diamond is classified as Type IIa





This Report is subject to the terms and conditions

© IGI 2000, edition 2019 all rights reserved.

THE DOCUMENT WAS PRODUCED WITH THE FOLLOWING SECURITY MEASURES: SPECIAL DOCUMENT PAPER, INK SCREENS, WATERMARK, BACKGROUND DESIGNS, HOLOGRAM AND OTHER SECURITY FEATURES NOT LISTED AND DO EXCEED DOCUMENT SECURITY INDUSTRY GUIDELINES

11/18/2020
IGI Report No. IGI10324902
PRINCESS CUT

7.17 X 7.12 X 4.84 MM
2.21 CARATS

Carat Weight
Color Grade
Clarity Grade
Depth
Table
Girdle
Culet
Polish
Symmetry
Fluorescence
Inscription(s)

VVS 2
68%
70%
Thick
Polished
VERY GOOD
VERY GOOD
NONE

LABORATORY GROWN IGI LS10324902

Comments:

This Chemical Vapor
Deposition (CVD) laboratory
grown diamond is classified
as Type IIa