



INTERNATIONAL GEMOLOGICAL INSTITUTE

Expertise issued by I.G.I.

551 Fifth Avenue, New York, NY 10176
Tel: (212) 753-7100 Fax: (212) 758-7759
www.igiworldwide.com

LABORATORY GROWN DIAMOND REPORT

DATE: 10/20/2014

REPORT NUMBER: LG10166415

DESCRIPTION:

LABORATORY GROWN DIAMOND

SHAPE AND CUTTING STYLE:

SQUARE MODIFIED BRILLIANT

MEASUREMENTS:

4.92 x 4.88 x 3.49 MM.

GRADING RESULT:

Carat Weight: 0.72 CT(S)
Color Grade: K
Clarity Grade: VVS 2

PROPORTIONS:

Depth: 71.5%
Table: 73%
Crown Height %: 10.0%
Pavilion Depth %: 58.5%
Girdle: MEDIUM
Culet: NONE

FINISH:

Polish: VERY GOOD
Symmetry: GOOD

FLUORESCENCE:

NONE

COMMENTS: Laserscribe ®: "LAB GROWN LG10166415". The laboratory grown diamond described above is classified as Type IIA.

Red symbols denote internal characteristics (inclusions). Green or black symbols denote external characteristics (blemishes). Diagram in an approximate representation of this stone, and symbols shown indicate type, position, and approximate size of clarity characteristics. All clarity characteristics may not be shown. Details of finish are not shown.

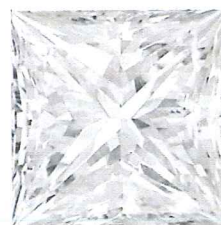
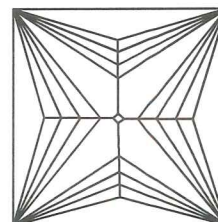
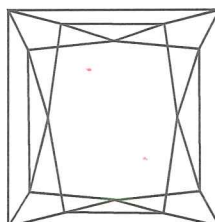


PHOTO ENLARGED

COLOR GRADING SCALE	CL		NC		FT	VLT		LT
	COLORLESS D - F		NEAR COLORLESS G - J		FAINT K - M	VERY LIGHT N - R		LIGHT S - Z
CLARITY (10X) GRADING SCALE	FL	IF	VVS	VS	SI	I		
	FLAWLESS	FLAWLESS	VERY VERY SLIGHTLY INCLUDED	VERY SLIGHTLY INCLUDED	SLIGHTLY INCLUDED	INCLUDED		

The laboratory grown diamond described in this Report ("Report") has been graded, tested, analyzed, examined and/or inscribed by International Gemological Institute (I.G.I.) A laboratory grown diamond is one that has the same chemical, physical and optical properties as mined diamond, with the exception of being grown by man. I.G.I. employs and utilizes those techniques and equipment currently available to I.G.I., including, without limitation, 10X magnification, corrected triplet loupe and binocular microscope, master color comparison system, non-contact optical measuring device, and such other instruments and/or processes as deemed appropriate by I.G.I. This Report includes advanced security features. A duly accredited gemologist or jeweler can advise you with respect to the importance of and interrelationship between cut, color, clarity and carat weight.

THIS REPORT IS NEITHER A GUARANTEE, VALUATION NOR APPRAISAL OF THE LABORATORY GROWN DIAMOND DESCRIBED HEREIN.