



INTERNATIONAL GEMOLOGICAL INSTITUTE

Expertise issued by I.G.I.

551 Fifth Avenue, New York, NY 10176

Tel: (212) 753-7100 Fax: (212) 758-7759

www.igiworldwide.com

LABORATORY GROWN DIAMOND REPORT

DATE: 5/29/2013

REPORT NUMBER: LG10118809

DESCRIPTION:

LABORATORY GROWN DIAMOND

SHAPE AND CUTTING STYLE:

SQUARE MODIFIED BRILLIANT

MEASUREMENTS:

4.73 x 4.67 x 3.37 MM.

GRADING RESULT:

Carat Weight:

0.66 CT(S)

Color Grade:

K

Clarity Grade:

VS2

PROPORTIONS:

Depth:

72.2%

Table:

69.5%

Crown Height %

12.0%

Pavilion Depth %

56.5%

Girdle:

THICK

Culet:

NONE

FINISH:

Polish:

VERY GOOD

Symmetry:

GOOD

FLUORESCENCE:

NONE

COMMENTS: LASERSCRIBE®: "LAB CREATED LG10118809 ". THE LABORATORY GROWN DIAMOND DESCRIBED ABOVE IS CLASSIFIED AS A TYPE IIA. ADDITIONAL PINPOINTS NOT SHOWN.

Red symbols denote internal characteristics (inclusions). Green or black symbols denote external characteristics (blemishes). Diagram in an approximate representation of this stone, and symbols shown indicate type, position, and approximate size of clarity characteristics. All clarity characteristics may not be shown. Details of finish are not shown.

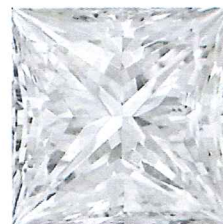
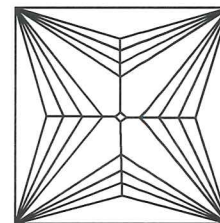
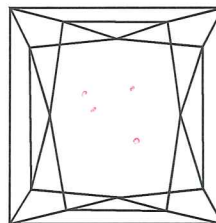


PHOTO ENLARGED

COLOR GRADING SCALE	CL		NC		FT		VLT		LT	
	COLORLESS D - F		NEAR COLORLESS G - J		FAINT K - M		VERY LIGHT N - R		LIGHT S - Z	
CLARITY (10X) GRADING SCALE	FL IF		VVS		VS		SI		I	
	FLAWLESS INTERNALLY FLAWLESS		VERY VERY SLIGHTLY INCLUDED		VERY SLIGHTLY INCLUDED		SLIGHTLY INCLUDED		INCLUDED	

The laboratory grown diamond described in this Report ("Report") has been graded, tested, analyzed, examined and/or inscribed by International Gemological Institute (I.G.I.) A laboratory grown diamond is one that has the same chemical, physical and optical properties as mined diamond, with the exception of being grown by man. I.G.I. employs and utilizes those techniques and equipment currently available to I.G.I., including, without limitation, 10X magnification, corrected triplet loupe and binocular microscope, master color comparison system, non-contact-optical measuring device, and such other instruments and/or processes as deemed appropriate by I.G.I. This Report includes advanced security features. A duly accredited gemologist or jeweler can advise you with respect to the importance of and interrelationship between cut, color, clarity and carat weight.

THIS REPORT IS NEITHER A GUARANTEE, VALUATION NOR APPRAISAL OF THE LABORATORY GROWN DIAMOND DESCRIBED HEREIN.