



INTERNATIONAL GEMOLOGICAL INSTITUTE

Expertise issued by I.G.I.
 589 Fifth Avenue, New York, NY 10017
 Tel: (212) 753-7100 Fax: (212) 758-7759
 www.igiworldwide.com

LABORATORY GROWN DIAMOND REPORT

DATE: 11/14/2012

REPORT NUMBER: LG10106119

DESCRIPTION:

LABORATORY GROWN DIAMOND

SHAPE AND CUTTING STYLE:

SQUARE MODIFIED BRILLIANT

MEASUREMENTS:

5.16 x 5.15 x 3.76 MM.

GRADING RESULT:

Carat Weight: 0.90 CT(S)
 Color Grade: K
 Clarity Grade: VS(2)

PROPORTIONS:

Depth: 73.0%
 Table: 74.5%
 Crown Height %: 9.0%
 Pavilion Depth %: 58.5%
 Girdle: MEDIUM TO THICK
 Culet: NONE

FINISH:

Polish: VERY GOOD
 Symmetry: GOOD

FLUORESCENCE:

NONE

COMMENTS: GIRDLE LASERSCRIBED "LAB CREATED LG10106119". THE LABORATORY GROWN DIAMOND DESCRIBED ABOVE IS CLASSIFIED AS A TYPE IIIA. PINPOINTS ARE NOT SHOWN.

Red symbols denote internal characteristics (inclusions). Green or black symbols denote external characteristics (blemishes). Diagram in an approximate representation of this stone, and symbols shown indicate type, position, and approximate size of clarity characteristics. All clarity characteristics may not be shown. Details of finish are not shown.

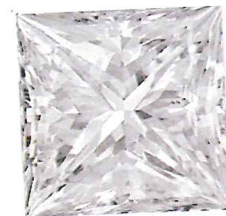
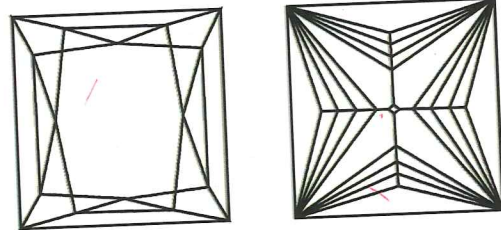


PHOTO ENLARGED

COLOR GRADING SCALE

CLARITY (10X) GRADING SCALE

CL COLORLESS D - F		NC NEAR COLORLESS G - J		FT FAINT K - M		VLT VERY LIGHT N - R		LT LIGHT S - Z	
FL FLAWLESS INTERNALLY FLAWLESS	IF INTERNAL FLAWLESS	VVS VERY VERY SLIGHTLY INCLUDED	VS VERY SLIGHTLY INCLUDED	SI SLIGHTLY INCLUDED		I INCLUDED			

The laboratory grown diamond described in this Report ("Report") has been graded, tested, analyzed, examined and/or inscribed by International Gemological Institute (I.G.I.). A laboratory grown diamond is one that has the same chemical, physical and optical properties as mined diamond, with the exception of being grown by man. I.G.I. employs and utilizes those techniques and equipment currently available to I.G.I., including, without limitation, 10X magnification, corrected triplet loupe and binocular microscope, master color comparison system, non-contact-optical measuring device, and such other instruments and/or processes as deemed appropriate by I.G.I. This Report includes advanced security features. A duly accredited gemologist or jeweler can advise you with respect to the importance of and interrelationship between cut, color, clarity and carat weight.

THIS REPORT IS NEITHER A GUARANTEE, VALUATION NOR APPRAISAL OF THE LABORATORY GROWN DIAMOND DESCRIBED HEREIN.

See Terms and Limitation on Reverse.