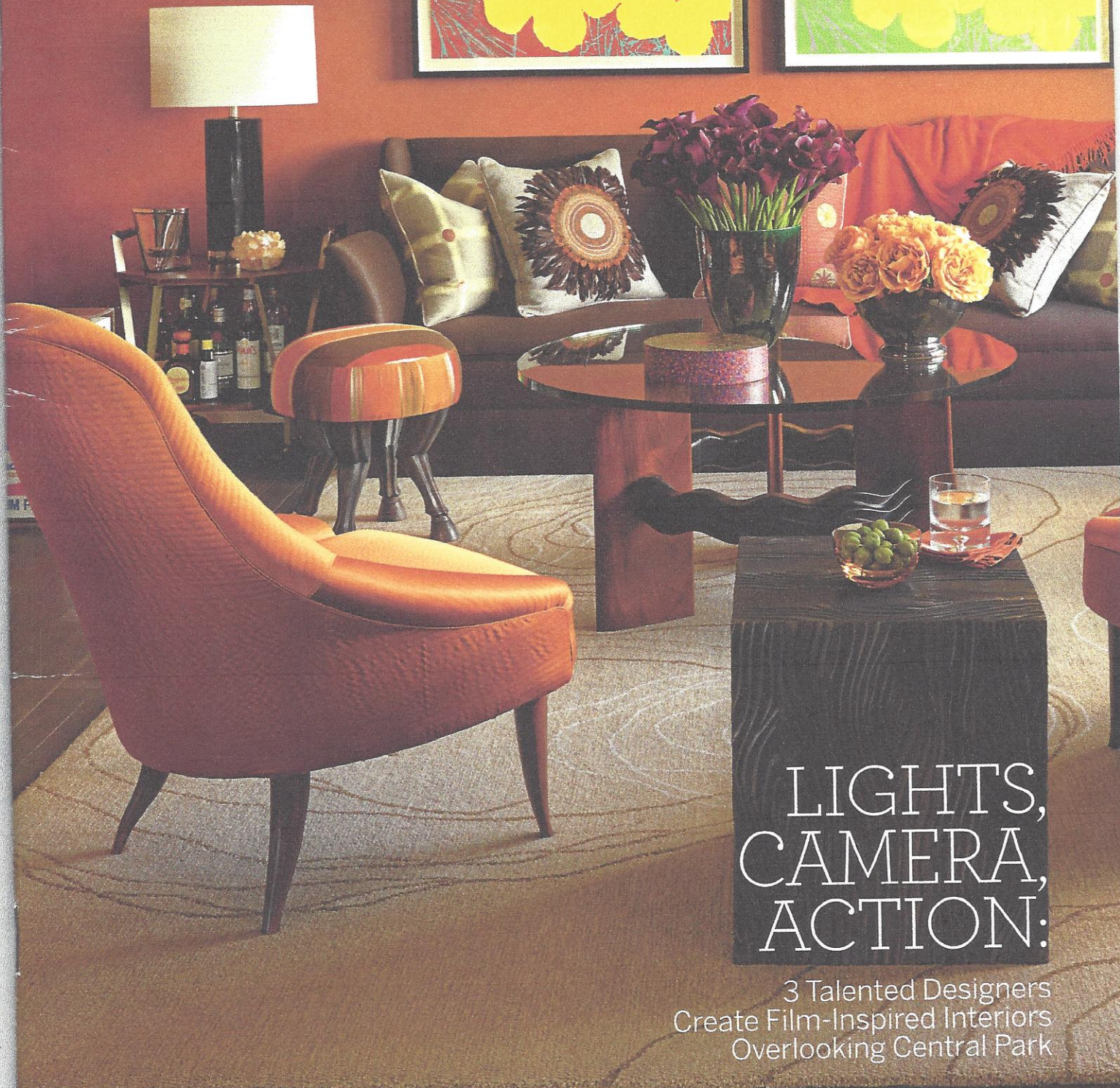
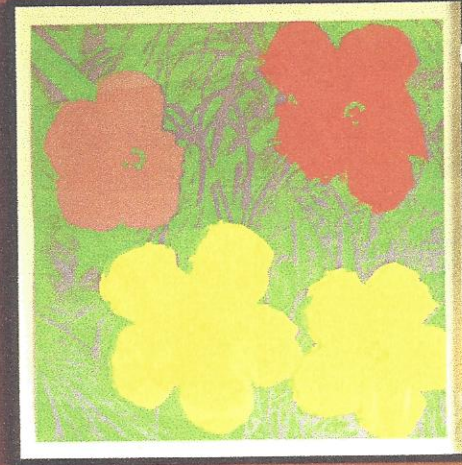
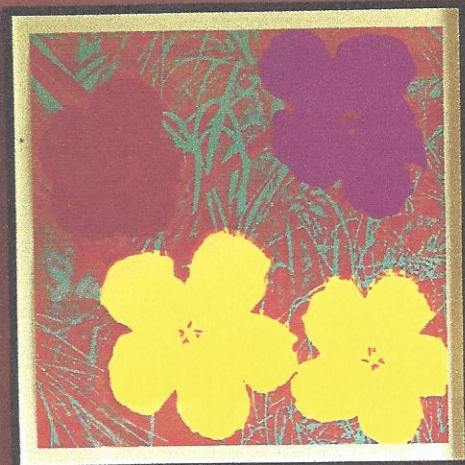


# DESIGNER VISIONS

CINEMA STYLE

TWELVE  TWELVE  
FIFTH AVENUE



## LIGHTS, CAMERA, ACTION:

3 Talented Designers  
Create Film-Inspired Interiors  
Overlooking Central Park

HouseBeautiful

TOWN&COUNTRY

VERANDA



# FACTORY GIRL

INTERIOR DESIGN BY  
HEATHER MOORE  
OF JED JOHNSON ASSOCIATES



Living Room

SETTING FOR A SUPERSTAR. THAT'S THE OEUVRE INTERIOR DESIGNER HEATHER MOORE SUMMONED IN CREATING THIS COLORFUL POP ART PALACE FOR EDIE SEDGWICK, ANDY WARHOL'S MUSE AND SANTA BARBARA SOCIALITE who in the mid 1960s became famous for being famous—and ultimately the subject of *Factory Girl*, the 2006 biopic starring actress Sienna Miller.

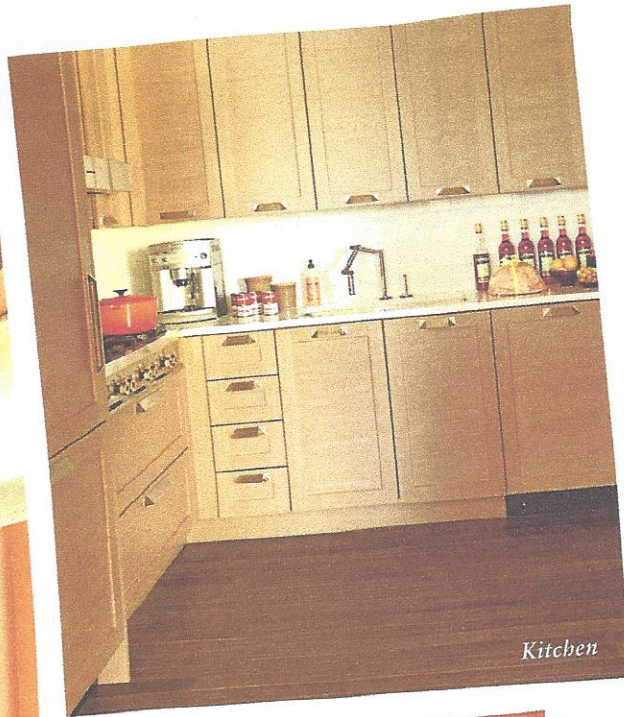
As the senior designer at the firm founded by Warhol's longtime partner, Jed Johnson, Moore drew on the bold hues and shiny objects indigenous to Warhol's "Factory," and designed a glamorous refuge where the charismatic

and photogenic former party girl could now reside with her family.

"To me it represents a subtle elegance in a soothing environment with a mid-century vibe," says Moore.

Moore paired iconic vintage pieces with authentic art and photography from the period, and accessorized with rich textures and graphic patterns—as well as personal effects like the It Girl's trademark chandelier earrings and sophisticated fashions. The result is a lively abode equally suitable for impromptu cocktail parties and *private reflection*.





Kitchen

## 1. Make room for conversation

OPPOSITE PAGE: For the walls, Moore chose a burnt orange color by **Ralph Lauren Paint**, which gives the room an inviting glow and provides a suitable backdrop for Warhol's *Flowers* screen prints. The arrangement of the furniture—the Antwerp sofa, accessorized by patterned and feathery pillows, and the pair of Eva chairs by Kerstin Horlin-Holmquist—facilitate conversation, as do the two-tiered octagonal cocktail trolley and one of Warhol's iconic Brillo boxes.

ABOVE: Designed by S. Russell Groves, the kitchen includes **KOHLER's** Karbon® articulating deck-mount faucet and Vault™ Smart Divide® double-equal sink.

BELOW: In the guest bathroom, **ANN SACKS** Collection tiles frame a lighted and mirrored **ROBERN** M Series vanity cabinet.

Speakers and sound system throughout from **Clareo**.

Light bulbs throughout from **Philips**.



Dining Room

## 2. Enhance a space's warmth with lighting and reflective surfaces

ABOVE: Whether nibbling on takeout or hosting a catered dinner for eight, Edie would have been at home in this glamorous dining space designed for entertaining. The chandelier, which recalls one of Edie's dangling earrings, accentuates the soft warmth of the room color, as does the surface of the oval table by Julian Chichester, which features a shiny hammered base in polished nickel. The contours of the Cyril chairs by Oly echo the curved shape of the table and encourage intimate dinner-party conversation.



Guest Bathroom





Media Room

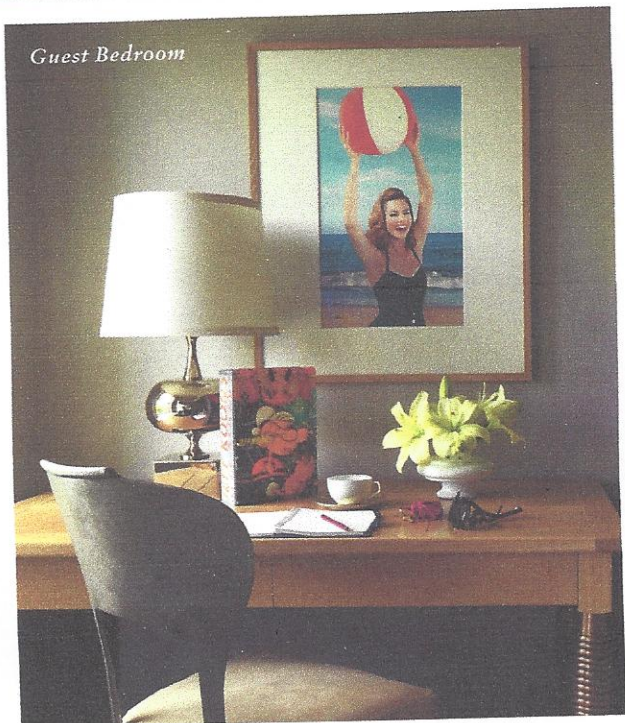
ABOVE: Media Room walls are painted in Arrow Wood with a suede specialty finish by **Ralph Lauren Paint**. **American Leather's** Chloe Comfort Recliner™ in Shimmer Toasted Marshmallow leather sits by the window.

RIGHT: Guest bedroom walls are painted in Tudric Pewter by **Ralph Lauren Paint**.

### 3. Showcase your personality

ABOVE: Moore gave possessions Edie would have adored, such as mid-century essentials like Pedro Friedberg's hand chair and a collage of vintage photographs of Warhol, James Dean, Bob Dylan—and her own famous screen test—center stage in this cozy media room. The graphically patterned, built-in banquette, an ideal place to curl up with a movie, is grounded by **Karastan's** Bixby carpet.

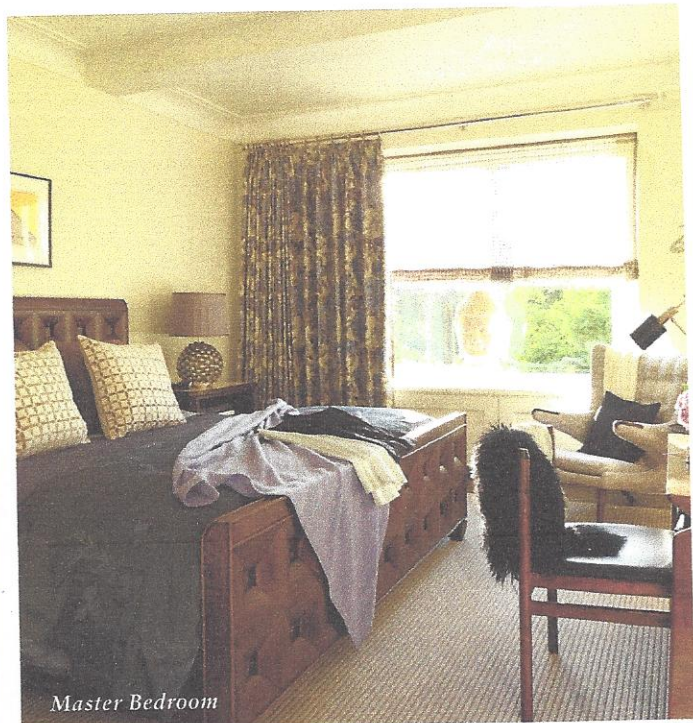
Guest Bedroom







Master Bathroom



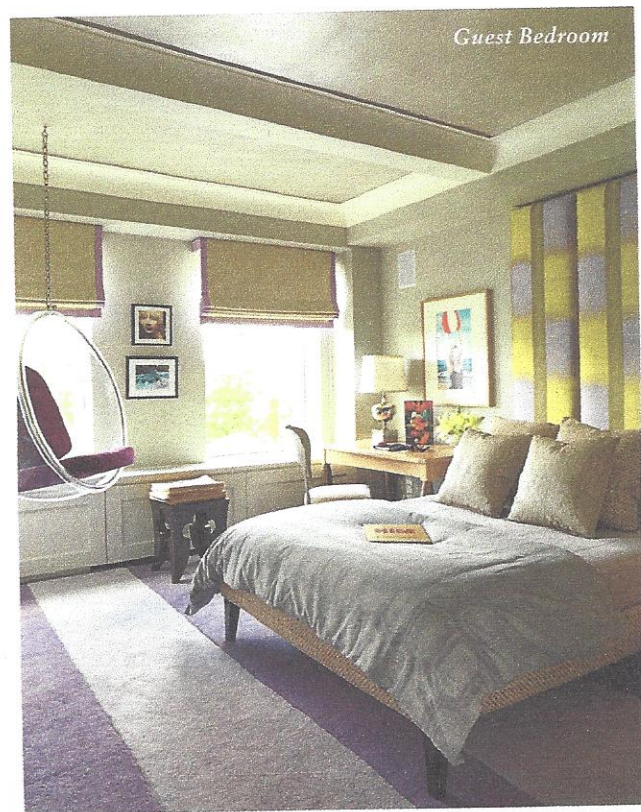
Master Bedroom

ABOVE: On the bed lie fashions fit for the glamorous Edie by **Talbots**

LEFT: The softly lit master bath features Veranda Bamboo Box Molding and Box Corners in Smoke Crackle by **ANN SACKS** Collection. **KOHLER**'s DTV Prompt™ digital shower and Numi™ toilet would have indulged her playful side.

#### 4. Create a space where you can retreat

ABOVE: When not out on the town, Edie could have luxuriated in her master bedroom and bath, both decorated in soothing hues that, according to Moore, give the space a sense of romance and evoke the ambience of a wispy cloud. In the master bath, a single tile used in a repeating pattern gives the space an earthy, textured warmth. The master bedroom derives its soothing feel from a combination of **Ralph Lauren Paint**'s Victorian Lace and **Karastan**'s Metallic Impressions carpet, while the guest bedroom (right) channels her whimsy with a custom-made, broad-striped **Karastan** carpet, a color-block fabric headboard, and a hanging Bubble Chair.



Guest Bedroom



## RESOURCES

# HOUSE BEAUTIFUL APARTMENT

### Page 14: Living Room

Wall Color in Cork and Trim Color in Rice, both by **Ralph Lauren Paint**; Antwerp Sofa from **Berns Fry Ltd.**; Sofa Fabric by **Brochier**; Furniture Upholstery courtesy of **Manzanares Furniture Corporation**; Raymond Loewy Area Carpet from **Edward Fields**; Curtain Fabric in Indocina/Mogano, Pillow Fabric in Catai/Brina, Chair Fabric in Duemilaudici/Ambra, Bench Cushion Fabric in Asinara, all by **Brochier**; Curtain Fabric courtesy of **La Regence**; Merritt Cube Table and Cornell Bench by **Jed Johnson Home**; Sufi Side Table with Clear Resin Top by **Ironies**; Kerstin Horlin-Holmquist Eva Chairs from **Hostler Burrows**; Black Ceramic Table Lamps, Vintage; Feather Pillows, Borsani Mahogany Cocktail Table and 2-Tier Octagonal Trolley, all from **Lorin Marsh**; Cocktail Set Ice Bucket by **Georg Jensen**; Citrine Votives by **Liz O'Brien**; Etched Botanical Glass Flutes by **Roost** from **Global Table**; Artwork: Andy Warhol's *Flowers*; Mark Fox's *Untitled* (Grid Mirror) available through the artist; Painted Wooden Box by Sara Sosnowy.

### Page 15: Kitchen

**KOHLER** products, see page 27; Espresso Maker by **De'Longhi**; Round French Oven in Flame by **Le Creuset**.

### Page 15: Dining Room

Wall Color in Cork and Trim Color in Rice, both by **Ralph Lauren Paint**; Cyril Dining Chairs and Sussex Side Chairs, both by **Oly**; Dakota Oval Dining Table by **Julian Chichester**;

Sputnik Chandelier by **Jonathan Adler**; Tura Cabinet from **Lorin Marsh**; Jens Quistgaard for Dansk Candlesticks from **Antony Todd Home**; Teacups, Tea Saucers, Salad Plates, all in Ecume Gold by **Bernardaud**; Basso Red and White Wine Glasses, Urn Spruce Vase, all by **Calvin Klein**; Dauville Gold-Brushed Nesting Bowls by **Canvas**; Rondo Gold Cutlery by **Home**; Service Plates, Dinner and Salad Plates, all in Tac O2 Dynamic Gold by **Rosenthal**; Aliseo Pitcher, Aliseo Water Glasses, Aliseo Wine Glasses, all by **NasonMoretti** from **TableArt**; Napkins in Sunset by **Sfera**; Dimmers from **Lutron**; Artwork: James Nares' *Untitled*, Damian Aquiles's *Missing Words* (Sculpture); Work on Paper by Ray Smith; Work on Paper by Damien Hirst.

### Page 15: Guest Bathroom

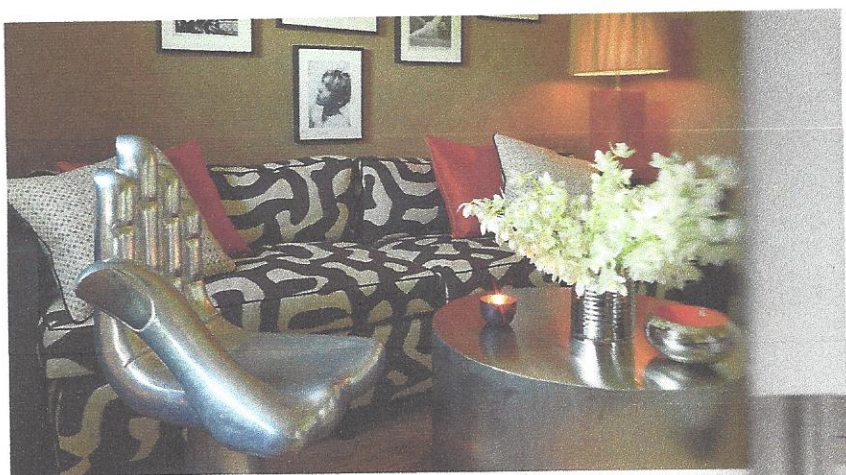
**KOHLER** products, see page 27; Wall, Ceiling, Door and Trim Color in Neutral White by **Ralph Lauren Paint**; Towels by **Ralph Lauren Home**.

### Page 16: Media Room

Wall Color in Arrow Wood with Suede Specialty Finish and Trim Color in Oatmeal by **Ralph Lauren Paint**; Bixby Carpet in Batik by **Karastan**; Chloe Comfort Recliner™ in Shimmer Toasted Marshmallow Leather and Espresso Wood Finish by **American Leather**; Built-in Banquette by **Manzanares Furniture Corporation**; Banquette Fabric in L'African/Zebre, Pillow Fabric in Jewel Topaz, Curtain Fabric in Faux Bois/Ash, all by **Jed Johnson Home**; Throw Fabric by **Casamance**; Table Lamp from **Lorin Marsh**; Bruno Cocktail Tables by **Oly**; Hand Chair by **Pedro Friedberg**; Curtain Fabric courtesy of **La Regence**; Suki Candleholder from **Crate and Barrel**; Candlestick Votives from **Dwell**; Photographs: Gerald Malanga's *Edie Sedgwick*; Billy Name's *Edie Screen Test*, *Andy Warhol, Edie in Profile* and *Edie Wearing Necklace*; Gerald Malanga's *Edie Sedgwick in Photo Booth*, all from **Lid Magazine**.

### Page 16: Guest Bedroom

Wall Color in Tudric Pewter and Ceiling Color in Evening Slipper



with Regent Metallics Specialty Finish, all by **Ralph Lauren Paint**; Carson Writing Table by **Jed Johnson Home**; Paris Table Lamps from **Profiles**; Beverly Side Chair by **Oly**; Chair Fabric in Bosforo Porpora by **Brochier**; Agenda, Pencil, Keychain, all by **Hermès**; Teacup and Saucer in Tac O2 Dynamic Gold by **Rosenthal**; Artwork: McDermott and McGough's *Day Following Day* from **Cheim & Read**.

### Page 17: Master Bathroom

**KOHLER** products, see page 27; Wall, Ceiling, Door and Trim Color in Cinderblock by **Ralph Lauren Paint**; Towels by **Ralph Lauren Home**; Baron Ceiling Light by **Restoration Hardware**.

### Page 17: Master Bedroom

Wall Color in Victorian Lace by **Ralph Lauren Paint**; Metallic Impressions Carpet in Brushed Steel by **Karastan**; Fashions by **Talbots**; Albers Bed by **Jed Johnson Home**; Bedding by **Calvin Klein Home**; Cashmere Throw from **ABC Carpet & Home**; Wyatt Bedside Table by **Jed Johnson Home**; Pillow Fabric in Secondigliano Glicine by **Brochier**; Benicia Table with Leather Top from **Profiles**; Anemone Lamps by Best & Lloyd from **George Smith**; Lamp Shades from **Blanche Field**; Desk Chair from **Lorin Marsh**; Papa Bear Arm Chair from **Manzanares Furniture Corporation**; Chair Fabric in Pancrazio by **Brochier**; Gregor Side Table by **Ironies**; Reading Lamp from **Lorin Marsh**; Curtain Fabric in Regina Coeli by **Brochier**; Roman Shade Fabric in Palmira

by **Brochier**; Curtain Fabrication courtesy of **La Regence**; Artwork: Roy Lichtenstein's *Pyramids* from **Mitchell-Innes & Nash**; Mark Fox's *Untitled* (Bee) available through the artist; Noh, Sang-Kyoon's *For the Worshipers* from **Bryce Wolkowitz Gallery**.

### Page 17: Guest Bedroom

Wall Color in Tudric Pewter and Ceiling Color in Evening Slipper with Regent Metallics Specialty Finish by **Ralph Lauren Paint**; Fine Visions Carpet with Alternating Bands of Silvermist and Heatherscent by **Karastan**; Carson Writing Table by **Jed Johnson Home**; Paris Table Lamps from **Profiles**; Beverly Side Chair by **Oly**; Chair Fabric in Bosforo Porpora by **Brochier**; Bed Frame from **West Elm**; Bed Frame Fabric in Jewel by **Jed Johnson Home**; Headboard Fabric in Madras Lilla by **Brochier**; Headboard Construction by **Fallou Workroom**; Pillow Fabric in Nuage/Smoke by **Jed Johnson Home**; Bedding by **Calvin Klein Home**; D'Artagnan Side Table by **Ironies**; Curtain Fabric in Maze/Quartz by **Jed Johnson Home**; Curtain Fabrication courtesy of **La Regence**; Agenda, Pencil, Keychain, all by **Hermès**; Teacup and Saucer in Tac O2 Dynamic Gold by **Rosenthal**; Artwork: McDermott and McGough's *Day Following Day* from **Cheim & Read**; Color Photographs by Pat Kurs; Light bulbs throughout by **Philips**.  
Media integration throughout provided by **Ciareo**.

