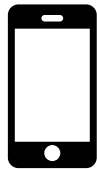
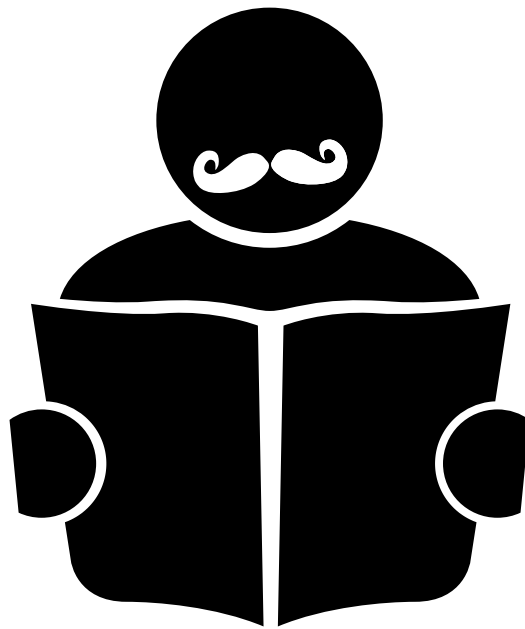


PRACTILITE[®]



Bi-Color
Smart LED Fresnel

602



User Manual

XINOTEHNIK

Thank you for choosing Practilite 602.

We welcome you to the wonderful world of high-efficiency, high-output LED lighting instruments.

We hope that Practilite 602 light lives up to your expectations... and beyond that.

This booklet contains necessary information on how to make most out of your Practilite 602 and its capabilities, also instructions on how to take proper care of the unit. Please take a moment to read through it.

We keep this manual constantly updated, so the latest version of it can be found at our webpage www.kinotehnik.com/practilite602/. If you feel that something is missing from the manual, please let us know.

If you have any further questions, please write to us at support@kinotehnik.com. We would be happy to answer and try our best to get back to you swiftly.

Also, we appreciate your feedback - if you have any ideas on how to make things better, please let us know and we will definitely consider.

By the way, many of your further questions might have been covered in the FAQ section of our webpage, be sure to check that out.

Good luck & happy shooting!



Tõnis Liivamägi
Founder of Kinotehnik
tonis@kinotehnik.com





Getting familiar with the Practilite 602

1. OLED Display - dimming (%) and colour temperature readout (Kelvin value)
2. BOOST button – activates intensified lumen output for 4500K (activates additional cooling)
3. ON/OFF button – toggles between standby and operational mode. In standby mode the instrument is recognisable by remote control and can be turned on, it will return to it's previous working state. Constant blinking of the red indicator means the power is too low.
4. Boost mode, upper LED indicator
5. Bluetooth LE connection, middle LED indicator
6. Power ON/OFF, Bottom LED indicator
7. Colour Balance knob* – changes the colour balance continuously from 3000 to 6000K
8. Dimmer knob* – dims the LED from 5 to 100% (140% in Boost mode)
9. Focusing knob – manual focus control for beam angle. Notice that focusing can not be performed from the App.
10. DC input (12-28V) 4-pin male XLR socket (leftmost pin „-“, rightmost pin „+“)
11. Yoke tightening lever
12. Yoke
13. Light stand receiver, accepts 5/8" (16mm) Baby Pin / spigot
14. 3.5" (80mm) borosilicate Fresnel lens
15. Front cooling slots, vent exhaust
16. Back cooling grille, air intake

Status indicators

- Boost mode ON (green), Boost in Standby Mode (orange), battery too low (red blinking).
- Not connected to remote host (red), connected (green), connected in standby mode (orange)
- Power ON (green), Standby (red)

*These physical control knobs will retain their dialed in value but will be overridden by remote application once activated.

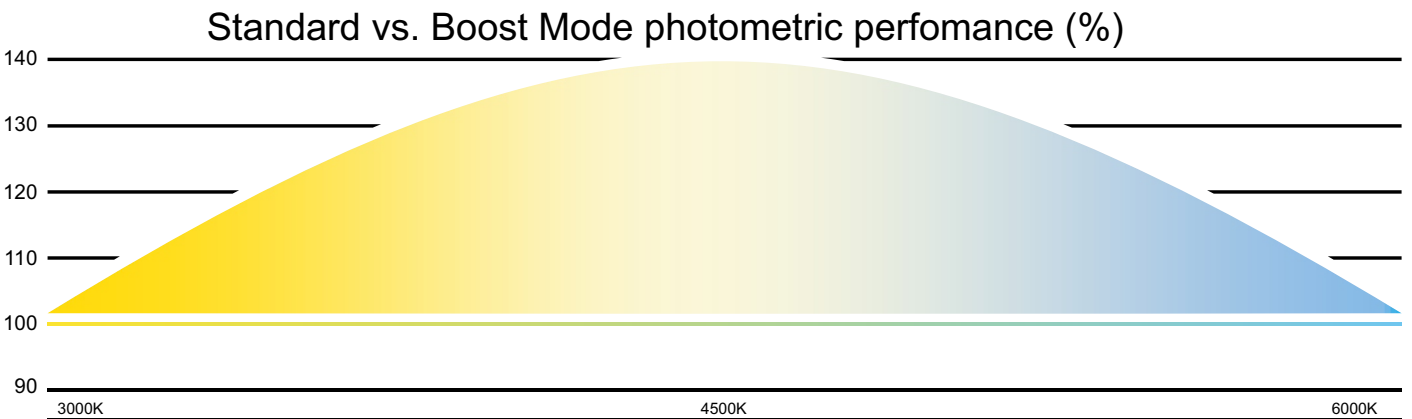
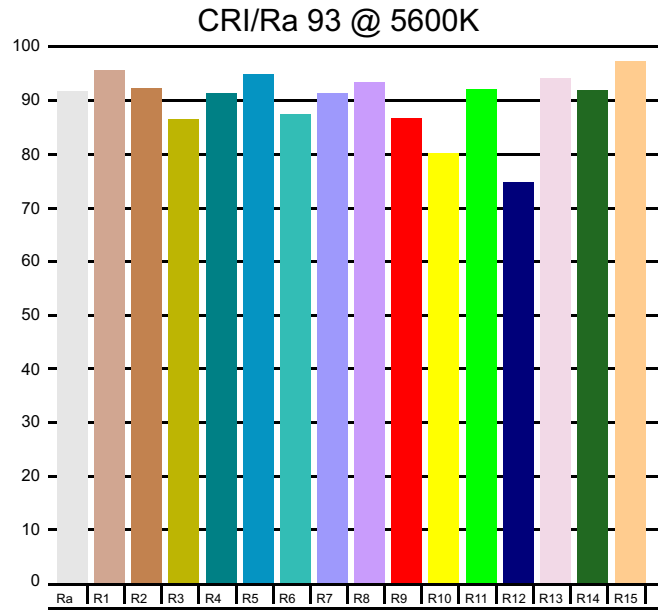
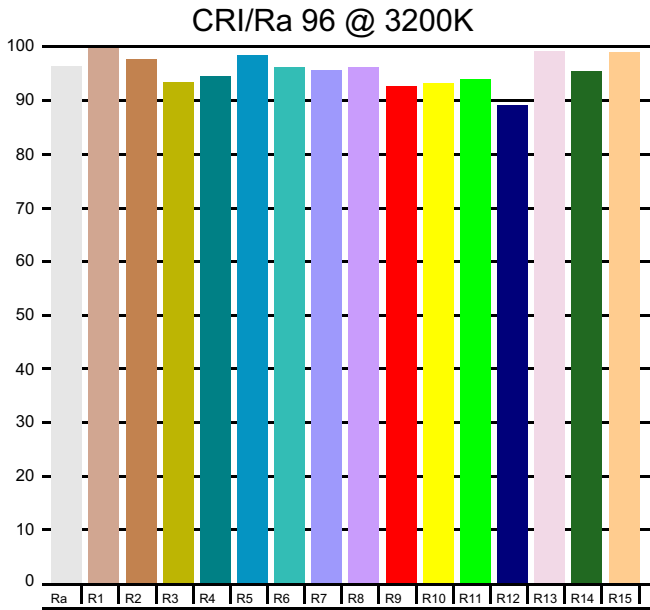
Photometric performance

DISTANCE	3.3ft / 1m	6.6ft / 2m	9.9ft / 3m
BEAM DIAMETER	Ø 5ft / 150cm	Ø 9.5ft / 290cm	Ø 14ft / 430cm
LIGHT INTENSITY	290fc / 3100lx	73fc / 780lx	32fc / 344lx
LIGHT INTENSITY @ Boost*	437fc / 4700lx	110fc / 1180lx	48fc / 522lx

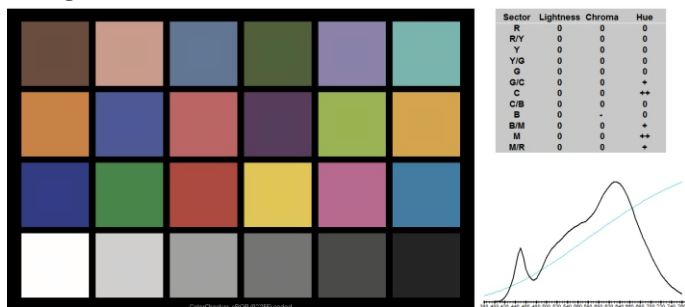
DISTANCE	3.3ft / 1m	6.6ft / 2m	9.9ft / 3m
BEAM DIAMETER	Ø 1ft / 34cm	Ø 2ft / 60cm	Ø 2.8ft / 86cm
LIGHT INTENSITY	930fc / 10000lx	233fc / 2508lx	103fc / 1110lx
LIGHT INTENSITY @ Boost*	1394fc / 15000lx	348fc / 3750lx	155fc / 1670lx

* Boost mode refers to 140% light output @ 4500K when engaged

Photometric performance



EBU: TLCI-2012 Tungsten 3200K 96



Daylight 5600K 93



Remote Control Application

For a quick video overview and introduction to the smartphone application visit www.kinotechnik.com/practilite602/remote. Otherwise, read on.

After downloading the Practilite remote control App make sure you turn on Bluetooth on your smartphone to enable effortless connection and control over one or up to six Practilite 602 instruments.

Launch the App and you will see three channels grayed out, there are three more hidden on the right side of the screen and can be revealed by swiping from right to left and vice versa.

Now, to make a connection just tap the magnifying glass with „+“ in it. Repeat the procedure for any remaining Practilites you might have set up. To identify which channel is connected to which instrument just tap the „eye“ it will blink the light associated.

To arrange the channels into a more logical sequence, hold your finger down on the vertical tab in the middle of a channel, it should light up to let you know that's it's ready to be dragged into a more logical and easy to remember position. Repeat this to all the lights connected and when satisfaction is achieved.

Now, when all the light are connected and arrange it's time to set the intensity of each or if you prefer set the appropriate colour balance by tapping the „OO“ tab on the bottom. Notice that you can link all or some of the connected lights together to have the same colour balance.

Light intensity linking is also available, independent from the colour balance.

There is also this „fan“ button which toggles the Boost mode on and off. Boost mode also requires a bit more cooling so the fan will rev up a bit. Boost mode works basically like if you engaged a tungsten bulb and a daylight bulb both at the same time almost doubling the lumen output. The downside is the need for cooling. **Please notice that Boost mode is disabled when working on battery power.** (Corresponding red indicator lights up on the fixture.)

What's included?

- Practilite 602
- LED Fresnel instrument
- Barndoors
- AC Adapter
- Re-usable foam insert for protection
- The manual that you're reading right now

Specifications

Light Source	High Power Dual Phosphor COB LED
Color Range	3000 to 6000K
CRI	≤96
Photometrics @ 1m/3,3ft	3000K to 6000K: Spot 10000lx, Flood 3100lx Boost Mode @ 4500K: Spot 15000lx, Flood 4700lx
Control	Local (color balance, dimming, manual focus) iOS 8.0+ and Android Devices via free Practilite Remote Control App Bluetooth LE: up to 6 fixtures, 30' (10m) range
Display	Sunlight readable OLED screen
Beam Angle	15 – 75°
Lens	3.2" (80 mm), Borosilicate glass Fresnel
Cooling	Hybrid Super Silence Active Cooling (Sub 12dB)
Operating Voltage	100-240 VAC, 50/60 Hz, 12-28 VDC (via locking 4-pin XLR)
Power Consumption	85 W max.
Cable	10' (3m) attached to external AC adapter
Battery	External via optional battery plates (V-Mount, Gold Mount)
Dimensions	Housing diameter 4" (100mm), 4 x 7 x 6" (10 x 17 x 15cm)
Construction	Durable CNC machined aluminum and stainless steel
Compatible speedring	Profoto standard 4" (100mm) inner diameter
Mount	5/8" (16mm) Baby Pin
Weight	2.9 lb (1.3kg)

Precautions and warnings

- Do not block any ventilation slots or grille in the back.
- Do not operate the instrument with closed barndoors. Danger of overheating.
- Never leave the instrument ON unattended.
- Do not misuse the DC cable for transport or suspension of the instrument.
- Do not operate the instrument if it shows any visible damage.
- In addition to regular visual inspection, you should have the instrument thoroughly inspected and serviced at least once in every 24 months.

The manufacturer disclaims liability for any damage to persons or property caused by inappropriate operation, damage of this kind lies in the responsibility of the operator



TIP: Use the custom cut foam to protect your Practilite whenever not in use and specially when in transit. You can fit up to three of these into a standard 1510 Pelican case which is carry-on friendly.

Design and specifications subject to change without notice.

Thank you for reading!



This device complies with part 15 of the FCC Rules. Operation is subject to the following two conditions: (1) This device may not cause harmful interference, and (2) this device must accept any interference received, including interference that may cause undesired operation.
The device is in accordance with 89/336 ECC-ENC Directive.

www.kinotehnik.com

KINOTEHNIK