

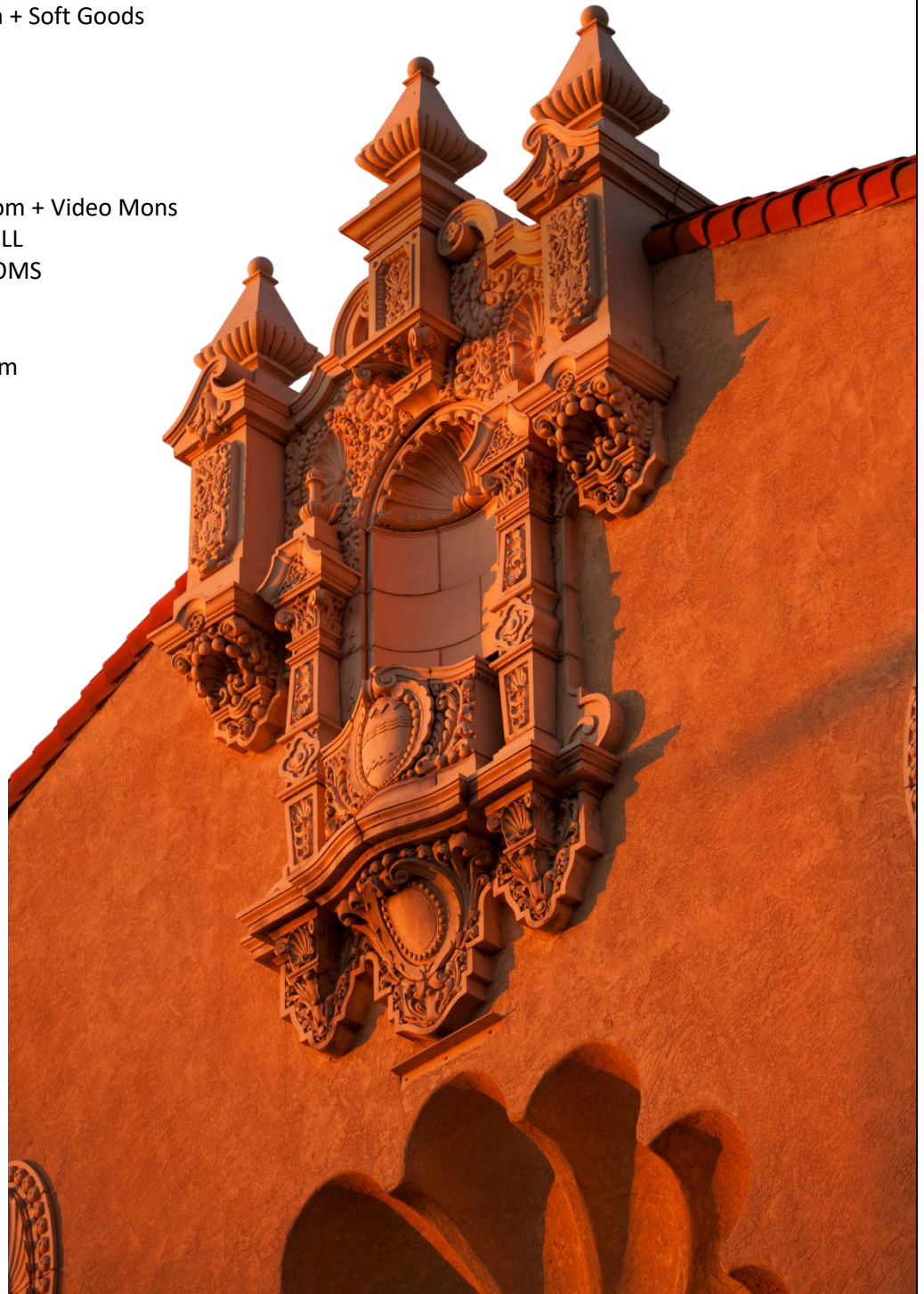
# The Lensic

Santa Fe's Performing Arts Center

## TECHNICAL SPECIFICATIONS VERSION: MARCH 2026

### TABLE OF CONTENTS

2. General Information + Contacts
3. STAGE SPECS: Stage dims + Floor
4. STAGE SPECS: Stage Ground Plan
5. STAGE SPECS: Loading Dock + Loading Door/Parking + Power + Flooring/Equipment
6. STAGE SPECS: Rigging System + Soft Goods
7. LIGHTING
8. LIGHTING
9. LIGHT PLOT
10. AUDIO
11. AUDIO
12. COMMUNICATIONS: Clear Com + Video Mons
13. PROJECTION + CONCERT SHELL
14. WARDROBE + DRESSING ROOMS
15. House Policies – *Please read*
16. Stage Level DR RMS Diagram
17. Second Floor DR RMS Diagram
18. Basement DR RMS Diagram





**STAGE SPECIFICATIONS**

**DIMENSIONS**

Proscenium opening			
Width:	39' 9"		
Height:	22' 0"	@ Centerline	24'-6" Max
Plaster line to furthest US pipe:	37' 4"	(Line set #60)	Varied due to decorative arch
Plaster line to DS edge of stage:	2' 2"		
Plaster line to DS edge of apron:	8' 6"	@ Centerline	Orchestra pit lift adjustable to any height
Plaster line to mid-stage traveler:	22' 4"	(Line set #34)	
Stage width wall-to-wall:	62' 2"		
SL loading rail to SR pin rail:	53' 0"		
Wing space			
SL width:	11' 2"	to Fly Rail	
SL depth:	39' 7"		
SL clearance:	18' 5"		
SL pin rail height:	26' 8"	to Pin Rail	
SR width:	11' 3"	to plaster on SR wall	
SR depth:	39' 7"		
SR clearance:	15' 9"		
SR pin rail height:	26' 8"	to Pin Rail	
Height from stage floor to grid:	58' 6"	to walking surface of grid	
Height from seating to stage floor:	3' 0"	from Orchestra pit lift at audience level	
Upstage storage:	18' x 52'		

*54 sections of D'Anser sprung floor (8'x8' footprint), plus 9 concert shell walls (8'x16' footprint) are permanently stored in this area.*

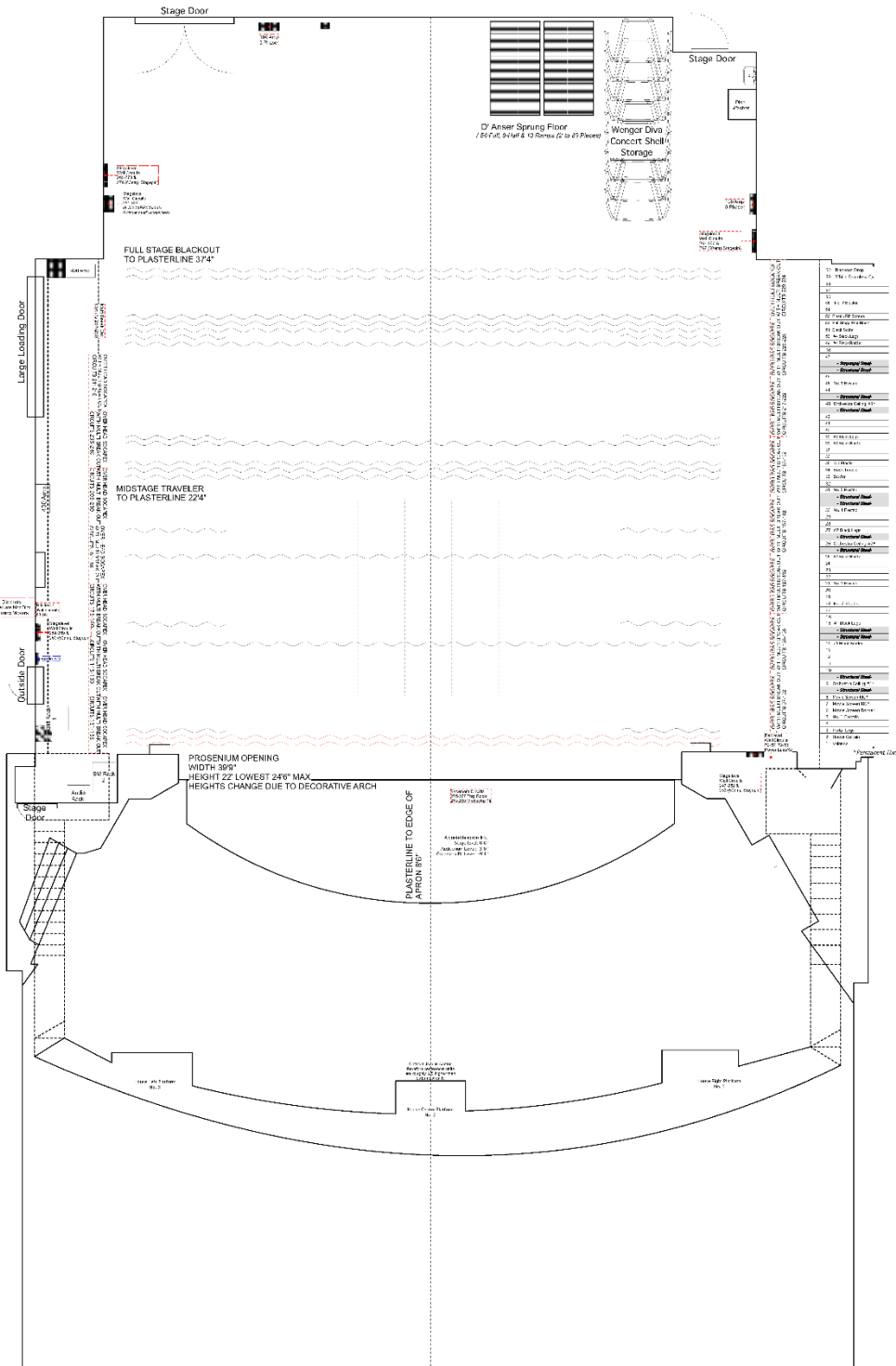
Orchestra Pit Lift / Apron	Height adjustable by Gala Spiralift	Maximum speed 4.5' per minute
Width:	38' 9"	
Depth:	8' 0" @ Centerline	3' 6" @ Ends
Orchestra Pit		
Width:	38' 9"	
Depth:	16' 0" @ Centerline	11' 0" @ Ends
Height:	9' 0" Below Stage Level	

**FLOOR**

Flat, isolated blonde maple                      Condition: Good, installed 4/2001    Low VOC re-finish 1/2023

*Floor was replaced in 2001, details are on page 5.*

**\*\*\*Fasteners (nails, screws, etc.) may not be used in the stage floor under any circumstances.\*\*\***



1	ANSAR SPRING FLOOR
2	WONGOR DIVA CONCERT SHELL STORAGE
3	FULL STAGE BLACKOUT TO PLASTERLINE 374'
4	MIDSTAGE TRAVELER TO PLASTERLINE 224'
5	PROSCENIUM OPENING WIDTH 39'9"
6	HEIGHT 22' LOWEST 24'8" MAX
7	PLASTERLINE TO EDGE OF APRON 8'0"
8	ANSAR SPRING FLOOR (2'0" x 2'0" x 12'0" x 12'0" x 12'0" x 12'0")
9	WONGOR DIVA CONCERT SHELL STORAGE
10	FULL STAGE BLACKOUT TO PLASTERLINE 374'
11	MIDSTAGE TRAVELER TO PLASTERLINE 224'
12	PROSCENIUM OPENING WIDTH 39'9"
13	HEIGHT 22' LOWEST 24'8" MAX
14	PLASTERLINE TO EDGE OF APRON 8'0"
15	ANSAR SPRING FLOOR (2'0" x 2'0" x 12'0" x 12'0" x 12'0" x 12'0")
16	WONGOR DIVA CONCERT SHELL STORAGE
17	FULL STAGE BLACKOUT TO PLASTERLINE 374'
18	MIDSTAGE TRAVELER TO PLASTERLINE 224'
19	PROSCENIUM OPENING WIDTH 39'9"
20	HEIGHT 22' LOWEST 24'8" MAX
21	PLASTERLINE TO EDGE OF APRON 8'0"
22	ANSAR SPRING FLOOR (2'0" x 2'0" x 12'0" x 12'0" x 12'0" x 12'0")
23	WONGOR DIVA CONCERT SHELL STORAGE
24	FULL STAGE BLACKOUT TO PLASTERLINE 374'
25	MIDSTAGE TRAVELER TO PLASTERLINE 224'
26	PROSCENIUM OPENING WIDTH 39'9"
27	HEIGHT 22' LOWEST 24'8" MAX
28	PLASTERLINE TO EDGE OF APRON 8'0"
29	ANSAR SPRING FLOOR (2'0" x 2'0" x 12'0" x 12'0" x 12'0" x 12'0")
30	WONGOR DIVA CONCERT SHELL STORAGE
31	FULL STAGE BLACKOUT TO PLASTERLINE 374'
32	MIDSTAGE TRAVELER TO PLASTERLINE 224'
33	PROSCENIUM OPENING WIDTH 39'9"
34	HEIGHT 22' LOWEST 24'8" MAX
35	PLASTERLINE TO EDGE OF APRON 8'0"
36	ANSAR SPRING FLOOR (2'0" x 2'0" x 12'0" x 12'0" x 12'0" x 12'0")
37	WONGOR DIVA CONCERT SHELL STORAGE
38	FULL STAGE BLACKOUT TO PLASTERLINE 374'
39	MIDSTAGE TRAVELER TO PLASTERLINE 224'
40	PROSCENIUM OPENING WIDTH 39'9"
41	HEIGHT 22' LOWEST 24'8" MAX
42	PLASTERLINE TO EDGE OF APRON 8'0"
43	ANSAR SPRING FLOOR (2'0" x 2'0" x 12'0" x 12'0" x 12'0" x 12'0")
44	WONGOR DIVA CONCERT SHELL STORAGE
45	FULL STAGE BLACKOUT TO PLASTERLINE 374'
46	MIDSTAGE TRAVELER TO PLASTERLINE 224'
47	PROSCENIUM OPENING WIDTH 39'9"
48	HEIGHT 22' LOWEST 24'8" MAX
49	PLASTERLINE TO EDGE OF APRON 8'0"
50	ANSAR SPRING FLOOR (2'0" x 2'0" x 12'0" x 12'0" x 12'0" x 12'0")
51	WONGOR DIVA CONCERT SHELL STORAGE
52	FULL STAGE BLACKOUT TO PLASTERLINE 374'
53	MIDSTAGE TRAVELER TO PLASTERLINE 224'
54	PROSCENIUM OPENING WIDTH 39'9"
55	HEIGHT 22' LOWEST 24'8" MAX
56	PLASTERLINE TO EDGE OF APRON 8'0"
57	ANSAR SPRING FLOOR (2'0" x 2'0" x 12'0" x 12'0" x 12'0" x 12'0")
58	WONGOR DIVA CONCERT SHELL STORAGE
59	FULL STAGE BLACKOUT TO PLASTERLINE 374'
60	MIDSTAGE TRAVELER TO PLASTERLINE 224'
61	PROSCENIUM OPENING WIDTH 39'9"
62	HEIGHT 22' LOWEST 24'8" MAX
63	PLASTERLINE TO EDGE OF APRON 8'0"
64	ANSAR SPRING FLOOR (2'0" x 2'0" x 12'0" x 12'0" x 12'0" x 12'0")
65	WONGOR DIVA CONCERT SHELL STORAGE
66	FULL STAGE BLACKOUT TO PLASTERLINE 374'
67	MIDSTAGE TRAVELER TO PLASTERLINE 224'
68	PROSCENIUM OPENING WIDTH 39'9"
69	HEIGHT 22' LOWEST 24'8" MAX
70	PLASTERLINE TO EDGE OF APRON 8'0"
71	ANSAR SPRING FLOOR (2'0" x 2'0" x 12'0" x 12'0" x 12'0" x 12'0")
72	WONGOR DIVA CONCERT SHELL STORAGE
73	FULL STAGE BLACKOUT TO PLASTERLINE 374'
74	MIDSTAGE TRAVELER TO PLASTERLINE 224'
75	PROSCENIUM OPENING WIDTH 39'9"
76	HEIGHT 22' LOWEST 24'8" MAX
77	PLASTERLINE TO EDGE OF APRON 8'0"
78	ANSAR SPRING FLOOR (2'0" x 2'0" x 12'0" x 12'0" x 12'0" x 12'0")
79	WONGOR DIVA CONCERT SHELL STORAGE
80	FULL STAGE BLACKOUT TO PLASTERLINE 374'
81	MIDSTAGE TRAVELER TO PLASTERLINE 224'
82	PROSCENIUM OPENING WIDTH 39'9"
83	HEIGHT 22' LOWEST 24'8" MAX
84	PLASTERLINE TO EDGE OF APRON 8'0"
85	ANSAR SPRING FLOOR (2'0" x 2'0" x 12'0" x 12'0" x 12'0" x 12'0")
86	WONGOR DIVA CONCERT SHELL STORAGE
87	FULL STAGE BLACKOUT TO PLASTERLINE 374'
88	MIDSTAGE TRAVELER TO PLASTERLINE 224'
89	PROSCENIUM OPENING WIDTH 39'9"
90	HEIGHT 22' LOWEST 24'8" MAX
91	PLASTERLINE TO EDGE OF APRON 8'0"
92	ANSAR SPRING FLOOR (2'0" x 2'0" x 12'0" x 12'0" x 12'0" x 12'0")
93	WONGOR DIVA CONCERT SHELL STORAGE
94	FULL STAGE BLACKOUT TO PLASTERLINE 374'
95	MIDSTAGE TRAVELER TO PLASTERLINE 224'
96	PROSCENIUM OPENING WIDTH 39'9"
97	HEIGHT 22' LOWEST 24'8" MAX
98	PLASTERLINE TO EDGE OF APRON 8'0"
99	ANSAR SPRING FLOOR (2'0" x 2'0" x 12'0" x 12'0" x 12'0" x 12'0")
100	WONGOR DIVA CONCERT SHELL STORAGE

**Notes:**  
 1. ALL DIMENSIONS UNLESS OTHERWISE SPECIFIED ARE IN FEET AND INCHES.  
 2. ALL DIMENSIONS SHALL BE TO FACE UNLESS OTHERWISE SPECIFIED.  
 3. ALL DIMENSIONS SHALL BE TO CENTER UNLESS OTHERWISE SPECIFIED.  
 4. ALL DIMENSIONS SHALL BE TO THE CENTERLINE UNLESS OTHERWISE SPECIFIED.  
 5. ALL DIMENSIONS SHALL BE TO THE CENTERLINE UNLESS OTHERWISE SPECIFIED.  
 6. ALL DIMENSIONS SHALL BE TO THE CENTERLINE UNLESS OTHERWISE SPECIFIED.  
 7. ALL DIMENSIONS SHALL BE TO THE CENTERLINE UNLESS OTHERWISE SPECIFIED.  
 8. ALL DIMENSIONS SHALL BE TO THE CENTERLINE UNLESS OTHERWISE SPECIFIED.  
 9. ALL DIMENSIONS SHALL BE TO THE CENTERLINE UNLESS OTHERWISE SPECIFIED.  
 10. ALL DIMENSIONS SHALL BE TO THE CENTERLINE UNLESS OTHERWISE SPECIFIED.

	ETC Sola 100 10' 10' 10'	ETC Sola 100 10' 10' 10'
	ETC Sola 100 10' 10' 10'	ETC Sola 100 10' 10' 10'
	ETC Sola 100 10' 10' 10'	ETC Sola 100 10' 10' 10'
	ETC Sola 100 10' 10' 10'	ETC Sola 100 10' 10' 10'
	ETC Sola 100 10' 10' 10'	ETC Sola 100 10' 10' 10'
	ETC Sola 100 10' 10' 10'	ETC Sola 100 10' 10' 10'
	ETC Sola 100 10' 10' 10'	ETC Sola 100 10' 10' 10'
	ETC Sola 100 10' 10' 10'	ETC Sola 100 10' 10' 10'
	ETC Sola 100 10' 10' 10'	ETC Sola 100 10' 10' 10'
	ETC Sola 100 10' 10' 10'	ETC Sola 100 10' 10' 10'

**Lighting Key**  
 Legend for lighting symbols and their corresponding inventory items.  
 Includes notes on lighting inventory, notes on storage room, and other technical details.

**Lensic Performing Arts Center - Light Plot**  
 211 W. San Francisco Street - Santa Fe, New Mexico 87501  
 505-988-7650 Voice 505-988-4370 Fax  
 Production Director: David Carter - Ext 1209  
 Lighting Supervisor: Abel Sepulveda - Ext 1404  
 Head Carpenter/Fly Operator: Eoghan Doyle - Ext 1250  
 Audio Supervisor: Alex Reiser - Ext 1214  
 Stage Manager: Seneca Phillips-McGraw - Ext 1406  
 Draft By: Abel Sepulveda  
 Updated: January 15, 2026  
 Scale: 1/4"=1'0"

**D**  
 1 of 1  
 Draft Date: July 7, 2016



**RIGGING SYSTEM**

Single purchase counterweight, with 1600 lb. arbor capacity (based on physical size of steel bricks. Arbors each will support 2000lb structurally.) Pipe point load may not exceed 320lbs per point. A one-ton Capstan winch is available; please contact the Production Manager for operational requirements.

Line sets:	60 on 6" Centers
Length of Pipes:	48' (limited extensions are available)
Number of Empty Pipes:	31 with use of Stock House Hanging Plan
Pin Rails:	SL & SR (+26'-8")
High Trim:	(+56'-4") all pipes except Concert Shell ceilings (+52'-4")
Low Trim:	(+4'-0")
Weight Loading:	15k lbs on Loading Rail <i>*25k lbs available in addition to above with extra labor charge</i>

**SOFT GOODS**

House Valence:	1	Size: 10'h x 47'w Color: Dark Red	Material: 25 oz. Velour, Full
Main Curtain:	1	Size: 25'h x 47'w Color: Dark Red	Material: 25 oz. Velour, Full
Black Legs:	10	Size: 28'h x 10'w Color: Black	Material: 25 oz. Velour, Flat
Black Tabs:	10	Size: 28'h x 8'w Color: Black	Material: 25 oz. Velour, Flat
Traveler:	1	Size: 28'h x 48'w Color: Black	Material: 25oz. Velour, 50% fullness
Flat Full Black:	1	Size: 28'h x 48'w Color: Black	Material: 22oz. Encore, Flat
Scrim:	2	Size: 28'h x 48'w Color: Black	Material: Sharks-tooth
Scrim:	1	Size: 28'h x 48'w Color: White	Material: Sharks-tooth
CYC:	1	Size: 28'h x 48'w Color: White	Material: Natural Muslin
Plastic/RP:	2	Size: 30'h x 50'w Color: White	Material: White Vinyl (Rosebrand)
Borders	2	Size: 15'h x 48'w Color: Black	Material: 25oz. Velour, Full
Borders	6	Size: 10'h x 48'w Color: Black	Material: 25oz. Velour, Full

*\* House valence and main curtain, movie screen & speakers, as well as concert shell ceilings pieces, cannot be moved.  
 All other house goods can be moved from rep positions but require ample time for restore.*

*Movement of the traveler requires a significant labor call and should be discussed well in advance with the Production Manager.*

*House curtain control: Manual guillotine, from a raised locking rail on the SL gallery or deck.*

*All soft goods are NFPAcompliant and flame-proofing certification can be provided on request.*

**RIGGING NOTES**

- ✓ Shock loads on battens are strictly prohibited. Any performance-related shock loads (silk drops, aerial rigging, etc.) must be submitted for pre-approval by the Production Manager prior to load-in.
- ✓ The Lensic has the ability to up-rig from the grid. Up-rigging requests must be discussed and approved in advance with the Production Manager.
- ✓ All rigging must be inspected and verified by a Lensic representative following installation and prior to use.

**LIGHTING**

Lighting Control Console is an ETC Apex 5 located in an enclosed booth at rear of orchestra level auditorium. Light booth windows do not open. Offline software for Apex 5 for both PC and Mac is available at: [Eos Family consoles \(etcconnect.com\)](http://Eos Family consoles (etcconnect.com))

The theater operates on a combination ETC net 3 node system and DMX can be provided from 15 areas in the theater via ethernet, including front of house, stage deck, both rails and the grid.

House lights and work lights are controlled through ETC Paradigm, which can be controlled via touch screen from the Light Booth, Stage Manager rack DSR, and additional button panels throughout the building. House lights can also be patched into the light board.

House dimmers are 2.4k ETC D20E Sensor Classic located in dimmer room basement level.

Light plot available VectorWorks 2024 or PDF; instrument schedule Lightwright 6 or PDF.

**Equipment Inventory**

56	ETC Series 3 Lustr X8 Fixtures	
20	ETC XDLT 19°	
16	ETC XDLT 26°	
16	ETC XDLT 36°	
4	ETC XDLT 50°	
210	ETC Source 4 Fixtures 750w	
10	ETC Source 4, 10° (lenses)	(12"x12" frames)
95	ETC Source 4, 26° (lenses)	(6.25" frames)
62	ETC Source 4, 36° (lenses)	(6.25" frames)
45	ETC Source 4, 19° (lenses)	(6.25" frames)
8	ETC Source 4, 50° (lenses)	(6.25" frames)
4	ETC Source 4, 90° (lenses)	(7.5" frames)
30	ETC Color Source Cycs	
15	Highend SolaPix 19	
10	ETC Halcyon Titanium	
8	Martin Mac Auras	
4	DTS Synergy 5 LED Moving Head Fixtures	
12	DTS Katana LED Light Bar Fixtures	
6	L & E, 12-Cell, 3 Circuit Par 56 strips (5a and 7a Electrics) - MFL 500w	
17	Wybron Cygnus Color MF 200w with barn doors	(7.5" frames)
2	DF-50 Hazer	
40	ETC Size A Pattern Holders	
32	ETC Size B Pattern Holders	
2	Lycian 1281 Super Star 1000 Spot Lights	
14	ETC Drop-in IRIS	

**ONSTAGE LIGHTING**

The onstage light plot is a semi-permanent "house hang" that can be altered where schedule and labor budget permit. This plot is maintained for use by many groups who provide neither a lighting designer nor technical staff yet desire substantial lighting. All changes to the house rep plot must be restored at the production's expense. **House plot has no stock focus or color.**

Standard house trims are 25' for focusing electrics (1, 2, 4, and 6) and the cyc electric (7), and 26' for backlight electrics (3, 4, and 6).

Onstage circuits are provided by 25 overhead 6-circuit multi-cable drops from the grid. There are five groups of three multi's on SL, and five pairs of two multi's on SR. They are tied off to the side galleries when used on overhead electrics. There are also single circuits available from wall panels: 9 each on the SL and SR rails, and 6 each in the DSL, DSR, USL, and USR corners at stage level.

Boom circuiting can be provided by the overhead multi-cables but will impact available circuit layout totals for the overhead electrics.

*\*Booms must be built on a show-by-show basis.*

Ground-row Color Source Cycs available.

Connectors are 3-pin (20A and 60A grounded stage pin).

*\*Ground-row must be built on a show-by-show basis.*

### F.O.H. LIGHTING

Lighting units may be focused, colored, moved, and patched as required by a production. All positions have existing circuits as indicated on the light plot. Connectors are 3-pin (20A and 60A grounded stage pin). **Concert shell light fixtures may not be refocused, moved, or gelled under any circumstances.**

#### Catwalk

Distance from Plaster Line: 28' at centerline, slightly closer at ends.

Height above Stage Level: 39' at centerline, slightly lower at ends.

Width each side of center: 30' including side follow spot platforms.

Permanent Equipment: (34) ETC Source 4-19°

Permanent Equipment: (20) ETC Source 4-26° (concert shell lighting only)

#### Balcony Rail

Distance from Plaster Line: 47' at centerline, slightly closer at ends.

Height above Stage Level: 12' to mounting pipe

Width each side of center: 32' L&R of centerline

Stock Hang: (5) ETC 19°

Stock Hang: (4) ETC 26°

Stock Hang: (2) Altman Par 64 1k WFL (Curtain Warmers)

#### Far Box Booms

Distance from Plaster Line: 37'

Distance L/R from Centerline: 33'

Height from Stage to Highest Mounting Position: 33'-6"

Height from Stage to Lowest Mounting Position: 21'-6"

Stock Hang: (2) ETC 10°

Stock Hang: (6) ETC 19°

Stock Hang: (2) ETC 26°

#### Near Box Booms

Distance from Plaster Line: 19'-6'

Distance L/R from Centerline: 32'

Height from Stage to Highest Mounting Position: 19'

Height from Stage to Lowest Mounting Position: 5'

Stock Hang: (4) ETC 36°

Stock Hang: (6) ETC 26°

*\*Near box booms are partially obstructed by house PA speakers, making them unusable for traditional box boom washes.*

#### Follow Spots

(2) Lycian 1281 Super Star 1000 Spot Lights LED.

Throw distance is approximately 93' to the plaster line.



**AUDIO**

**Maximum sound level shall not exceed 95dB LAeq1** (1-Minute Continuous Average, dB A-Weighted) measured at the Front-of-House mix position. The Lensic will provide the mix engineer with a real-time readout of this measurement to allow sound levels to be adjusted accordingly.

**House Sound System** d&b audiotechnik Q-Series Line Array, flown left and right of the proscenium

- Main Arrays: (4) d&b Qi1 and (1) Qi-SUB per side
- Auxiliary Subs: (2) d&b V-SUB
- Lower Balcony Fills: (2) d&b 10S-D
- Upper Balcony Fills: (2) d&b Q7
- Front Fills: (4) d&b E8 set on stage

Amplifiers and processing: d&b D6 and D12 remotely accessible with R1 software

FOH Mix position is in House Rows R & S, seats 101 thru 108  
 FOH Mix position seat kill minimum 6 seats, maximum 18 seats  
*There is no alternative console position available.*

**System Drives** Left, Right, Sub, Front Fill - Analog from FOH

**Consoles** (2) Yamaha Rivage PM3 with 48ch analog split

**Digital I/O** FOH: RPIO622 - 48ch In, 16ch Out  
 MONS: Rio3224, Rio1608 - 48ch In, 32ch Out

**Monitors** (12) d&b MAX2 15" coaxial

- Mics**
- (7) Shure SM58
  - (5) Shure SM57
  - (5) Shure Beta57
  - (4) Shure Beta56
  - (1) Shure Beta52
  - (1) Shure Beta91
  - (4) Sennheiser E604
  - (2) Sennheiser 609
  - (4) Sennheiser MD421
  - (6) Sennheiser E835
  - (2) Sennheiser E608 clip on
  - (1) AKG D112
  - (1) EV RE-20
  - (1) Beyerdynamic M88 TG
  - (3) Shure SM81
  - (2) AKG SE 300 B bases w/ (2) CK92 omni and (2) CK93 hypercardioid capsules
  - (2) AKG C414 XLS
  - (3) DPA 4099
  - (2) DPA 2015
  - (2) AT 4041
  - (1) Neumann KMS 105
  - (2) AT U857AL Podium Unipoint
  - (4) Audio Technica 8531 Choir mics

<b>Wireless</b>	(8) Channels Shure ULXD including (8) Handheld or (8) Belt Pack Transmitters (4) Channels Shure ULX including (4) Handheld or (4) Belt Pack Transmitters (12) SM58 Mic Heads (4) beta58 Mic Heads (1) KSM9 Mic Head (2) DPA 4061 Lavalier (2) DPA 6066 Headset (4) Shure WL93 Lavalier (2) Shure WL183 Lavalier (2) Shure WL185 Lavalier (2) Countryman B3 Lavalier (1) Countryman B6 Lavalier (1) Countryman E6 Headset, Long, Med Sensitivity
<b>D.I.'s</b>	(4) Countryman Type 85 D.I. (2) Radial J48 (2) Radial Pro D2 Stereo D.I.
<b>Stands</b>	(11) Tall boom tripod base (12) Short boom (5) Round base straight
<b>Snakes</b>	Cat 5e Ethercon: 6 lines Stage Left to FOH, 4 lines Stage Right to FOH  8ch Analog Snake: Stage Left to FOH

*Supply of XLR cables, instrument cables, and adapters available*

**Acoustic Control System (ACS)**

Our Acoustic Control System (ACS) and Wenger Diva Acoustical Shell enhance the acoustics of the hall for chamber, symphonic, and choral performances. With 24 microphones and 64 speakers discreetly placed throughout the theater, we can change the perceived size and resonance of the acoustic space, recreating the ambiance of larger concert halls. The ACS System was fully serviced and upgraded in January of 2023.

**Assistive Listening System**

Inductive Hearing Loop: transmits sound directly to T-coil equipped hearing aids and assistive listening devices. T-coil Headsets and receivers are available by request from the house manager

AFI FM wireless transmitter: transmits sound over radio to bodypack receivers  
 FM Headsets and receivers are available by request from the house manager

**COMMUNICATIONS**

**Clear-Com**

**Hard Wired Locations**

Stage Manager Position DSR  
 Light Booth  
 Projection/Spot Booth  
 FOH Audio Position  
 Tech Table (audience orchestra ctr.)  
 Fly Rail USL, DSL  
 Pin Rail DSR  
 Balcony Rail HL, HR  
 USL  
 DSL  
 DSR (Stage Manager)  
 Orchestra Pit  
 Lobby HR House Manager  
 Catwalk Follow-spots  
 Selected Dressing Rooms

**Hard Wired Equipment**

(11) 1-channel belt-packs  
 (5) 2-channel belt-packs  
 (2) 2-channel PL-Pro KB 211 Speaker Stations (biscuit)  
 (5) 1-channel PL-Pro KB 212 Speaker Stations (biscuit)  
 (1) 8-channel MS 812 programmable Stage Mgr Station (biscuit)  
 (10) Iso single muff headsets  
 (3) Iso double muff headset  
 (4) Lightweight headsets  
 (1) Telephone style handset

**Pliant CrewCom Wireless Com**

(6) 2-channel beltpacks

**Tempest Wireless Com**

(5) 2-channel beltpacks

**Dressing Room Announce**

Paging available from Stage Manager rack DSR

**Video Monitoring**

**Camera Feeds**

Stage Camera, Lobby Camera, House Camera

**TV Monitor Locations**

Stage Manager's Rack (DSR), Green Room, Production Office, Stage Left, Fly Rail

*Additional Video Routing and Monitoring can be arranged as needed*

## PROJECTION

### **Movie Screen**

35' Width, 17' Height

Rosebrand, replaced January 2017

Movie screen is PERMANENTLY hung on Line set #7 & #8.

System is on box truss frame with integrated movie speakers (3 by EAW) w/adjustable tracked side masking and fixed bottom border.

Adjustable top border is located on Line set #6.

*The 1<sup>st</sup> Electric and the movie screen cannot be used simultaneously.*

### **Projection Screens**

2 x 50' Width, 30' Height white Rosebrand rear or front projection plastics

Hung on linesets 35 (midstage) and 53 (upstage)

1 x 14.4' Width, 8.4' Height Fast-Fold Screen, rear or front projection

### **Projectors\***

(2) 35mm Film- Simplex with Xenon source and Optical Dolby 5.1 Processor.

Throw: 93' 3/4" from lens to center of screen.

Panasonic PT-DZ21KU DLP (20,000 lumens) 3-D capable from projection booth (permanently installed, focused solely on the movie screen)

Epson Pro L1750U (15,000 lumens) 4K capable mounted on a platform upstage center (this projector may be moved)

Long and short throw lenses

Two (2) Epson Pro G7905 (7,000 lumens) 4K capable (permanently installed on balcony rail)

Focused on two (2) retractable screens in the opera boxes in the house

*\*Due to the high cost of lamps, there is an additional rental fee for all projectors.*

Dolby Digital 5.1 audio is only available for sources in the projection booth

Distributed SDI video cabling is installed throughout the facility. Format converters and various switching and routing options can be arranged as needed. Contact the Production Director for details.

## CONCERT SHELL

Wenger Diva® Acoustical Shell <http://www.wengercorp.com/Lit/Wenger%20Diva%20Acoustical%20Shell-TS.pdf>

3 ceiling pieces\*, 9 wall pieces (24'/22'/20') with integrated lighting, plus dedicated FOH lighting.

Shell ceilings occupy line sets #9, #26, #43, & store clear @ +40'-0"

*\*The concert shell ceiling pieces are permanently hung and cannot be moved.*

Towers set in three standard configurations to form shell walls.

Towers store USL in a 13' x 6' footprint and cannot be removed from the building.

See the ACS system section under Audio to learn how the acoustics for the shell are enhanced. Three Configurations of the Shell are available.

**WARDROBE**

Dedicated Wardrobe Room on basement level with:

- (2) washers & dryers
- (4) Steamers
- (2) Ironing boards and irons.

*Dry Cleaners: La Unica Dry Cleaners, 647 Cerrillos Road 505-983-1182*

**NOTE:** *If you require same day dry cleaning, please bring up to Hayley Hopkins in advance.*

**DRESSING ROOMS**

Backstage WIFI:            Touring Party      211welcome

Number of Rooms:        6

Number of Showers:      8

Location:                Behind stage at Stage Level, Basement, & 2nd Floor.

Access from stage is via doors to rear hallway in the UL & UR back wall corners.  
Stage door entrance from street is at the SR end of dressing room hallway.  
Elevator UC and stairwells UL & UR provide access to 2nd floor & basement.  
Separate restrooms available on all levels, in addition to dressing room facilities.  
No quick-change rooms. Temporary booths available to be set up where appropriate.  
Dressing rooms each have stage monitor speakers.

Stage Level:            1: Star Dressing Room USL (1-person) with sink, toilet, and shower.  
                              1: Small Dressing Room USC (3-people) with sink, toilet, and shower.

2nd Floor:              1: Star Dressing Room USL (1-person) with sink, toilet, and shower.  
                              1: Small Dressing Room USC (3-people) with sink, toilet, and shower.  
                              1: Greenroom at SR end of hallway.

Basement:              1: Medium Dressing Room (7-people) with sink and shower. Separate restrooms.  
                              1: Large Chorus Dressing Room (20-people) with 2 sinks, 2 toilets, and 2 showers.  
                              1: Wardrobe Room w/ (2) washer + (2) dryer at DSR end of SR basement hallway.

Please Note: Chorus Room is dividable, into 10/10 with separate entrances.

**Dressing room diagrams at the end of this document.**

## LENSIC HOUSE POLICIES

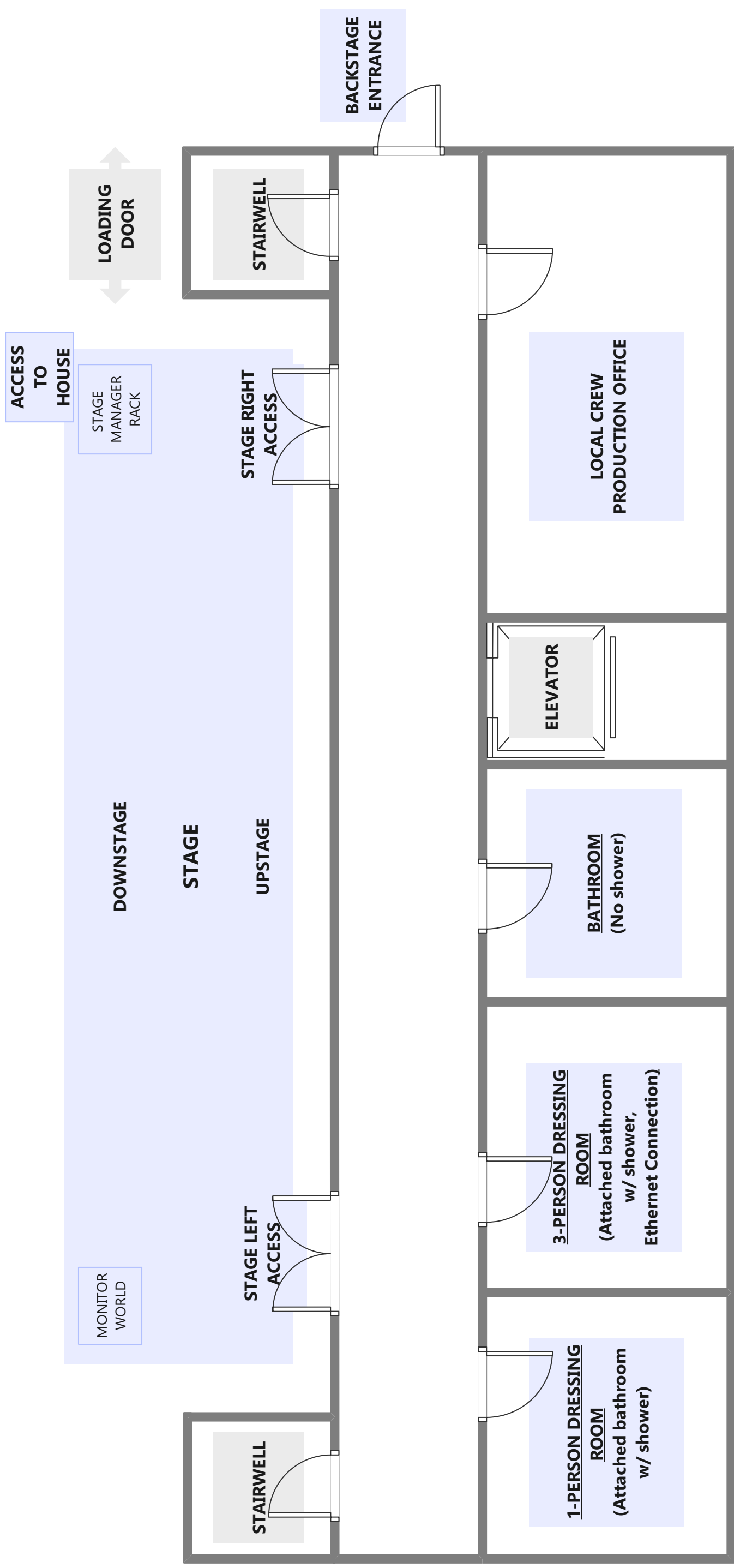
*please read*

- ✓ The organizer/production contact should be in touch with the Lensic Production Manager (Lauren Simon) at least ONE MONTH prior to the event to discuss schedule, crew, and technical needs and to complete the advance planning of the show.
- ✓ No alcohol may be brought into or removed from the Lensic (see full alcohol policy as signed during contracting).
- ✓ No fasteners may be placed into the surfaces of the theatre. This includes the stage and auditorium floors.
- ✓ Alterations to the lighting house hang and house soft goods must be discussed and approved in advance with the Production Manager. Changes will be restored to the original location after the final performance and to be paid for by the presenter.
- ✓ All LPAC perishables and labor will be charged to the presenter with their final bill after the show's completion.
- ✓ No changes may be made to the concert shell lighting.
- ✓ All LPAC equipment must remain in the theater.
- ✓ Any outside or rented equipment brought into the theater may be inspected and approved by an LPAC representative. LPAC is not responsible for any damages to this equipment.
- ✓ **Neither costumes nor props with glitter or loose glitter may be used in the theater. If you arrive with glitter on costumes, set pieces, on the performers themselves, etc., an automatic cleaning charge of \$1,000.00 will be applied to your final settlement.**
- ✓ Confetti or streamers must be approved prior to a performance. Additional cleaning fees may apply.
- ✓ All trash must be placed in receptacles at the end of the evening. Wet or food garbage must be taken directly to the dumpsters outside. An extra cleaning charge will be applied to perishables if excessive cleaning is needed.
- ✓ The stage floor will be swept and mopped at the end of every night, which will be included in production labor costs.
- ✓ Absolutely no work may be done above a seated audience.
- ✓ EXIT signs may not be obscured or turned off, and fire doors may not be blocked or propped open.
- ✓ All accidents must be reported immediately to a LPAC representative.
- ✓ All damages to the theatre or LPAC equipment is to be immediately reported to a LPAC representative. Repair and cost will be discussed with the presenter before any repairs are done.
- ✓ Changes to the HVAC can be made by a LPAC representative only. If you know of specific needs for your performance, please make these in advance of your time in the theatre. Changes requested while in the theater are possible, but there is a significant lag time for the changes to take place.
- ✓ **Sound pressure levels are capped at 95 dBA weighted at the mix position. This limit is strictly enforced.**
- ✓ There is absolutely no smoking in the building at any time. The alarm will sound and the building will be evacuated.
- ✓ LPAC is not responsible for any items lost, stolen or damaged.
- ✓ Security must be arranged at least 2 weeks prior to your event through Hayley Hopkins, Artist Services Manager.
- ✓ Every attempt is made to start shows promptly at the advertised curtain time. The Lensic does not practice a "standard curtain hold" at the top of the show.
- ✓ No "parties" or other non-performance special events are permitted at the Lensic without special permission from the Lensic and advance coordination with appropriate Lensic staff.



**The Lensic**  
Performing Arts Center

# FIRST FLOOR / STAGE LEVEL DRESSING ROOM DIAGRAM

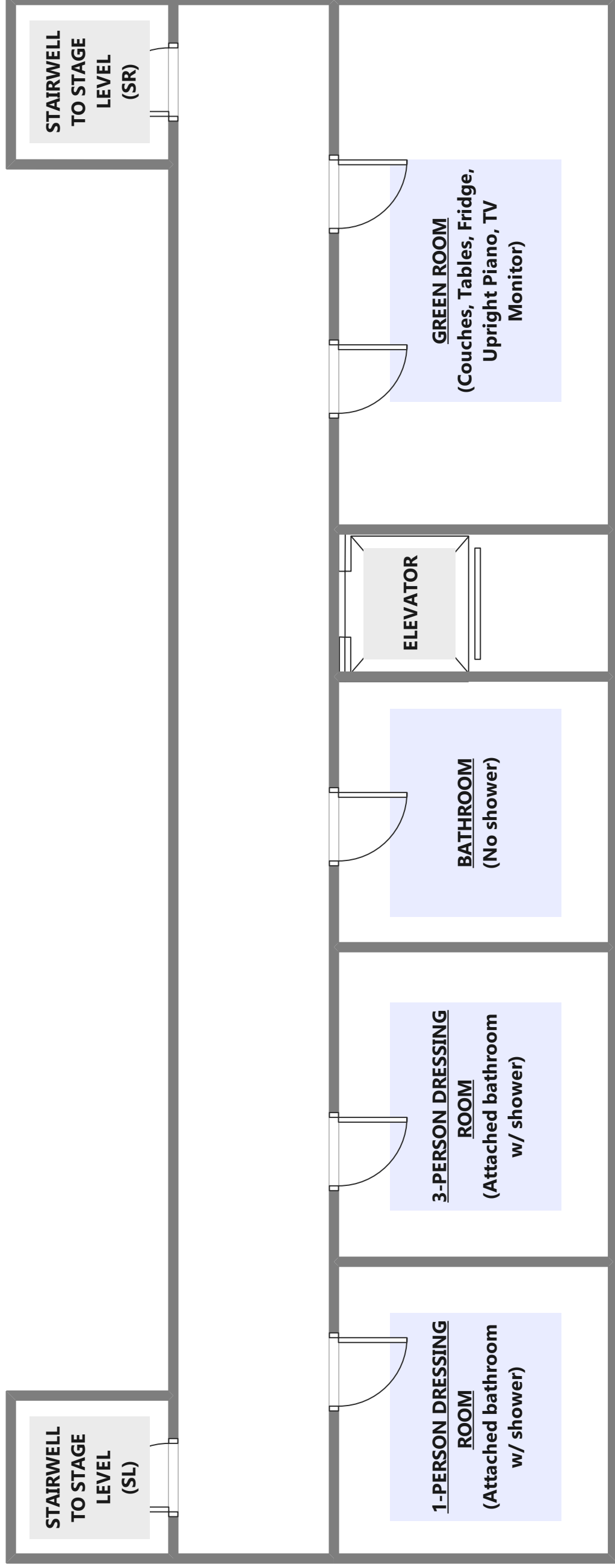


Dressing room paging available from Stage Manager rack DSR  
**WiFi:** Touring Party, **Password:** 211welcome



The  
**Lensic**  
Performing Arts Center

# SECOND FLOOR DRESSING ROOM DIAGRAM



Catering / Hospitality set up in Green Room  
**WiFi:** Touring Party, **Password:** 211welcome



The  
**Lensic**  
Performing Arts Center

# BASEMENT DRESSING ROOM DIAGRAM

