

ServeNow Presents

PROCESS SERVER *vs* SHERIFF

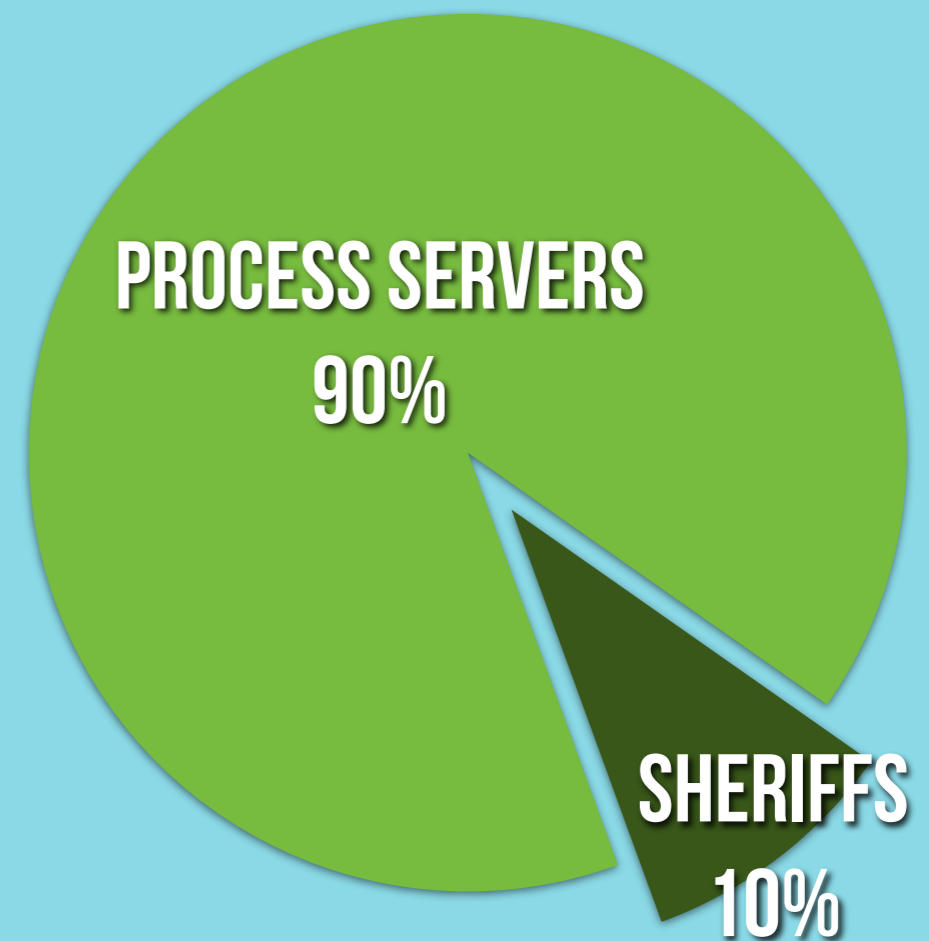
TO SETTLE THE SHOWDOWN BETWEEN PROCESS SERVERS AND SHERIFFS, LEGAL PROFESSIONALS WERE SURVEYED TO DETERMINE WHO IS THE BEST OPTION TO GET PAPERS SERVED.



SPEED *of* SERVICE

WHO SERVES FASTER?

Sheriff's offices have a number of priorities, often leaving process service as one of the last things to do. Sheriffs may take up to 30 days to serve papers depending on their priorities. Process servers frequently take less than one week because their jobs depend on quick, reliable service.



Customer Service

PROCESS SERVERS

4.28 / 5



SHERIFFS

2.55 / 5



Legal professionals rated the customer service of process servers and sheriffs out of 5 stars. The higher rating for process servers tends to be the result of speed and responsiveness.

KNOWLEDGE *of* LAWS

WHO KNOWS THE LOCAL PROCESS SERVING LAWS BETTER?



An important part of process service is making sure that service is done legally. Improper service can lead to:

- **ADDITIONAL COSTS**
- **TIME**
- **DISMISSALS**

AVERAGE NATIONAL COSTS

Process Server

\$53.99

US

Sheriff

\$39.58

- There may be additional fees imposed by sheriffs based on mileage.
- Some sheriffs charge per attempt; whereas process servers will often include multiple attempts.
- Many process servers provide significant discounts for bulk serves.

Success Rate



“Time might be money but a higher certainty is worth both.” - *Unknown*

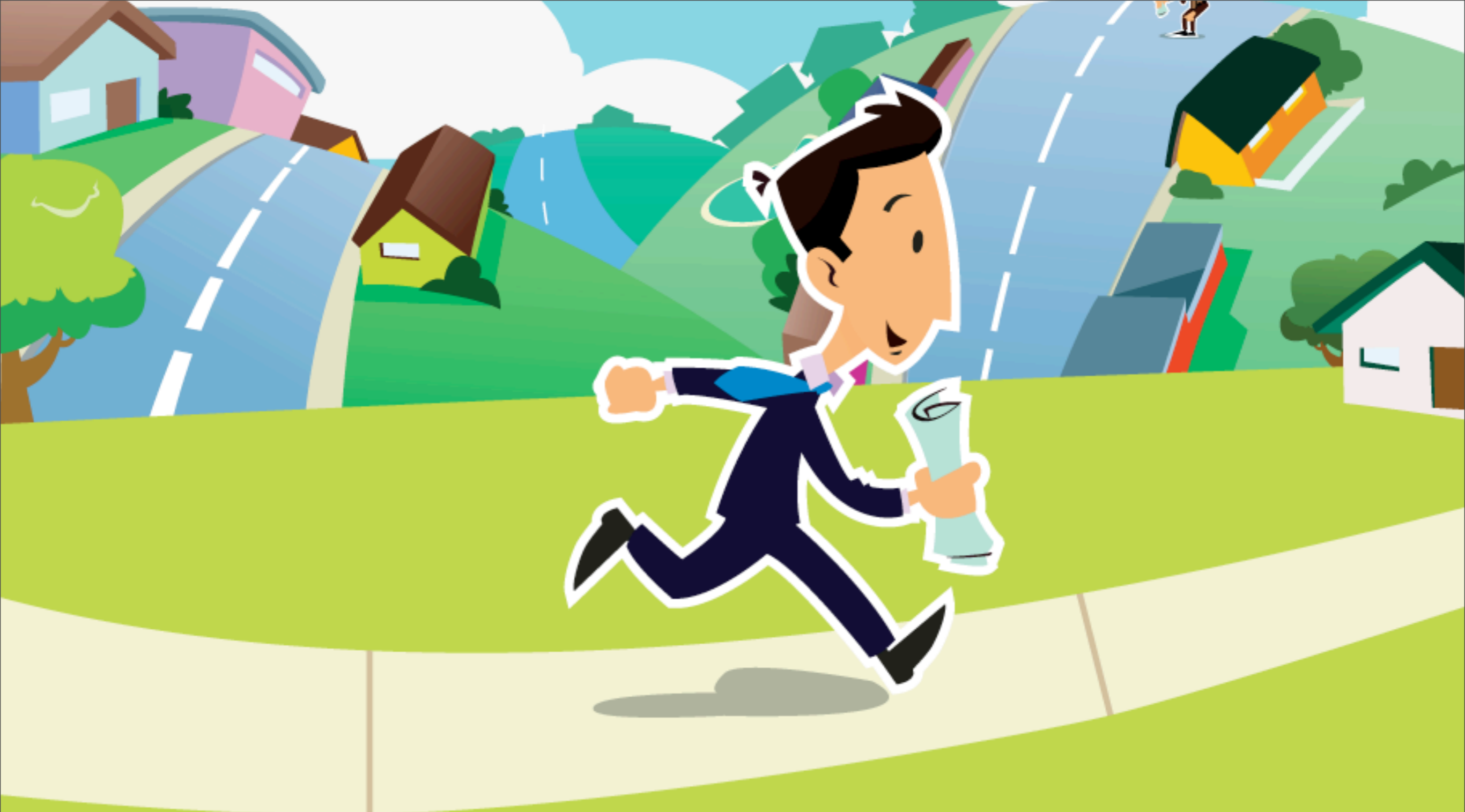
PROCESS SERVERS *are* PREFERRED

While it's probably obvious at this point, legal professionals favored process servers for a number of reasons--their speed, their customer service, and their knowledge of local serving laws. Overall, **78%** of those surveyed preferred process servers.

You should, too.

FOR MORE VERSIONS OF THIS INFOGRAPHIC, PLEASE VISIT:

[HTTP://WWW.SERVE-NOW.COM/ARTICLES/841/PROCESS-SERVER-VS-SHERIFF-INFOGRAPHIC](http://www.serve-now.com/articles/841/process-server-vs-sheriff-infographic)



Sources & Disclaimers

- SERVENOW SURVEYED 100 PARALEGALS, LEGAL ASSISTANTS AND LEGAL SECRETARIES ON THEIR EXPERIENCE USING PROCESS SERVERS AND SHERIFFS FOR SERVICE OF PROCESS.
- PROCESS SERVER PRICING WAS GATHERED FROM OVER 600 PROCESS SERVING FIRMS FROM ACROSS THE UNITED STATES. SHERIFF PRICING WAS COLLECTED FROM PUBLISHED DATA ON COUNTY WEBSITES FROM ALL 50 STATES.
- THERE ARE SCENARIOS THAT EXIST IN MANY STATES WHERE THE SHERIFF (OR A CONSTABLE OR MARSHAL) IS THE ONLY OPTION FOR SERVICE OF PROCESS FOR FIRST ATTEMPTS OR ENFORCEABLE PAPERS SUCH AS WARRANTS.



THE TRUSTED NETWORK OF PROCESS SERVERS
WWW.SERVE-NOW.COM