

# NAVI-PLANNER 4000

A guide to the markets fastest and  
most powerful voyage planning  
and chart management application

# NAVI-PLANNER 4000

Navi-Planner 4000 sets a new standard for safe and efficient voyage planning. This innovative solution from Transas provides a single access point for all information needed by the navigation process at every stage.

During development, Transas worked closely with oil company vetting-inspectors, ship owners and navigation officers to make voyage planning easy for navigators and efficient for ship owners.

Navi-Planner 4000 complies with IMO Resolutions (IMO 1.916(22) Guidelines for the recording of events related to navigation and IMO A.893(21) Guidelines for Voyage Planning).

## NAVI-PLANNER FUNCTIONS

Navi-Planner 4000 is recognized as the ECDIS market's most powerful charts management application, and also boasts a set of databases, applications and services intended for voyage planning. Suitable both onboard as a 'back of the bridge' application, and ashore as a management tool, Navi-Planner 4000 software creates a voyage plan using an electronic route editor. Key features include:

- Port to port planning of a complete voyage plan
- AtoBviaC auto routing
- Under Keel and Over Head Clearance
- Route checking - Reference point selection
- Reporting points - Warnings along the route
- Chart listings for both (S)ENC and paper charts
- Detailed voyage plan reports
- Route export/import from various ECDIS formats
- Integration with Navi-Sailor 4000 ECDIS
- Online correction service for paper charts and publications via TGT Services.





## APPLICATIONS & SERVICES

### AUTO ROUTE WITH AtoBviaC DISTANCE TABLES

'AtoBviaC distance tables' offer a unique and powerful tool for basic route planning. The routes are based on BP Distance Table and can be used for quick distance calculation, chart selection and as a basis for detailed route and voyage planning within Navi-Planner.

### WEATHER FUNCTIONALITY

The Weather Functionality assists the mariner in making the best voyage planning decisions in relation to weather conditions. The data includes air pressure, wind and wave forecasts but also tropical storm forecasts, temperatures, precipitation, ice limits and much more.

### CHART ORDERING & MANAGEMENT

Navi-Planner can either be used for pre-licensing charts or as a Pay as You Sail (PAYS) service. If pre-licensing is used, the selection of charts to order can easily be made by a created route or a route loaded from the Auto Route function. During the preparation of the order a selection of licence period can be made and the approximate cost of the order will be indicated. Once the charts are received and installed, Navi-Planner will display a status report and then synchronise the data to any other workstation within the network.

As this software is type approved and installed in the ECDIS network, there is no need to transfer any data on USB sticks between the communication PC and the ECDIS on the bridge. If PAYS is used, a licence holding all available PAYS SENCs/ENCs is generated and only charts that have been used for navigation will be charged.

### CORRECTION & MANAGEMENT

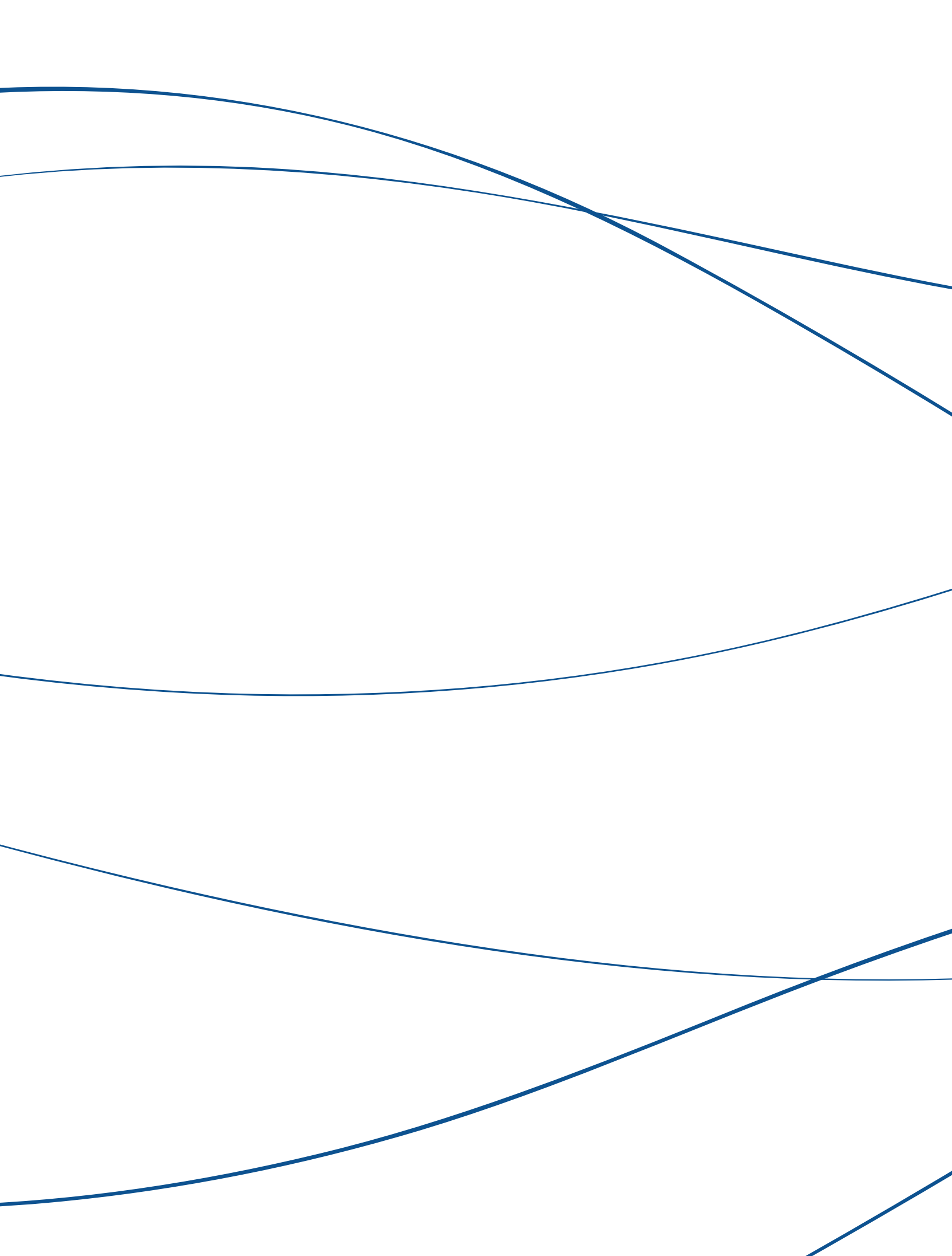
As part of the chart management functionality in Navi-Planner, chart corrections can be ordered, installed and recorded both for (S)ENCs and paper charts. It is imperative for the Master to always maintain full control and overview of the vessel's chart holdings and to show them to authorities and inspectors.

Navi-Planner is capable of everything from basic and simple route creation to full 'track control level C' planning, as well as route checking and 'Under Keel Clearance' (UKC) calculations based on set ships and safety parameters.



The background of the image features several smooth, flowing blue lines that originate from the left edge and curve towards the right. These lines vary in thickness and curvature, creating a sense of movement and depth. The lines are a deep blue color, contrasting with the plain white background.

**IT'S SO EASY...**



# SEE JUST HOW EASY IT IS...

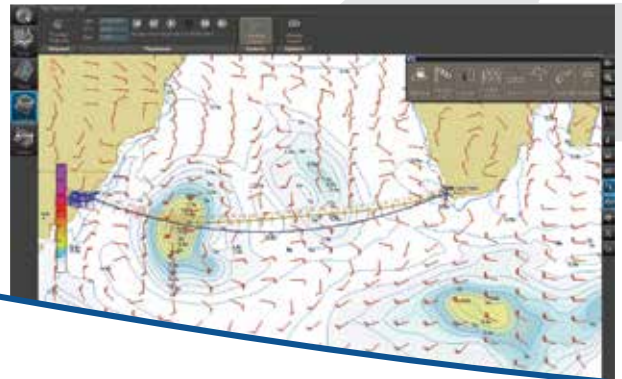
# 1



## ROUTE CREATION

Start the planning by creating a route. The Auto route functionality will assist you with a ready route from port to port within seconds.

# 2



## WEATHER ROUTING

Let the Navi-Planner 4000 optimise the route based on predicted weather along your scheduled route.

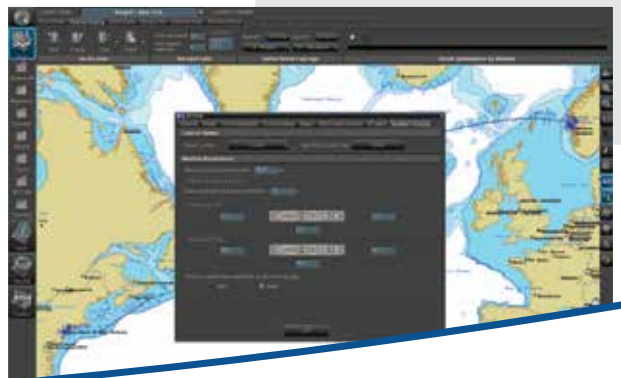
3



## CHART ADMIN

You're in control with all the charts and updates required for the intended voyage, with just a few clicks within the program.

4



## FINE TUNE & ADJUST

Now that you have all the charts, updates and a weather-optimised route, don't forget to adjust your route for navigational hazards and traffic separation schemes etc.

5

6



## **CHECK ROUTE/ SCHEDULE CALCULATION**

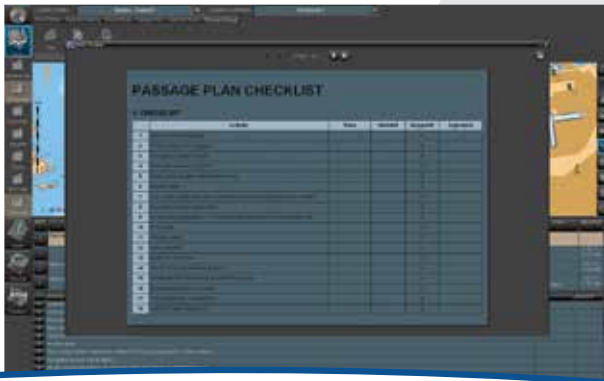
Run the check route and let the program point out any potential danger along your route. Go through and correct the alarms one by one; it couldn't be simpler.

## **MAPS/ ADDITIONAL INFO**

Use the various overlays available to add and present additional information on the charts.



7



8



## DATA COLLECTION/ CHECK LISTS

Let the program collect the data for your voyage, such as Under Keel Clearance, weather and charts, and present this in the passage plan report.

You can also create checklists for use during the voyage.

## PRINT REPORTS

## WHY CHOOSE NAVI-PLANNER 4000?

- The market's fastest and most powerful chart management application
- Everything you need for voyage planning and navigation management
- Digital services managed in one application
- Built-in paper chart and publication corrections
- Full voyage planning, port-to-port and berth-to-berth
- Developed through co-operation with customers and authorities
- Made to support ISM procedures and bridge administration
- Type-approved and can be part of the ECDIS network.

"I have worked with Navi-Planner for over a year now and I am more than pleased with the product. The menus and layouts are outstanding in comparison with other similar products. It is user-friendly and makes route planning easier than before.

When we are heading to a new destination I use the auto-route function and it gives me a good general view of the route in and out of the new harbours. The copy, cut and paste function is great, especially when working with waypoints and text files. Another thing that makes my job easier is the AIO layer, it is excellent.

I would definitely recommend Navi-Planner to all other seafarers out there. The program is easy to use and if there would ever be a problem the Transas support is great."



Daniella Andersson  
2<sup>nd</sup> Officer M/T Alcedo  
Crew Chart Shipmanagement

## FAQ

### **CAN NAVI-PLANNER 4000 BE USED WITHOUT TRANSAS NAVI-SAILOR ECDIS?**

Yes, the Navi-Planner 4000 can either operate as part of the Transas ECDIS network or as a stand-alone application, typically used onboard vessels running other brands of ECDIS.

### **WILL THE PASSAGE PLAN FOLLOW IMO GUIDELINES AND BE ACCEPTED BY OCIMF\*?**

Yes, it will. The Navi-Planner 4000 was created from the point that it should fulfill the IMO Guidelines and the OCIMF recommendations.

### **IS NAVI-PLANNER 4000 REALLY FREE OF CHARGE?**

Yes, the Basic Navi-Planner 4000 is free of charge.

### **IS IT POSSIBLE TO IMPORT/EXPORT ROUTE FORMATS TO/FROM OTHER ECDISs THAN TRANSAS NAVI-SAILOR ECDIS?**

Yes, the Navi-Planner 4000 can handle the route formats for import/export within ECDIS systems from the most common manufacturers. New formats are added to the list constantly.

### **CAN THE NAVI-PLANNER 4000 PRESENT THE STATUS OF ALL MY CHARTS ALONG THE ROUTE, BOTH ELECTRONIC AND ON PAPER?**

Yes, it is capable of handling updates for electronic as well as paper charts, and it's easy to generate a report of the status for all charts used for the voyage.

\*OCIMF- Oil Companies International Marine Forum

"We have been using Navi-Planner for the past two years on our vessels Mid Fighter and Hegren. For office work Navi-Planner helps us in several ways, not only by the easy route planning but also with route checking. The vessel can send us an Excel sheet with waypoints and we can easily import this into Navi-Planner and check the route. On the vessel the human errors have basically been eliminated and the more the crew becomes adapted to ECDIS and Navi-Planner it becomes a part of their everyday life. We would certainly like to recommend the use of Navi-Planner to all seafarers. It is a fabulous system created to make life on board sweet and simple."

Capt. Subramanyam  
Fleet Management Singapore



# A global network for local needs



© 2013 Transas MIP Ltd. All rights reserved. RefNo. 9005203

## **GLOBAL**

Transas Marine International. Phone: +46 31 769 56 00. E-mail: [info@transas.com](mailto:info@transas.com)

## **ASIA PACIFIC**

Transas Marine Pacific Pte Ltd. (Singapore). Phone: +65 627 10 200. E-mail: [info.asia@transas.com](mailto:info.asia@transas.com)

Transas China. Phone: +86 21 3329 6750. E-mail: [info.china@transas.com](mailto:info.china@transas.com)

Transas Hong Kong Ltd. Phone: +852 281 516 03. E-mail: [info@transas.com.hk](mailto:info@transas.com.hk)

## **MIDDLE EAST**

Transas Middle East (the U.A.E.). Phone: +97 14 357 3625. E-mail: [tme@transas.com](mailto:tme@transas.com)

## **AMERICAS**

Transas USA Inc. Phone: +1425 486 2100. E-mail: [sales@transasusa.com](mailto:sales@transasusa.com)

Transas Latin America (Argentina). Phone: +54 11 4790 8569. E-mail: [latam@transasusa.com](mailto:latam@transasusa.com)

## **MEDITERRANEAN**

Transas Mediterranean SAS (France). Phone: +33 4 89 86 4100. E-mail: [med-sales@transas.com](mailto:med-sales@transas.com)

## **EUROPE**

Transas Marine GmbH (Germany). Phone: +49 40 890 6660. E-mail: [info@transas.de](mailto:info@transas.de)

Transas Scandinavia (Sweden). Phone: +46 31 769 56 00. E-mail: [sales@transas.se](mailto:sales@transas.se)

Transas Marine (UK) Ltd. Phone: +44 2392 674 000. E-mail: [trn@transas.com](mailto:trn@transas.com)

Transas Benelux (the Netherlands). Phone: +31 10 4285599. E-mail: [benelux@transas.com](mailto:benelux@transas.com)

Transas Hellas Ltd. (Greece). Phone: +30 210 899 5164. E-mail: [hellas@transas.com](mailto:hellas@transas.com)

Transas Black Sea (Turkey). Phone: +90 216 337 0852. E-mail: [blacksea@transas.com](mailto:blacksea@transas.com)

Transas Ukraine Ltd. Phone: +380 512 507116. E-mail: [blacksea@transas.com](mailto:blacksea@transas.com)

Transas Norway. Phone: +47 91 70 5060. E-mail: [sales@transas.no](mailto:sales@transas.no)

Transas Marine Poland. Phone: +48 58 774 7283. E-mail: [sales@transas.de](mailto:sales@transas.de)

Transas Baltic SIA (Latvia). Phone: +371 6 716 2100. E-mail: [baltic@transas.com](mailto:baltic@transas.com)

## **RUSSIA & CIS**

Transas Navigator (Russia). Phone: +7 812 325 31 31. E-mail: [trn@transas.com](mailto:trn@transas.com)

## **OTHER COUNTRIES**

Find your local dealer at [www.transas.com/dealers](http://www.transas.com/dealers)

