



## BVS 7 for On-board and Around-the-Clock Optimum Ship-Routing Information

AWT's Bon Voyage System (BVS) is an easy to use graphical marine voyage optimization system that provides on-board and around-the-clock weather-routing information. This sophisticated yet user-friendly system is both comprehensive and cost effective, making it an indispensable route-planning tool.

### Voyage Optimization

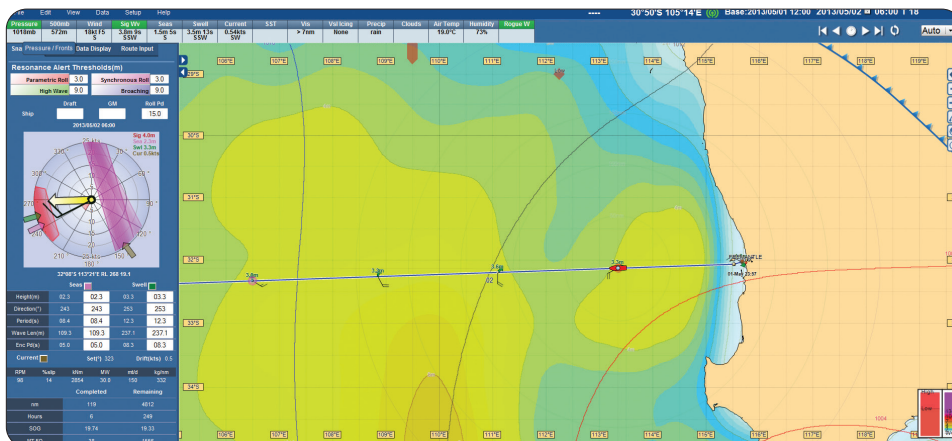
#### Calculate Least Time, Fuel or Cost

Using your on-board computer, BVS provides the most recent weather and ocean data to the ship by broadband or email communications in a highly compressed format to minimize communication costs. This data is then used to generate color-enhanced maps and graphics that allow the ship's captain to easily view and interpret potential problem areas in advance.

BVS has an improved optimization algorithm along with customizable speed down and consumption curves that deliver more accurate estimates of fuel cost and time en-route. Both weather induced constraints and no-go zones can be set to account for the special requirements of each particular voyage.

*“BVS is a helpful tool in route planning and in enhancing ship’s safety by avoiding bad weather conditions. And in the midst of skyrocketing oil prices, BVS is a big aid in saving bunkers.”*

*– Capt. Chou Chi Tang,  
The Cape Australia,  
U-Ming Marine  
Transport Corporation*



BVS 7 resonance alert tool gives captains information to minimize the potential for severe motions.



### BVS Now Integrated with UKHO's ADMIRALTY e-Navigator and ChartCo's Passage Manager™

BVS now has the capability of interchanging track waypoints with the ADMIRALTY e-Navigator and ChartCo's Passage Manager. This new capability makes passage planning much easier. Users can now employ the BVS system to strategically optimize a voyage then seamlessly display the track in e-Navigator or Passage Manager to validate that a vessel has all the required charts and nautical publications on board and up-to-date. Once the track has been processed in e-Navigator or Passage Manager, it can be passed to the onboard ECDIS system to confirm that the track is navigationally safe.

### High Confidence Forecasts

#### Accurately Calculate Speed Loss to Get a More Accurate ETA

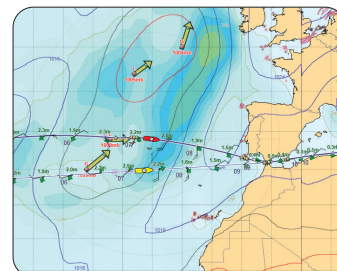
Climatological Ship Resistance (CSR) is AWT's proprietary model that provides higher confidence forecasts for voyages over 10 days, enabling the ship's master to plan short or long term route strategies with the best possible balance of safety and fuel efficiency.

#### Maximize Fuel Savings with BVS 7

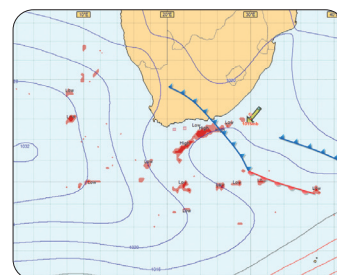
- High-resolution wind and wave data provides better simulation and optimization results to improve route plans
- Improved voyage optimization allows captains to optimize their voyage based on various constraints to find the least cost route
- AWT's proprietary Climatological Ship Resistance model gives an accurate prediction of speed loss delivering more accurate ETA's
- Ship-specific speed down and consumption curves enable more accurate forecasts of specific vessel consumption

#### Improve Safety with BVS 7

- High-resolution wind and wave data allows ship captains to take advantage of small variations in wind and wave data to make safer route plans
- Frequent access to detailed port vicinity forecasts
- Improved voyage optimization now shows traffic separation lanes
- Updated pirate attack information includes all information reported to International Maritime Bureau (IMB) and supplemented with NATO reports
- 72 hour rogue wave forecasts of the areas where a freak wave is most likely to occur
- HYCOM current data available daily with tidal streams
- Resonance alerts displays warning symbols to guide the captain to the safest route, providing an indication on which headings and/or speeds can be used to avoid these areas, thereby minimizing the potential of heavy-weather damage
- Delivery of data through broadband with the 16 day forecast updated four times per day and other parameters such as pirate attack information, port vicinity forecasts, satellite imagery and high seas bulletins delivered near real-time



BVS 7 helps captains evaluate potential time and fuel savings with an optimized track.



Rogue wave forecast off South Africa.

[www.awtworldwide.com](http://www.awtworldwide.com)

**AWT Worldwide**  
Headquarters  
140 Kifer Court  
Sunnyvale, CA 94086  
U.S.A.  
T: +1 408 731 8600  
F: +1 408 731 8601

**AWT New Jersey**  
T: +1 609 275 5488  
F: +1 609 750 9793

**AWT Singapore**  
T: +65 6224 7068

**AWT Shanghai**  
T: +86 21 6334 6088  
F: +86 21 6334 6085

**AWT Japan**  
T: +81 3 5211 5652  
F: +81 3 5211 5653

**AWT Europe**  
T: +44 1224 857920  
F: +44 1224 582168

**AWT Germany**  
T: +49 4182 287 132  
F: +49 4182 287 133

**AWT Korea 1**  
T: +82 2 739 3464  
F: +82 2 739 3404

**AWT Korea 2**  
T: +82 2 737 7007  
F: +82 2 737 8521

**AWT Hong Kong**  
T: +852 2865 0282  
F: +852 2865 0228

**AWT London**  
T: +44 (0)20 3178 8356  
F: +44 (0)12 2458 2168