

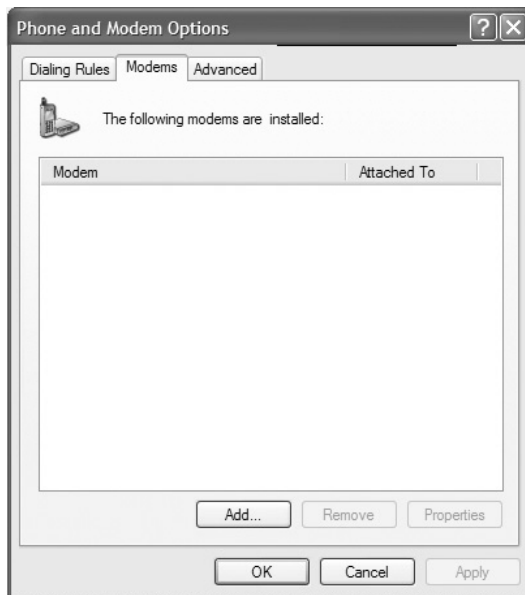
# Configuring a Windows® XP Modem for MPDS

When connected to a properly configured TracPhone® F33/F55/F77 system, your PC can access the Internet via Inmarsat's Fleet MPDS (Mobile Packet Data Service) network. These instructions explain how to configure a Windows XP computer for MPDS.

## Configuring the Modem

To configure your Windows XP modem for MPDS, follow the steps below.

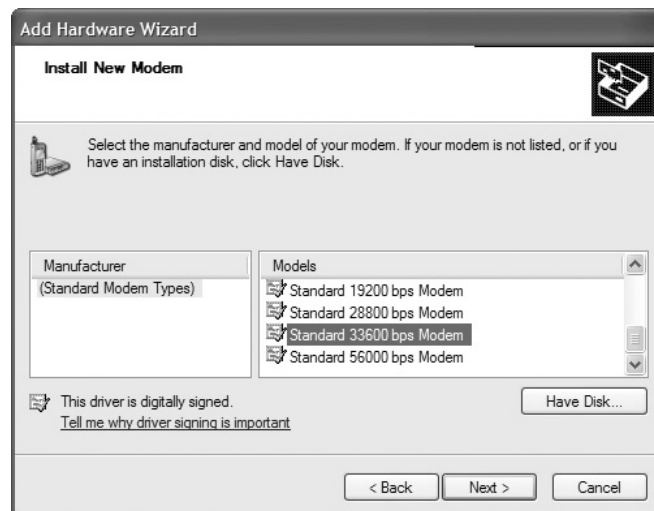
1. Connect one end of a serial data cable to your PC's COM port. Connect the other end to the RS-232 port on the TracPhone F33 Transceiver Unit or the TracPhone F55/F77 BDU (Below-decks Unit).
2. Select the Control Panel from your PC's Start menu.
3. Double-click the **Phone and Modem Options** icon.
4. Select the Modems tab. Then click the **Add** button.



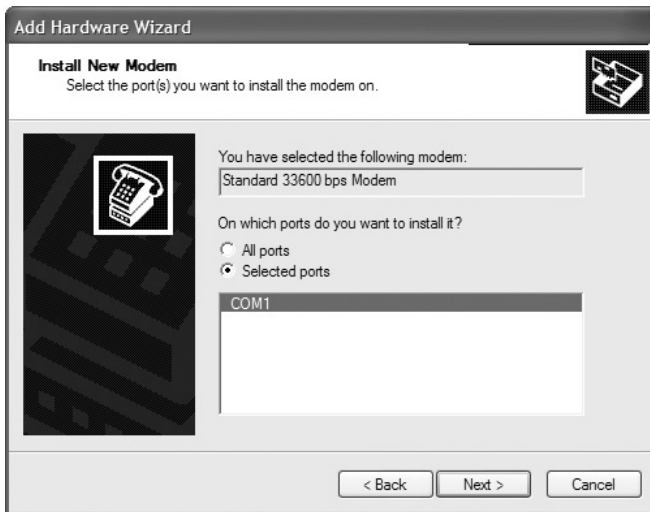
5. Select (*check*) “Don’t detect my modem; I will select it from a list.” Then click the **Next** button.



6. From the Manufacturer list, select “(Standard Modem Types).” From the Models list, select “Standard 33600 bps Modem.” Then click the **Next** button.



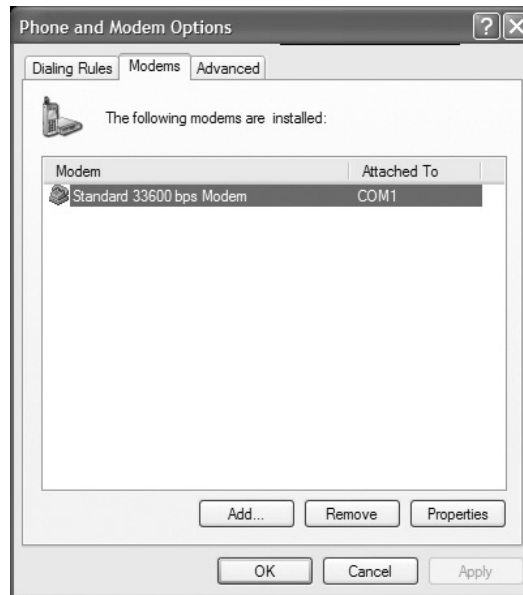
7. Select the communications (COM) port that you connected to the TracPhone F33/F55/F77. Then click the **Next** button.



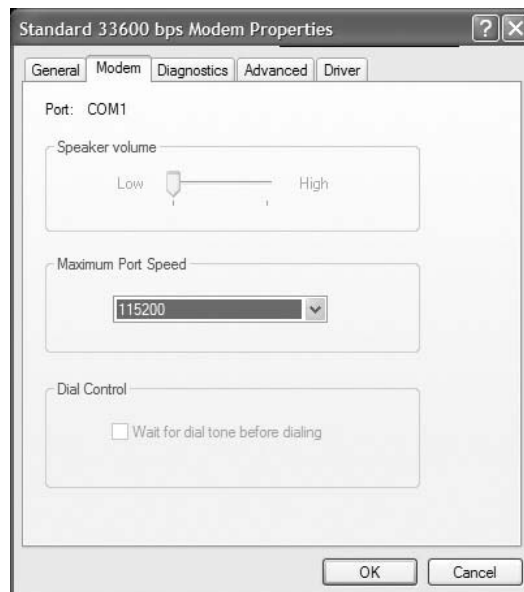
8. Windows should report "Your modem has been set up successfully." Click the **Finish** button.

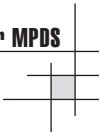


- At the Phone and Modem Options window, select the "Standard 33600 bps Modem." Then click the **Properties** button.

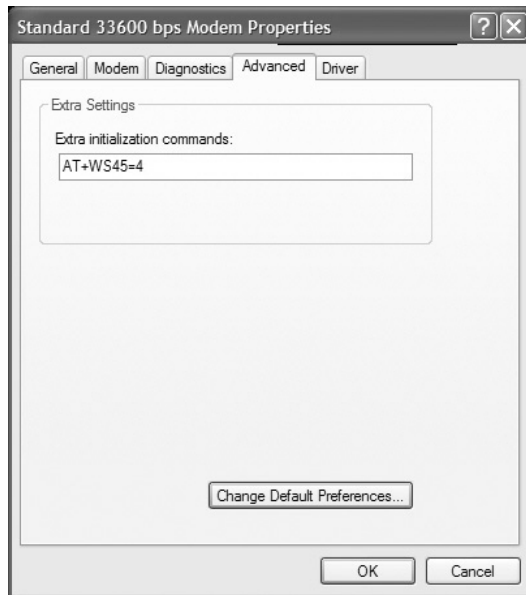


- Select the Modem tab. From the Maximum Port Speed drop-down menu, select "115200."





11. Select the Advanced tab. In the Extra Initialization Commands box, enter **AT+WS45=4**. Then click the **OK** button.



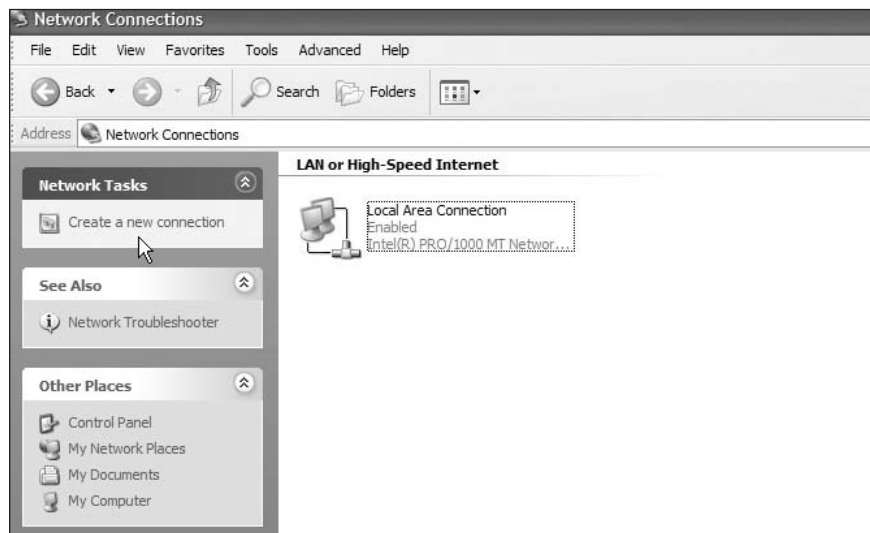
12. Click the **OK** button to close the Phone and Modem Options window.

# Setting Up the Modem Connection

Now that you've configured the modem, follow the steps below to set up a connection for that modem.

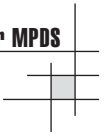


1. At the Control Panel, double-click the **Network Connections** icon.
2. From the Network Connections window, click **Create a new connection**.



3. New Connection Wizard: Click the **Next** button.





4. Network Connection Type: Select “Connect to the Internet.” Then click the Next button.



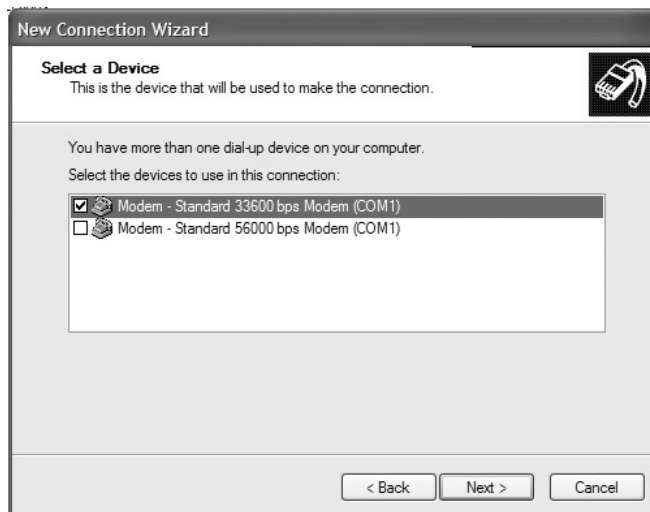
5. Getting Ready: Select “Set up my connection manually.” Then click the Next button.

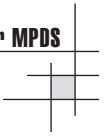


6. Internet Connection: Select “Connect using a dial-up modem.” Then click the **Next** button.



7. Select a Device: Select (*check*) the modem you configured in the previous section: “Standard 33600 bps Modem.” Deselect (*uncheck*) all other modem options. With “Standard 33600 bps Modem” highlighted, click the **Next** button.





8. **Connection Name:** In the ISP Name box, enter a name for your connection (e.g., **MPDS**). Then click the **Next** button.

The screenshot shows the 'New Connection Wizard' dialog box. The title bar reads 'New Connection Wizard'. The main heading is 'Connection Name' with a sub-question: 'What is the name of the service that provides your Internet connection?'. To the right is a modem icon. Below the heading, it says 'Type the name of your ISP in the following box.' and 'ISP Name'. A text input field contains 'MPDS'. Below the field, it says 'The name you type here will be the name of the connection you are creating.' At the bottom are three buttons: '< Back', 'Next >', and 'Cancel'.

9. **Phone Number to Dial:** In the Phone Number box, enter **1234#**. Then click the **Next** button.

The screenshot shows the 'New Connection Wizard' dialog box. The title bar reads 'New Connection Wizard'. The main heading is 'Phone Number to Dial' with a sub-question: 'What is your ISP's phone number?'. To the right is a modem icon. Below the heading, it says 'Type the phone number below.' and 'Phone number:'. A text input field contains '1234#'. Below the field, it says 'You might need to include a "1" or the area code, or both. If you are not sure you need the extra numbers, dial the phone number on your telephone. If you hear a modem sound, the number dialed is correct.' At the bottom are three buttons: '< Back', 'Next >', and 'Cancel'.

10. *The Connection Availability window might not appear, depending on your PC's configuration. If it does not appear, simply skip to step 11.*

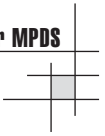
Connection Availability: Select the desired option. Then click the **Next** button.

*If you want the MPDS connection to be available to anyone with access to the PC, select "Anyone's use." If you want the connection to be available only to you, select "My use only."*



*If you did not receive a user name and password when you activated your system through KVH, please contact the KVH Activation Department at +1 888 584-4163.*

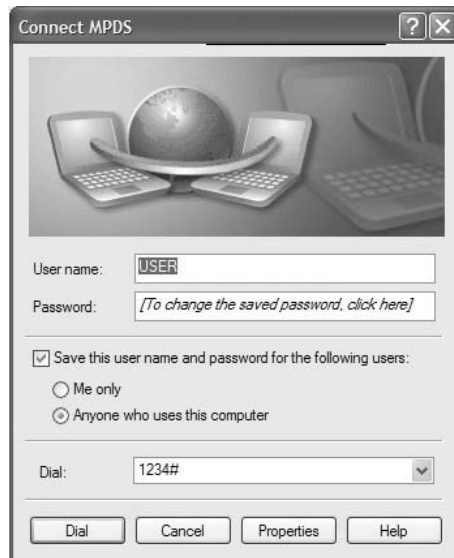
11. **Internet Account Information:** Enter the User name and Password assigned to you by KVH. Deselect (*uncheck*) all other options. Then click the **Next** button.



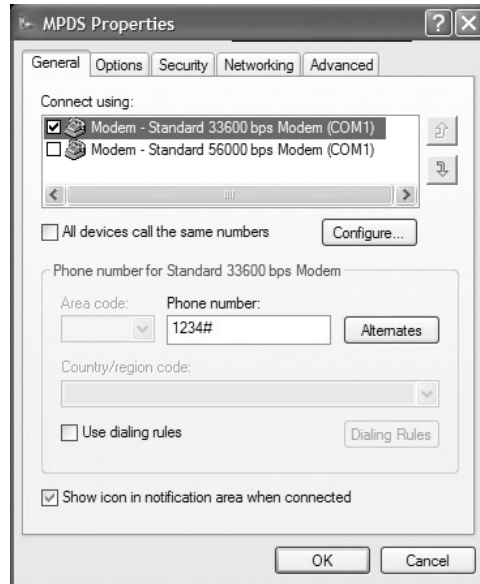
12. Select “Add a shortcut to this connection to my desktop.” Then click the **Finish** button.



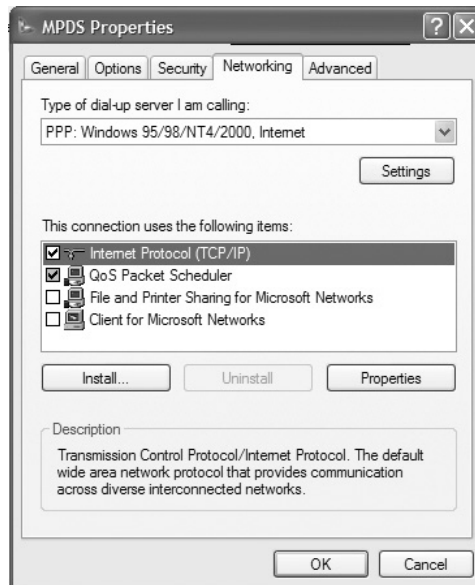
13. At the Connect window, click the **Properties** button.

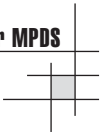


14. At the General tab, deselect (*uncheck*) “All devices call the same numbers” and deselect (*uncheck*) “Use dialing rules.” Select (*check*) “Show icon in notification area when connected.”



15. At the Networking tab, verify that the type of dial-up server is “PPP: Windows 95/98/NT4/2000, Internet.” Select (*check*) “Internet Protocol (TCP/IP)” and select (*check*) “QoS Packet Scheduler.” Then click the **OK** button.





16. If your TracPhone F33/F55/F77 is set up properly, as described in the *User's Guide*, you can now connect to the MPDS network by clicking the **Dial** button.



## Optimizing the Connection

With an MPDS connection, you are only charged for the actual data that is sent and received. It does not matter how long you are connected. Therefore, minimizing the amount of data that you send and receive is essential to keeping usage costs down.

### Tips on Minimizing Data Transfer

- Choose data formats carefully. Many desktop applications create large output files. Could another, simpler format be used instead?
- Compress data. Zip all documents/files that you need to send and receive.
- Check your application configurations to ensure extra data is not being sent and received. For example, e-mail applications do not need to append signatures or send delivery reports.
- Ensure that all unnecessary network applications are stopped when not in use. For example, new “ticker tape,” instant messaging, and some e-mail applications can generate unwanted traffic.

### Monitoring Traffic

If you are aware of the traffic being sent and received by your PC, you will be able to identify which applications are generating the most traffic, and which are generating totally unwanted traffic. You then may want to configure those applications differently or change the way they operate.

A simple way of monitoring your connection, while you’re connected, is to check the bytes sent and received, which you can find under the Dial-up Networking Statistics window available from the system tray icon’s Properties.

In addition, Inmarsat provides tools that can help you monitor traffic: **IP Consultant** and **Cost Comparison Tool**. **DUmeter** is another shareware monitoring tool.