

# KOSTER INDUSTRIES ONLINE ONLY AUCTION

AUCTIONEERS • APPRAISERS • LIQUIDATORS

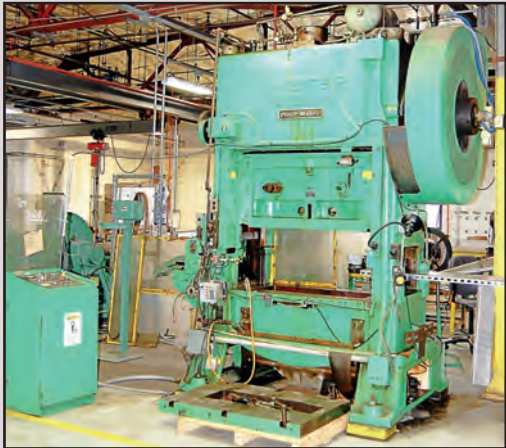
## Surplus to the Needs of **MAGNETIC METALS**

1900 Hayes Avenue  
Camden, New Jersey 08105

### FEATURING: MINSTER HIGH SPEED PRESSES

- Up to 100-Ton • 30-TON GASBARRE HIGH SPEED PRESS • 2007 MAZAK LASER
- STRAIGHTENERS & UNCOILERS
- PASS-THRU BELT FURNACES & DRYING

OVEN'S • OBI PRESSES • SIP JIG BORER • PARKER MAJESTIC GRINDERS • SHOP SUPPORT, ETC.



**LASER:** 2007 1,300-Watt Mazak "Champion" Super Turbo-X48 Laser, travels: X-105.7", Y-50", Z-3.9", 98.4" x 49.2" x .047" Work Size • **HIGH SPEED PRESSES:** 100-Ton Minster Mdl. P2-100-48 "Piece-Maker"; 75-Ton Minster Mdl. PM3-75-42; 60-Ton Minster Mdl. P2-60-36; 60-Ton Minster Mdl. P2-60-36 "Piece-Maker"; 60-Ton Minster Mdl. P2-60 "Piece-Maker"; 30-Ton Gasbarre Mdl. VGS, 100-1200 SPM; 30-Ton Bruderer "BSTA 30" 3-Post High Speed Press, with PA Industries "The Edge" 2-1/2" Mdl. HPF-60 Servo Roll Feed; 30-Ton Minster Mdl. P2-30 "Piecemaker"; 30-Ton Minster Mdl. P2-30-24 "Piecemaker"; 30-Ton Minster Mdl. P2-30-24 "Piecemaker" High Speed Press, PA Industries "Ultra Edge" Mdl. SRF-100ULTRA Servo Roll Feed; 25-Ton Bruderer Mdl. "BSTA 25" High Speed Press; 10-Ton (Approximately) Henry & Wright 4-Post High Speed Press with PA Industries SRF-1000 "Ultra Edge" Servo Feed; 10-Ton Bruderer Mdl. 10L Mini 4-Post High Speed Press, (2) 4-Post High Speed Press, 28" x 36" T-Slotted Bolster, 4-Cylinder, 13" x 13" Between Posts, *One New In Box!* • **OBI PUNCH PRESSES:** 35-Ton Niagara Mdl. M35 OBI; 22-Ton Minster #3 OBI Flywheel; 15-Ton Roussele #2E Air Clutch Flywheel • **AUXILIARY PRESS EQUIPMENT:** Large Assortment of Cooper Weymouth Petersen Stock Straighteners – Up to 15", Bruderer 12-120/10-12 Straightener, Numerous Norwalk "Innovator" Motorized Uncoilers, 4,000-Lb. Littell Mdl. 40-18 Auto Centering Reel • **OVENS & BELT PASS-THRU FURNACES:** Pollution Controlled Products Mdl. DC-3A-5363 Burn Off Furnace, Natural Gas, Honeywell Digital Controls, 350,000 BTU, 41" Wide x 44" High x 48" Deep Approximate Inside Dimensions; 12" Sargeant & Wilbur Mdl. B1C-131342-S Pass Thru Belt Furnace, 7-Zone, Approximately 42' Long, Digital Controls; 12" B/U Engineering "Transaheat" Mdl. THR126-3-108E-4 Pass Thru Belt Furnace, 4-Zone, Approximately 38' Long, 7" Lindberg Pass Thru Belt Furnace, 3-Zone, Digital Temperature Controls • **HYDRAULIC C-FRAME PRESS:** 6-Ton Greenerd Mdl. HPB-5 Hydraulic C-Frame Press • **BELT SANDER:** 24" Timesaver Mdl. 125-1M Vertical Belt Sander • **CUT-OFFS & ROLL FORMING:** 3" Cut-Off, 3" Rapid-Air Feed, Pneumatic; 12" Rapid-Air Mdl. FSC12 Cut-Off, S/N: 124967, Mdl. L16E Slide Feed, S/N: 127680, Pneumatic; 4-Stand Bench Type Roll Former, Approximately 1-1/2" Roll Space, Pneumatic Cut-Off and Slide Feed • **TOOLROOM:** SIP Mdl. "Hydroptic-6A" Vertical Jig Borer, (5) 6" x 18" Parker Majestic Hand Feed and Power Feed Surface Grinders; 14" x 40" Brown & Sharpe #3 Cylindrical Grinder • **HEAT SHRINK TUNNEL:** Clamco Mdl. 851 Heat Shrink Tunnel, 15" Wide, Entry Conveyor, Clamco Mdl. 5124 Sealer • **INSPECTION:** 30" Jones & Lamson "Epic 30" Comparator, Wilson Rockwell Mdl. 4JR Hardness Tester • **MISCELLANEOUS MACHINERY & SUPPORT EQUIPMENT:** 1-Ton and 2-Ton Floor Type Jib Cranes, Vulcan Mdl. 3-550 Bench Furnace, Tranco Mdl. 20/CDB Reach-In Shot Blast Cabinet, 11" x 11" Advanced Rotary Table, (2) Lexco Heavy Duty Die Lift Carts, 1,000-Lb. Presto Mdl. M-66 Die Lift Cart, 1,000-Lb. Presto Mdl. H166 Die Lift Cart, 7" Siquorney Sensitive Bench Drill, Tennsmith Mdl. SR24 20Ga. x 24" Sheet Metal Roller, 18" x 12" Motorized Conveyor, Mdl. 14511 5" Motorized Incline Conveyor, Power Strapping Machine • **Miscellaneous Items**

**Throughout:** Incl.: Assorted Inspection Items, Rolling Carts, Scales, Wood Top Work Benches, Rolling Wire Racks, Pallet Jacks, Bench Vises, Drill Cabinets, Double Door Storage Cabinets, Radius Dressers, Rotary Tables, Sine Plates, Dumore Grinders, Demag Units, Indexers, 6" Bench Shear, Rolling Tool Cabinets, Etc.



BUYER'S PREMIUM WILL APPLY

VISIT OUR WEBSITE FOR TERMS OF SALE, PHOTOS & MORE INFO

**ONLINE BIDDING CLOSES: Tuesday May 22nd, 2018 at 1:00 p.m. EDT**

ONE DAY ONSITE INSPECTION: Monday, May 21st from 8:00 a.m. to 4:00 p.m.

**KOSTER INDUSTRIES**  
AUCTIONEERS • APPRAISERS • LIQUIDATORS

Corporate Office:  
40 Daniel Street-Suite 2  
Farmingdale, NY 11735  
631-454-1766 • Fax: 631-454-1779  
Boston Office:  
978-474-4442 • Fax: 978-474-4673



Online Bidding Through

**BidSpotter.com**

Live Interactive Webcast Auctions

www.kosterindustries.com • e-mail: info@kosterindustries.com