

FRANK MORROW COMPANY

Creative Ideas in Metals for Over 90 Years

129 Baker Street Providence, Rhode Island 02905

Real Estate is Available – See Website for Details



HIGHLIGHTS: (10) Straight Side Presses Incl. 1983 250-Ton Haulick-Roos, Brown & Boggs, L&J, Perkins – up to 250-Ton Air Clutch • Over (11) OBI & Non-Inclinable Presses Incl. V&O, Perkins, Bliss – up to 45-Ton • Lubow AR-250 & RR-15 Ring Rollers • 2-HI Rolling Mills • Tube Channel Former • Fabricating & Sheet Metal Equipment • Toolroom Machinery & EDM's • Material Handling • Plus Much More!

Thousands of Dies to Produce Decorative Banding and Pierced Embossed Galleries from 1/2"–12" wide. Metal Flowers and Leaves of All Types. Figurative Stampings: Birds, Animals, Sea Life, Butterflies, Etc. Medallions, Rosettes, Bobeches, Table Edging; Etc.

Visit www.frankmorrow.com to View Stampings and Bandings in More Detail – Highly Recommend to Inspect in Person to See the High Quality and Craftsmanship. The Last Company in the US to Manufacture Decorative Banding.

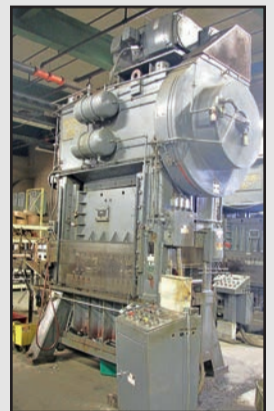


Can't attend this auction?

Bid online at BidSpotter.com

Live Interactive Webcast Auctions

STRAIGHT SIDE PRESSES: 250-Ton Haulick-Roos, 20–100mm (0.787"–3.93") adjustable str., 0–100mm (0–3.93") ram adj., 59" x 48" T-slotted bolster, vari-speed, air clutch, spare segmented bolster blocks, (1983); 200-Ton Brown & Boggs Mdl. SC2-200-48-42, 4" str., 18" SH, 40–100 SPM, vari-speed, 48" x 42" T-slotted bolster, 24" Servomax SMXSE-24 feed; 150-Ton L&J "Press Master" Mdl. PM2-150-54-36, approx. 1-1/2" str., vari-speed, air clutch, power ram adj., T-slotted bolster, 54" x 36" bed area; 150-Ton Perkins Mdl. 150-T, 1-1/2" str., 10-1/2" SH, 4" ram adj., 48" x 40" bed, T-slotted bolster, motorized ram adj., air clutch; 100-Ton Perkins Mdl. 100-T, 1-1/2" stroke, 4" ram adj., 34" x 42" bed, 10" SH, T-slotted bolster, vari-speed, air clutch, motorized ram adj., approx. 300 SPM; (3) 75-Ton Perkins Mdl. 75-T, 1-1/2" str., 4" ram adj., 10-1/2" SH, 32" x 36" bed, air clutch, motorized ram adj., air feed unit; 60-Ton Perkins Mdl. 60-T, 1-1/2" str., 4" ram adj., 10-1/2" SH, motorized ram adj., 36" x 23" bed, T-slotted ram, approx., 300 SPM, air clutch; 50-Ton L&J "Press Master" Mdl. PM1-50-20-20, 2" str., 2" ram adj., 14" SH, 20" x 20" bed, 6" roll feed, vari-speed • **OBI & NON-INCLINABLE FLYWHEEL PRESSES:** 30-Ton Bliss Mdl. 20-M Air Clutch, vari-speed, 30-Ton (approx.) V&O air clutch, vari-speed; 28-Ton Perkins Mdl. 375-B, 2-1/2" str., 2-1/2" ram adj., 7-3/4" SH, 11-3/4" x 22" bed area; (3) 22-Ton Bliss #19-1/2 OBI, 2-1/2" str.; 18-Ton L&J #18 A/C, OBI, 3/4" str., 2" ram adj., 8-3/4" SH, 18" x 11-1/2" bed area, vari-speed; 15-Ton Perkins Mdl. 15-S A/C, 3/4" str., 6" SH, 2" ram adj., 10" x 20" bed, vari-speed; 12-Ton Alva Allen Mdl. BT-12 A/C, OBI, 10-Ton Perkins #2A A/C, non-inclinable, 1/2" str., 3/4" SH, 7-1/2" x 12" bed, vari-speed; (2) 10-Ton Perkins #2A Mech., 2" str., 3/4" ram adj., 6" SH, 12" x 7" bed; (2) 5-Ton Perkins #1A Deep Throat Mech., 1-1/2" str.; Pexto Mdl. 76-A Wide Bed Mech/Flywheel-Type, 12" x 30-1/2" bed (used for die tryout) • **ALSO AVAILABLE:** Jaco Mdl. JDRE-3024-DC Double End Motorized Uncoiler; (10) Jaco Motorized Stock Reels; 1,800-Lb. Durant Mdl. VS-XL1816M Motorized Stock Reel; 24" Cooper Weymouth 7-Roll Straightener • **2-HI ROLLING MILLS:** 4" x 8" (approx.) Fenn Mdl. 053 2-Hi Rolling Mill (used for banding), pre-form roll attachment, vari-speed, control console, approx. 300 FPM, S/N: 51110; 3" x 8" Fenn 2-Hi Rolling Mill (used for banding), pre-form roll attachment, vari-speed control, stand-up console, S/N: 65; 2-Hi Embossing Mill (for leaf pattern) • **SLITTER:** Standard Single End 3HP Slitter, vari-speed, approx. 11" throat • **BEADING/EMBOSSING:** #2 Niagara Single End • **PATTERN / EMBOSSING ROLLING MACHINE:** 3-Roller Design, approx. 6" long arbors, 5C collet cap., draw bar, bench type • **DRAW BENCH:** 18" Draw Bench, 15HP, control cabinet, cut-off saw, chain-type, pre-form head, spare turks type heads • **STRIP TUBE/ CHANNEL FORMER:** Custom Design Pneumatic Cutoff; Extra Forming Head and Dies



BUYER'S PREMIUM
WILL APPLY

VISIT OUR WEBSITE FOR TERMS & CONDITIONS,
PHOTOS & MACHINE INFORMATION

To Register For This Auction, Please Visit www.kosterindustries.com

AUCTION DATE: Tuesday, June 18th, 2019 at 10:30 a.m.

INSPECTION DATE: Monday, June 17th From 9:00 a.m. to 4:00 p.m.

Sale Presented By:

KOSTER
INDUSTRIES
AUCTIONEERS • APPRAISERS • LIQUIDATORS

www.kosterindustries.com • e-mail: info@kosterindustries.com

Corporate Office:
40 Daniel Street, Ste 2
Farmingdale, NY 11735
631-454-1766
Fax: 631-454-1779



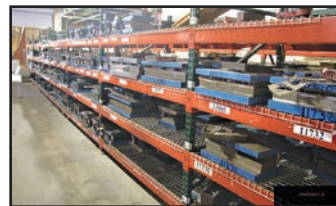
In Conjunction With:

GOLD International
MACHINERY

Website: www.goldmachinery.com

Phone: (401) 724-3200 • Email: mail@goldmachinery.com

LUBOW MACHINES & BENDERS: Lubow AR-250 Ring Roller; (2) Lubow Mdl. RR-15 & RR-2 Ring Rollers; (2) Horizontal Rotary; Pneumatic Benders; Lubow ML-10 Table Bender; DiAcro #1A Manual Rod & Tube Bender • **EDM'S:** Charmilles Form 20ZNC Ram Type EDM, 19.85" x 13.7795" T-slotted table, travels: X-11.8", Y-7.87", Z-11.8", (2003); **Charmilles Form 20** Ram Type EDM, Heidenhain readout, 6" x 12" permanent magnetic chuck • **TOOLROOM MACHINERY:** 16" x 64" Camut Mdl. **MINI-15** Automatic Hydraulic Feed Surface Grinder; 12" x 30" **MSC Mdl. SGS-1230AHD** Hydraulic Feed Surface Grinder; 12" x 30" **SJ** Hydraulic Feed Surface Grinder, coolant; 8" x 15" **Bridgeport Mdl. 815** Hand Feed Surface Grinder; 6" x 12" **Boyar Schultz Mdl. H612** Hand Feed Surface Grinder; **Clausing Kondia Mdl. FV-1** Vertical Mill, 2.2 kW, vari-speed, Mitutoyo DRO, 9" x 48" table; **Bridgeport 1-1/2HP** Vertical Mill, 9" x 42" table, vari-speed, Mitutoyo DRO; **Bridgeport 1-1/2HP** Vertical Mill, 9" x 42" power feed table, vari-speed; **Bridgeport 1HP** Vertical Mill, 9" x 42" table, 60–2,720 RPM, Acu-Rite DRO; **Bridgeport 1/2HP** Round Overarm M-Head Mill, 425–2,750 RPM, 9" x 32" table; 12" x 36" **Clausing Mdl. 5914** Lathe, vari-speed; (2) 30" **Johansson** Radial Arm Drills, 37" x 17-3/4" T-slotted table • **POWER SHEAR & PRESS BRAKES:** 36-Ton x 10' **Niagara Mdl. 31B-36-8-10** Press Brake; 25-Ton (approx.) x 6' **Niagara** Press Brake, 16ga. x 52"; **Tennsmith Mdl. H52** Hydraulic Shear, rear operated manual back gauge • **MANUAL SHEET METAL EQUIPMENT:** 36" **Pexto** Sheet Metal Roller; 24" Brake, bench type, (2) 12" **DiAcro #12** Finger Brakes; 12" **DiAcro #2A** Roller • **SPOT WELDERS:** (4) 20-KVA **Alphil Mdl. RFTE & RFTEF** Rocker Arm Type; 20-KVA **Alphil Mdl. VPTF** Pneumatic Press Type, 12" throat; 15-KVA **Alphil Mdl. RFTE** Rocker Arm Type, 18" throat • **SAWS:** 10" x 20" **Jaespar Mdl. W-260** Horizontal Bandsaw; 16" **DoAll Mdl. ML** Vertical Bandsaw • **HEAT TREAT:** **Sentry Size 5 Mdl. Y** Furnace, 20" x 9-1/2" x 7" high approx. ID, digital temperature controls; **Sentry** Furnace, 13" dia. x 36" deep approx. ID, digital temperature control; **Sybron/Thermolyne 2,200°** Furnace, 7"D. x 5"W. x 3-1/2"H. approx. ID • **MISC. MACHINERY:** **Hamilton** Die Flipper, 12" x 35" top platen; **Perkins** Manual Screw Press; 24" **Cooper Weymouth** Straightener; **Thomson 1/8"** Riveter; **Bellows Mdl. PCB-1** Pneumatic Press; Cyclone Reach-In Shot Blast Cabinet; **KXM10** Bench Type Tool & Cutter Grinder; **Assorted Aercology** Downdraft Table & Fume Collectors; **Hobart Mdl. RC-200** Welder; 9-Roll 12" Wide Straightener; 12" **Johansson Mdl. 8-18** Geared Drill; Assorted Kick Presses • **AIR COMPRESSORS & DRYER:** 30HP **Compare Mdl. 6030CAL** Screw Type, **Hankinson Mdl. 20400** 2HP Air Dryer; 7-1/2HP **Ingersoll Rand Mdl. T30** Vertical Piston Type Air Compressor • **MATERIAL HANDLING:** 4,000-Lb. **Yale** Electric Stand-Up Riding Type Forklift Truck, extending forks; 2,780-Lb. **Komatsu Mdl. FG15S-2** Riding Type Forklift Truck; Assorted Die Lift Carts and Pallet Trucks



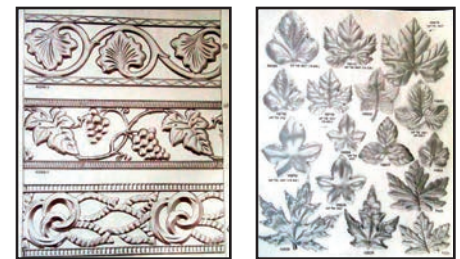
PARTIAL VIEW OF DIES

ADJUSTABLE RACKING: Assorted Coil Racks, approx. (72) sections, 114"L. x 9"W., adjustable; 42" x 108" Adjustable Pallet Racking, 3-tier, wire shelving, approx. (90) sections; 48" x 84" Adjustable Pallet Racking, 4-tier, wire shelving, (7) sections; 24" x 72" Adjustable Pallet Racking, 4-tier, wire shelving, (15) sections

MATERIAL: Assorted Lengths of D2 & S7 Tool Steel and Cold Rolled; **MISCELLANEOUS SHOP & CRIB RELATED:** Milling Visers, Collets, 5" Chas. Allen Vise & Anvil, **Dumore** Toolpost Grinders, **Rockwell 3JR** Hardness Tester, Bench Spot Welder, Clamps, Die Lift Carts, **A&P** Galvanize Tubs, Work Benches, **Lista & Vidmar** Tool Cabinets, Hardware, Electrical & Maintenance Items, Wire, Grinding Wheels, Broach Sets, Stamp Sets, Drill Chucks, Drills, Taps, Assorted Inspection Items, Etc.

To Register For This Auction, Please Visit www.kosterindustries.com

AUCTION DATE: Tuesday, June 18th, 2019 at 10:30 a.m.
INSPECTION DATE: Monday, June 17th From 9:00 a.m. to 4:00 p.m.



SAMPLE OF PRODUCTS

VISIT OUR WEBSITE FOR
 TERMS & CONDITIONS,
 PHOTOS & MACHINE INFORMATION

Sale Presented By:

KOSTER
INDUSTRIES
 AUCTIONEERS • APPRAISERS • LIQUIDATORS

www.kosterindustries.com • e-mail: info@kosterindustries.com

Corporate Office:
 40 Daniel Street, Ste 2
 Farmingdale, NY 11735
 631-454-1766
 Fax: 631-454-1779



In Conjunction With:

GOLD International
MACHINERY

Website: www.goldmachinery.com

Phone: (401) 724-3200 • Email: mail@goldmachinery.com