

Features:

- . Private Gated Community
- . 24/7 Security with CCTV Monitoring
- . Community Retail Centre
- . Gym
- . Lakeshore Promenade/Boardwalk
- . Private Beach Facilities
- . Specialised Hospital Facility
- . A Marina
- . Community Club Houses
- . Community Green Parks
- . Paved Walk ways and Jogging Tracks
- . K-12 International School
- . Wadi Degla Sports Club
- . Hotels and Resorts
- . Children's Play Area
- . Swimming Pools
- . Sauna and Steambath

Kiyiira Property Agency Presents - Pearl Marina Luxury Lakeside Living

We seek out high growth low financial entry point, property investment opportunities on the motherland. We research the legalities of the purchase and work only with proven developers.

www.pearlmarinaproperties.com

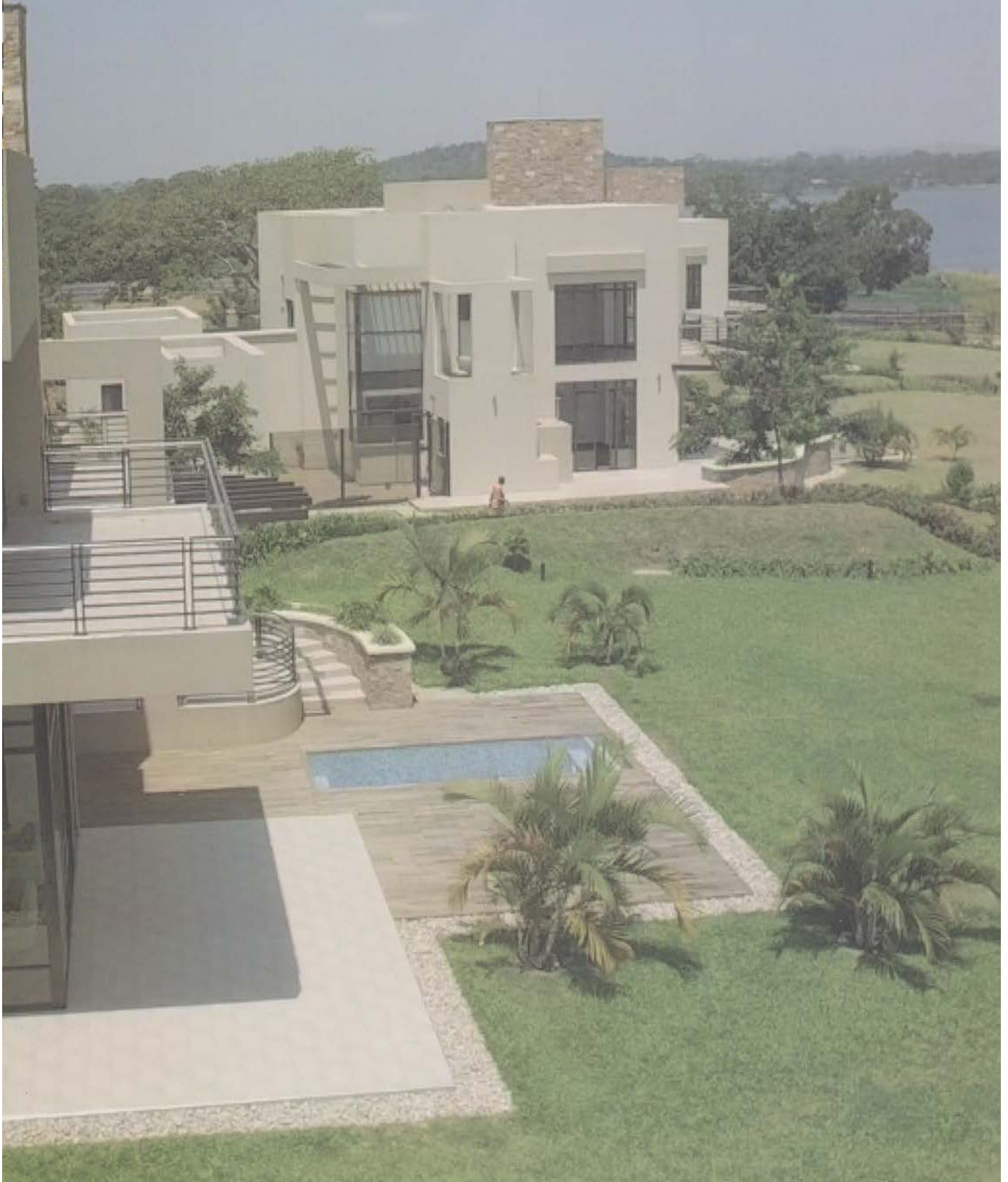
Pearl Marina is situated between Entebbe International Airport and Kampala. Entebbe International Airport is approximately 20 minutes' drive and Kampala is approximately 35 minutes' drive.



UPCOMING RETAIL CENTRE



Pearl Marina is situated between Entebbe International Airport and Kampala. Entebbe International Airport is approximately 20 minutes' drive and Kampala is approximately 35 minutes' drive.





Mirabella RESIDENCES

OF INCREDIBLE BEAUTY

FROM USD 330,000

- Total area: 300m²
- Plot size: 20 -28 Decimals
- Private Mailo / Freehold title
- 4 bedroom, maid's room and laundry room
- All bedrooms ensuite
- 5 Bathrooms
- 2 living rooms
- **Flexible Payment plan**





FROM USD 40,000

- 1 Bedroom
- Total area: 50m²
- Lounge
- 1 Bathroom
- Kitchen
- Laundry yard

● Flexible Payment plan: 10% every quarter.



FROM USD 59,000

- 2 Bedroom
- Total area: 80m²
- Lounge
- 2 Bathrooms
- Kitchen
- Laundry yard



FROM USD 70,000

- 3 Bedroom with master en-suite
- Total area: 100 sqm
- Lounge
- 2 Bathrooms
- Kitchen
- Dining
- Laundry yard



Riviera

RESIDENCES

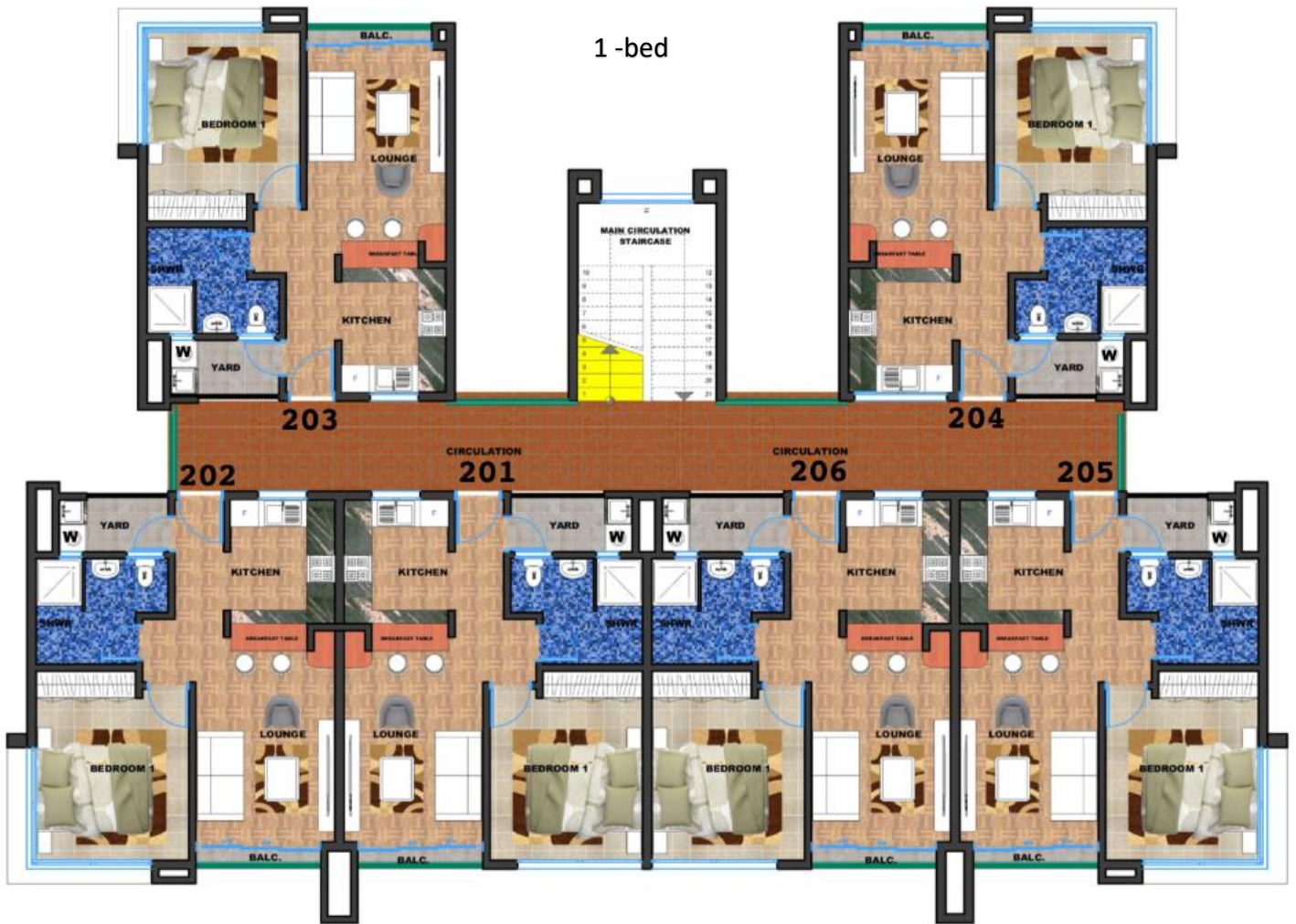
FROM USD 225,000

- Total area: 220m²
- 3 bedroom, maid's room and laundry room
- Study
- Master bedroom ensuite
- 2 living rooms
- Flexible Payment plan: 10% every quarter.



FLOOR PLAN

1 - bed



FLOOR AREA: 655.33sqm



FLOOR PLAN

3-bed



Bella Vista 1-bed Front



Bella Vista 1-bed back



Bella Vista 2-bed

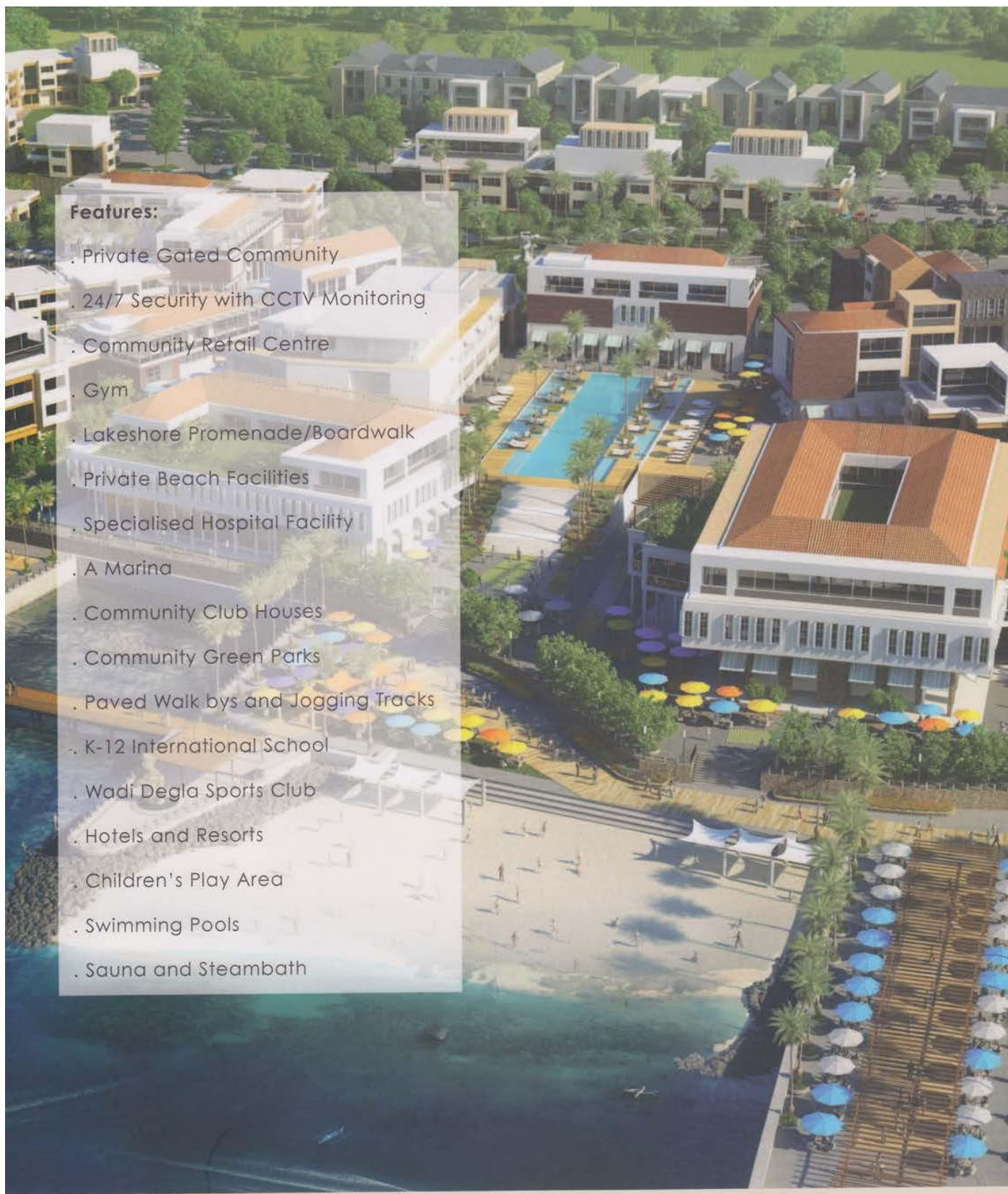


Bella Vista 3-bed



SITE PLAN





Features:

- . Private Gated Community
- . 24/7 Security with CCTV Monitoring
- . Community Retail Centre
- . Gym
- . Lakeshore Promenade/Boardwalk
- . Private Beach Facilities
- . Specialised Hospital Facility
- . A Marina
- . Community Club Houses
- . Community Green Parks
- . Paved Walk ways and Jogging Tracks
- . K-12 International School
- . Wadi Degla Sports Club
- . Hotels and Resorts
- . Children's Play Area
- . Swimming Pools
- . Sauna and Steambath

KIYIIRA
ReConnecting Diasporans

Pat Headley

Property investment, Tours & Events.

✉ info@kiyiira.com

☎ Office +44 (0) 203 916 5066



For more info and brochure visit www.kiyiira.com



*Kiyiira, pronounced 'Chi-era' meaning 'Roar',
the original name for the Nile River
as spoken by the people
of the Bisiga region of Uganda.*

Kiyiira is a trading name of Azanatek Ltd Registered in England & Wales number 967648.