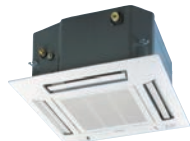




Multi-Zone Heating and Cooling Solutions







HEATING & AIR CONDITIONING SOLUTIONS

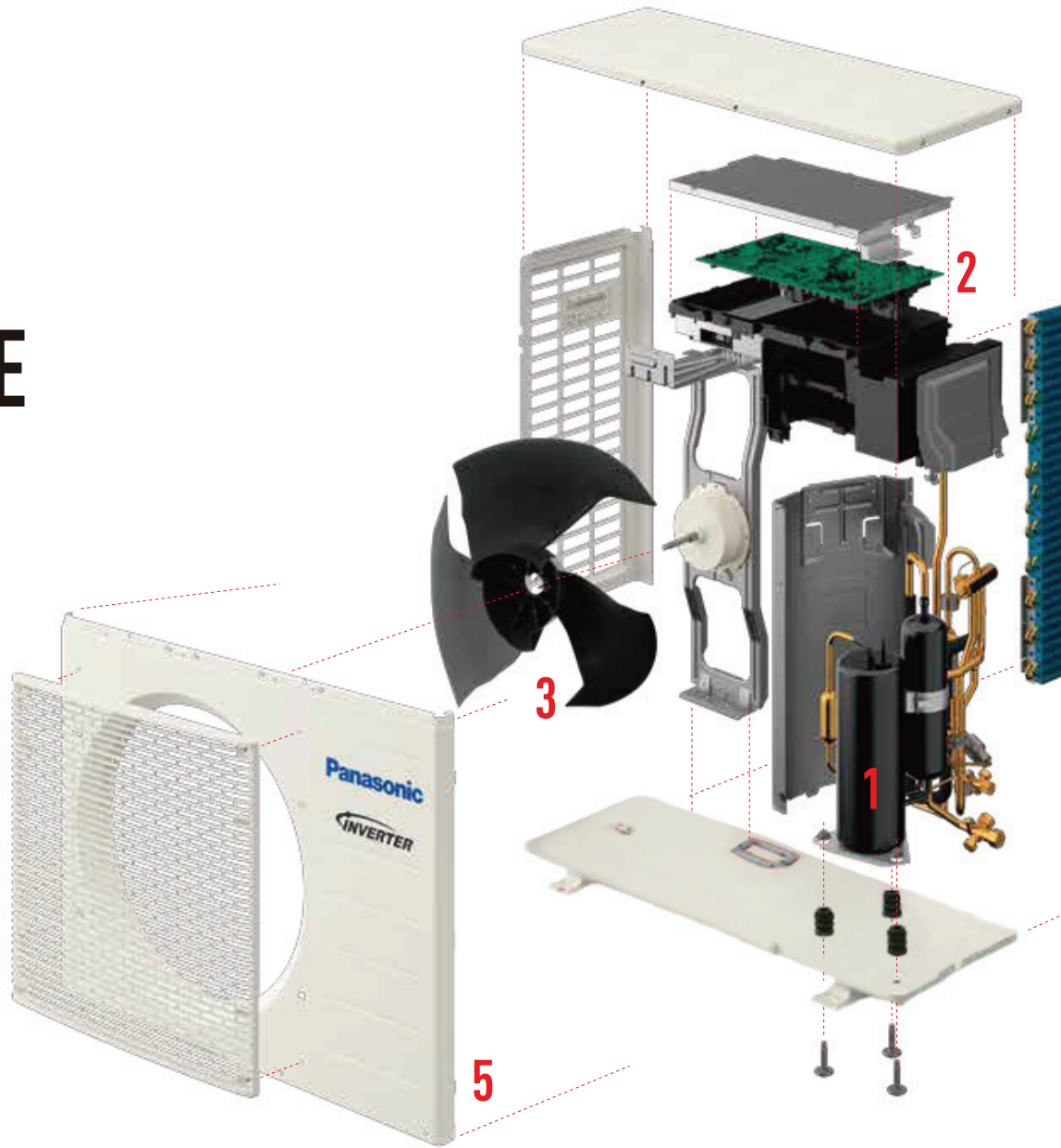
Since 1983, Panasonic Heating and Air Conditioning has offered a wide range of versatile solutions for cooling and heating requirements for single or multiple rooms in North America. A multi-zone system efficiently cools and heats 2-5 rooms or a whole house with one outdoor condenser and up to 5 indoor units. A multi-zone system provides optimal temperature control, comfort and cost savings for its occupants.

Worldwide Panasonic's Air Conditioning Group has grown into a thriving global company through its continuous quest for product innovations and technology. This has earned Panasonic the reputation as the trusted brand for superior energy-efficient and reliable heating and air conditioning products.

Reliable Technology Built-in

PRECISE

Precise design



1 High-Efficiency Compressor

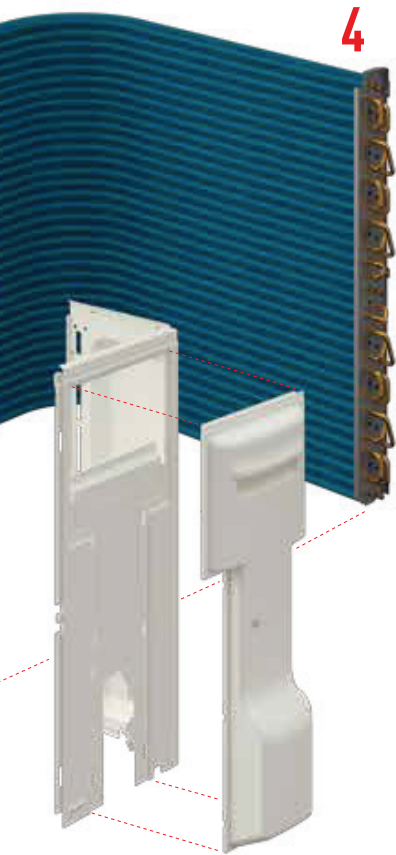
High-performance compressor with wide power output range operates accurately with less than 1 ampere for precise operation.



2 Inverter Technology

Advanced drive technology adjusts precise compressor motor rotation. During the start-up phase, the compressor quickly provides powerful, high-speed rotation; during the run phase the compressor smoothly shifts to a low speed rotation for energy savings. **This maximizes compressor performance and optimizes high efficient operation.**





4



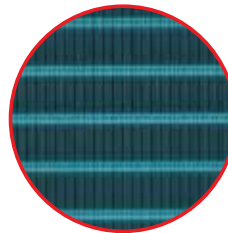
3 High-Efficiency Blades

Frost on heat exchanger is frequent in cold climates. The three blade, high static pressure design moves air quietly and evenly even under harsh conditions and provides high efficiency operation.



TOUGHNESS

Rugged body



*Blue Fin
Condenser*

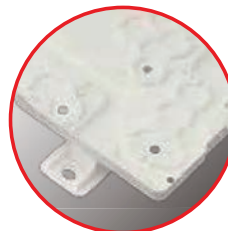
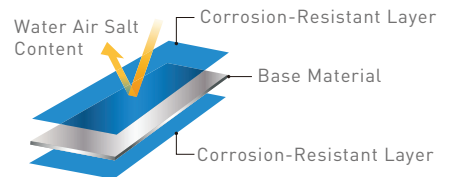
4

Blue Fin Condenser

Blue Fin anti-rust coating is applied to each fin. This special coating prevents rust from salt air and moisture from rain and melting snow and assures longer life of the heat exchanger.

**3 layer structure
3 times longer lasting**

Note: According to Panasonic test results.



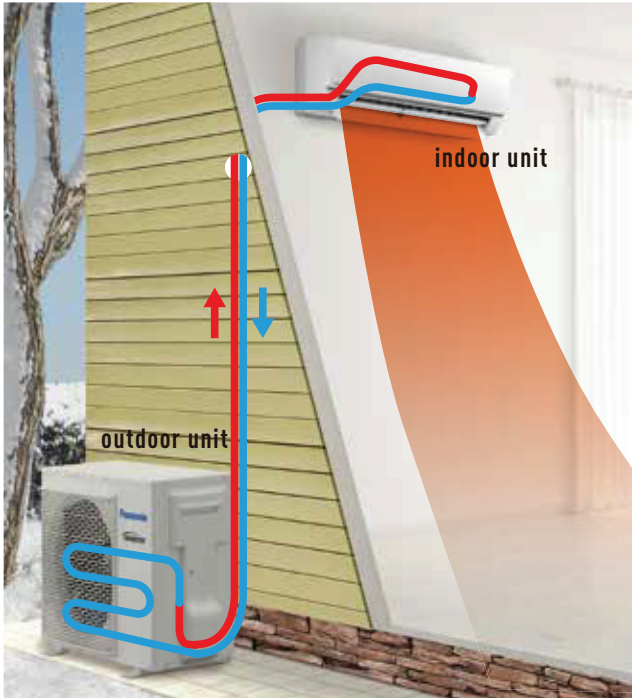
5

Powder Coated Finish

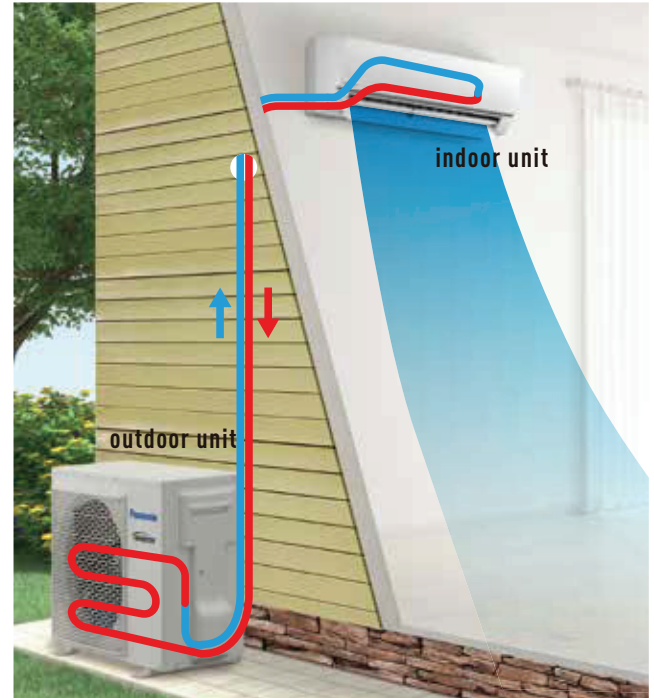
An industrial grade paint used on exterior finishes for guardrails, automobile parts provide corrosion resistance and durability.

Heating and Cooling for All Seasons

The air conditioning heat pump consists of a single or multiple indoor units and a single outdoor condenser unit. The indoor and outdoor units are connected by refrigerant pipes that cycle refrigerant gas between the indoor and outdoor units. The direction of the gas can be switched which changes operation between heating and cooling. This switching change is done with a simple button push on the remote controller and heating and cooling comfort is provided year-round.



At heating operation Simply said, heat is transferred from outdoors to indoors using a compressor and high pressure, high temperature refrigerant. Cool air is drawn into the indoor unit and Warm air is released into the room. The refrigerant cycle continually repeats.



At cooling operation Simply said, heat is transferred from indoors to outdoors using a compressor and high pressure, high temperature refrigerant in a reverse cycle from heating. Warm moist air is drawn into the indoor unit and Cool dry air is released into the room. The refrigerant cycle continually repeats.

Superb comfort Precise Control



Reduces Electricity Consumption



Constant Comfort



Quick Cooling and Heating



Whisper Quiet Operation

Wall Mount ECONAVI



What's ECONAVI?

High-precision sensor technology allows efficient, automatic operation to match room conditions. This keeps everyone comfortable while saving energy.

What does ECONAVI detect?

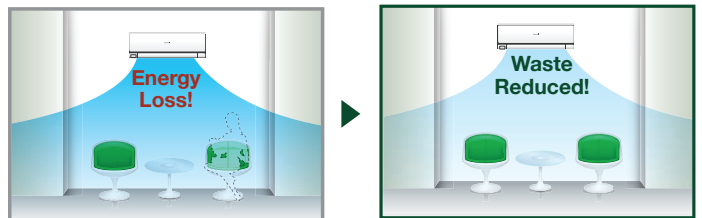
- EXAMINE**
 - Level of activity.
 - Human presence.
- EVALUATE**
 - Changes in human location.
 - Changes in human activity.
 - Changes in human presence.
- EXECUTE**
 - Adjusts airflow direction.
 - Low activity: Auto increase set temperature.
 - Absence: Auto increase set temperature.



ECONAVI Sensors

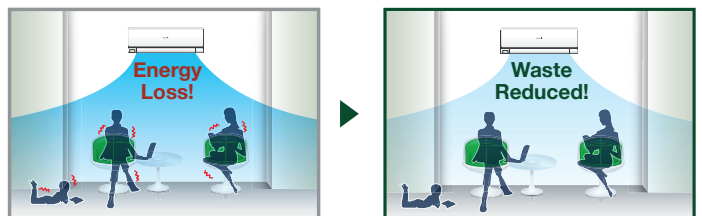
1. Absence Detection **Human Activity Sensor**

Reduces energy usage when no activity is detected.



2. Activity Detection **Human Activity Sensor**

When activity is detected, sensors start working to efficiently cool the zone.



Outdoor Units NEW -5°F Heat Operations

See following pages for outdoor models specifications and combinations.



2 Zone (1.5 Ton) CU-2E18SBU-5



*Blue Fin
Condenser*

Cooling Capacity: 16,700 (7,200 - 20,000) Btu/hr.
Heating Capacity: 20,200 (7,200 - 24,600) Btu/hr.
SEER Non-Ducted 19.0 / Ducted 19.0
EER Non-Ducted 12.55 / Ducted 12.55
HSPF Non-Ducted 9.5 / Ducted 9.0
Min/Max capacity 11,000 - 21,800 Btu/hr.



2-3 Zone (1.5 Ton) CU-3E19RBU-5



*Blue Fin
Condenser*

(Non-Ducted)

Cooling Capacity: 19,000 (6,100 - 24,800) Btu/hr.
Heating Capacity: 26,000 (5,500 - 28,400) Btu/hr.
SEER Non-Ducted 22.0 / Ducted 18.5
EER Non-Ducted 12.55 / Ducted 10.85
HSPF Non-Ducted 10.5 / Ducted 9.0
Min/Max capacity 15,300 - 30,600 Btu/hr.



2-4 Zones (2 Ton) CU-4E24RBU-5



*Blue Fin
Condenser*

(Non-Ducted)

Cooling Capacity: 24,000 (10,200 - 31,400) Btu/hr.
Heating Capacity: 37,800 (14,300 - 48,500) Btu/hr.
SEER Non-Ducted 22.0 / Ducted 19.0
EER Non-Ducted 12.55 / Ducted 10.85
HSPF Non-Ducted 9.5 / Ducted 9.0
Min/Max capacity 15,300 - 30,600 Btu/hr.



2-5 Zones (3 Ton) CU-5E36QBU-5

*Blue Fin
Condenser*

Cooling Capacity: 36,000 (9,900 - 39,000) Btu/hr.
Heating Capacity: 37,800 (11,600 - 49,500) Btu/hr.
SEER Non-Ducted 18.5 / Ducted 16.5
EER Non-Ducted 9.6 / Ducted 8.3
HSPF Non-Ducted 10.0 / Ducted 9.5
Min/Max capacity 15,300 - 59,500 Btu/hr.

All multi split condensers must have minimum two indoor units installed.

Indoor Units

Wall Mount

CS-ME5RKUA / CS-ME7RKUA / CS-E9RKUAW / CS-E12RKUAW / CS-E18RKUAW / CS-E24RKUAW



Wireless
Controller
(Included)



Wired Controller
with 32 ft cable
CZ-RD516C-1
(Optional)

4-Way Cassette

CS-ME9SB4U / CS-E12RB4UW / CS-E18RB4UW



Wireless
Controller
(Included)



Wired Controller
with 32 ft cable
CZ-RD52CU
(Optional)

Slim Duct

CS-ME5SD3UA / CS-ME7SD3UA / CS-E9SD3UAW / CS-E12SD3UAW / CS-E18SD3UAW



Wireless
Controller
with Receiver/Cable
(Included)



Wired Controller
with 32 ft cable
CZ-RD52DU
(Optional)

Combination Possibilities

Multi Zone		CU-2E18SBU-5	CU-3E19RBU-5	CU-4E24RBU-5	CU-5E36QBU-5
Wall	CS-ME5RKUA	✓	✓	✓	✓
	CS-ME7RKUA	✓	✓	✓	✓
	CS-E9RKUAW	✓	✓	✓	✓
	CS-E12RKUAW	✓	✓	✓	✓
	CS-E18RKUAW	-	✓	✓	✓
	CS-E24RKUAW	-	-	✓	✓
4-Way	CS-ME9SB4U	✓	✓	✓	✓
	CS-E12RB4UW	✓	✓	✓	✓
	CS-E18RB4UW	-	✓	✓	✓
Ducted	CS-ME5SD3UA	✓	✓	✓	✓
	CS-ME7SD3UA	✓	✓	✓	✓
	CS-E9SD3UAW	✓	✓	✓	✓
	CS-E12SD3UAW	✓	✓	✓	✓
	CS-E18SD3UAW	-	✓	✓	✓
Capacity range of connectable indoor units		3.2 – 6.4 kW	4.5 – 9.0 kW	4.5 – 13.6 kW	4.5 – 17.5 kW
Piping Length	1 room maximum pipe length (m (ft))	25 (82.0)	25 (82.0)	25 (82.0)	25 (82.0)
	Allowable elevation (m (ft))	15 (49.2)	15 (49.2)	15 (49.2)	15 (49.2)
	Total allowable pipe length (m (ft))	50 (164.0)	50 (164.0)	70 (229.6)	80 (262.4)
	Total pipe length for maximum chargeless length (m (ft))	20 (65.6)	30 (98.4)	45 (147.6)	45 (147.6)
	Additional gas amount over chargeless length (g/m (oz/ft))	20 (0.2)	20 (0.2)	20 (0.2)	20 (0.2)

Connect 2 to 5 Indoor Units



Wireless Controller (Included)



Wired Remote Controller CZ-RD516C-1 (Optional)



Wireless Controller (Included)
Wired Remote Controller CZ-RD52CU (Optional)



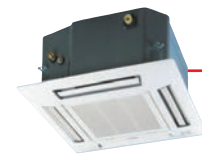
Wireless Controller (Included)



Wired Remote Controller CZ-RD52CU (Optional)



CZ-BT20U



2 Zone



2-3 Zone



2-4 Zone



2-5 Zone

			Outdoor Unit			
Model No.			CU-2E18SBU-5	CU-3E19RBU-5	CU-4E24RBU-5	CU-5E36QBU-5
Number of zones (indoor units)			2	2 - 3	2 - 4	2 - 5
Capacity	Cooling	Btu/h	16,700 (7,200 - 20,000)	19,000 (6,100 - 24,800)	24,000 (10,200 - 31,400)	36,000 (9,900 - 39,000)
	Heating	Btu/h	20,200 (7,200 - 24,600)	26,000 (5,500 - 28,400)	37,800 (14,300 - 48,500)	37,800 (11,600 - 49,500)
Performance						
SEER	(Non-Ducted / Ducted)		19.0 / 19.0	22.0 / 18.5	22.0 / 19.0	18.5 / 16
EER	(Non-Ducted / Ducted)		12.55 / 12.55	12.55 / 10.85	12.55 / 10.85	9.6 / 8.3
HSPF	(Non-Ducted / Ducted)		9.5 / 9.0	10.5 / 9.0	9.5 / 9.0	10.0 / 9.5
Electrical						
Power Supply	(V, Phase, Hz)		208V/230V, Single Phase, 60Hz	208V/230V, Single Phase, 60Hz	208V/230V, Single Phase, 60Hz	208V/230V, Single Phase, 60Hz
Minimum Circuit Ampacity	A		20	20	30	30
Maximum Overcurrent Protection	A		25	30	45	45
Piping Length & Gas Charge						
Maximum Allowable Tube Length Per System	(ft)		164	164	230	262
1 Room Maximum Pipe Length	(ft)		82	82	82	82
Allowable Elevation	(m / ft)		49.2	49.2	49.2	49.2
Total Pipe Length For Maximum Chargeless Length	(ft)		65.6	98.4	147.6	147.6
Refrigerant Tube Connections			Flare	Flare	Flare	Flare
Refrigerant Control			Electric Expansion Valve	Electric Expansion Valve	Electric Expansion Valve	Electric Expansion Valve
Refrigerant	R-410A Amount Charged At Shipment		78.70 oz	93.2 oz	120.0 oz	120.0 oz
Additional Gas Amount Over Chargeless Length	(oz/ft)		0.2	0.2	0.2	0.2
Dimensions & Weight						
Indoor	Height	inches	31-10/32"	31-10/32"	39-11/32"	39-11/32"
	Width	inches	34-15/32" (+3 3/4)	34-15/32" (+3 3/4)	37-1/32"	37-1/32"
	Depth	inches	14-3/6"	14-3/6"	13-13/32"	13-13/32"
	Weight	lb	157	159	183	183



Wall Mount



4-Way Cassette



Slim Duct

			Wall Mount					
Model No.			CS-ME5RKUA	CS-ME7RKUA	CS-E9RKUAW	CS-E12RKUAW	CS-E18RKUAW	CS-E24RKUAW
Performance & Electrical Ratings								
Capacity	Cooling	Btu/h	5,500 (4,400-7,800)	6,900 (6,100-9,900)	8,600 (6,100-9,900)	10,900 (6,100-13,000)	17,100 (6,500-19,800)	24,000 (5,800-27,200)
	Heating	Btu/h	8,900 (4,100-10,900)	10,900 (4,100-14,000)	12,300 (4,100-14,700)	15,300 (4,100-19,800)	23,400 (19,400-4,100)	28,800 (5,800-29,200)
Moisture Removal	High	Pints/H	0.6	0.8	1.1	1.3	3.0	7.6
Dry Air Flow	High	CFM	415	425	430	475	680	715
Power Supply	V, Phase, Hz		208/230V, 1PH, 60Hz	230/208V, 1PH, 60Hz	230/208V, 1PH, 60Hz	230/208V, 1PH, 60Hz	230/208V, 1PH, 60Hz	230/208V, 1PH, 60Hz
Running Amps	Cooling	A	2.0 / 2.3	2.5 / 2.8	3.2 / 3.5	3.9 / 4.3	7.2 / 8.0	10.8 / 11.9
	Heating	A	3.0 / 3.4	3.7 / 4.1	4.7 / 5.2	6.0 / 6.6	8.3 / 9.3	11.4 / 12.6
Power Input	Cooling	W	400 (250-640)	500 (340-810)	630 (340-810)	800 (340-1,360)	1,300 (430-1,600)	2,350 (430-2,720)
	Heating	W	600 (300-960)	740 (300-1,230)	940 (300-1,230)	1,230 (200-2,100)	1,750 (380-1,800)	2,500 (380-2,660)
Operation Sound [Hi / Me / Lo / Q-Lo]	Cooling		38 / 25	39 / 25	40 / 25	43 / 28	47 / 39 / 36	48 / 40 / 37
	Heating		40 / 29	41 / 29	42 / 29	44 / 35 / 32	46 / 39 / 36	48 / 40 / 37
Refrigerant Tube Diameter	Discharge	inches	1/4"	1/4"	1/4"	1/4"	1/4"	1/4"
	Suction	inches	3/8"	3/8"	3/8"	3/8"	3/8"	1/2"
Adapters Required			none	none	none	CZ-MA1P-US	CZ-MA1P-US	CZ-MA2P-US and CZ-MA3P-US
Dimensions & Weight								
Height		inches	11-7/16"	11-7/16"	11-7/16"	11-7/16"	11-7/16"	11-7/16"
Width		inches	34-9/32"	34-9/32"	34-9/32"	34-9/32"	42-5/32"	42-5/32"
Depth		inches	8-7/16"	8-7/16"	8-7/16"	8-7/16"	9-15/32"	9-15/32"
Net Weight		lb	20.0	20.0	20.0	20.0	26.0	26.0

			4-Way Cassette		
Model No.			NEW CS-ME9SB4U	CS-E12RB4UW	CS-E18RB4UW
Performance & Electrical Ratings					
Capacity	Cooling	Btu/h	8,600 (6,100 - 9,900)	10,900 (6,100-13,000)	171,000 (6,500-19,400)
	Heating	Btu/h	12,300 (4,100 - 14,700)	15,300 (4,100-19,800)	23,400 (4,100-23,600)
Moisture Removal	High	Pints/H	2.5	3.2	4.4
Dry Air Flow	High	CFM	400	370(C),390(H)	450(C),495(H)
Power Supply	V, Phase, Hz		208/230V, 1PH, 60Hz	230/208V, 1PH, 60Hz	230/208V, 1PH, 60Hz
Running Amps	Cooling	A	3.5 / 3.2	4.3 / 3.9	8.0 / 7.2
	Heating	A	5.2 / 4.7	6.6 / 6.0	10.7 / 9.7
Power Input	Cooling	W	630 (340 - 810)	800 (340-1,360)	1,550 (340-2,130)
	Heating	W	300 (940 - 1.2k)	1,230 (300-2,100)	2,100 (300-2,520)
Operation Sound [Hi / Me / Lo / Q-Lo]	Cooling		36 / 30 / 27	36 / 30	36 / 32
	Heating		37 / 32 / 29	36 / 32	46 / 33
Refrigerant Tube Diameter	Discharge	inches	1/4"	1/4"	1/4"
	Suction	inches	3/8"	3/8"	3/8"
Adapters Required			none	CZ-MA1P-US	CZ-MA1P-US
Dimensions & Weight					
Indoor	Height	inches	10-1/4"	10-1/4"	10-1/4"
	Width	inches	22-3/4"	22-3/4"	22-3/4"
	Depth	inches	22-3/4"	22-3/4"	22-3/4"
	Net Weight	lb	40.0 (grille 6.0)	40.0	40.0

Pipe diameters listed below are for Multi zone installations. For Single zone pipe diameter see single zone product pages.

			NEW Slim Duct				
Model No.			CS-ME5SD3UA	CS-ME7SD3UA	CS-E9SD3UAW	CS-E12SD3UAW	CS-E18SD3UAW
Performance & Electrical Ratings							
Capacity	Cooling	Btu/h	5,500 (4,400 - 7,800)	6,900 (6,100 - 9,900)	9,000 (4100-10200)	11500 (4100-13300)	17200 (5800-19400)
	Heating	Btu/h	8,900 (4,100 - 10,900)	10,900 (4,100 - 14,000)	12000 (4100-14100)	13800 (4100-16300)	20800 (5800-24200)
Moisture Removal	High	Pints/H	0.8	1.1	1.30	1.70	4.60
Dry Air Flow	High	CFM	484	494	475	475	540
Static Pressure (Standard / Switch Hi)		inch w.g.	0.10 / .022	0.10 / .022	0.10 / .022	0.10 / .022	0.10 / .023
Power Supply	V, Phase, Hz		208/230V, 1PH, 60Hz	208/230V, 1PH, 60Hz	208/230V, 1PH, 60Hz	208/230V, 1PH, 60Hz	208/230V, 1PH, 60Hz
Running Amps	Cooling	A	2.3 / 2.0	2.8 / 2.5	3.2	4.2	7.6
	Heating	A	3.4 / 3.0	4.1 / 3.7	5.1	5.6	8.7
Power Input	Cooling	W	400 (250 - 640)	500 (340 - 810)	690 (250 - 850)	920 (250 - 1,15k)	1,58k (430 - 1,82k)
	Heating	W	600 (300 - 960)	740 (300 - 1,23k)	1,12k (200 - 1,50k)	1,25k (200 - 1,71k)	1,83k (380 - 2,18k)
Operation Sound [Hi / Me / Lo / Q-Lo]	Cooling		35 / 28	36 / 29	35 / 28 / 25	35 / 28 / 25	41 / 30 / 37
	Heating		35 / 28	36 / 29	35 / 28 / 25	35 / 28 / 25	41 / 32 / 29
Refrigerant Tube Diameter	Discharge	inches	1/4"	1/4"	1/4"	1/4"	1/4"
	Suction	inches	3/8"	3/8"	3/8"	3/8"	3/8"
Adapters Required			none	none	none	CZ-MA1P-US	CZ-MA1P-US
Dimensions & Weight							
Indoor	Height	inches	7-7/8"	7-7/8"	7-7/8"	7-7/8"	7-7/8"
	Width	inches	29-17/32"	29-17/32"	29-17/32"	29-17/32"	29-17/32"
	Depth	inches	25-7/32"	25-7/32"	25-7/32"	25-7/32"	25-7/32"
	Net Weight	lb	42.0	42.0	42.0	42.0	42.0

Important: You must use refrigerant piping rated for R410a.

Multi Zone Combination Charts

CU-2E18SBU-5	
2 Zones	
5 + 5	
5 + 7	
5 + 9	
5 + 12	
7 + 7	
7 + 9	
7 + 12	
9 + 9	
9 + 12	
12 + 12	

CU-3E19RBU-5		
2 Zones	3 Zones	
5 + 12	5 + 5 + 5	7 + 7 + 7
5 + 18	5 + 5 + 7	7 + 7 + 9
5 + 18	5 + 5 + 7	7 + 7 + 9
7 + 12	5 + 5 + 12	7 + 7 + 18
7 + 18	5 + 5 + 18	7 + 9 + 9
9 + 9	5 + 7 + 7	7 + 9 + 12
9 + 12	5 + 7 + 9	7 + 12 + 12
9 + 18	5 + 7 + 12	9 + 9 + 9
12 + 12	5 + 7 + 18	9 + 9 + 12
12 + 18	5 + 9 + 9	9 + 12 + 12
-	5 + 9 + 12	-
-	5 + 12 + 12	-

CU-4E24RBU-5					
2 Zones	3 Zones		4 Zones		
5 + 18	5 + 5 + 5	7 + 7 + 12	5 + 5 + 5 + 5	5 + 7 + 7 + 24	7 + 7 + 9 + 24
5 + 24	5 + 5 + 7	7 + 7 + 18	5 + 5 + 5 + 7	5 + 7 + 9 + 9	7 + 7 + 12 + 12
7 + 9	5 + 5 + 9	7 + 7 + 24	5 + 5 + 5 + 9	5 + 7 + 9 + 12	7 + 7 + 12 + 18
7 + 12	5 + 5 + 12	7 + 9 + 9	5 + 5 + 5 + 12	5 + 7 + 9 + 18	7 + 9 + 9 + 9
7 + 18	5 + 5 + 18	7 + 9 + 12	5 + 5 + 5 + 18	5 + 7 + 9 + 24	7 + 9 + 9 + 12
7 + 24	5 + 5 + 24	7 + 9 + 18	5 + 5 + 5 + 24	5 + 7 + 12 + 12	7 + 9 + 9 + 18
9 + 9	5 + 7 + 7	7 + 9 + 24	5 + 5 + 7 + 7	5 + 7 + 12 + 18	7 + 9 + 12 + 12
9 + 12	5 + 7 + 9	7 + 12 + 12	5 + 5 + 7 + 9	5 + 7 + 18 + 18	7 + 9 + 12 + 18
9 + 18	5 + 7 + 12	7 + 12 + 18	5 + 5 + 7 + 12	5 + 9 + 9 + 9	7 + 12 + 12 + 12
9 + 24	5 + 7 + 18	7 + 12 + 24	5 + 5 + 7 + 18	5 + 9 + 9 + 12	7 + 12 + 12 + 18
12 + 12	5 + 7 + 24	7 + 18 + 18	5 + 5 + 7 + 24	5 + 9 + 9 + 18	9 + 9 + 9 + 9
12 + 18	5 + 9 + 9	9 + 9 + 9	5 + 5 + 9 + 9	5 + 9 + 9 + 24	9 + 9 + 9 + 12
12 + 24	5 + 9 + 12	9 + 9 + 12	5 + 5 + 9 + 12	5 + 9 + 12 + 12	9 + 9 + 9 + 18
18 + 18	5 + 9 + 18	9 + 9 + 18	5 + 5 + 9 + 18	5 + 9 + 12 + 18	9 + 9 + 12 + 12
18 + 24	5 + 9 + 24	9 + 9 + 24	5 + 5 + 9 + 24	5 + 12 + 12 + 12	9 + 9 + 12 + 18
-	5 + 12 + 12	9 + 12 + 12	5 + 5 + 12 + 12	5 + 12 + 12 + 18	9 + 12 + 12 + 12
-	5 + 12 + 18	9 + 12 + 18	5 + 5 + 12 + 18	7 + 7 + 7 + 7	12 + 12 + 12 + 12
-	5 + 12 + 24	9 + 12 + 24	5 + 5 + 12 + 24	7 + 7 + 7 + 9	-
-	5 + 18 + 18	9 + 18 + 18	5 + 5 + 18 + 18	7 + 7 + 7 + 12	-
-	5 + 18 + 24	12 + 12 + 12	5 + 7 + 7 + 7	7 + 7 + 7 + 18	-
-	7 + 7 + 7	12 + 12 + 18	5 + 7 + 7 + 9	7 + 7 + 7 + 24	-
-	7 + 7 + 9	12 + 12 + 24	5 + 7 + 7 + 12	7 + 7 + 9 + 9	-
-	-	12 + 18 + 18	5 + 7 + 7 + 18	7 + 7 + 9 + 12	-

CU-5E36QBU-5

2 Zones	3 Zones		4 Zones			5 Zones			
5+12	5+5+5	7+7+7	5+5+5+5	5+7+18+18	7+9+9+18	5+5+5+5+7	5+5+9+9+9	5+7+12+12+12	7+7+9+9+18
5+18	5+5+7	7+7+9	5+5+5+7	5+7+18+24	7+9+9+24	5+5+5+5+9	5+5+9+9+12	5+7+12+12+18	7+7+9+9+24
5+24	5+5+9	7+7+12	5+5+5+9	5+9+9+9	7+9+12+12	5+5+5+5+12	5+5+9+9+18	5+7+12+12+24	7+7+9+12+12
7+9	5+5+12	7+7+18	5+5+5+12	5+9+9+12	7+9+12+18	5+5+5+5+18	5+5+9+9+24	5+7+12+18+18	7+7+9+12+18
7+12	5+5+18	7+7+24	5+5+5+18	5+9+9+18	7+9+12+24	5+5+5+5+24	5+5+9+12+12	5+9+9+9+9	7+7+9+12+24
7+18	5+5+24	7+9+9	5+5+5+24	5+9+9+24	7+9+18+18	5+5+5+7+7	5+5+9+12+18	5+9+9+9+12	7+7+9+18+18
7+24	5+7+7	7+9+12	5+5+7+7	5+9+12+12	7+9+18+24	5+5+5+7+9	5+5+9+12+24	5+9+9+9+18	7+7+12+12+12
9+9	5+7+9	7+9+18	5+5+7+9	5+9+12+18	7+12+12+12	5+5+5+7+12	5+5+9+18+18	5+9+9+9+24	8+7+12+12+18
9+12	5+7+12	7+9+24	5+5+7+12	5+9+12+24	7+12+12+18	5+5+5+7+18	5+5+12+12+12	5+9+9+12+12	9+7+12+12+24
9+18	5+7+18	7+12+12	5+5+7+18	5+9+18+18	7+12+12+24	5+5+5+7+24	5+5+12+12+18	5+9+9+12+18	7+7+12+18+18
9+24	5+7+24	7+12+18	5+5+7+24	5+9+18+24	7+12+18+18	5+5+5+9+9	5+5+12+12+24	5+9+9+12+24	7+9+9+9+9
12+12	5+9+9	7+12+24	5+5+9+9	5+12+12+12	7+12+18+24	5+5+5+9+12	5+5+12+18+18	5+9+9+18+18	8+9+9+9+12
12+18	5+9+12	7+18+18	5+5+9+12	5+12+12+18	7+18+18+18	5+5+5+9+18	5+7+7+7+7	5+9+12+12+12	9+9+9+9+18
12+24	5+9+18	7+18+24	5+5+9+18	5+12+12+24	9+9+9+9	5+5+5+9+24	5+7+7+7+9	5+9+12+12+18	10+9+9+9+24
18+18	5+9+24	7+24+24	5+5+9+24	5+12+18+18	9+9+9+12	5+5+5+12+12	5+7+7+7+12	5+9+12+12+24	7+9+9+12+12
18+24	5+12+12	9+9+9	5+5+12+12	5+12+18+24	9+9+9+18	5+5+5+12+18	5+7+7+7+18	5+9+12+18+18	7+9+9+12+18
24+24	6+12+18	9+9+12	5+5+12+18	5+18+18+18	9+9+9+24	5+5+5+12+24	5+7+7+7+24	5+12+12+12+12	7+9+9+12+24
-	7+12+24	9+9+18	5+5+12+24	7+7+7+7	9+9+12+12	5+5+5+18+18	5+7+7+9+9	5+12+12+12+18	7+9+9+18+18
-	5+18+18	9+9+24	5+5+18+18	7+7+7+9	9+9+12+18	5+5+5+18+24	5+7+7+9+12	7+7+7+7+7	7+9+12+12+12
-	5+18+24	9+12+12	5+5+18+24	7+7+7+12	9+9+12+24	5+5+7+7+7	5+7+7+9+18	7+7+7+7+9	7+9+12+12+18
-	5+24+24	9+12+18	5+5+24+24	7+7+7+18	9+9+18+18	5+5+7+7+9	5+7+7+9+24	7+7+7+7+12	7+12+12+12+12
-	-	9+12+24	5+7+7+7	7+7+7+24	9+9+18+24	5+5+7+7+12	5+7+7+12+12	7+7+7+7+18	7+12+12+12+18
-	-	9+18+18	5+7+7+9	7+7+9+9	9+12+12+12	5+5+7+7+18	5+7+7+12+18	7+7+7+7+24	9+9+9+9+9
-	-	9+18+24	5+7+7+12	7+7+9+12	9+12+12+18	5+5+7+7+24	5+7+7+12+24	7+7+7+9+9	9+9+9+9+12
-	-	9+24+24	5+7+7+18	7+7+9+18	9+12+12+24	5+5+7+9+9	5+7+7+18+18	7+7+7+9+12	9+9+9+9+18
-	-	12+12+12	5+7+7+24	7+7+9+24	9+12+18+18	5+5+7+9+12	5+7+9+9+9	7+7+7+9+18	9+9+9+9+24
-	-	12+12+18	5+7+9+9	7+7+12+12	9+18+18+18	5+5+7+9+18	5+7+9+9+12	7+7+7+9+24	9+9+9+12+12
-	-	12+12+24	5+7+9+12	7+7+12+18	12+12+12+12	5+5+7+9+24	5+7+9+9+18	7+7+7+12+12	9+9+9+12+18
-	-	12+18+18	5+7+9+18	7+7+12+24	12+12+12+18	5+5+7+12+12	5+7+9+9+24	7+7+7+12+18	9+9+9+18+18
-	-	12+18+24	5+7+9+24	7+7+18+18	12+12+12+24	5+5+7+12+18	5+7+9+12+12	7+7+7+12+24	9+9+12+12+12
-	-	12+24+24	5+7+12+12	7+7+18+24	12+12+18+18	5+5+7+12+24	5+7+9+12+18	7+7+7+18+18	9+9+12+12+18
-	-	18+18+18	5+7+12+18	7+9+9+9	-	5+5+7+18+18	5+7+9+12+24	7+7+9+9+9	9+12+12+12+12
-	-	18+18+24	5+7+12+24	7+9+9+12	-	5+5+7+18+24	5+7+9+18+18	7+7+9+9+12	9+12+12+12+18
-	-	-	-	-	-	-	-	-	12+12+12+12+12

Multi-System Capacity and Combinations

1. System Capacity:

Understanding total System Capacity is an important step in sizing and selecting heat pump equipment.

Outdoor Unit Capacity: The **System Capacity** is the Cooling and Heating Capacity listed at the top of each Outdoor unit's specification chart.

Indoor Unit Demand: The Cooling and Heating Capacities are listed at the top of the specification chart of each Indoor Unit (see page 9). The total of these partial indoor capacities is the **System Demand**.

Now let's understand the term **Diversity**. Diversity is when the load in the conditioned space is not constant. For example the east side of a house has more direct sun and cooling load requirement in the morning and the west side has more direct sun and cooling load requirement in the afternoon.

A system sizing calculation that plans for diversity may size up to approximately 130% of indoor unit demand versus the outdoor unit's system capacity provided that planned operating demand throughout the day never exceeds 100% of system capacity. If there is no planned Diversity then the indoor unit demand should not exceed 100% of the outdoor unit capacity.

Therefore, a first step in sizing and selecting any multi-zone system is to understand the System Demand that the building requires before moving on to selecting Indoor unit combinations.

2. Indoor Combinations:

All Multi-Zone outdoor units operate within a Minimum-Maximum capacity range. Combination of indoor units that are not within the Minimum-Maximum capacity range will generate an H12 error code and the system will not operate.

Please follow the combination charts provided for each outdoor unit to stay within the allowable Minimum-Maximum capacity range.


If you have any question about equipment selection, please call the Panasonic Service Team. 1-800-851-1235 option 3 or 4.



Use of the AHRI Certified™ mark indicates a manufacturer's participation in the certification program. For verification of certification for individual products, go to www.ahridirectory.org



Quality Management System Certificate	 <small>SIRIM</small> <small>Certified to ISO 9001:2008</small> <small>Cert. No.: MY-AR 1010</small>	Certified to ISO 9001:2008 <small>Panasonic Appliance Air Conditioning Malaysia Sdn Bhd.</small> <small>Cert. No.: MY-AR 1010</small>
--	--	--

Environmental Management System Certificate	 <small>SIRIM</small> <small>UKAS</small> <small>674</small> <small>Certified to ISO 14001:2004</small> <small>Cert. No.: MY-ER 0112</small>	Certified to ISO 14001:2004 <small>Panasonic Appliance Air Conditioning Malaysia Sdn Bhd.</small> <small>Cert. No.: MY-ER 0112</small>
--	--	---



Serving the US Ductless market since 1983

Panasonic

Panasonic Corporation of North America
 Panasonic Appliances Air-Conditioning North America
 1690 Roberts Blvd., NW, Suite 110, Kennesaw, GA 30144 U.S.A.
business.panasonic.com/hvac

Panasonic Canada Inc.
 Enterprise Product Sales
 5770 Ambler Dr., Mississauga, ON, L4W 2T3 CANADA
www.panasonic.ca



Standard warranty - 7 years compressor/5 years parts
 For extended product warranty, please contract your local authorized dealer for more information.

Because its products are subject to continuous improvements, Panasonic reserves the right to modify product design and specifications without notice and without incurring any obligations.
 ©Copyright 2017, Panasonic Air Conditioning Products.

 **Caution Related to Safety** **Do not add or replace refrigerant other than the specified type. Manufacturer is not responsible for the damage and deterioration in safety due to usage of other refrigerant.**