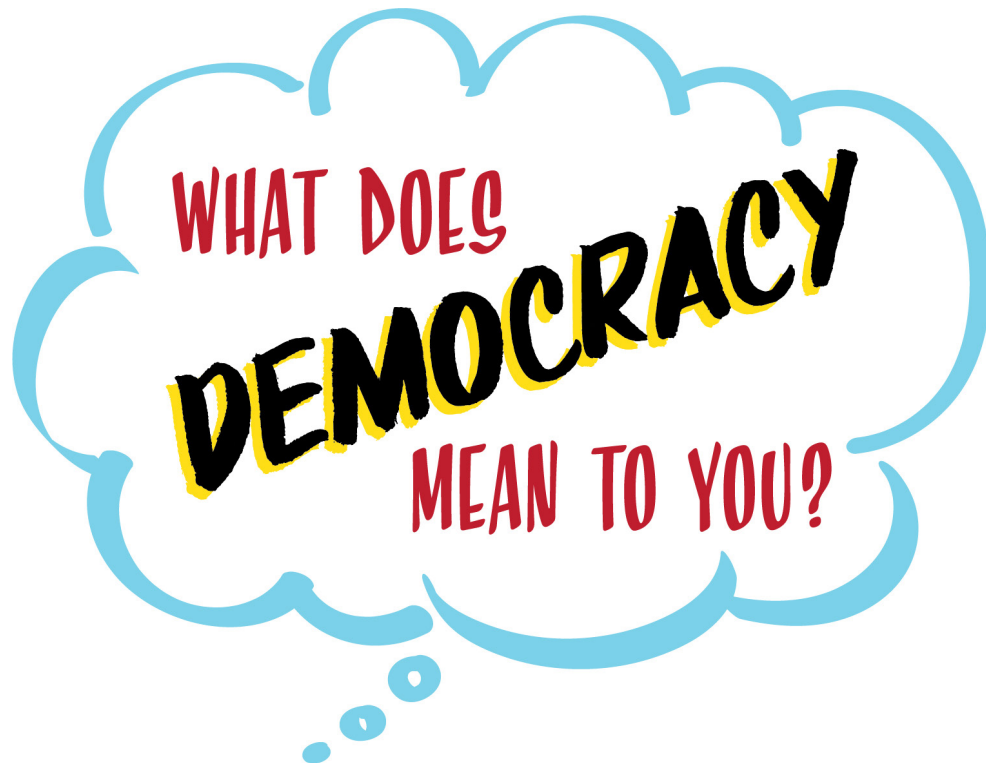


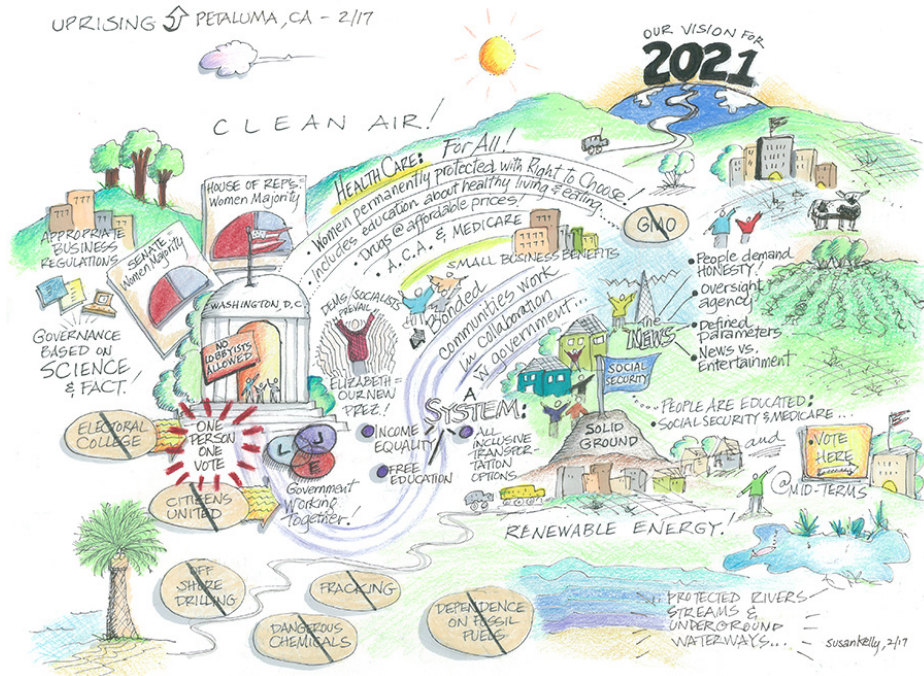
# 2021 CALENDAR

---



A COLLECTION OF ARTISTIC RESPONSES  
FROM OUR GLOBAL COMMUNITY

# JANUARY



Susan Kelly  
Sonoma, CA, USA

"This was a recording I did for a group of women activists in Petaluma ...in 2017. It was the group's vision for 2021 and includes many elements that make up our democracy."

| S  | M  | T  | W  | T  | F  | S  |
|----|----|----|----|----|----|----|
|    |    |    |    |    | 1  | 2  |
| 3  | 4  | 5  | 6  | 7  | 8  | 9  |
| 10 | 11 | 12 | 13 | 14 | 15 | 16 |
| 17 | 18 | 19 | 20 | 21 | 22 | 23 |
| 24 | 25 | 26 | 27 | 28 | 29 | 30 |
| 31 |    |    |    |    |    |    |

THE GROVE CONSULTANTS INTERNATIONAL

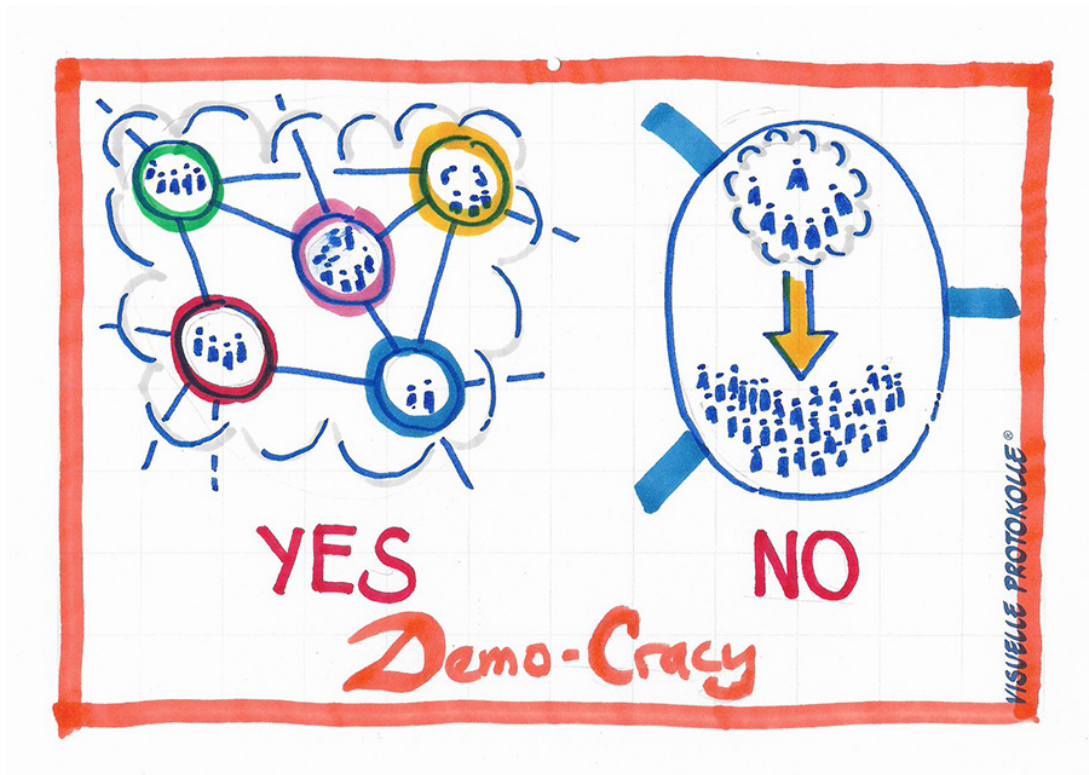


© 2021 The Grove

[www.thegrove.com](http://www.thegrove.com)

+1.415.561.2500

# FEBRUARY



Reinhard Kuchenmüller  
Gavorrano, Italy

| S  | M  | T  | W  | T  | F  | S  |
|----|----|----|----|----|----|----|
|    | 1  | 2  | 3  | 4  | 5  | 6  |
| 7  | 8  | 9  | 10 | 11 | 12 | 13 |
| 14 | 15 | 16 | 17 | 18 | 19 | 20 |
| 21 | 22 | 23 | 24 | 25 | 26 | 27 |
| 28 |    |    |    |    |    |    |

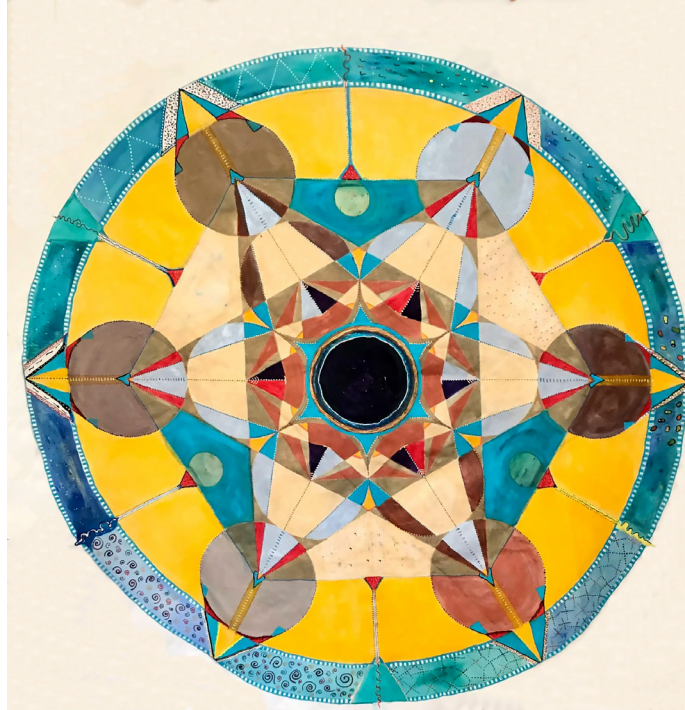
THE GROVE CONSULTANTS INTERNATIONAL 

© 2021 The Grove

[www.thegrove.com](http://www.thegrove.com)

+1.415.561.2500

# MARCH



Kayla Kirsch  
Berkeley, CA, USA

*A Place at the Table*

"To me, it symbolizes a large table in which everyone can fit, uniquely and with both commonalities and differences. This is a critical aspect of democracy."

| S  | M  | T  | W  | T  | F  | S  |
|----|----|----|----|----|----|----|
|    | 1  | 2  | 3  | 4  | 5  | 6  |
| 7  | 8  | 9  | 10 | 11 | 12 | 13 |
| 14 | 15 | 16 | 17 | 18 | 19 | 20 |
| 21 | 22 | 23 | 24 | 25 | 26 | 27 |
| 28 | 29 | 30 | 31 |    |    |    |

THE GROVE CONSULTANTS INTERNATIONAL



© 2021 The Grove

[www.thegrove.com](http://www.thegrove.com)

+1.415.561.2500



# APRIL



Anne Merkelson  
Portland, OR, USA

| S  | M  | T  | W  | T  | F  | S  |
|----|----|----|----|----|----|----|
|    |    |    |    | 1  | 2  | 3  |
| 4  | 5  | 6  | 7  | 8  | 9  | 10 |
| 11 | 12 | 13 | 14 | 15 | 16 | 17 |
| 18 | 19 | 20 | 21 | 22 | 23 | 24 |
| 25 | 26 | 27 | 28 | 29 | 30 |    |

THE GROVE CONSULTANTS INTERNATIONAL 

© 2021 The Grove    [www.thegrove.com](http://www.thegrove.com)    +1.415.561.2500

# MAY



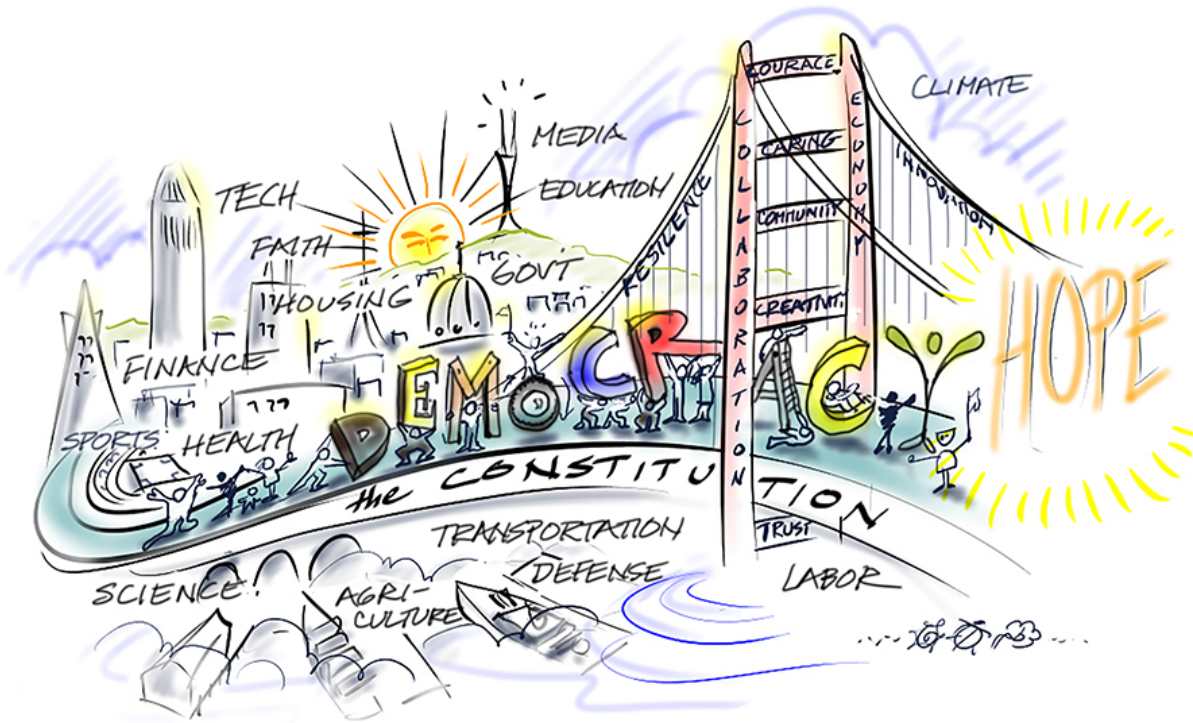
Carol Vollmer  
Durham, NC, USA  
(81 years young)

| S  | M  | T  | W  | T  | F  | S  |
|----|----|----|----|----|----|----|
|    |    |    |    |    |    | 1  |
| 2  | 3  | 4  | 5  | 6  | 7  | 8  |
| 9  | 10 | 11 | 12 | 13 | 14 | 15 |
| 16 | 17 | 18 | 19 | 20 | 21 | 22 |
| 23 | 24 | 25 | 26 | 27 | 28 | 29 |
| 30 | 31 |    |    |    |    |    |

THE GROVE CONSULTANTS INTERNATIONAL 

© 2021 The Grove    [www.thegrove.com](http://www.thegrove.com)    +1.415.561.2500

# JUNE



David Sibbet  
Petaluma, CA, USA

Bridge of Hope

| S  | M  | T  | W  | T  | F  | S  |
|----|----|----|----|----|----|----|
|    |    | 1  | 2  | 3  | 4  | 5  |
| 6  | 7  | 8  | 9  | 10 | 11 | 12 |
| 13 | 14 | 15 | 16 | 17 | 18 | 19 |
| 20 | 21 | 22 | 23 | 24 | 25 | 26 |
| 27 | 28 | 29 | 30 |    |    |    |

THE GROVE CONSULTANTS INTERNATIONAL 

© 2021 The Grove    [www.thegrove.com](http://www.thegrove.com)    +1.415.561.2500

# JULY



Tiffany Forner  
Mill Valley, CA, USA

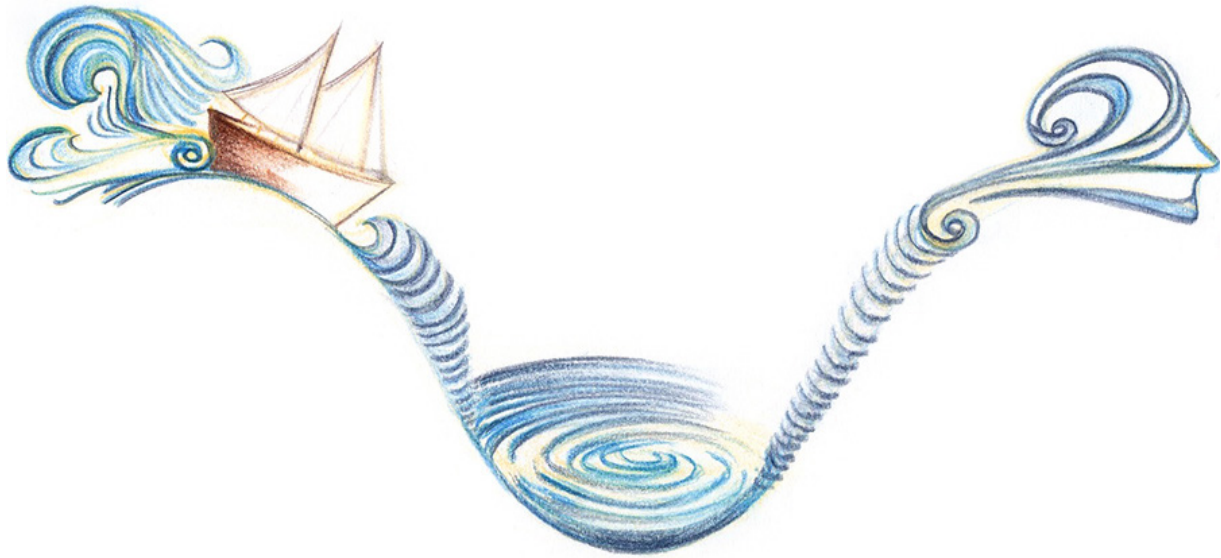
| S  | M  | T  | W  | T  | F  | S  |
|----|----|----|----|----|----|----|
|    |    |    |    | 1  | 2  | 3  |
| 4  | 5  | 6  | 7  | 8  | 9  | 10 |
| 11 | 12 | 13 | 14 | 15 | 16 | 17 |
| 18 | 19 | 20 | 21 | 22 | 23 | 24 |
| 25 | 26 | 27 | 28 | 29 | 30 | 31 |

THE GROVE CONSULTANTS INTERNATIONAL 

© 2021 The Grove    [www.thegrove.com](http://www.thegrove.com)    +1.415.561.2500



# AUGUST



Vittoria Piattelli  
Munich, Germany

"Deep democracy embraces stillness while venturing into the unknown  
to be in service of the whole."

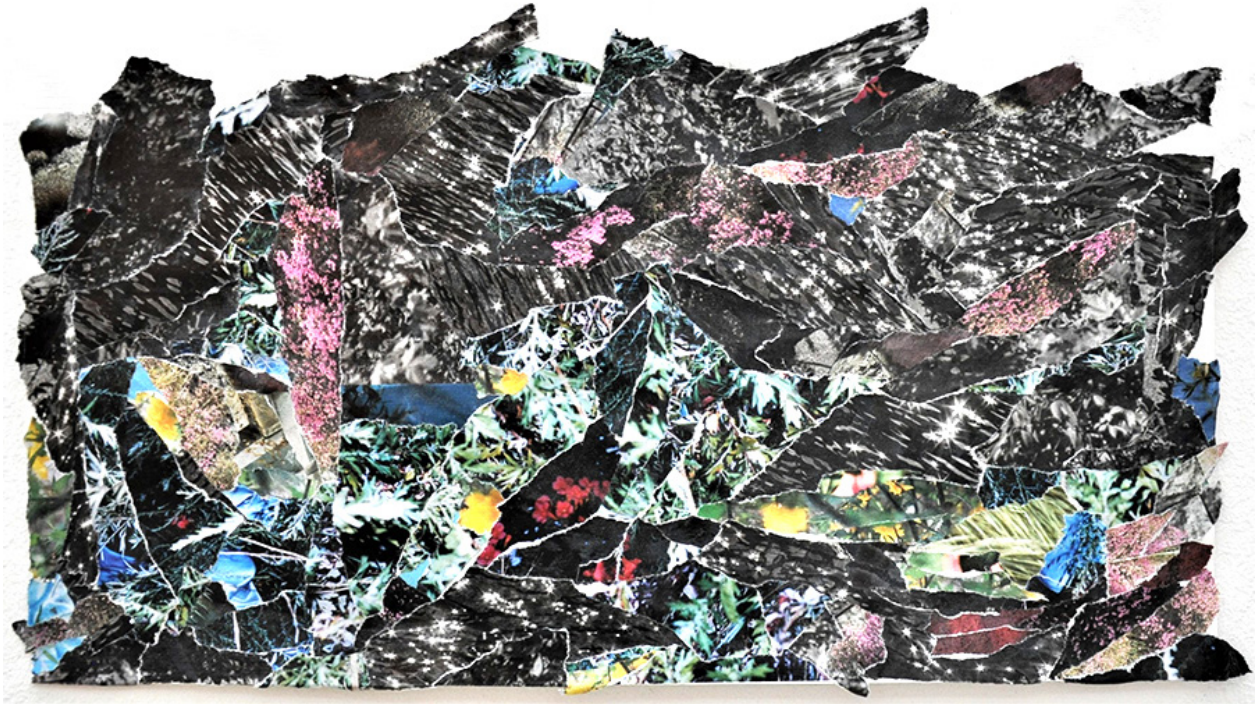
---

| <b>S</b>  | <b>M</b>  | <b>T</b>  | <b>W</b>  | <b>T</b>  | <b>F</b>  | <b>S</b>  |
|-----------|-----------|-----------|-----------|-----------|-----------|-----------|
| <i>1</i>  | <i>2</i>  | <i>3</i>  | <i>4</i>  | <i>5</i>  | <i>6</i>  | <i>7</i>  |
| <i>8</i>  | <i>9</i>  | <i>10</i> | <i>11</i> | <i>12</i> | <i>13</i> | <i>14</i> |
| <i>15</i> | <i>16</i> | <i>17</i> | <i>18</i> | <i>19</i> | <i>20</i> | <i>21</i> |
| <i>22</i> | <i>23</i> | <i>24</i> | <i>25</i> | <i>26</i> | <i>27</i> | <i>28</i> |
| <i>29</i> | <i>30</i> | <i>31</i> |           |           |           |           |

THE GROVE CONSULTANTS INTERNATIONAL 

© 2021 The Grove    [www.thegrove.com](http://www.thegrove.com)    +1.415.561.2500

# SEPTEMBER



Ruth Picker  
Vienna, Austria

*Mountains in Commotion*

"I completed [this collage] a few weeks ago under the weighty impression of all the pressures and challenges that democracy is under these days—things are in motion, and we don't know whether it is for the better or the worse."

---

| S  | M  | T  | W  | T  | F  | S  |
|----|----|----|----|----|----|----|
|    |    |    | 1  | 2  | 3  | 4  |
| 5  | 6  | 7  | 8  | 9  | 10 | 11 |
| 12 | 13 | 14 | 15 | 16 | 17 | 18 |
| 19 | 20 | 21 | 22 | 23 | 24 | 25 |
| 26 | 27 | 28 | 29 | 30 |    |    |

THE GROVE CONSULTANTS INTERNATIONAL



© 2021 The Grove

[www.thegrove.com](http://www.thegrove.com)

+1.415.561.2500

# OCTOBER



Todd Pound  
Mill Valley, CA, USA

| S  | M  | T  | W  | T  | F  | S  |
|----|----|----|----|----|----|----|
|    |    |    |    |    | 1  | 2  |
| 3  | 4  | 5  | 6  | 7  | 8  | 9  |
| 10 | 11 | 12 | 13 | 14 | 15 | 16 |
| 17 | 18 | 19 | 20 | 21 | 22 | 23 |
| 24 | 25 | 26 | 27 | 28 | 29 | 30 |
| 31 |    |    |    |    |    |    |

THE GROVE CONSULTANTS INTERNATIONAL 

© 2021 The Grove    [www.thegrove.com](http://www.thegrove.com)    +1.415.561.2500

# NOVEMBER



Gisela Wendling  
Petaluma, CA, USA

Women and Men in Sacred Circle

| <b>S</b>  | <b>M</b>  | <b>T</b>  | <b>W</b>  | <b>T</b>  | <b>F</b>  | <b>S</b>  |
|-----------|-----------|-----------|-----------|-----------|-----------|-----------|
|           | <i>1</i>  | <i>2</i>  | <i>3</i>  | <i>4</i>  | <i>5</i>  | <i>6</i>  |
| <i>7</i>  | <i>8</i>  | <i>9</i>  | <i>10</i> | <i>11</i> | <i>12</i> | <i>13</i> |
| <i>14</i> | <i>15</i> | <i>16</i> | <i>17</i> | <i>18</i> | <i>19</i> | <i>20</i> |
| <i>21</i> | <i>22</i> | <i>23</i> | <i>24</i> | <i>25</i> | <i>26</i> | <i>27</i> |
| <i>28</i> | <i>29</i> | <i>30</i> |           |           |           |           |

THE GROVE CONSULTANTS INTERNATIONAL 

© 2021 The Grove    [www.thegrove.com](http://www.thegrove.com)    +1.415.561.2500



# DECEMBER



Laurie Durnell  
Mill Valley, CA, USA

## *Listening for Democracy*

"A healthy democracy depends on listening among all the players. Leaders listening to constituents, voters listening to each other, and constituents listening carefully for transparency and truth from their leadership."

| S  | M  | T  | W  | T  | F  | S  |
|----|----|----|----|----|----|----|
|    |    |    | 1  | 2  | 3  | 4  |
| 5  | 6  | 7  | 8  | 9  | 10 | 11 |
| 12 | 13 | 14 | 15 | 16 | 17 | 18 |
| 19 | 20 | 21 | 22 | 23 | 24 | 25 |
| 26 | 27 | 28 | 29 | 30 | 31 |    |

THE GROVE CONSULTANTS INTERNATIONAL 

© 2021 The Grove    [www.thegrove.com](http://www.thegrove.com)    +1.415.561.2500



# THE STORY OF THE 2021 CALENDAR

In November of 2020, The Grove put out a call in our community to submit artwork that answered the question, “What does democracy mean to you?” We knew this may be a complex question to answer, and we were hoping for a variety of responses. What we received was a wonderful array of interpretations from around the globe. We’d like to thank our contributors for helping us ring in the new year with creativity, community, and a thoughtful appreciation of democracy.



© 2021 The Grove Consultants International

[www.thegrove.com](http://www.thegrove.com)

+1.415.561.2500

This free, printable calendar is for personal use only.