

Sun Signs

A Quick and Easy Guide

By Tricia Duffy Foggo
Bermuda Fog Astrology

We all have a Sun Sign, a Moon Sign and a Rising Sign, which make up the three pillars of our personality.

Did you know that you also have every sign of the zodiac present in your natal chart? This guide will help you to understand the characteristics of each Sun Sign, so you can recognize the different attributes in yourself and others.



The symbols for each Sun Sign



Aries



Taurus



Pisces



Aquarius



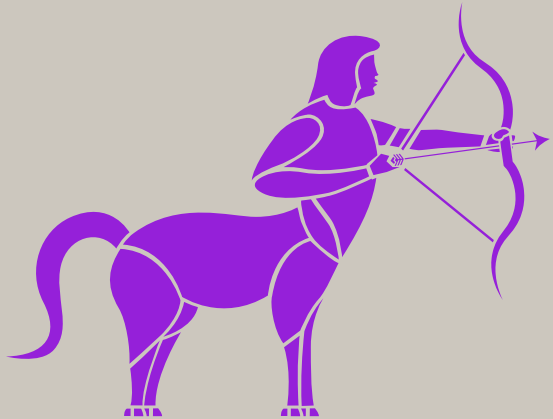
Gemini



Capricorn



Cancer



Sagittarius



Leo



Scorpio



Libra



Virgo

Aries

MARCH 21–APRIL 19



ELEMENT: FIRE

MODE: CARDINAL

RULER: MARS

KEYWORDS: I AM

BODY PART RULED BY ARIES: HEAD

CHARACTERISTICS:

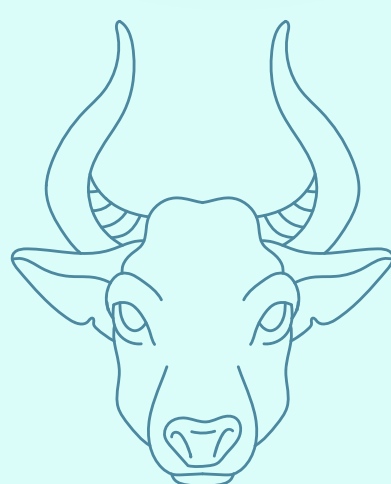
ENERGETIC, ENTHUSIASTIC, STRONG LEADER, BOLD,
BRAVE, INDEPENDENT, BLUNT, BOSSY, COURAGEOUS,
HONEST, DIRECT, GENEROUS, AMBITIOUS, DECISIVE,
STRAIGHTFORWARD, WILL CONFRONT THINGS HEAD ON,
WILL NOT BACK DOWN

SHADOW: PUSHY, FORCEFUL, AGGRESSIVE, ARROGANT

Aries Personalities: Maya Angelou, Bette Davis,
Diana Ross, Andrew Lloyd Webber, Matthew
Broderick, Chaka Khan, Pharrell, Chance the
Rapper, Peyton Manning

Taurus

APRIL 20–MAY 20



ELEMENT: EARTH

MODE: FIXED

RULER: VENUS

KEYWORDS: I HAVE

BODY PART RULED BY TAURUS: NECK AND THROAT

CHARACTERISTICS:

STABLE, STEADY, STRONG, GROUNDED, GENEROUS,
RESOURCEFUL, DEPENDABLE, CONSISTENT, STUBBORN,
SLOW, LIKES PRODUCTIVITY AND PLEASURE, LIKES ORDER
AND ROUTINE, PAYS BILLS ON TIME, ENJOYS EVERYTHING
THROUGH 5 SENSES

SHADOW: POSSESSIVE, CONTROLLING, OVERLY FIXATED
ON STABILITY, STUBBORN, INFLEXIBLE, BELLIGERENT

Taurus Personalities: William Shakespeare,
Queen Elizabeth, Dwayne Johnson, George
Clooney, Adele, Billy Joel, Barbra Streisand, Meek
Mill, Tony Romo

Gemini

MAY 21–JUNE 20



ELEMENT: AIR

MODE: MUTABLE

RULER: MERCURY

KEYWORDS: I THINK

BODY PART RULED BY GEMINI: SHOULDERS, ARMS,
HANDS AND LUNGS

CHARACTERISTICS:

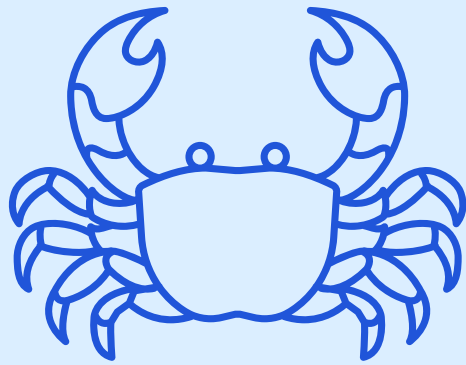
CURIOUS, SOCIAL, TALKATIVE, LIVELY, RESPONSIVE,
ADAPTABLE, FLEXIBLE, GREAT MEMORY, NEEDS TO SEE ALL
SIDES OF AN ISSUE, LOVES KIDS, GETS BORED EASILY,
DUAL NATURE, FULL OF CONTRADICTIONS

SHADOW: INCONSISTENT, DISTRACTED, GOSSIPY, GLIB

Gemini Personalities: Marilyn Monroe, Venus
Williams, Kanye West, Prince, Paul McCartney, Patti
LaBelle, Angelina Jolie, Stevie Nicks, Jim Thorpe

Cancer

JUNE 21-JULY 22



ELEMENT: WATER

MODE: CARDINAL

RULER: MOON

KEYWORDS: I FEEL

BODY PART RULED BY CANCER: BREASTS AND STOMACH

CHARACTERISTICS:

EMOTIONAL, NURTURING, SENSITIVE, SYMPATHETIC,
CARING, LOVES CONNECTION AND COMFORT, HARD-
WORKING, LOYAL, TENACIOUS, HOLDS ONTO MEMORIES,
AVOIDS CONFRONTATION

SHADOW: MOODY, MELANCHOLY, DEFENSIVE, IRRITABLE

Cancer Personalities: Princess Diana, Elon Musk,
Tom Hanks, Robin Williams, Nikola Tesla, Malala,
Kathy Bates, Missy Elliott, Ringo Starr

Leo

JULY 23–AUGUST 22



ELEMENT: FIRE

MODE: FIXED

RULER: SUN

KEYWORDS: I WILL

BODY PART RULED BY LEO: BACK, SPINE AND HEART

CHARACTERISTICS:

FUN, PLAYFUL, ENTERTAINING, LAVISH, DRAMATIC,
CHARISMATIC, EXUBERANT, SELF-ASSURED, WITTY,
VIVACIOUS, GENEROUS, EXTRAVAGANT, DOGMATIC

SHADOW: DOMINEERING, SELF-OBSESSED, EGO-
MANIACAL, BITTER, ENTITLED, SELF-RIGHTEOUS

Leo Personalities: Barack Obama, Megan
Markle, Viola Davis, Chris Hemsworth, Halle Berry,
Steve Martin, Madonna, Anthony Anderson, Angela
Bassett

Virgo

AUGUST 23– SEPTEMBER 22



ELEMENT: EARTH

MODE: MUTABLE

RULER: MERCURY

KEYWORDS: I ANALYZE

BODY PART RULED BY VIRGO: NERVOUS SYSTEM, INTESTINES

CHARACTERISTICS:

CONSCIENTIOUS, ANALYTICAL, GROUNDED, PRACTICAL,
INDUSTRIOUS, PERFECTIONIST, SERIOUS, LOVES TO BE OF
SERVICE, INTELLIGENT, ORGANIZED, EFFICIENT, AMBITIOUS,
PURPOSEFUL

SHADOW: HYPER-CRITICAL, MICRO-MANAGING

Virgo Personalities: Mother Teresa, Michael
Jackson, Stephen King, Warren Buffett, Jesse
Owens, Ronaldo, Van Morrison, Cameron Diaz,
Beyoncé

Libra

SEPTEMBER 23–OCTOBER 22



ELEMENT: AIR

MODE: CARDINAL

RULER: VENUS

KEYWORDS: I BALANCE

BODY PART RULED BY LIBRA: LOWER BACK, BUTTOCKS,
KIDNEYS

CHARACTERISTICS:

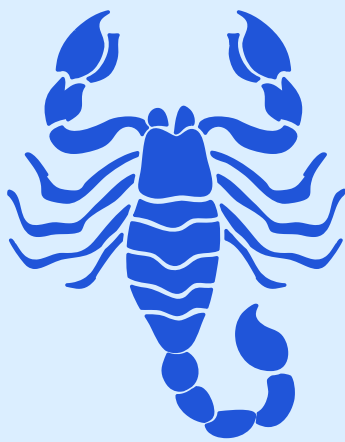
ARTIST, PEACEMAKER, ACTIVIST, PROBLEM–SOLVER, FAIR,
MEASURED, EASYGOING, POLISHED, SOCIALLY INCLINED,
CHARMING, DIPLOMATIC, LIKES HARMONY AND
PARTNERSHIP

SHADOW: INDECISIVE, VAIN, PEOPLE–PLEASING

Libra Personalities: Catherine Zeta-Jones and
Michael Douglas, Will Smith, Serena Williams, Ezra
Miller, Julie Andrews, Kelly Ripa, Gwen Stefani,
Bruno Mars

Scorpio

OCTOBER 23–NOVEMBER 21



ELEMENT: WATER

MODE: FIXED

RULER: PLUTO

KEYWORDS: I DESIRE

BODY PART RULED BY SCORPIO: GENITALS

CHARACTERISTICS:

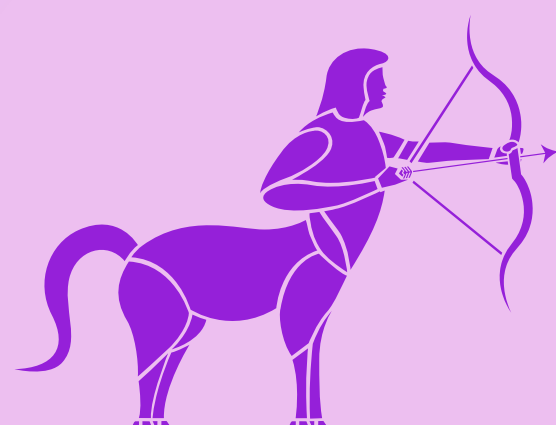
INTENSE, IMAGINATIVE, IDEALISTIC, PASSIONATE,
EMOTIONAL, SUBTLE, MYSTERIOUS, PENETRATING,
POWERFUL, OBSTINATE, FOCUSED, STRATEGIC, PERSISTENT

SHADOW: CONTROLLING, JEALOUS, STINGING TEMPER

Scorpio Personalities: Pablo Picasso, Matthew
McConaughey, Hilary Clinton, Bill Gates, Shailene
Woodley, Drake, Julia Roberts, Whoopi Goldberg, Alfre
Woodard

Sagittarius

NOVEMBER 22– DECEMBER 23



ELEMENT: FIRE

MODE: MUTABLE

RULER: JUPITER

KEYWORDS: I SEEK

BODY PART RULED BY SAGITTARIUS: HIPS, THIGHS, LIVER

CHARACTERISTICS:

CHEERFUL, OPTIMISTIC, EXPLORER, SEEKER, PHILOSOPHER ,
ENERGETIC, BOLD, EBULLIENT, RESTLESS, INDEPENDENT,
CONFIDENT, EXUBERANT, PROGRESSIVE

SHADOW: BLUNT, RASH, INSENSITIVE

Sagittarius Personalities: Tina Turner, Bill Nye,
Chrissy Teigen, Bette Midler, Zoe Kravitz, Jay-Z,
Nicki Manaj, Jamie Foxx, Steven Spielberg

Capricorn

DECEMBER 22– JANUARY 19



ELEMENT: EARTH

MODE: CARDINAL

RULER: SATURN

KEYWORDS: I USE

BODY PART RULED BY CAPRICORN: KNEES, BONES

CHARACTERISTICS:

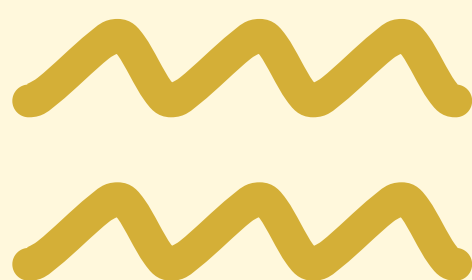
PRACTICAL, PRUDENT, ORGANIZED, HARD WORKER, HIGH
ACHIEVER, PROVIDER, DISCIPLINED, RESERVED,
DETERMINED, PATIENT, LOYAL, SELF-CONTAINED, QUICK
TO SEIZE OPPORTUNITY

SHADOW: RIGID, HARSH, CRITICAL, SKEPTICAL

Capricorn Personalities: Michelle Obama, Jared
Leto, Diane Sawyer, Denzel Washington, Dolly
Parton, James Earl Jones, Sade, Orlando Bloom, LL
Cool J

Aquarius

JANUARY 20– FEBRUARY 18



ELEMENT: AIR

MODE: FIXED

RULER: URANUS

KEYWORDS: I KNOW

BODY PART RULED BY AQUARIUS: CALVES, ANKLES

CHARACTERISTICS:

FRIENDLY, BRILLIANT, INDEPENDENT, ASSERTIVE,
PROGRESSIVE, VISIONARY, STUBBORN, DETACHED,
INTELLIGENT, FREE SPIRIT, CONTRARY, HUMANITARIAN,
ECCENTRIC

SHADOW: ALOOF, STUCK IN LOGIC, INDIFFERENT

Aquarius Personalities: Kerry Washington, John
Travolta, Guy Fieri, Harry Styles, Neil Diamond,
Alicia Keys, Chris Rock, Michael Jordan, Ed
Sheeran

Pisces

FEBRUARY 19–MARCH 20



ELEMENT: WATER

MODE: MUTABLE

RULER: NEPTUNE

KEYWORDS: I DREAM

BODY PART RULED BY PISCES: FEET

CHARACTERISTICS:

EMOTIONAL, INTUITIVE, RECEPTIVE, IMAGINATIVE, DREAMER,
COMPASSIONATE, ROMANTIC, ADAPTABLE, EMPATHETIC,
KIND, REFLECTIVE, ARTIST, HEALER

SHADOW: DISTRACTED, CONFUSED, MARTYR

Pisces Personalities: Sidney Poitier, Drew Barrymore, Erykah Badu, Harry Belafonte, Justin Bieber, Rihanna, Bryan Cranston, Liza Minnelli, Queen Latifah