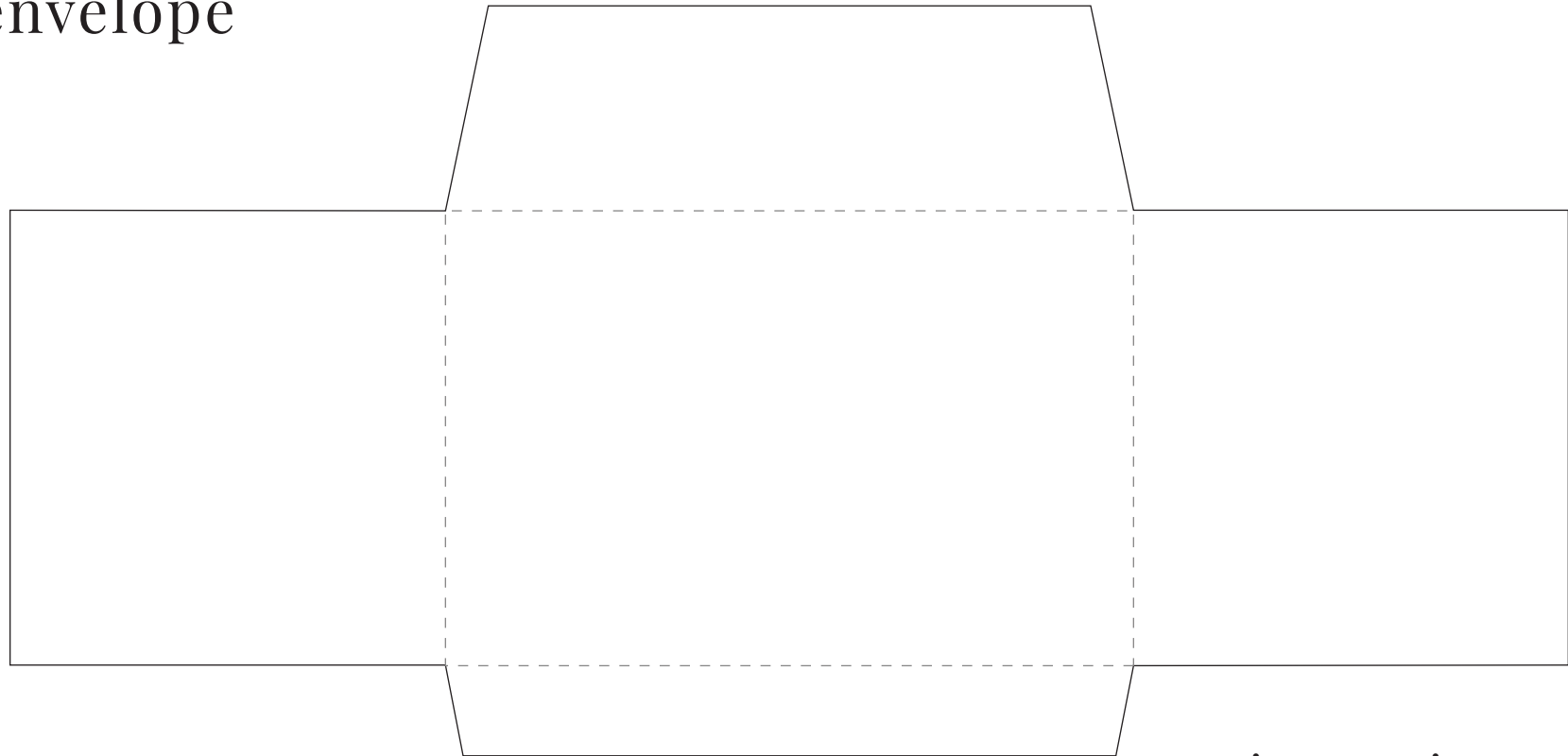


gift certificate & envelope



instructions:

- print template
- cut out gift certificate
- cut out envelope
- trace envelope pattern onto paper (cardstock or wrapping paper)
- cut out
- fold on dotted lines
- secure seams with glue or tape
- insert gift card
- seal top or tie with string

gift certificate & envelope



trace pattern onto paper



cut out



fold in sides and glue



fold up bottom and glue



insert gift certificate



tie with a bow