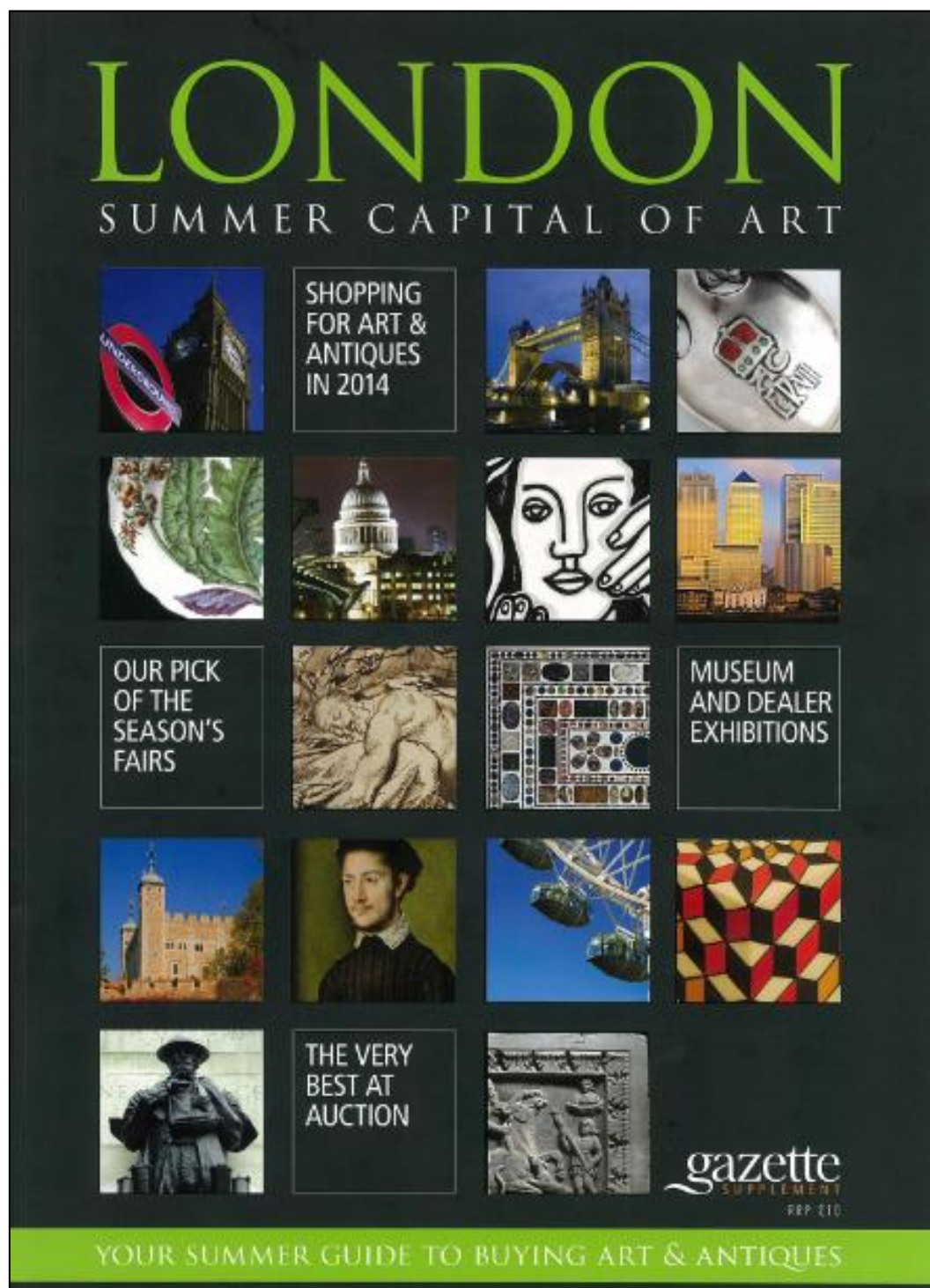


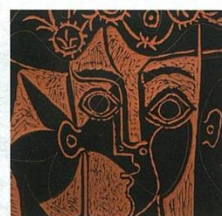
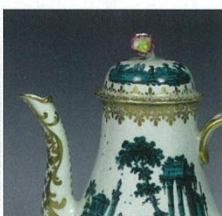


## Antiques Trade Gazette – London Summer Capital of Art

Summer 2014

Circulation: 18,000





## CONTENTS

**WE WILL REMEMBER THEM** Page 8-13  
Dealers choose their favourite pieces of WWI art

**SHOPPING AT...** Page 15-27  
A round-up of what to expect at Olympia, Art Antiques London and Masterpiece

**WHEN OPPORTUNITY KNOX** Page 28-31  
Archibald Knox: the critical and commercial rise of an unsung powerhouse of the Arts & Crafts movement

**CERAMICS** Page 34-36  
A medley of auctions, fairs and dealer exhibitions

**FURNITURE & WORKS OF ART** Page 38-39  
Picks from dealers' stock and forthcoming auctions

**BOOKS & MAPS** Page 40  
The events that make up London's Book Week

**SILVER & JEWELLERY** Page 42-43  
Highlights from exhibitions and auctions

**FINE ART** Page 46-51  
Old and Modern Masters in the sales and galleries

**KENSINGTON CHURCH STREET** Page 52-53  
Shopping on London's finest antiques thoroughfare

**REMEMBERING ART'S FOLK HEROES** Page 54-57  
Folk art comes to Tate Britain

**CALENDAR OF EVENTS** Page 59-67  
Fairs, selling exhibitions, auctions and special events in June and July



[www.antiquetradegazette.com](http://www.antiquetradegazette.com)

[www.the-saleroom.com](http://www.the-saleroom.com)



## SHOPPING AT MASTERPIECE



**Above:** *Seated Figure*, 1934, by Henry Moore, bronze, £150,000 from **Bowman Sculpture**.

**Right:** *Two Turning Forms* by Barbara Hepworth, 1972, 19½in (49cm) high, white marble, priced between £750,000-850,000 from **Alan Wheatley Fine Art**.



**Above:** *Coiffeuse, Model MA1092*, 1927, designed by Pierre Chareau, in walnut amboyna, sycamore and wrought iron, in excess of £500,000 from **Geoffrey Diner Gallery**.



**Right:** *Miss Bentham (Early Standing Nude)*, 1906 by George Bellows (1882-1925), oil on canvas, 5ft 11in x 2ft 11in (1.8m x 89cm), priced in the range of \$7m-8m from **Collisart Ltd**.



**Left:** Roman marble panel of Mithras Tauroctonus, 2nd-3rd century AD, £280,000 from **Rupert Wace Ancient Art**.

### MASTERPIECE LONDON 2014

**When:** June 26 to July 2 (preview June 25)  
**Location:** Bespoke marquee at The Royal Hospital Chelsea, London SW3.

**Nearest underground:** A short walk from Sloane Square (District and Circle Lines). A shuttle car service will also run (see website).

**Exhibitors:** Over 150

**Organisers:** Nazi Vassegh (chief executive), Thomas Woodham-Smith (creative director) and Nicola Winwood (fair director).

**Admission:** Standard admission £25, preview ticket £100.

**Contact:** +44 (0)20 7499 7470  
**contact@masterpiecefair.com**  
**www.masterpiecefair.com**



**Above:** *A View of Covent Garden from the Artist's Studio* by Samuel Scott (c.1702-72), late 1750s, 22½in x 3ft 2in (57 x 96cm) oil on canvas, £65,000 from **Philip Mould**.



## SHOPPING AT MASTERPIECE



**Above:** Harry Beck's diagrammatic map of the London Underground, first trialled in 1932, is regarded as a classic of modern design which remains in use to this day. London dealer **Daniel Crouch Rare Books** will be taking this early version, a first state of the map issued in January 1933, to Masterpiece. It shows the interchange stations marked with a diamond and the Piccadilly line still under construction between Enfield West and Cockfosters. It is priced at £2500.



**Right:** this framed enamel portrait of the composer George Frederic Handel painted by Christian Friedrich Zincke will be shown by portrait miniatures specialist **Elle Shushan** from Philadelphia at Masterpiece. The portrait, which measures 3½in (8.5cm) high including the frame, and is signed and dated 1718, has been in an American collection for 50 years. It will have a price in the region of £25,000-30,000.



**Left and right:** a highlight on the stand of the London/Leeds based dealers **Tomasso Brothers Fine Art** will be this marble bust of Count Nikolai Demidov, the industrialist and philanthropist who was one of the richest men in Russia in the late 18th and early 19th centuries. The bust, which stands just under 2ft (60cm) high, is by the Italian sculptor Adamo Tadolini who Demidov is thought to have met when he was staying at the Palazzo Ruspoli in Rome in 1823. It is priced in the region of £150,000.



ROBERT  
YOUNG  
ANTIQUES

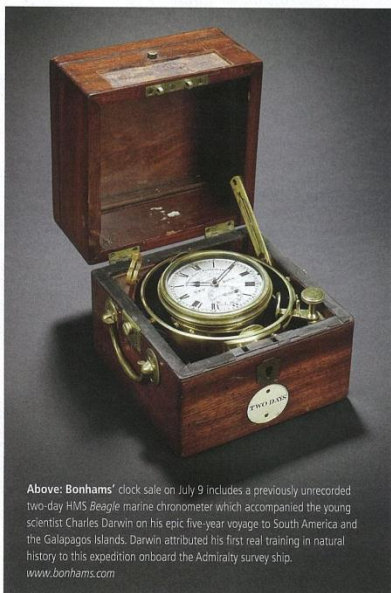
Exhibiting British Folk Art at  
Masterpiece London 2014

[www.robertyoungantiques.com](http://www.robertyoungantiques.com)





## CALENDAR OF EVENTS



Above: Bonhams' clock sale on July 9 includes a previously unrecorded two-day HMS Beagle marine chronometer which accompanied the young scientist Charles Darwin on his epic five-year voyage to South America and the Galapagos Islands. Darwin attributed his first real training in natural history to this expedition onboard the Admiralty survey ship.  
[www.bonhams.com](http://www.bonhams.com)

### June 18-July 11

**Fine 18th century Furniture & Works of Art** – see page 34  
Alongside this show, Mackinnon Gallery open their doors at 5 Ryder Street, SW1 to two other galleries this summer; Galerie Vandermeersch of Paris for their selling exhibition *Royal and Imperial Sèvres Porcelain and Important Renaissance Maiolica* (June 18-July 2) and Madrid gallery, Jose de la Mano for their exhibition *From Alonso Cano to Sorolla – Spanish Old Master Drawings* (July 4 -11).  
[www.mackinnonfineart.com](http://www.mackinnonfineart.com)

### June 18-July 25

**The Art of Pastel** – see page 51  
Stephen Ongpin Fine Art and art consultant Sophie Camu curate an exhibition dedicated to the medium of pastel, spanning the 18th-20th centuries, 6 Mason's Yard, St James's, SW1.  
[www.stephenongpin.com](http://www.stephenongpin.com)

### June 19

**Victorian, Pre-Raphaelite & British Impressionist Art**  
Christie's, 85 Old Brompton Road, South Kensington, SW7  
Includes Ferdenick Morgan's oil on canvas *First Steps* consigned by Alder Hey Children's Hospital in Liverpool (estimate £30,000-50,000).  
[www.christies.com](http://www.christies.com)

### June 20

**Pop Culture**  
Christie's, 85 Old Brompton Road, South Kensington, SW7  
[www.christies.com](http://www.christies.com)

### June 23

**Impressionist & Modern Art**  
Bonhams, 101 New Bond Street, W1  
Includes Pierre-Auguste Renoir's 1909 oil on canvas *Les Oliviers de Cagnes* (estimate £250,000-350,000).  
[www.bonhams.com](http://www.bonhams.com)

### June 23

**Fine & Rare Musical Instruments**  
Bromptons, 21 Albemarle Street, W1  
[www.bromptons.co](http://www.bromptons.co)

### June 23-24

**Impressionist & Modern Art** – see page 47  
Sotheby's, 34-35 New Bond Street, W1  
A leading lot is *Composition with Red, Blue and Grey* painted by Piet Mondrian in 1927 (estimate £14m-18m).  
[www.sothebys.com](http://www.sothebys.com)

### June 24

**Passion for Fashion**  
Kerry Taylor Auctions, 249-253 Long Lane, Bermondsey, SE1  
[www.kerrytaylorauctions.com](http://www.kerrytaylorauctions.com)

### June 24-25

**Impressionist & Modern Art** – see page 51  
Christie's, 8 King Street, SW1  
Includes Camille Pissarro's *Bords de la Seine à Bougival* (estimate £250,000-350,000).  
[www.christies.com](http://www.christies.com)

### June 24-25

**Quarterly Fine Art Auction** – see pages 39 and 62  
Rosebery's 74-76 Knights Hill, West Norwood, SE27  
[www.roseberys.co.uk](http://www.roseberys.co.uk)

### June 24-28

**Hallmark Salon 2014**  
Somerset House, Strand, WC2  
A selling showcase for the talents of 86 contemporary British jewellers and silversmiths with every piece hallmarked in the United Kingdom.  
[www.hallmarksalon.com](http://www.hallmarksalon.com)

### June 25

**Impressionist & Modern Works on Paper**  
Christie's, 8 King Street, SW1  
[www.christies.com](http://www.christies.com)

### June 25

**European, Victorian & British Impressionist Art** – see page 50  
Bonhams, 101 New Bond Street, W1  
[www.bonhams.com](http://www.bonhams.com)

### June 25

**Entertainment Memorabilia**  
Bonhams, Montpelier Street, Knightsbridge, SW7  
[www.bonhams.com](http://www.bonhams.com)

### June 25

**Antique Arms, Armour & Militaria** – see page 66  
Thomas Del Mar in association with Sotheby's, 25 Blythe Road, W14  
[www.thomasdelmar.com](http://www.thomasdelmar.com)

### June 25-26

**Modern British & Irish Art** – see page 50  
Christie's, 8 King Street, SW1  
[www.christies.com](http://www.christies.com)

### June 26

**Picasso Ceramics** – see page 35  
Christie's, 85 Old Brompton Road, South Kensington, SW7  
[www.christies.com](http://www.christies.com)

### June 26-July 2

**Masterpiece London** – see pages 24 and 26  
Fifth outing for the fair with over 150 dealers in art, antiques and luxury goods in the grounds of The Royal Hospital Chelsea, SW3.  
[www.masterpiecefair.com](http://www.masterpiecefair.com)

### June 26-July 2

**Masterpiece London** – see pages 24 and 26

Fifth outing for the fair with over 150 dealers in art, antiques and luxury goods in the grounds of The Royal Hospital Chelsea, SW3.

[www.masterpiecefair.com](http://www.masterpiecefair.com)