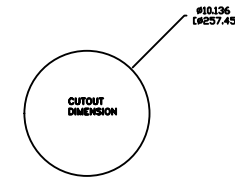
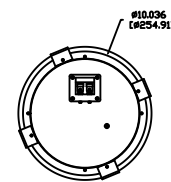
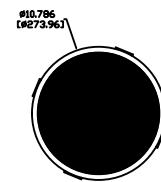
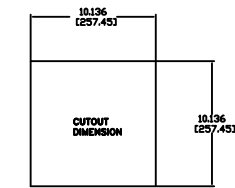
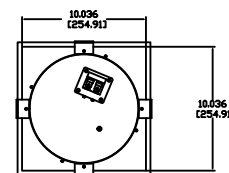
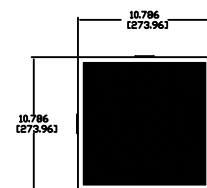


REVISIONS				
ECD	REV.	DESCRIPTION	DATE	APPROVED
	A	RELEASE FOR PRODUCTION	01-26-16	



FXCQ820 ROUND ASSEMBLY



FXCQ820 SQUARE ASSEMBLY

NOTES:

- 1: TOP ASSEMBLY FOR ROUND TRIM AND GRILLE
- 2: BOTTOM ASSEMBLY FOR SQUARE TRIM AND GRILLE

JAMES LOUDSPEAKER

FXCQ820

EXTERNAL DIMENSIONS

P/N: - DWR #: 150820-K201

REVISED BY: K. EBELING

DRAWN BY: K. DUNLEA FILE:

DATE: 03-13-12 SCALE:

APPROVED:

DRAFTING APPROVED:

DO NOT SCALE DRAWING

DRAWING NOT TO BE USED FOR CNC

TOLERANCES: ANG: ± = .5° FRACT. ± = 1/32

DECIMALS: .XX ± = .01 .XXX ± = .005

REVISION: A SHEET 1 OF 1